

ENGINEERS





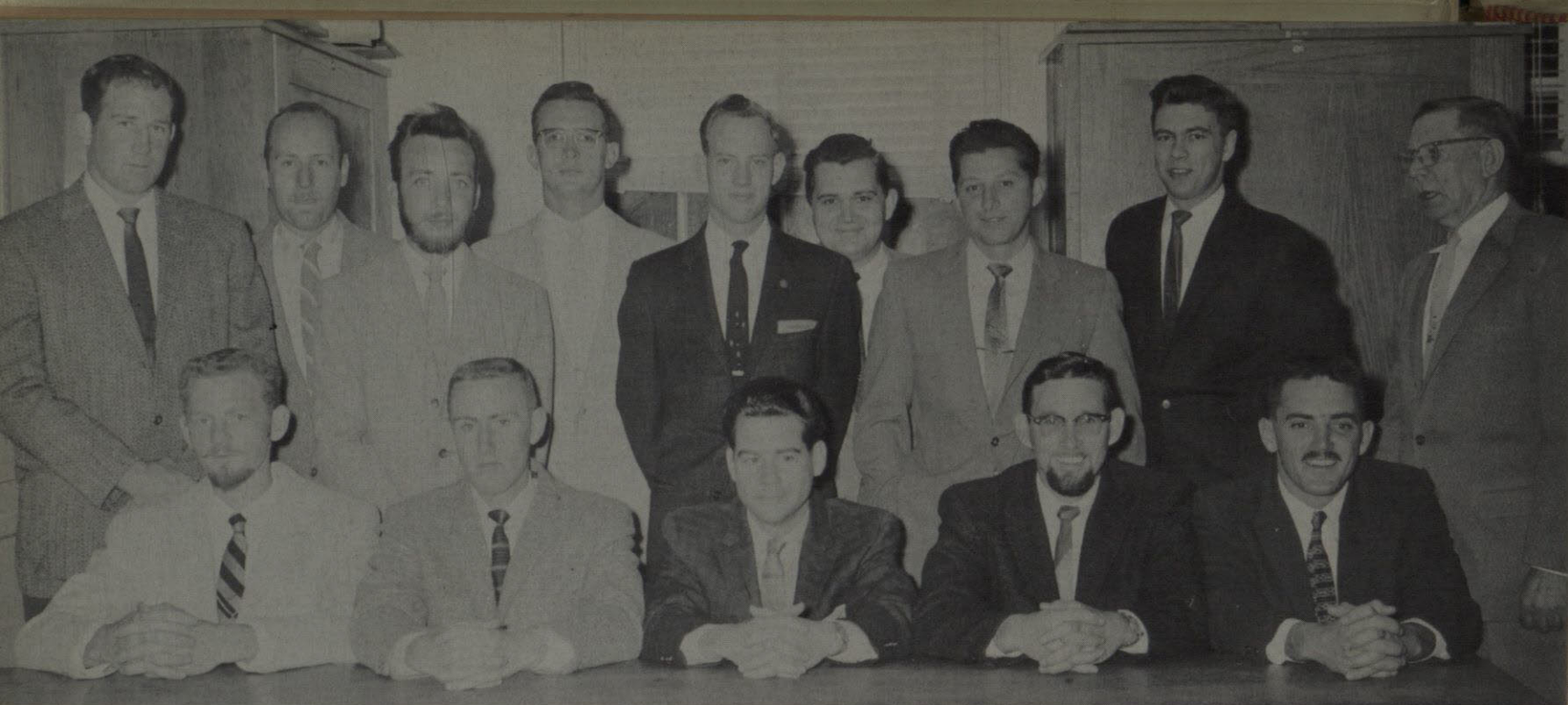
GLENDALDRIDGE
Engineering Queen
Zeta Tau Alpha

BETTIE ANN DAVIS
Engineering Duchess



DOROTHY PIERCE
Engineering Duchess





Row 1: James L. Carter, Jack W. Burgess, Edward F. Gee, Bob Garner, Caesar Fulton.

Row 2: Dan Boyd, William Stanton, Edward Sandell, Richard Montalbo, Ken English, Dr. L. A. Nelson—Advisor.

Row 3: Carl D. Lundquist, William Riggs, H. I. Snider.

SIGMA GAMMA EPSILON

OFFICERS:

Caesar Fulton, President
 Bob Garner, Vice-President
 Edward Gee, Secretary-Treasurer
 James Carter, Corresponding Secretary
 Jack Burgess & Dan Boyd, Publicity Chairmen

The Alpha Lambda Chapter of Sigma Gamma Epsilon, national professional fraternity for students of the earth sciences, was installed at Texas Western in 1940. Qualification for membership requires an above average scholastic record and the presentation of a technical paper. The fraternity works towards a closer interest in the allied fields of geology, mining, metallurgy, and petroleum engineering.





OFFICERS:

Caesar Fulton, President
 Robert Bardsley, Vice-President
 Robert Limon, Secretary
 Guillermo Palau, Treasurer
 Dr. J. C. Rintelen, Sponsor
 Glenda Eldridge, Engineering Queen

AMERICAN INSTITUTE OF MINING and METALLURGICAL ENGINEERING

The Texas Western Chapter of the American Institute of Mining and Metallurgical Engineers was established in 1915 as the American Institute of Mining. It became a part of AIME in 1944. The chapter encourages interest in various sciences and promotes fellowship between professional men and students.

Row 1: Dr. Rintelen, Robert Limon, Robert Bardsley, Glenda Eldridge, Caesar Fulton, Guillermo Palau.

Row 2: Phil Gaston, Dan Boyd, James Hill, Ed Sandell, Norris Coleman, and Jack Burgess.

Row 3: Edward Escalante, Jose de la Fuente, Taesin Chung, and Ronald Martin.





Row 1: Robert James, Richard Ellis, Luis Garcia, Jr., Arturo Alvarez, Ricardo Sotelo, William Gandara.

Row 2: Bill Huff, Ruben Valdez, Roberto Villarreal, Francisco Porras, Raul Peinado, Jesus Lopez, Rodolfo Chong, Xavier Chavez.

Row 3: Wilbur Jarmon, Calvin Benson, Bernard Heiler, Bob Navarro, Bennie Lybrand, Frank Rivas, Adalberto Trujillo, Enrique de la Pena.

AMERICAN SOCIETY OF CIVIL ENGINEERS

OFFICERS:

President	Wilbur Jarmon
Vice-President	Bennie Lybrand
Secretary	Roberto Villarreal
Treasurer	Jesus Lopez
Sponsor	Mr. Paul C. Hassler, Jr.

The Texas Western Chapter of the American Society of Civil Engineers was established in 1948 by a group of twelve men. Eligibility for membership requires a major of Civil Engineering with a standing of sophomore or above. The chapter acquaints students with one another, introduces them to topics of interest in civil engineering, and fosters development of a professional spirit.



OFFICERS:

George Garcia, Secretary; Mr. Floyd Decker, Sponsor; Ernie Holmes, Senior Representative; Dan Williamson, President; Art Napoles, Treasurer; and George Martch, Vice President.

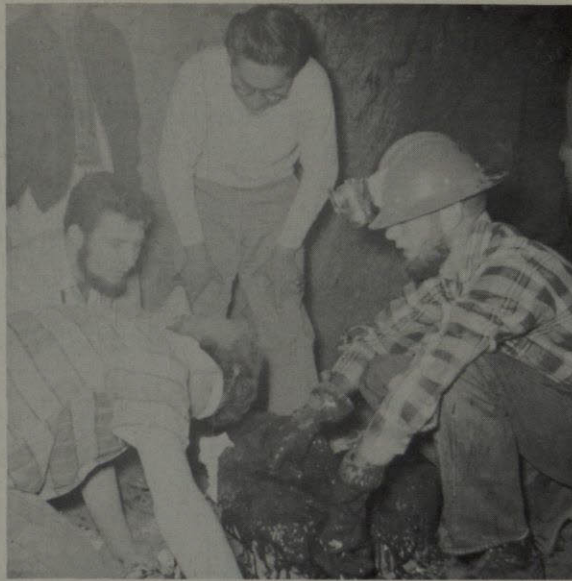
A. I. E. E.

The student chapter of the American Institute of Electrical Engineers, established in 1948 encourages the advancement of electrical engineers in the fields of theory and practice, together with allied arts and sciences, development of individual engineers and participation in inspection trips to places of engineering interest.

Row 1: George Garcia, Dan Williamson, Mr. Floyd A. Decker, Ed Bejarano, and Frank Gonzalez.

Row 2: Ernie Holmes, Pete Ramirez, Ben Flores, Art Napoles, George Emert, Jerry Marshall, Galen Palmore, Raymundo Rios, and Frank Valenzuela.





A poor initiate kisses the Blarney Stone.



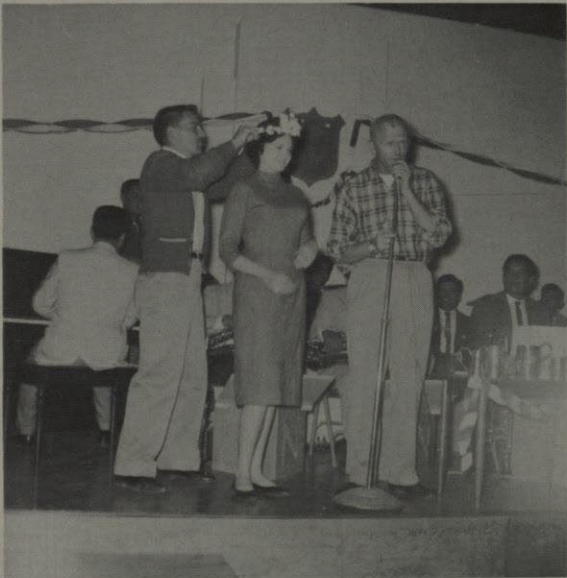
Time for chow.



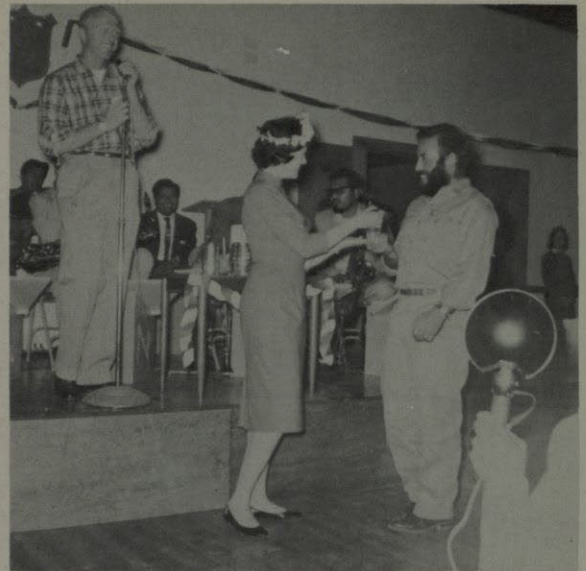
Time to collect chow tickets.

The woes of being initiated.

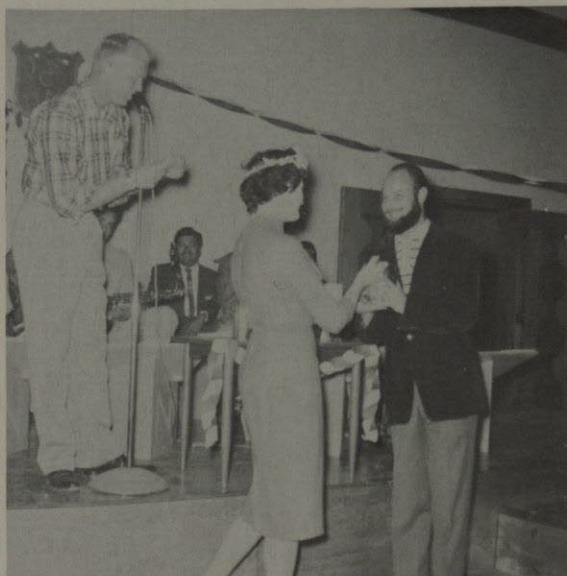




Queen Glenda receives her crown.



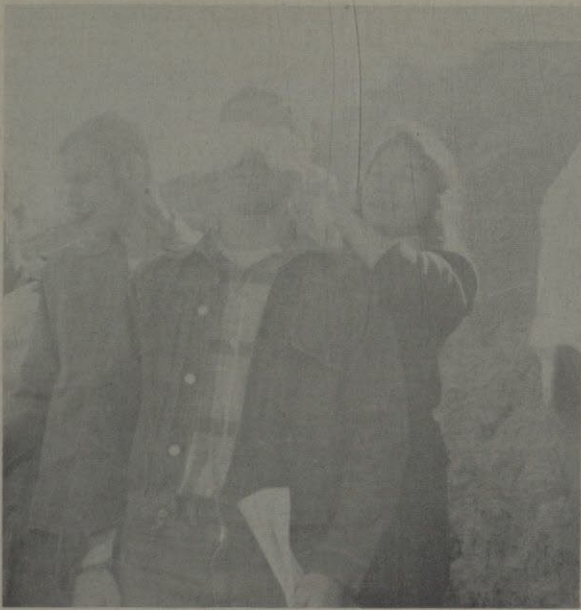
Richard Fuentes wins his trophy for the Best Beard.



Willie Palau receives the award for the Best Groomed Beard.



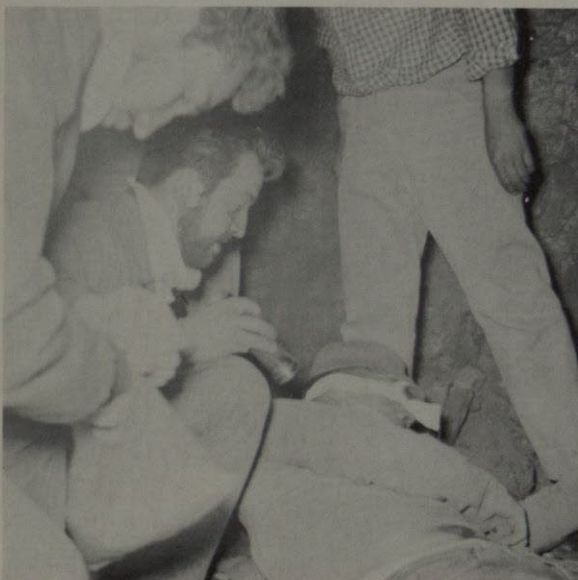
My aren't we proud!



Bettie Davis blindfolds an initiate.



Dorothy Pierce is shown an outside view of the mine.



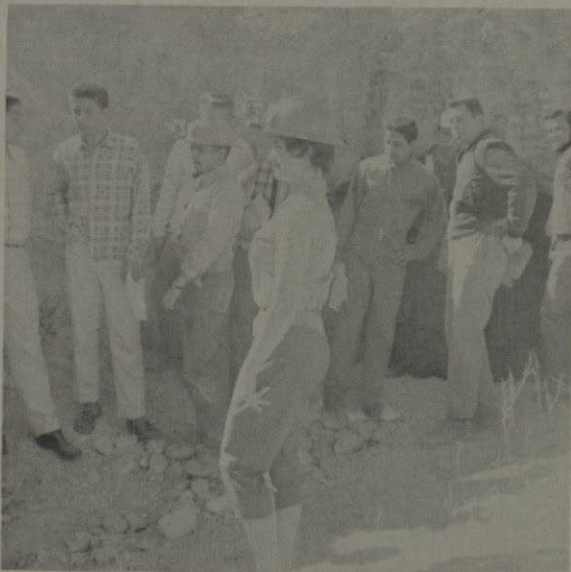
An initiate is doing penance before he sees St. Pat.



The calm before the storm.



What a mass of humanity!



SOMETHING must be funny



Ooh, to be able to see