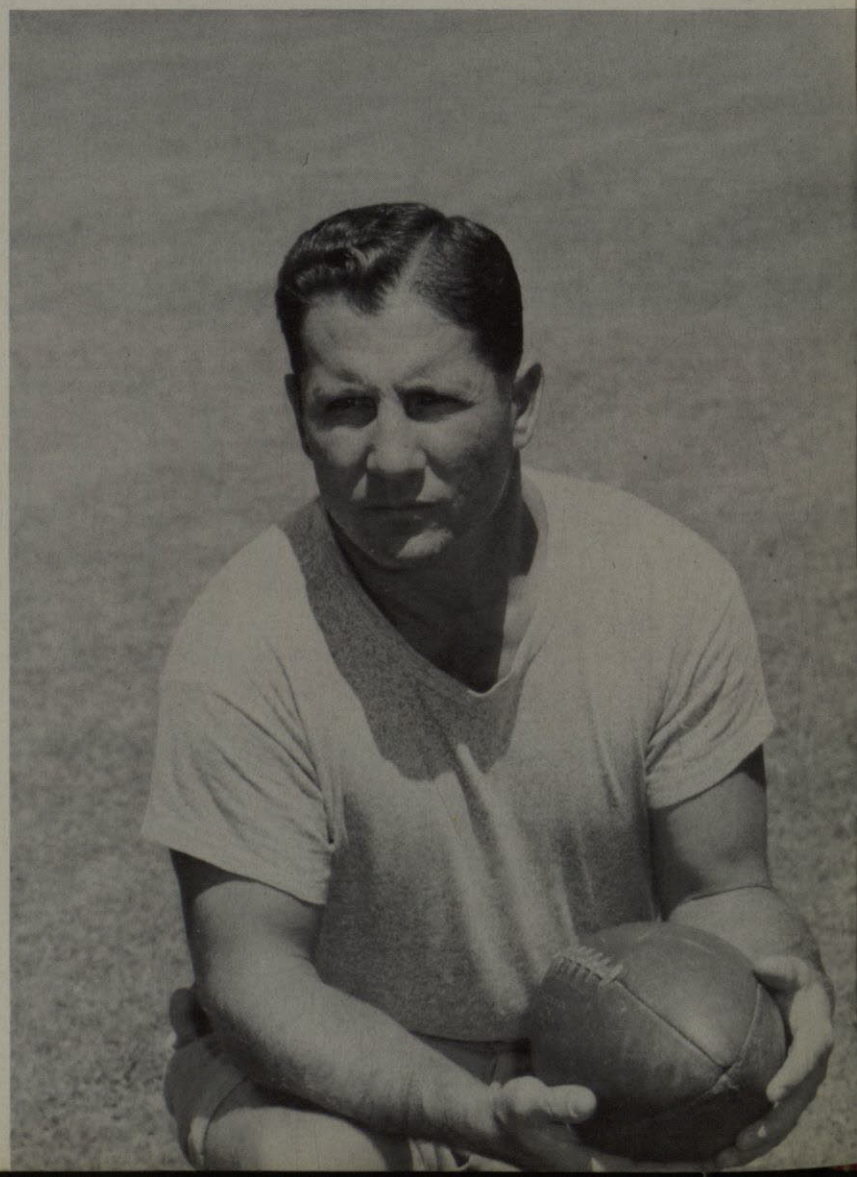


SPORTS

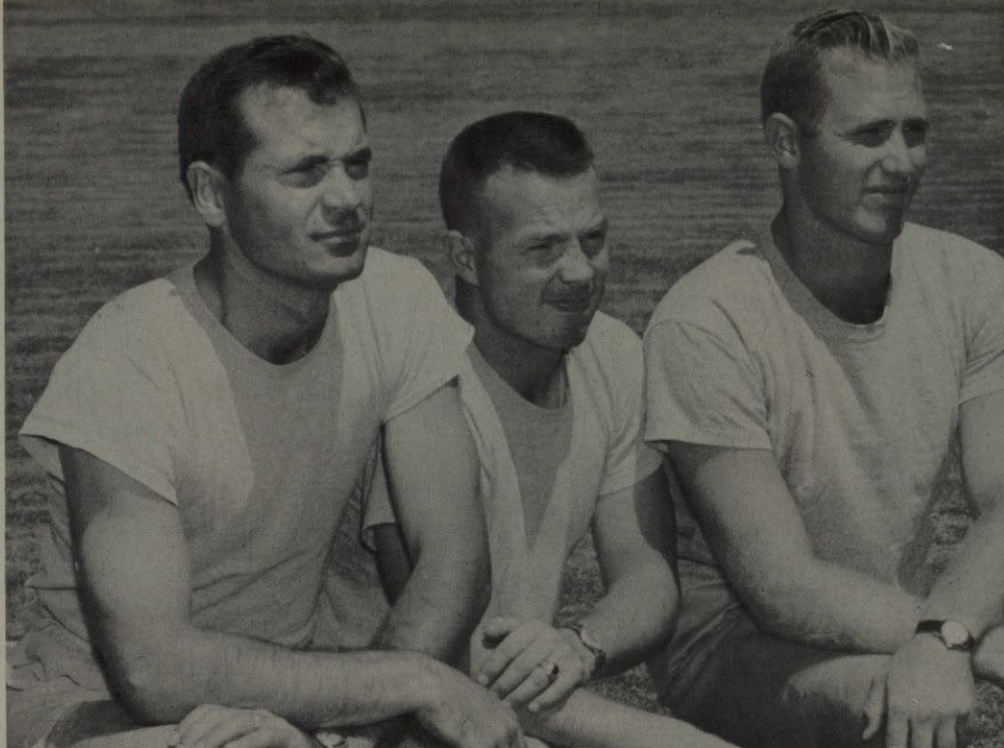




MIKE BRUMBELOW
Athletic Director



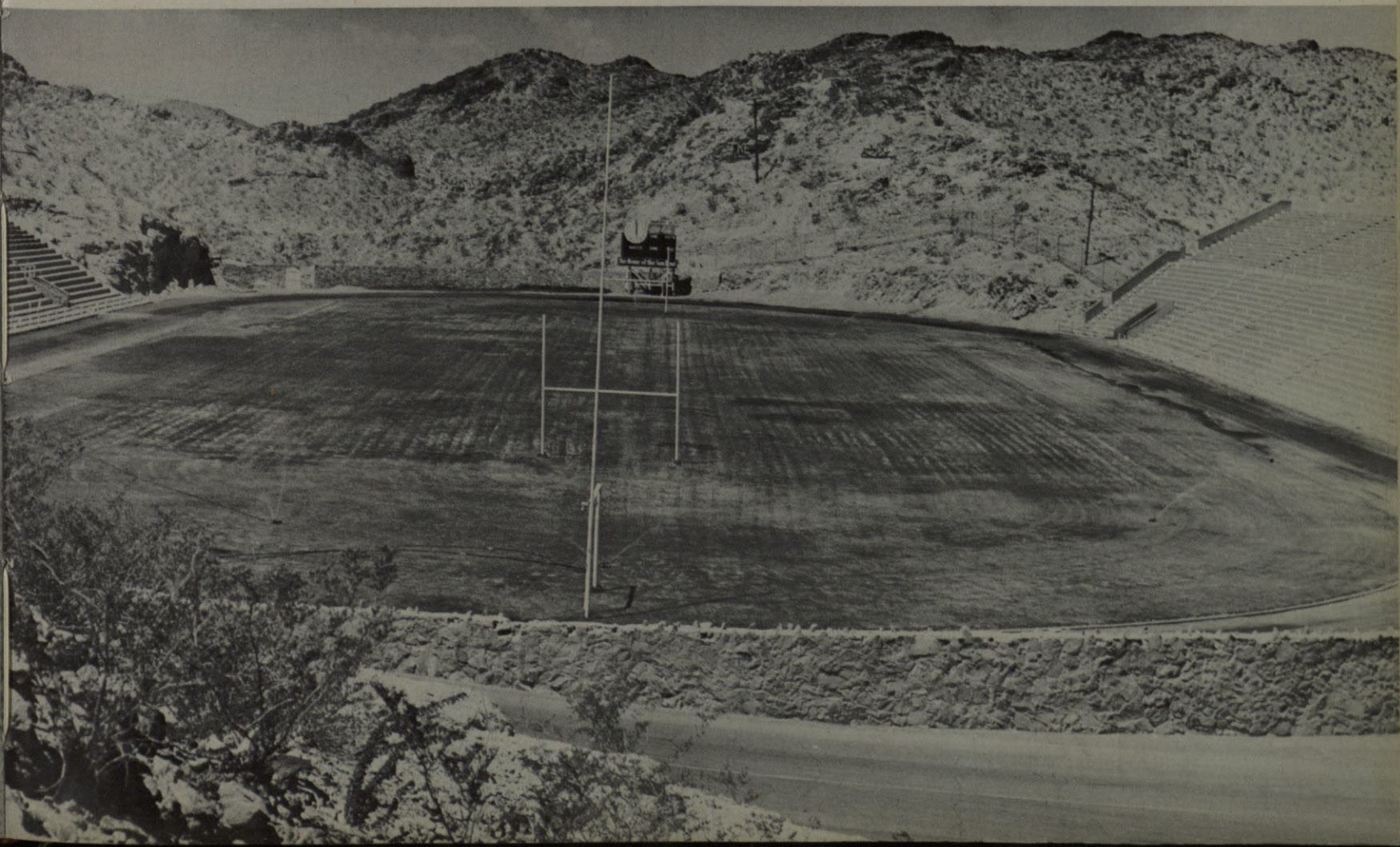
BEN COLLINS
Head Football Coach



(l. to r.) Jimmy Walker, end coach; Billy Bob Plumbley, backfield coach; Kenneth George, line coach.

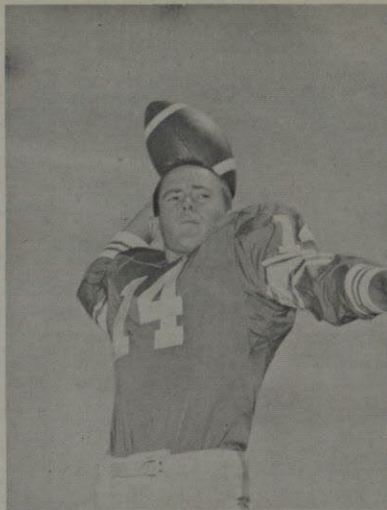
COACHING STAFF

A view of Kidd Field at one of its quieter moments.

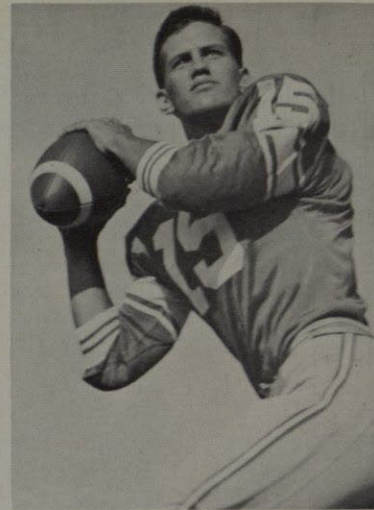




JOHN FURMAN
Quarterback



TILMON KIRBY
Quarterback



GERVIS GALBRAITH
Quarterback



LARRY MEEKS
Halfback

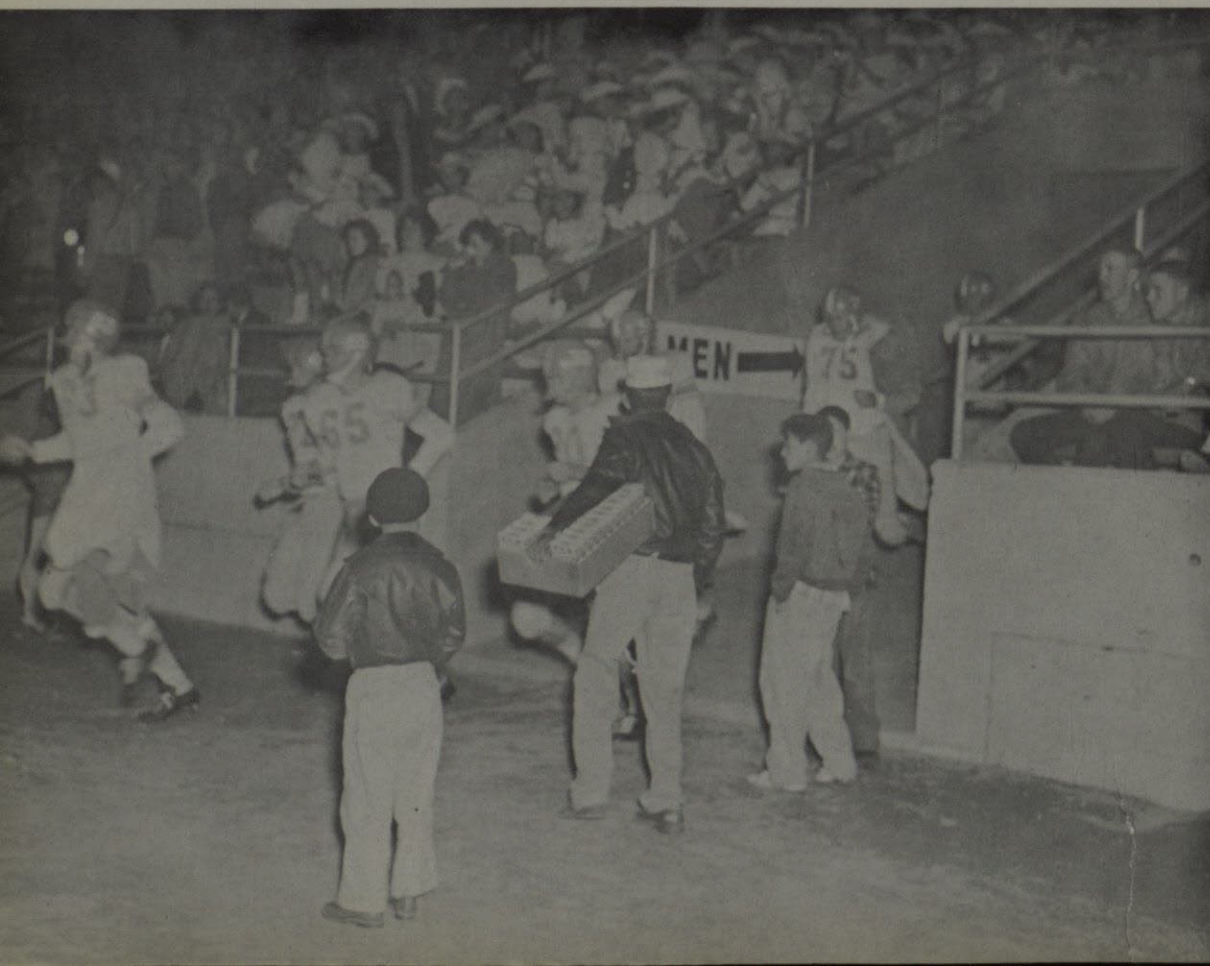


BOB LARABA
Quarterback



JAMES RATLIFF
Halfback

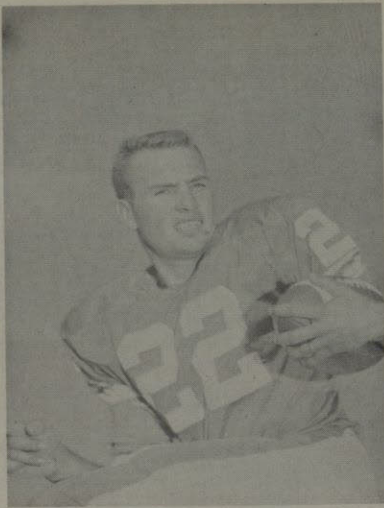
Miners storm out to defend crown.



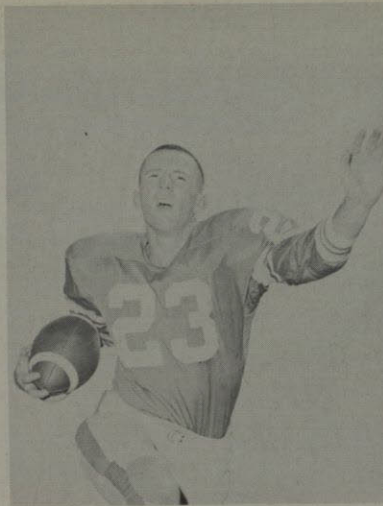
NTS Drops TWC, 26-8

The North Texas State Eagles marred the Miners' opening game and at the same time broke the series deadlock between the two teams.

In the fourth quarter Dick Martin scored the Miner touchdown and Gervis Galbraith ran for the extra two points, leaving the final score 26-8.



JIMMY BEVERS
Halfback



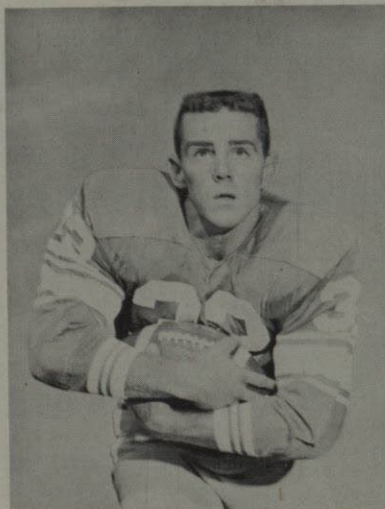
DEL WILLIAMS
Halfback



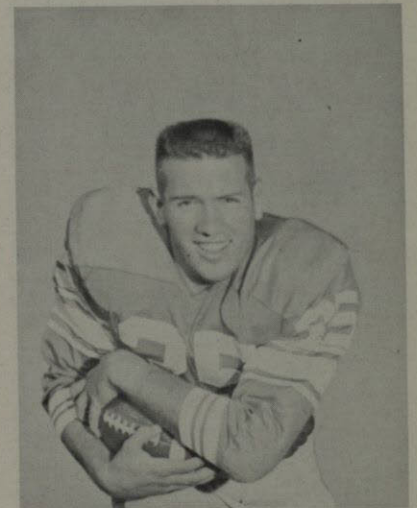
CHARLES BRADSHAW
Fullback



JACKIE MEEKS
Halfback

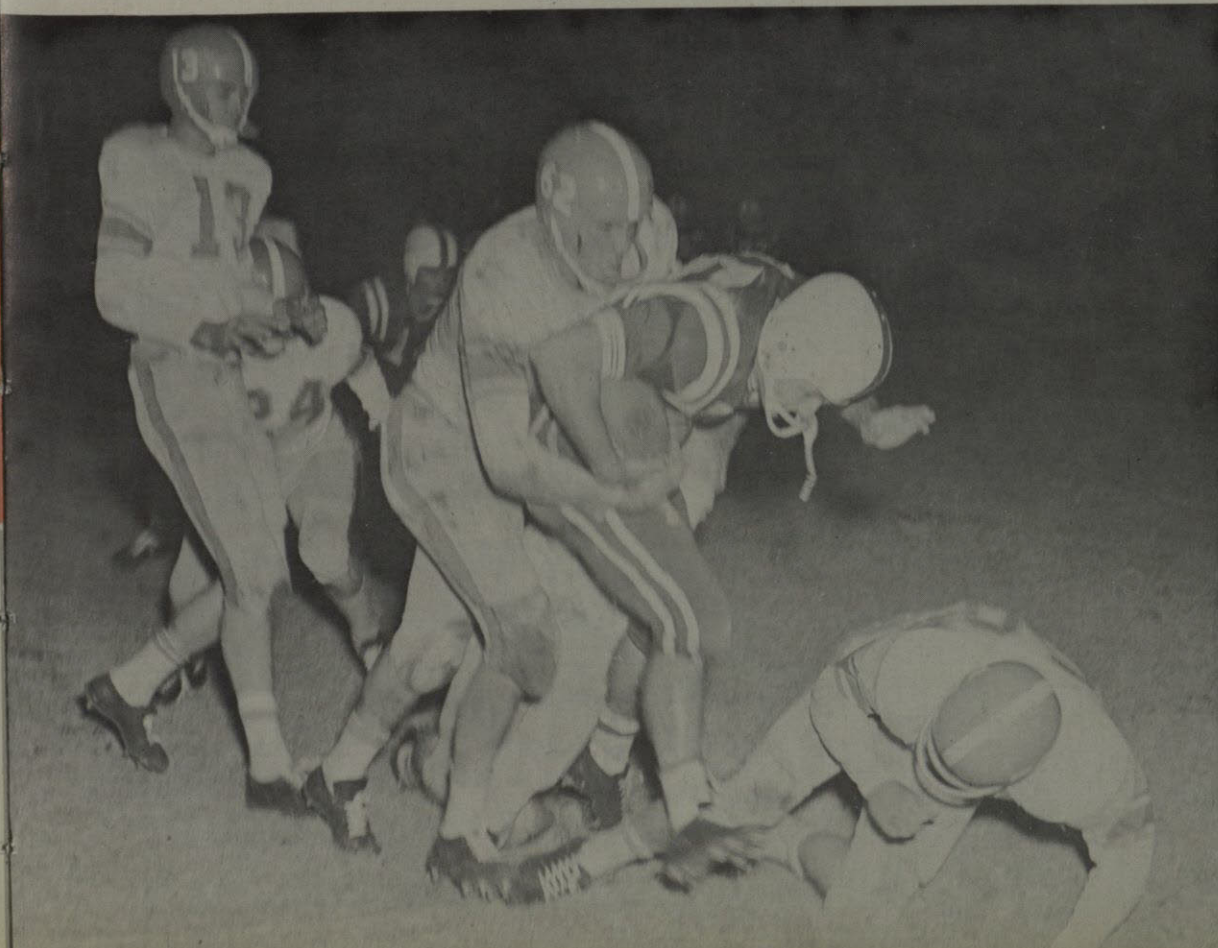


DICK MARTIN
Fullback



STEVE PURSLEY
Halfback

Turn Loose!



Miners Beat Lobos, 15-6

In their second game, the Miners evened out their record at one win and one loss.

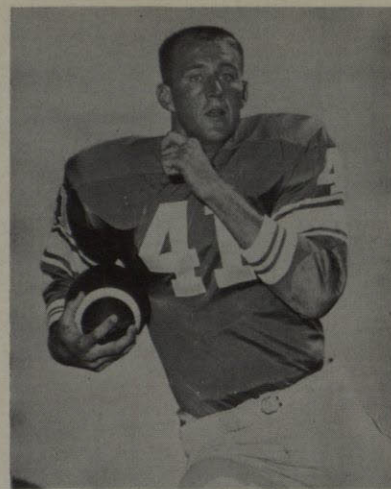
Jackie Meeks and Bob Laraba scored the TWC touchdowns, and Laraba passed to Lee Allen Jones for the two-point conversion.



CHARLES McCALMONT
Fullback



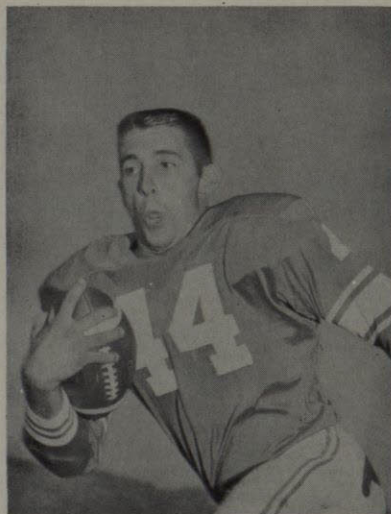
JERRY PRATT
Halfback



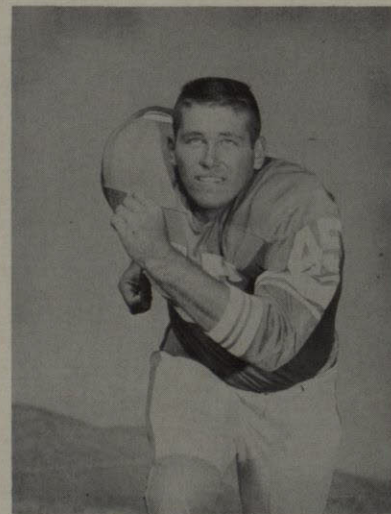
GENE WILLIAMS
Halfback



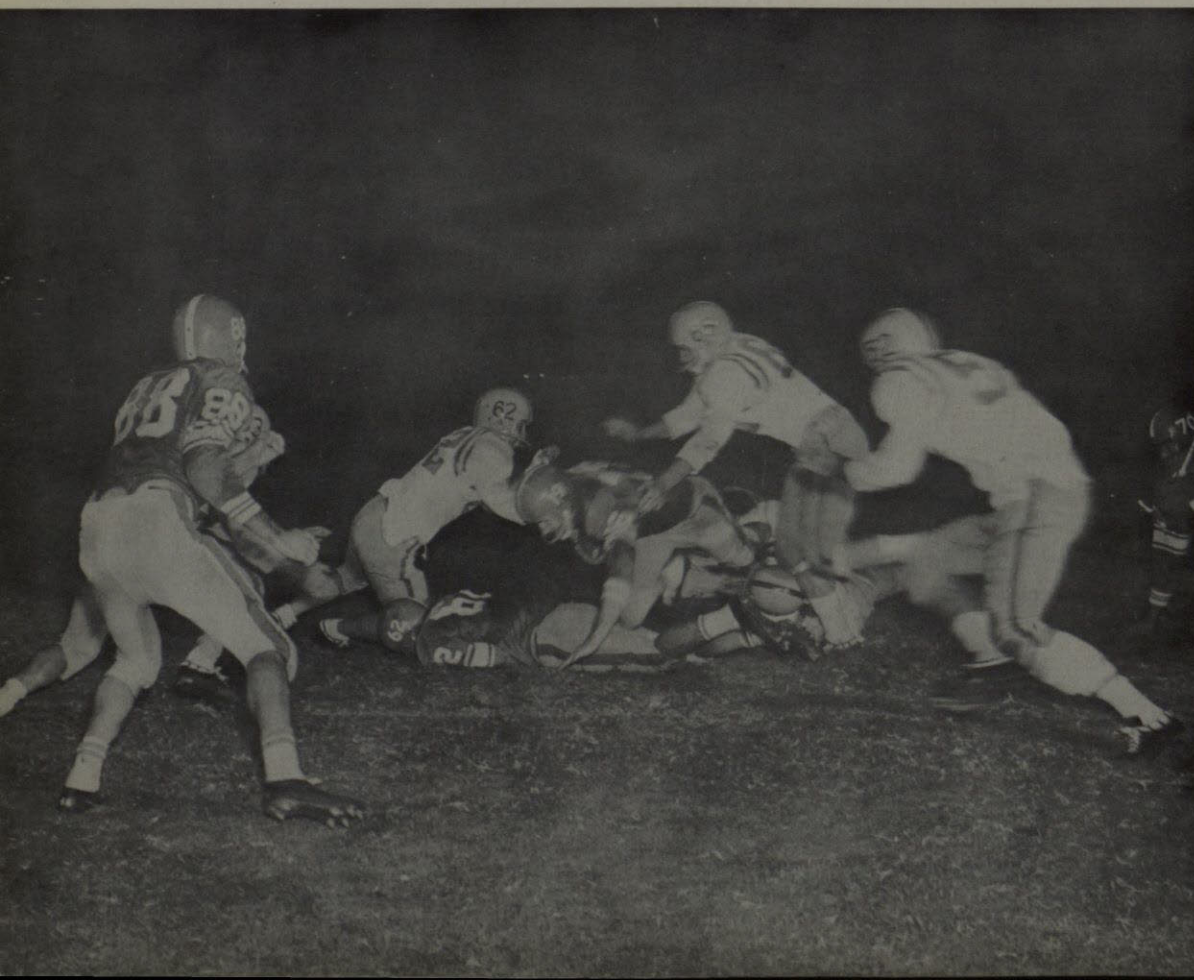
NICK TATE
Halfback



GLENN REED
Fullback



JOE BARNES
Fullback

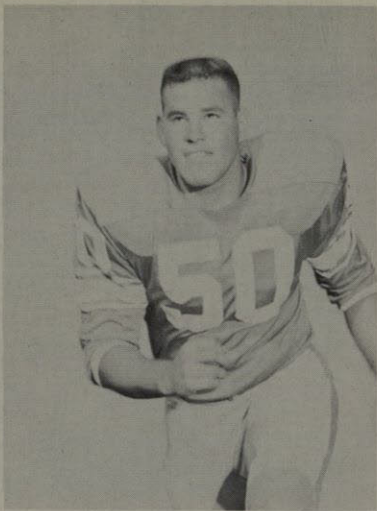


Wildcats Down Miners, 14-6

The Abilene Christian Wildcats defeated the Miners after a scoreless first half.

John Furman passed to Lee Allen Jones for the first score of the game but Abilene Christian came back for two more touchdowns and the victory.

No pushing please!



POOL WEBB
Center
All Conference



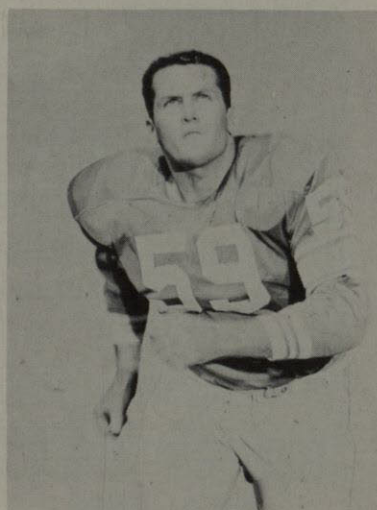
DARRELL CONGER
Center



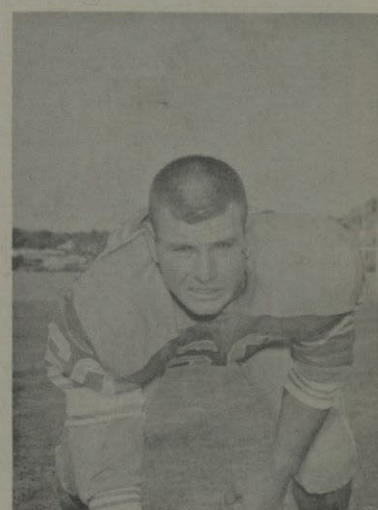
KYLE ELLIS
Center



BILLY RIGGS
Center



JACK MCKAY
Center



JOHN YOUNG
Guard

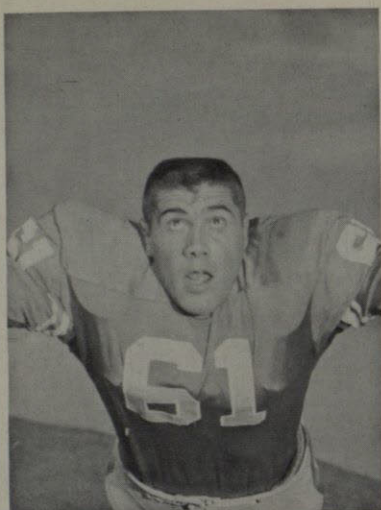
Touchdown!



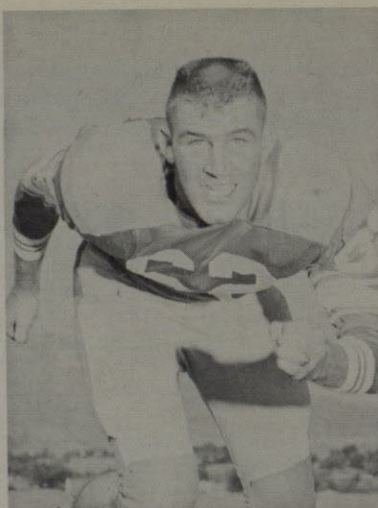
Miners Smash Buffaloes, 29-12

The use of alternate teams by TWC proved successful in the game against West Texas State.

Bob Laraba scored three of the Miner touchdowns and passed to Jackie Meeks for the other.



BILL HANNON
Guard



AARON CRANFORD
Guard



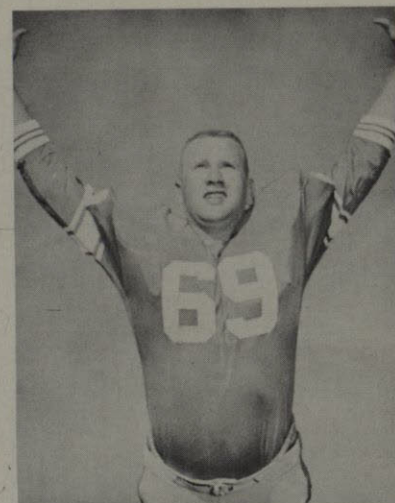
DOYLE WATKINS
Guard



CLIFTON DARDEN
Guard



JOHN COWAN
Guard



BILL LEWIS
Guard

Aggies Defeat Miners, 17-16

A 13-yard field goal by New Mexico A&M provided the margin for victory in the Aggie-Miner contest.

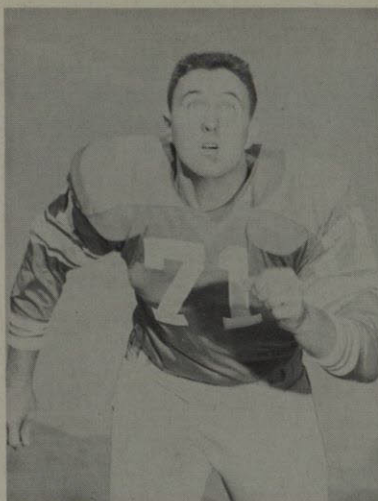
The Miners scored first with a safety, but the Aggies led at half time, 14-8. Their field goal came in the second half and they were able to hold the Miners off at the end of the game.



Let's play ball!



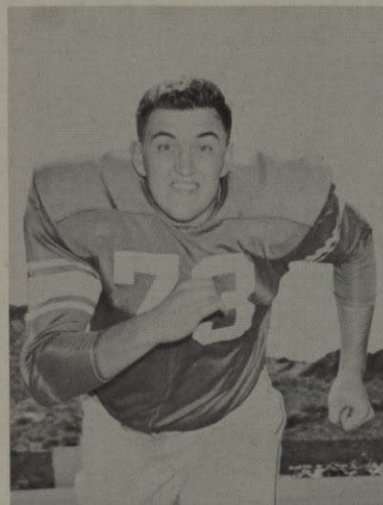
DAN BOYD
Tackle



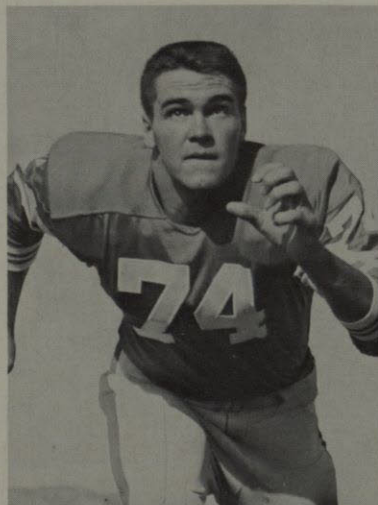
NOEL BARFIELD
Tackle



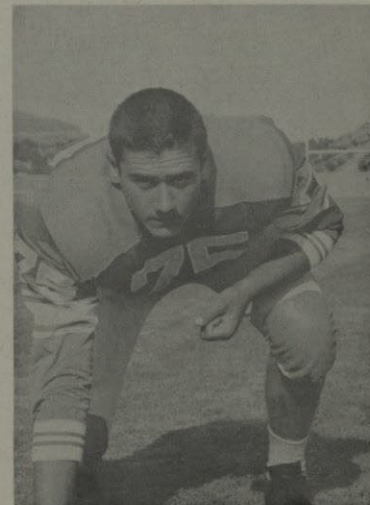
JIM JOHNSON
Tackle



ROBERT BOBO
Tackle
All Conference



JAMES HARVEY
Tackle



DON McGEHEE
Tackle

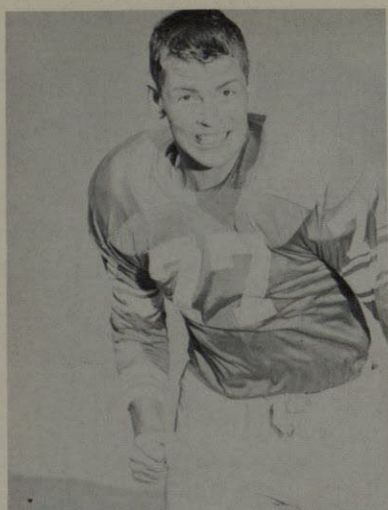


H-SU Defeats Miners, 14-6

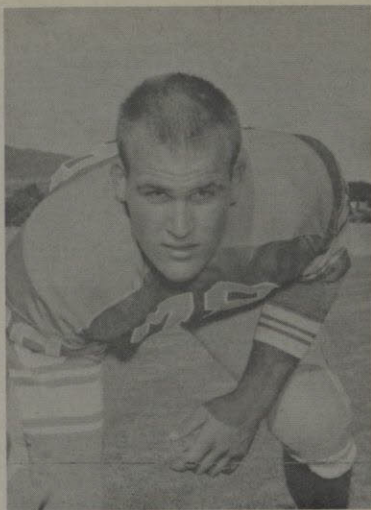
Hardin-Simmons handed the Miners their second conference loss. The Cowboys led 14-0 at the half.

Larry Meeks scored the Texas Western touchdown in the fourth quarter.

A bad arm didn't stop him!



RONNIE ALLDREDGE
Tackle



BILL KING
Tackle



ALDEN GEORGE
Tackle



KENNETH ZARING
End



MIKE FURMAN
End



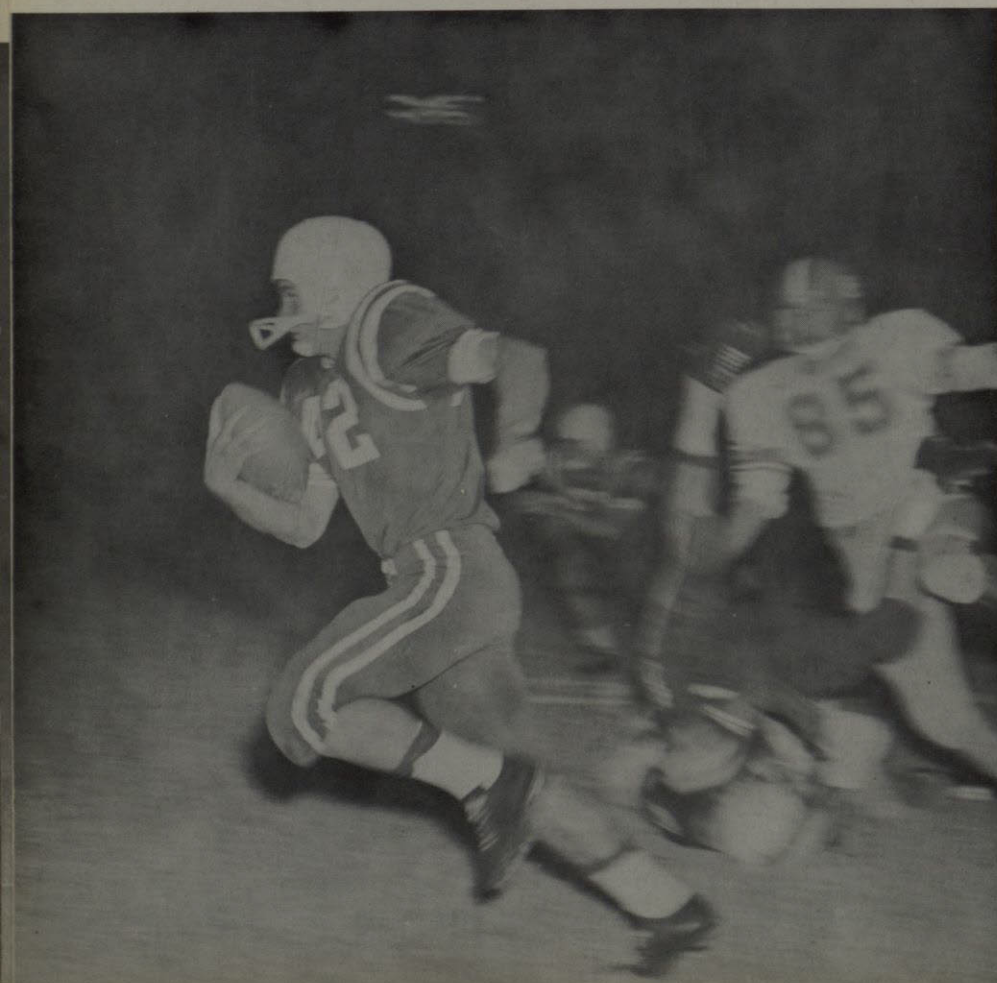
BENNIE LYBRAND
End

Tempe Beats TWC, 27-0

The Miners' fifth loss of the season came at the hands of the Sun Devils of Arizona State at Tempe.

The Arizona State game was followed by the line-up changes that put Bob Laraba at end and moved John Furman to first team quarterback.

Stop Him!





RICHARD ALSUP
End



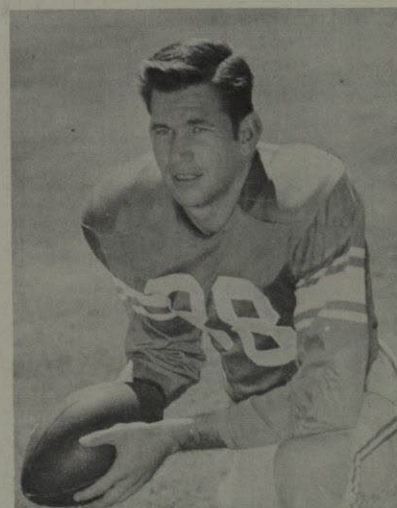
TERRY PRATT
End



MANLIO DeSANTIS
End



PAUL PAXSON
End



LEE ALLEN JONES
End

Arizona Defeats Texas Western, 14-12

Two missed extra point attempts cost the Miners a tie in the game against Arizona University.

Texas Western's scoring all came in the second half, both touchdowns being scored by Glenn Reed.

The Miners finished out the season with a loss to Trinity University.

Nothing can stop a Miner!





Ruthie Kaplan
Homecoming Queen



Duchess
SARA EAKER



Duchess
CHARLOTTE WALKER

H O M E C O M I N G

Duchess
JAN BREEDLOVE



Duchess
GLENDA ELDERIDGE

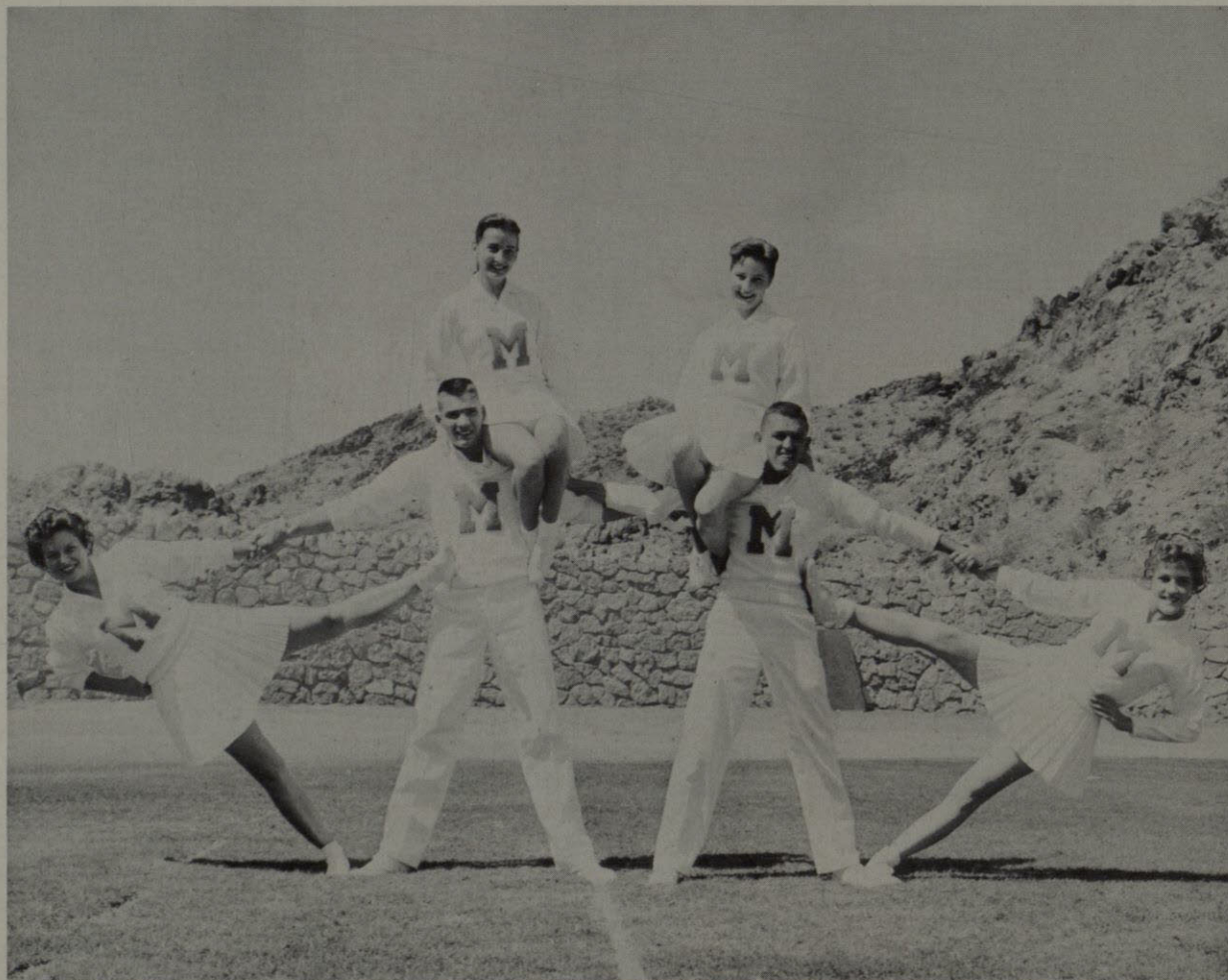




BONNIE TOMAN



BRENDA GROSE



(L. to R.) Brenda, Paul Danios, Bonnie, Martha Lou, Bob Rios, and Eugenia.



MARTHA LOU FLORENCE



EUGENIA NIEHAUS



Row 1: Rosemary Morris, Nina Keeler, Rosalie Hurt, Lee Murphy, Druscilla Wright, Sharon Street, Kay Young, and Helen Alfrey, Betti Ann Davis.

Row 2: Patti Busch, Sue Richardson, Naomi Molina, Yvonne Yapor, Marsha Hail, Brenda Henderson, Susie Sims, Estella Flores, Sally Eiber.

Row 3: Beth Mead, Sandra Treadwell, Ann Treece, Alice Reinhart, Jane Cram, Dee Ann Stevens, Glynda Parker, Patt McNamara.

Row 4: Sue Bolton, Ronda Cole, Sandra Chatterton, Nancy Latham, Gail Davis, Diane Fisher, Gretchen Winnat, Ruthie Kaplan, Natalie Winter.

Row 5: Janet Taylor, Judy Moore, Faye Higgins, Emmy Knotts, Ann Parsons, Nancy Schaffer and Kay Knight.



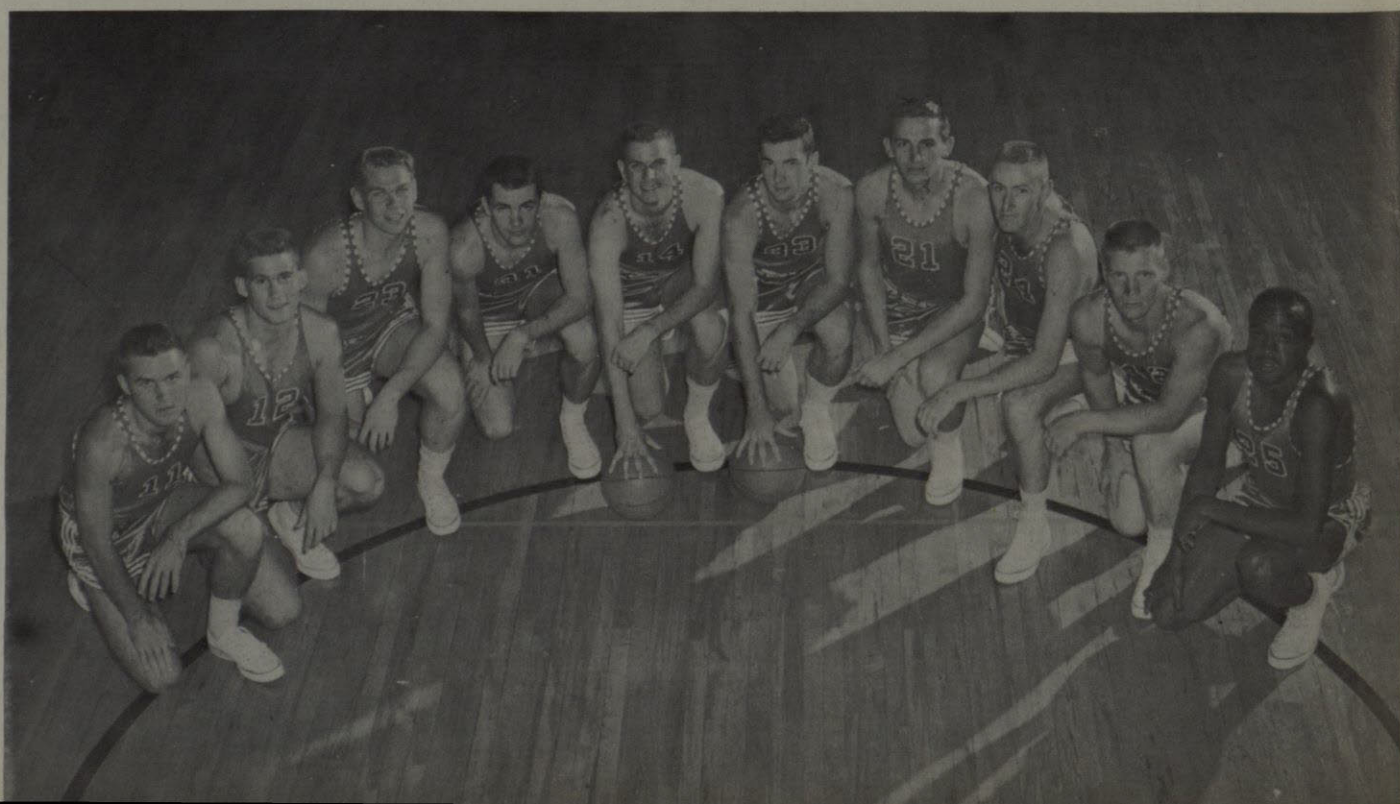


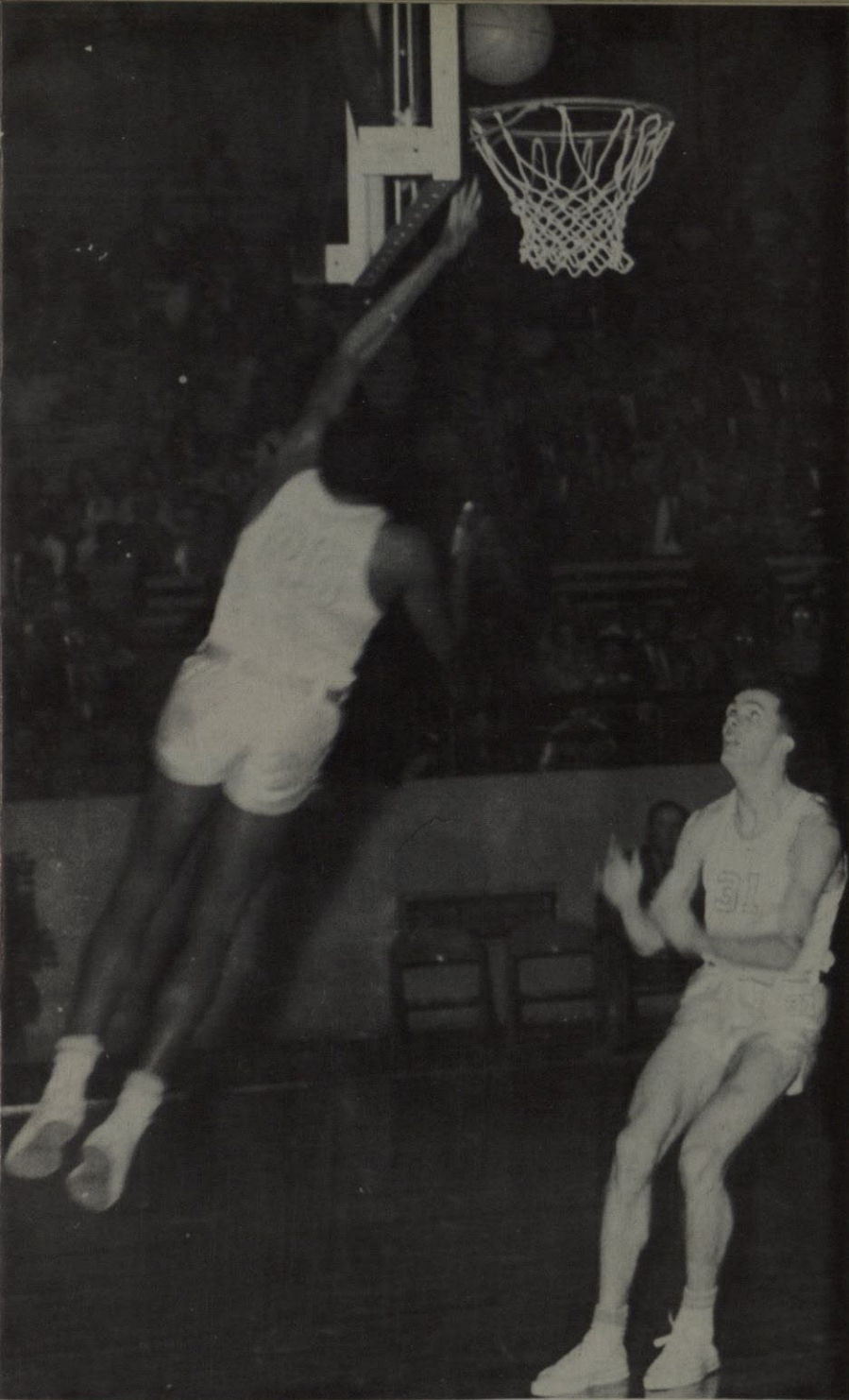
VARSITY BASKETBALL RUNNERS UP IN BORDER CONFERENCE

Coach
GEORGE McCARTY

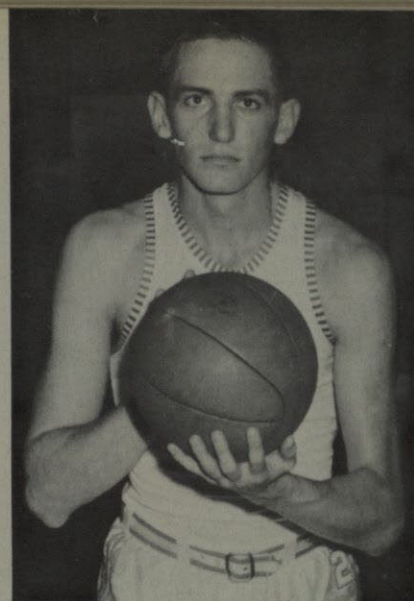
The 1958-59 Varsity Basketball Team

Left to right: Don Martin, Hans Fields, John Corcoran, Jon Sanders, captain; Don Vollintine, Bobby Knight, Don Burgess, Jack Burgess, Jerry Gilley, Charles Brown.

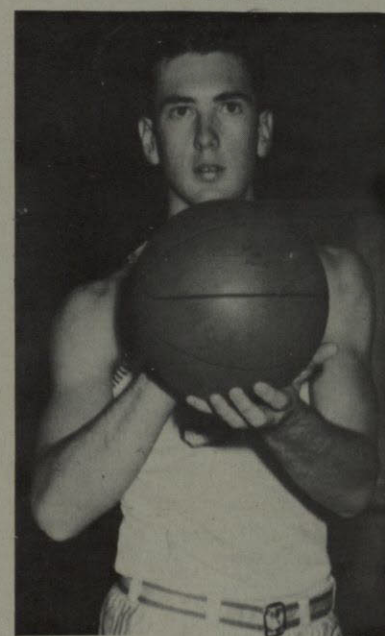




Charlie Brown scores another as Sanders watches.

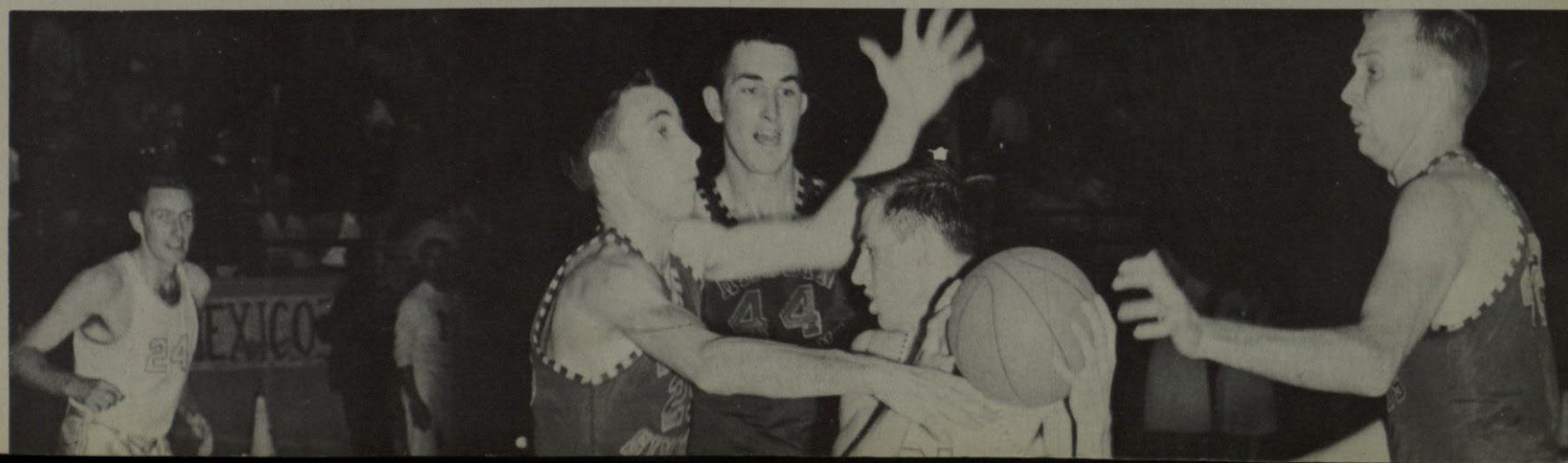


DON BURGESS
6 ft. 3-in.

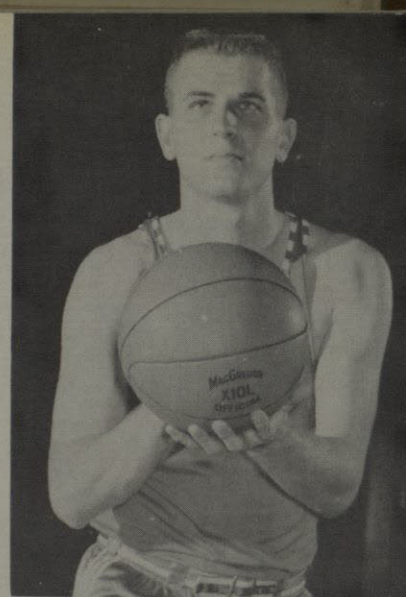
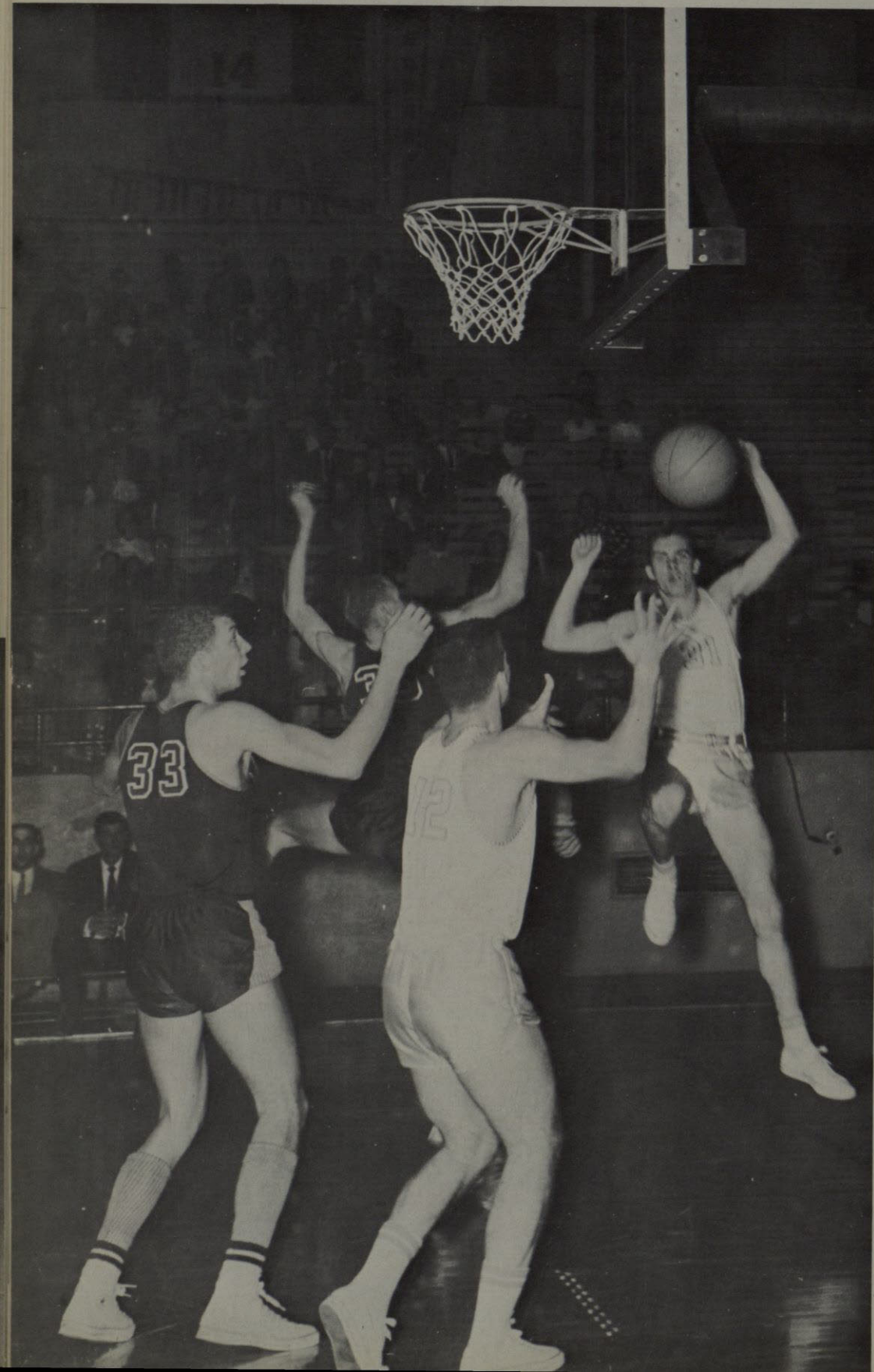


BOBBY KNIGHT
6 ft. 3-in.

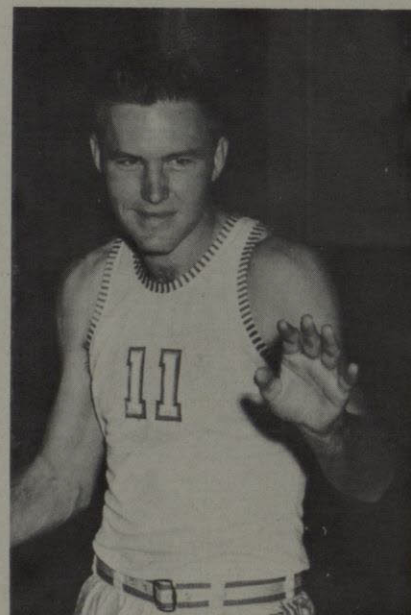
The Burgess brothers in action against Hardin-Simmons



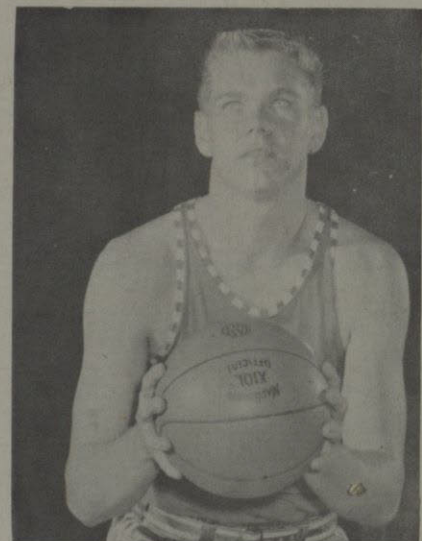
Sanders and Fields in the victory over the Buffs



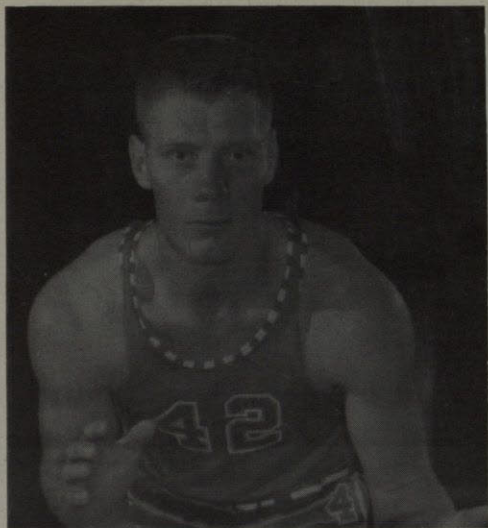
DON VOLLINTINE
6 ft. 4-in.



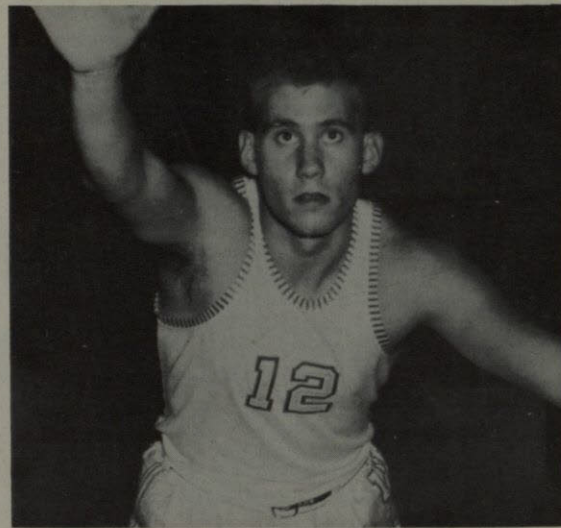
DON MARTIN
6 ft. 1-in.



JOHN CORCORAN
6 ft. 4-in.



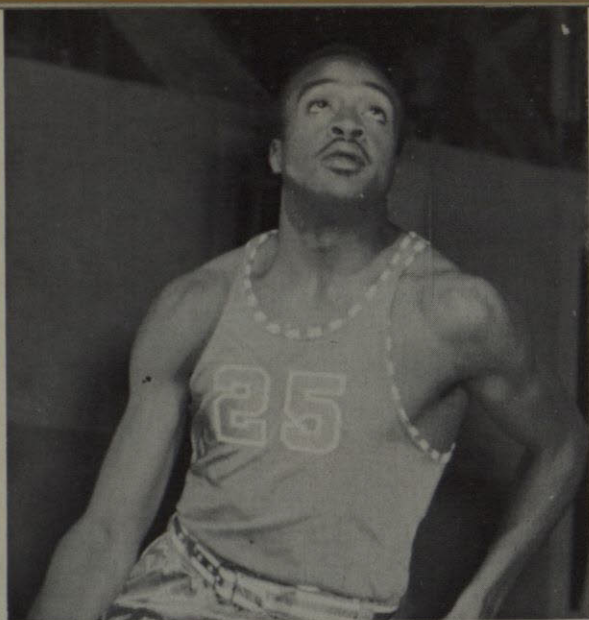
JERRY GILLEY
5 ft. 10-in.



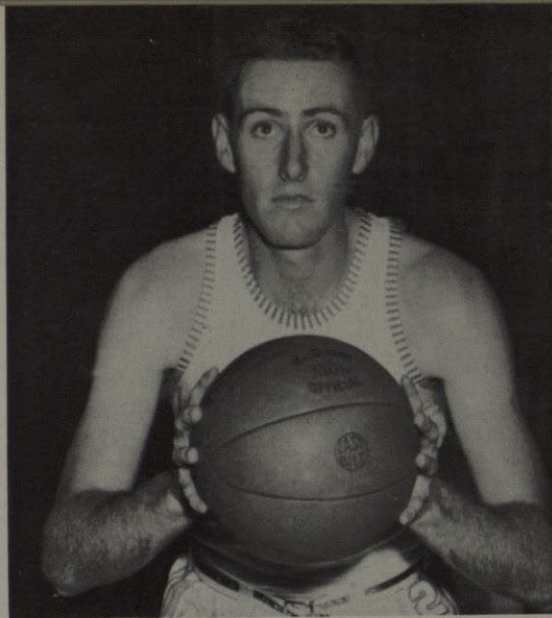
HANS FIELDS
6 ft. 3-in.

The Miners in action against West Texas State





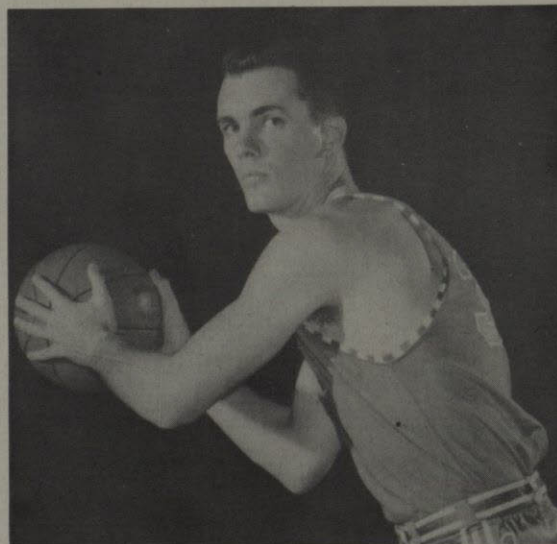
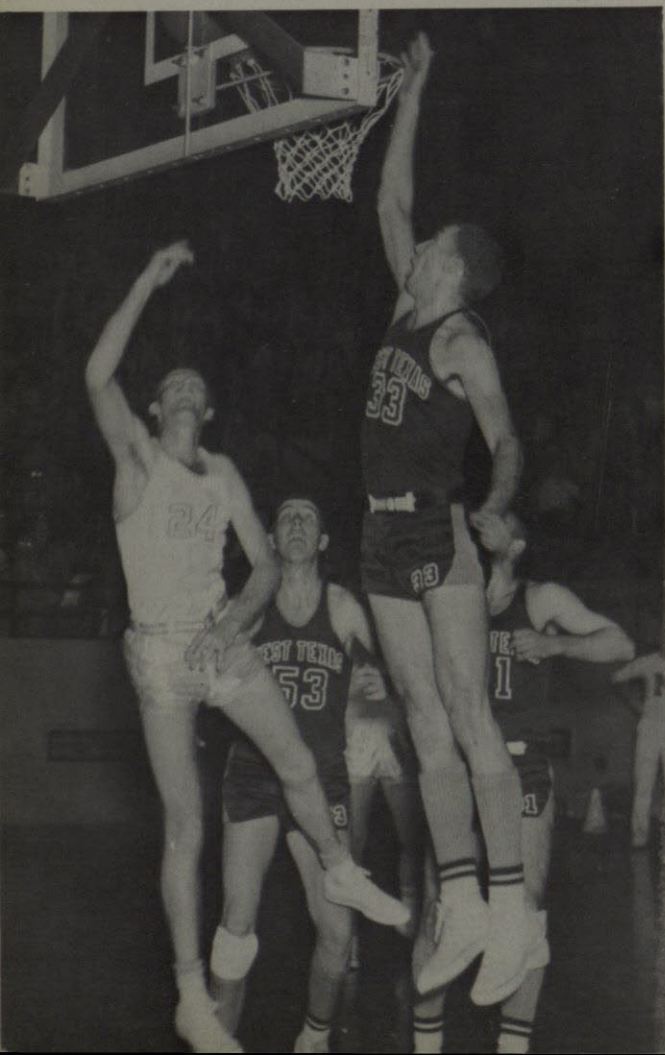
CHARLES BROWN
6 ft.



JACK BURGESS
6 ft. 1-in.

TWC BOYS SHOOT FOR BC TITLE

Jack Burgess and Milt Fitts of the Buffaloes
competing for a rebound

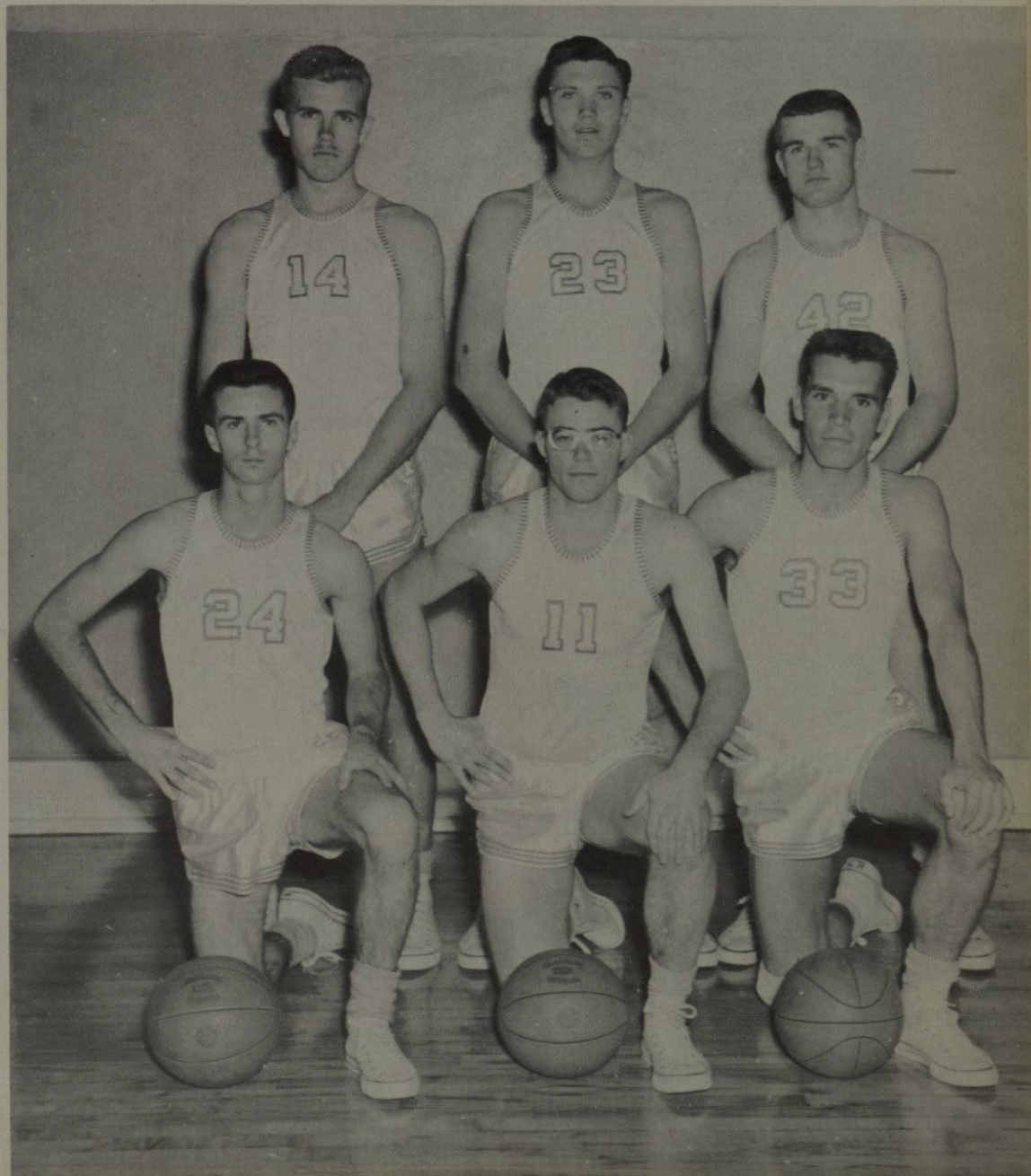


JON SANDERS,
Captain
6 ft. 3

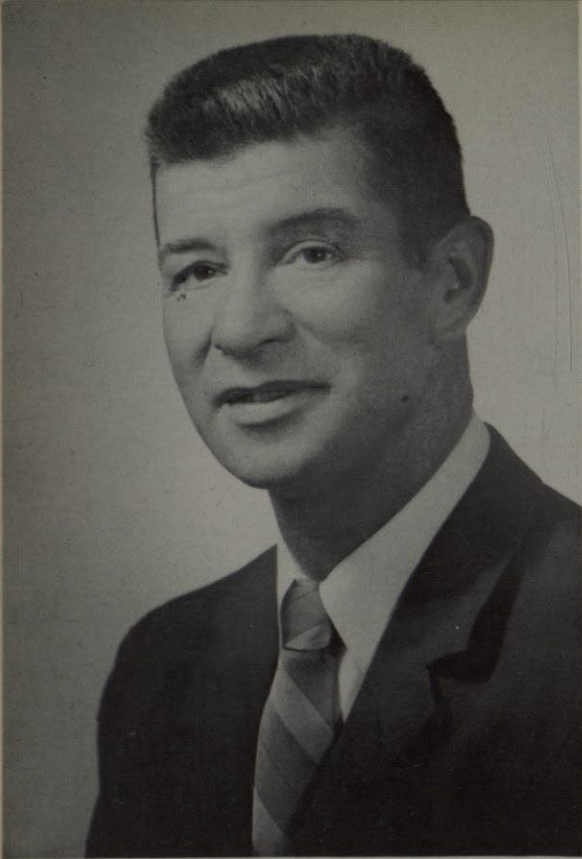
FROSH TEAM GAINS GOOD EXPERIENCE

The 1958-59 Freshman Basketball Team

Left to Right, back row: Martin Turner, Stanley Morrison, John Furman; front row, left to right: Ronnie Paulk, Jimmy Weller, Mike Solis. Not pictured, Pete Rayon



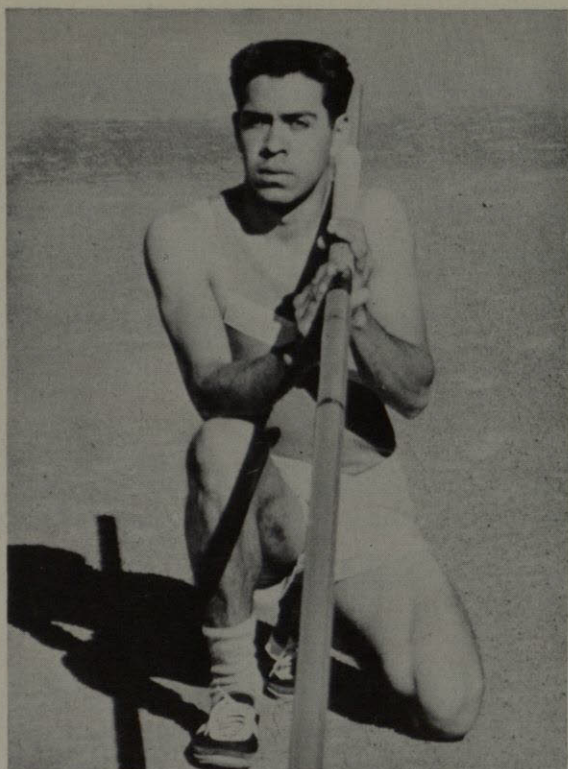
Coach
JIMMY WALKER



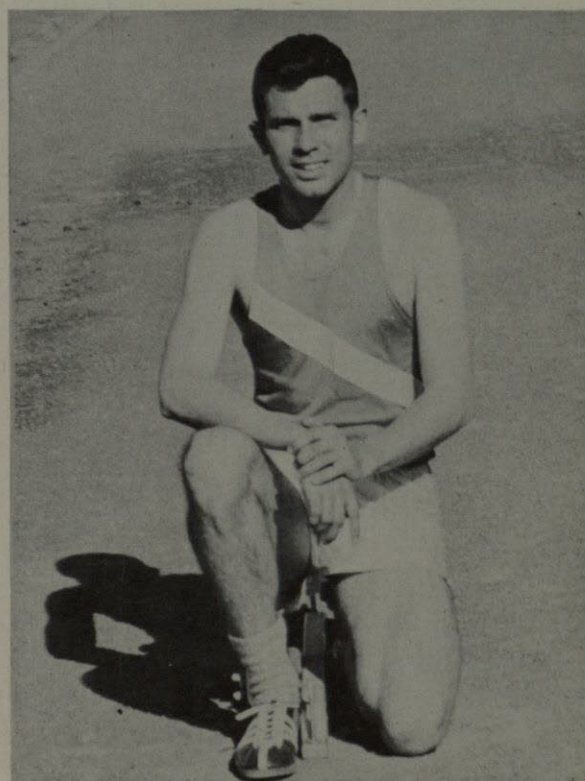
TRACK COACH ROSS MOORE

Left to right: John Hall, Paul Zeek, Coach Moore demonstrating training room equipment, Dale Allen, Alfred Valles





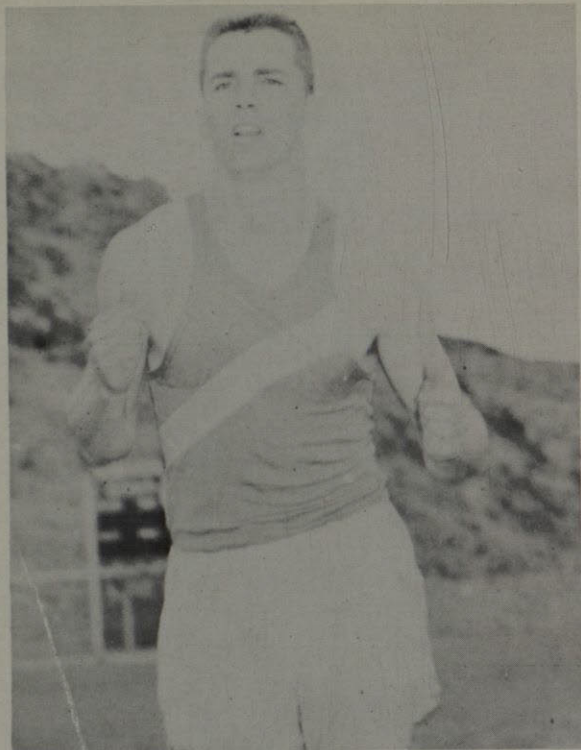
JOE STARLING



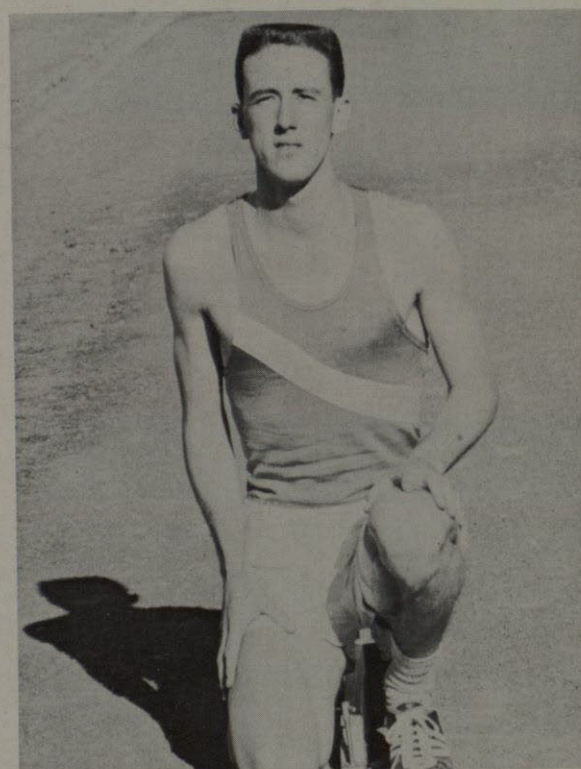
JOHN HALL



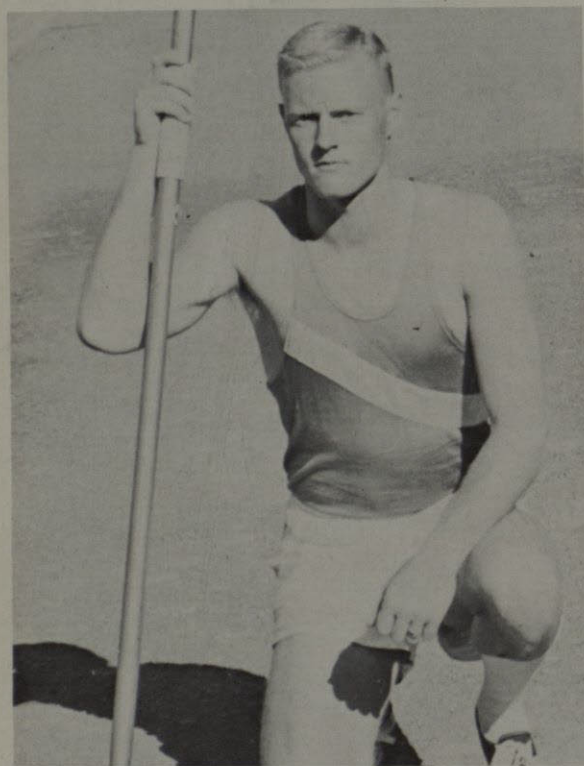
W. A. KENNEDY



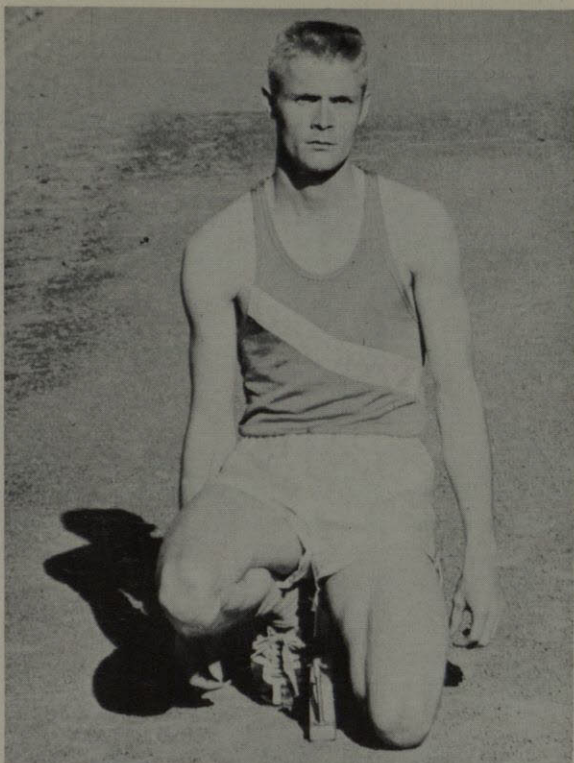
JON SANDERS



TOMMY WALL



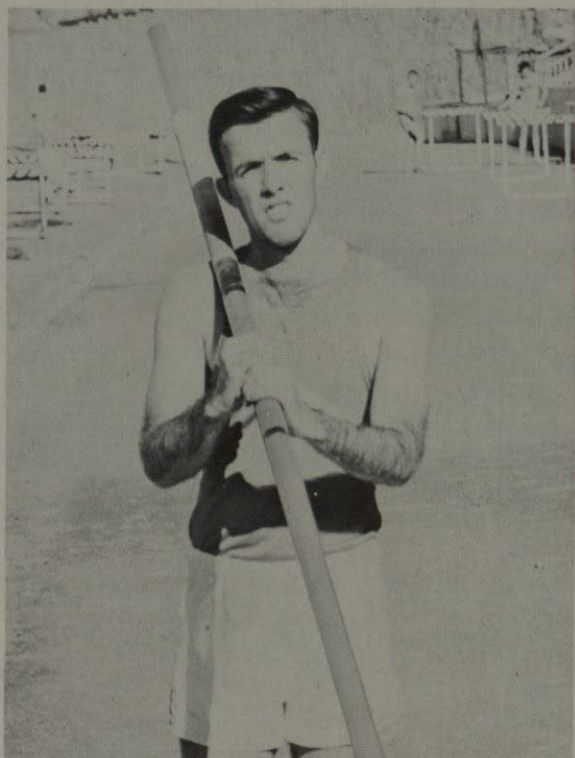
BILL VOKES



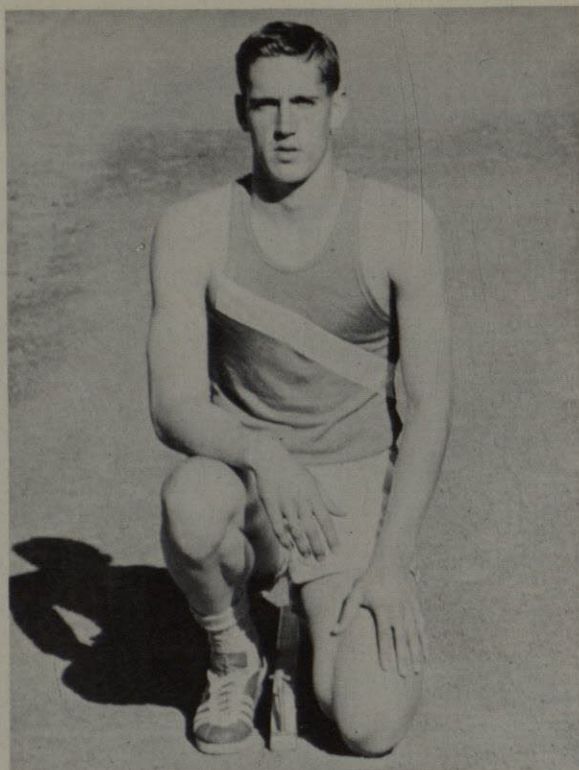
GUS RICHERS



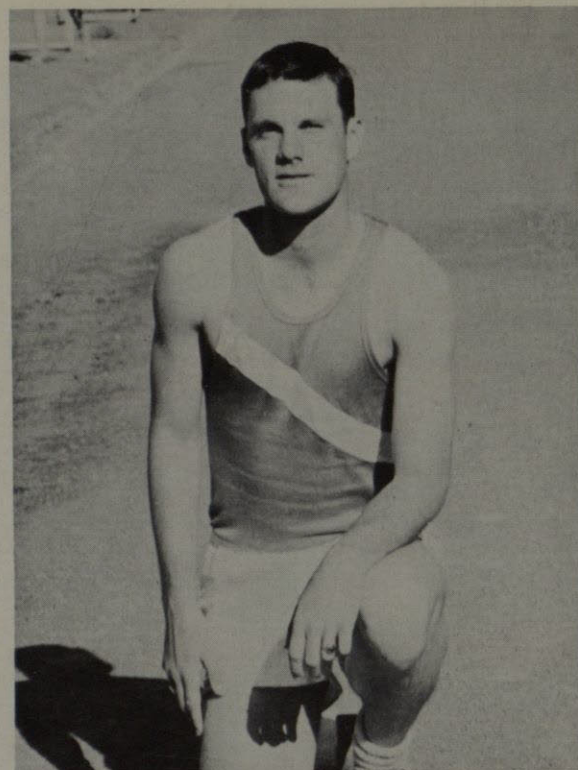
DANNY ELKINS



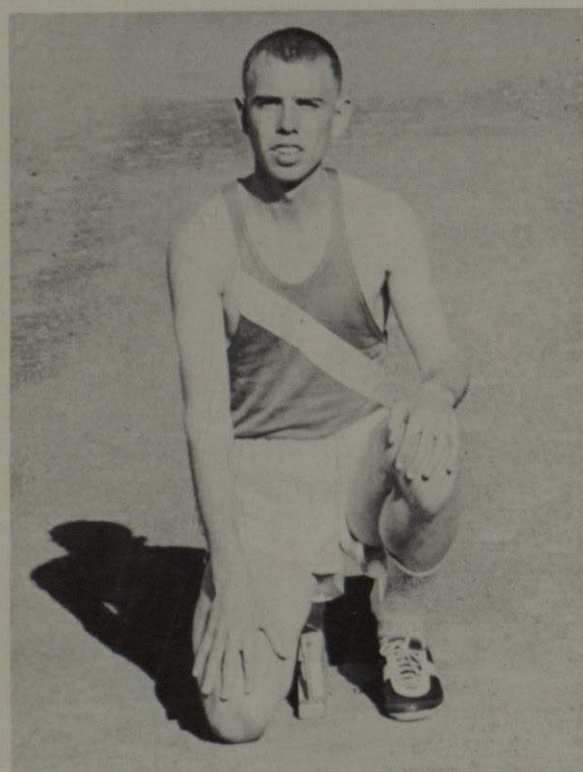
DALE ALLEN



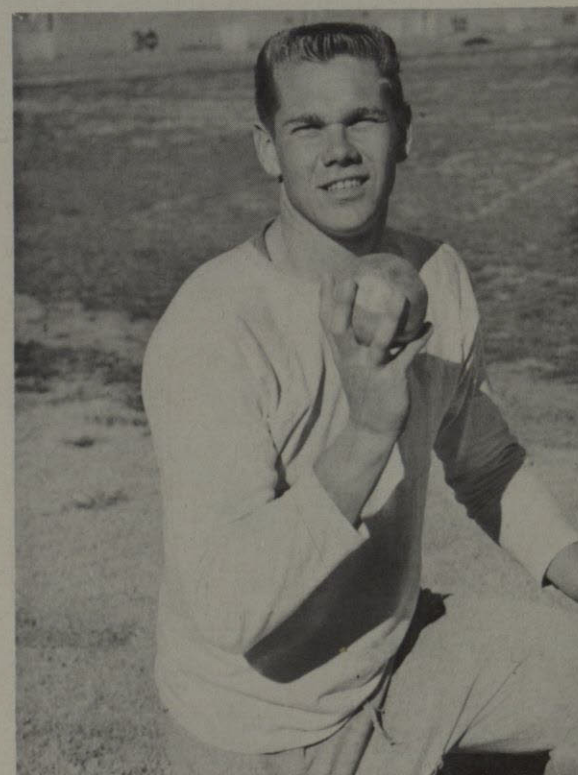
JIM FISCHER



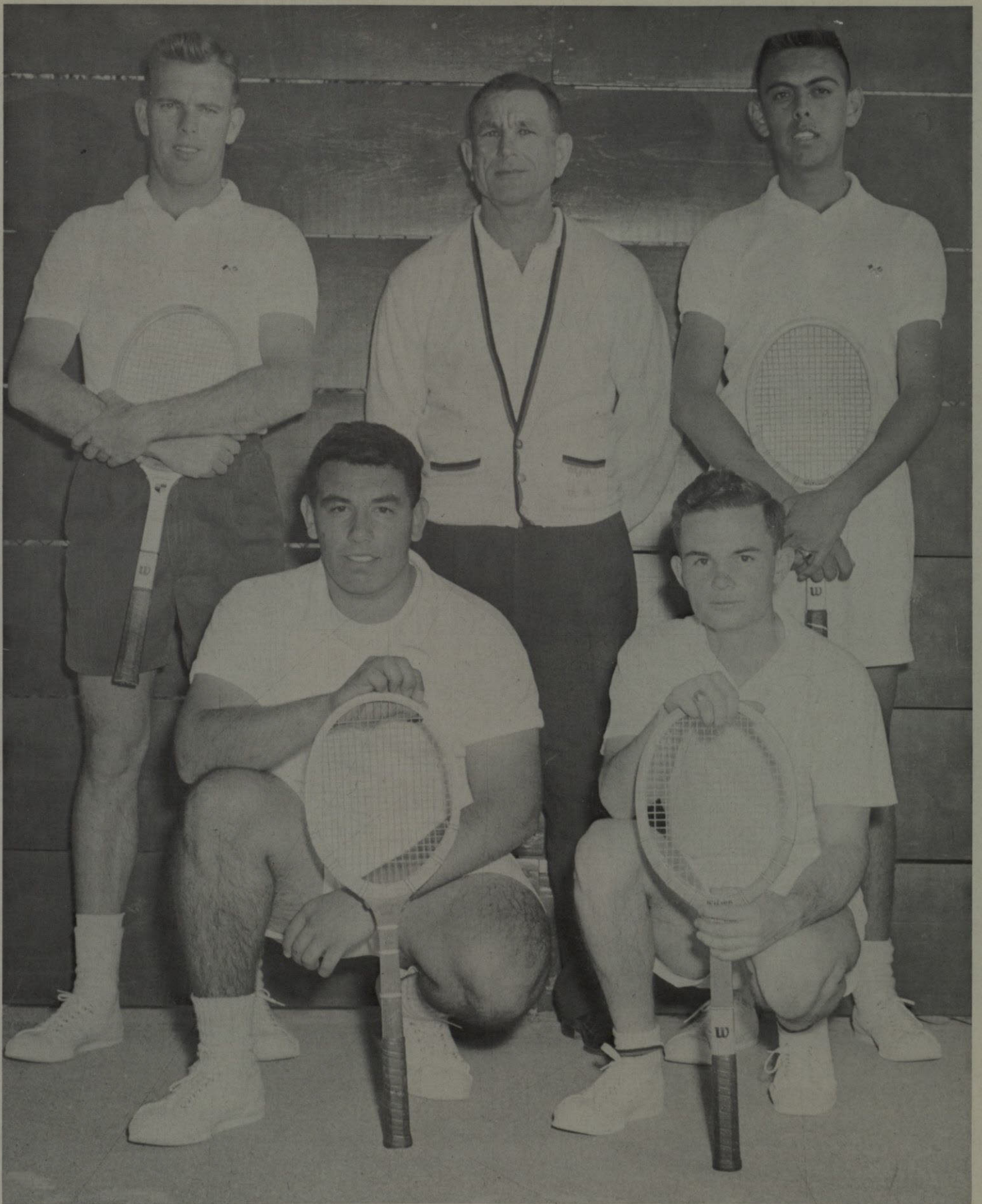
TIM CASNER



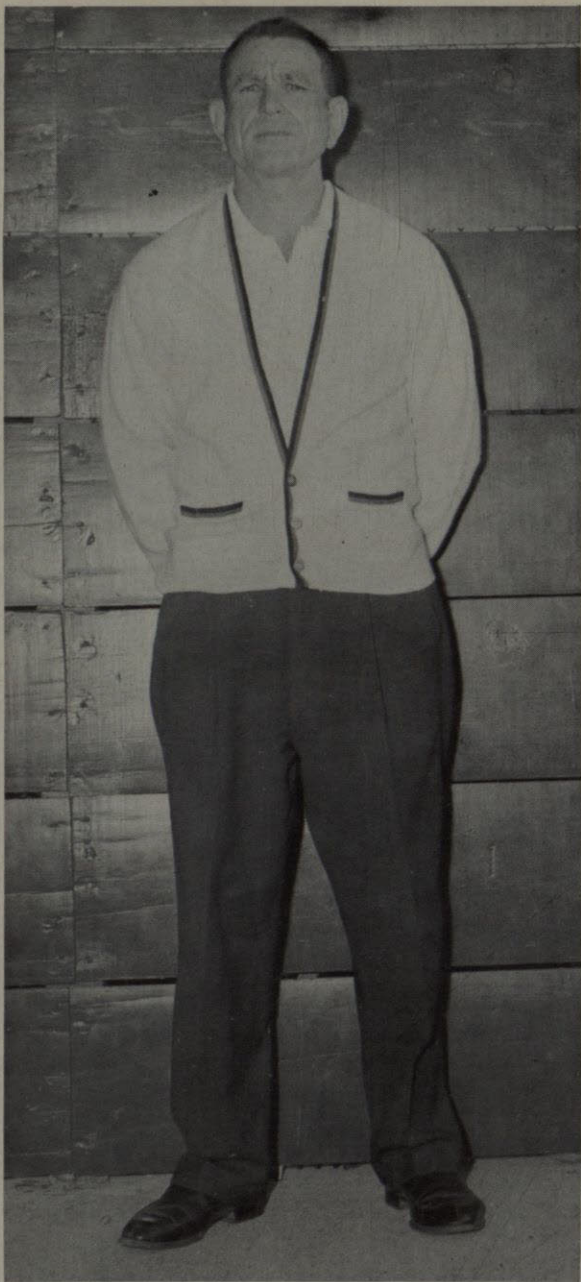
ROBERT SMILEY



JOHN CORCORAN



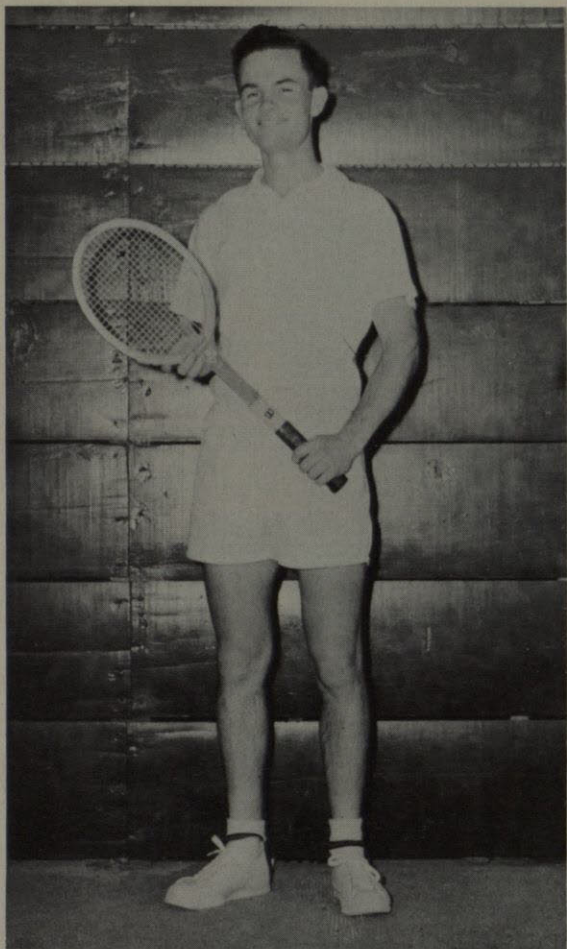
The 1958-1959 varsity tennis team. Front row left to right, Ateno Garcia, Paul Paynter; back row from left: Rollin Russell, Coach Louis Kahn, Arthur Napoles.



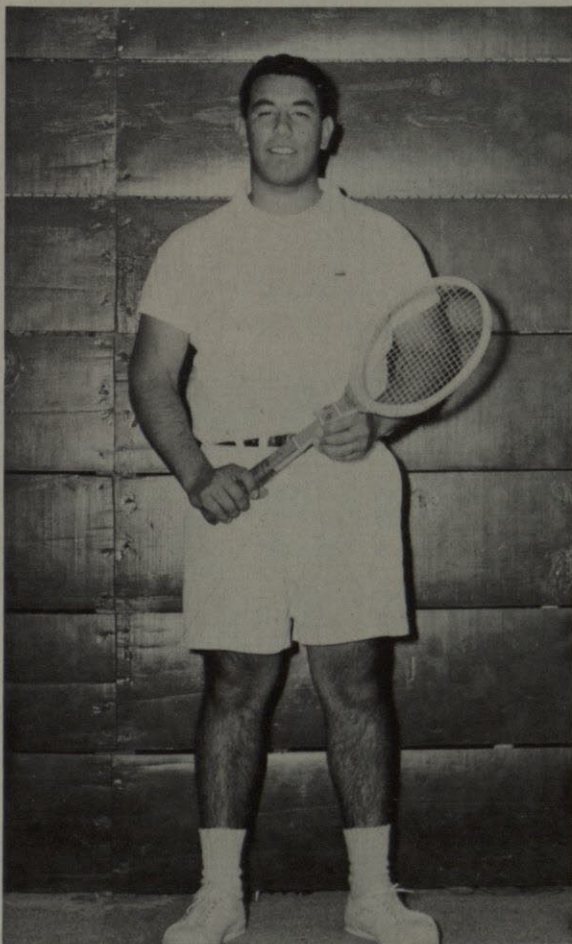
COACH LOUIS KAHN



ROLLIN RUSSELL



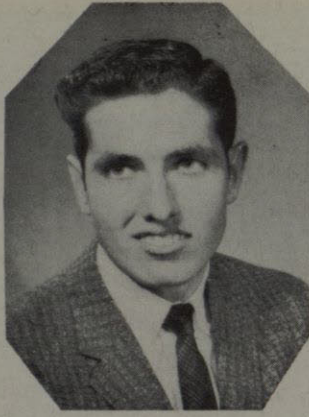
PAUL PAYNTER



ATENO GARCIA



ARTHUR NAPOLES



BOB SUMMERFORD



RICHARD CARTER



DAVID JOHNSON



HENRY RETTIG



BILL ALBRECHT



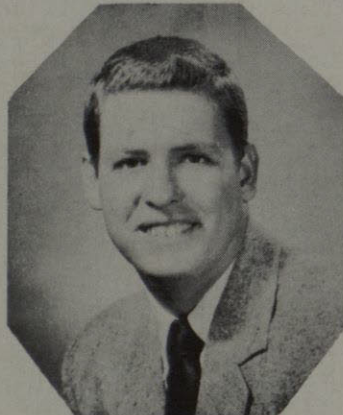
JIM SPIER



DON SULLIVAN



DON McCLURG



JOHN SCHMIDT



JIM MATLOCK



JACK RHOADES

ALL-INTRAMURAL TEAM includes three players from APO, two each from SAE and Pre-Med. Also represented PKT, LXA, Hudspeth and Worrell Hall. Not shown in Carlos Zamora of Newman Club.

INTRAMURAL PROGRAM OFFERS 10 ACTIVITIES

INTRAMURAL DIRECTOR
George Arms conducted murals program.

Rain, holidays and schedule conflicts all tried to slow the '58-59 intramural program but did not impede the progress of the year-long agenda of 10 sports activities.

Co-ordinator of the program was George Arms, intramural director. He was aided by student assistants Bob Summerford and Art Marvin during the second semester.

More than 500 students took part in the overall program, which included five major sports and five minor activities.

Beginning at the end of September, men participated in volleyball, basketball, ping pong and badminton. In the second semester, touch football, tennis, track, softball, swimming and golf were offered.

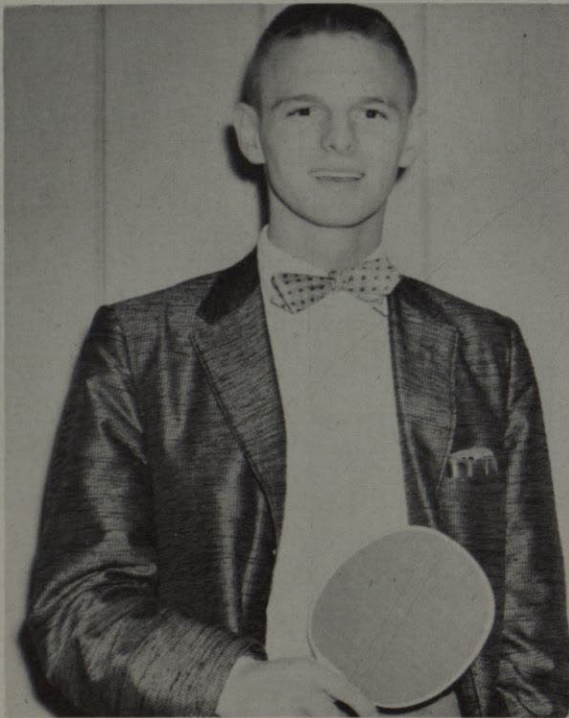
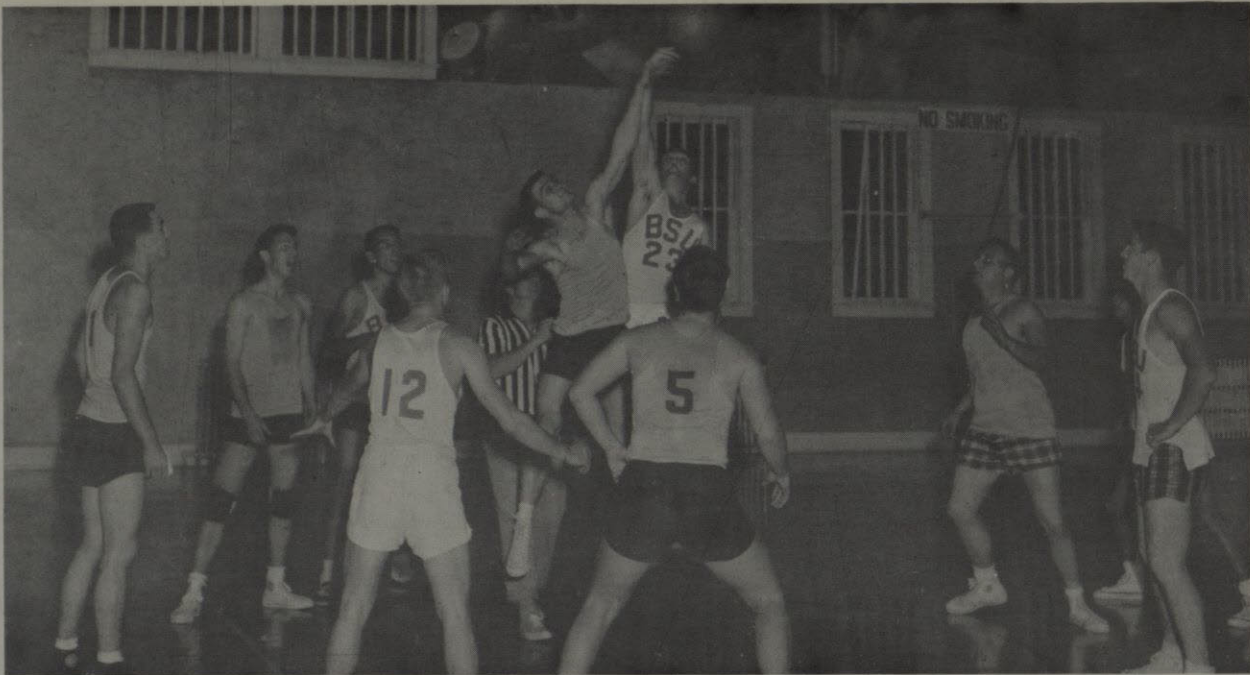
The Pre-Med Club showed surprising strength throughout the first semester in compiling 745 points to APOs 560 and SAEs 426. In fourth place was KS, followed by Hudspeth, BSU, LXA, Worrell, Newman and PKT.



BASKETBALL—A double triumph was scored by Pre-Med when they beat out APO and SAE to win the basketball crown, second major sport of the year.

TOUCH FOOTBALL displays of ability and prowess are the difference between winning and losing intramural games. Here Sigma Alpha Epsilon uncorks an aerial attack.

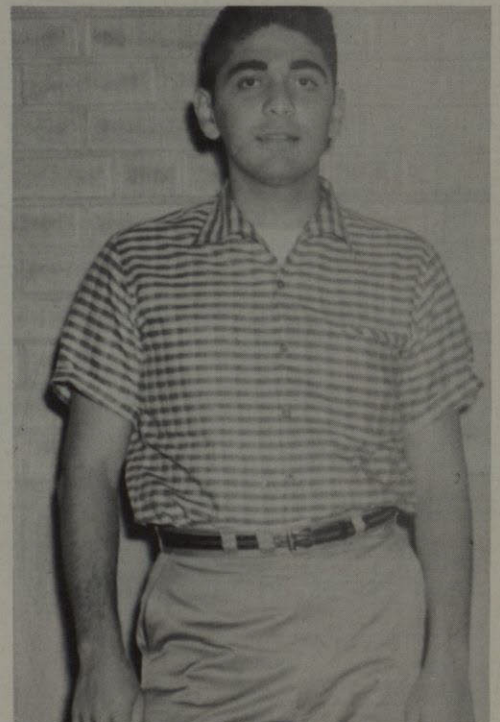




JOHN SHERMAN looks sharp behind business end of ping pong paddle.

PING PONG

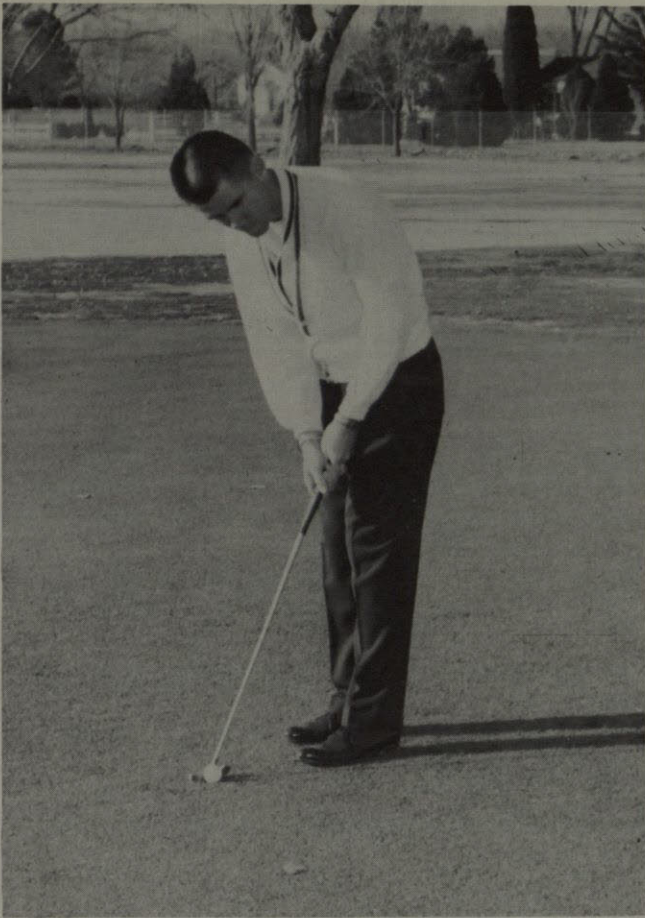
John Sherman of Pre-Med copped the table tennis crown by defeating Maurice Coleman of Huds-peth. Sherman also won the doubles crown with the help of team-mate Fred Ekery.



FRED EKERY contemplates future laurels in table tennis tourney.

INTRAMURAL FIELD was site of spirited play between football squads of both independents and fraternities.





JACK McVEIGH lines up putt before holing out on 18th green.



JIM MELTON selects pitching wedge for shot across trap to pin.

DAVE BIRKELBACH will be a strong contender for next year's badminton crown.



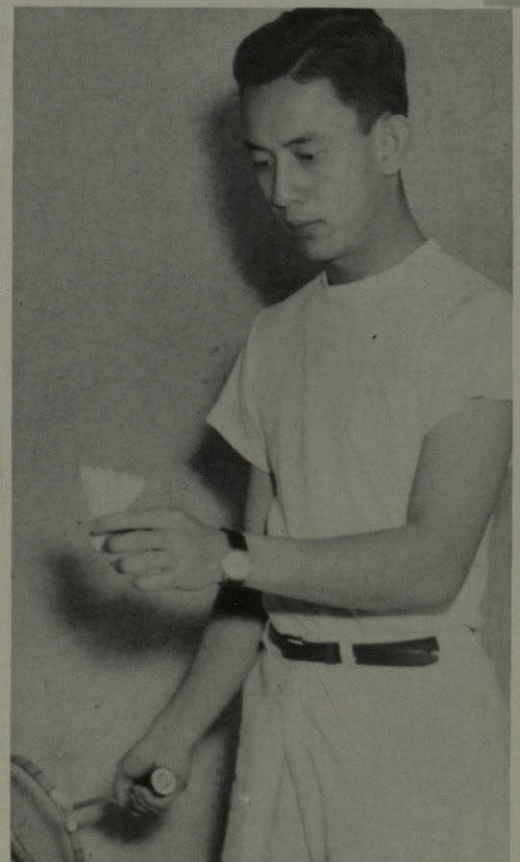
GOLF

Sigma Alpha Epsilon easily won the golf title when Jack McVeigh, medalist, teamed with James Melton to sweep the tourney. In runner-up spot was Phi Kappa Tau, led by Weldon Donaldson.

BADMINTON

Jok Long of Baptist Student Union was crowned Badminton champion after he defeated Dave Birkelbach of Kappa Sigma. Long then came back to capture the doubles as he teamed with Dale Jones.

JOK LONG shows the form that made him champion of the badminton courts.



COMPETITION INTENSE IN WOMEN'S MURALS

Women's intramural play is always spirited with intense rivalry that makes for the fine competition.

More than 100 women participated during the year in 7 sports—volleyball, basketball, tennis, ping pong, badminton, softball, and swimming.

The Independent girls jumped into an early lead in the women's intramural race as they won the volleyball tourney. Tri-Delta finished second with Chi Omega third.

A double triumph was scored by the Independents as they won the basketball crown, second major sport of the year. Chi Omega was second and Tri-Delta third.

Results of other sports were not available at the time of the Flowsheet deadline.

