

In the early days of the college, summer brought a thirty day sorti to the field for the future mining engineer. The MINERS housed their equipment in field tents while they learned operations first hand.

The Santa Juliana Mine, at Sabinal, Mexico, is typical of those early day operations. The picture shows a typical student-sponsor group with several of the college officials of those years.

Several years after this photograph was taken, this type trip was abandoned, and the work transferred as much as possible to the classroom and laboratory.





Widened in scope, with degrees given in electrical, civil, and mining engineering, laboratories today cover broad fields of engineering problems.

Scale models of engineering works are made by civil engineering students to obtain practice in planning, reading, blue prints, and construction details.

Here students are putting the finishing touches on a model of a street intersection.



JANICE MICHENER
A. I. E. E. Sweetheart



HELLYN RECTOR
Engineering Queen
Elected by the Engineering Students



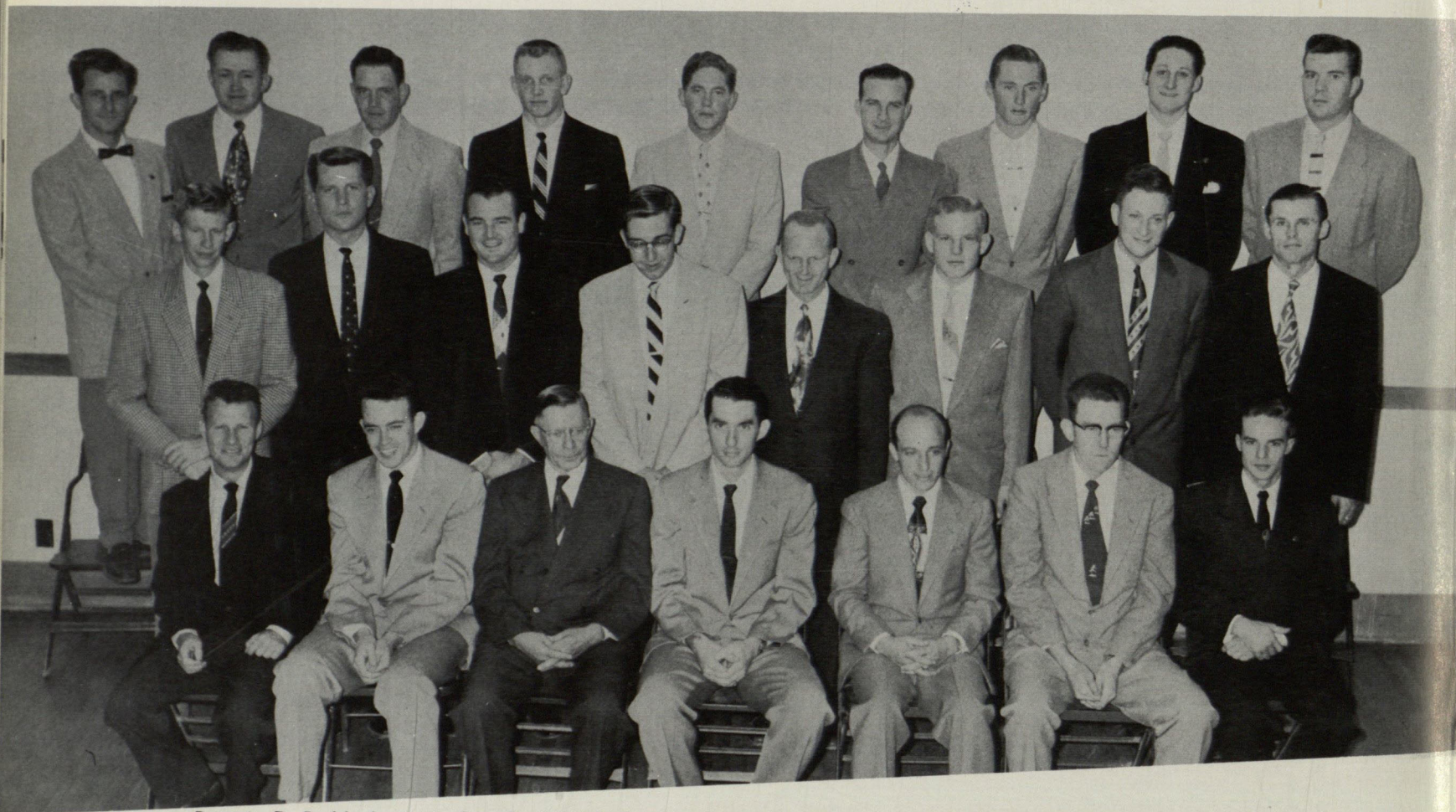
SANDRA FLAIS
S. O. E. Sweetheart



Row 1: Mando Gutierrez, President; Ysela Porras, Mr. J. R. Ballentine, Sponsor; Jim Chamness.
Row 2: Ronald McCarty; Humberto Sambrano; Donald Buddecke.

THE ENGINEERING COUNCIL

The Engineering Council, which is composed of representatives of each engineering organization on the campus, coordinates all engineering activities that occur during the school year. This includes the Engineer's Bean Feed, Saint Pat's Day, and the Hard Luck Dance.



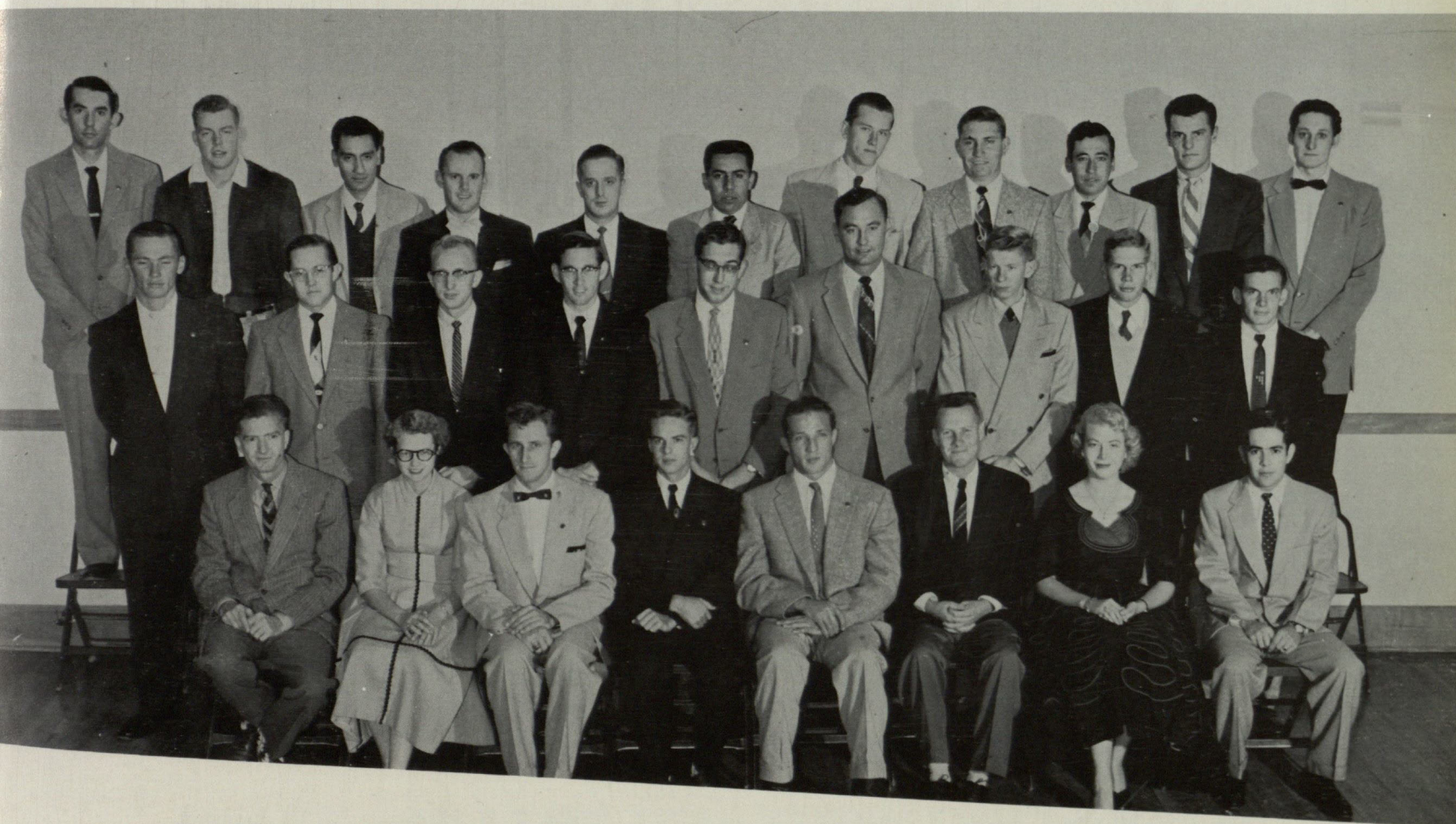
Row 1: D. Buddecke, J. J. Cox, Dr. L. A. Nelson, P. G. Gray, J. Roberts, G. Crouch, C. J. Staffa.
 Row 2: F. Lofftus, S. Nelson, J. Scales, J. Westrope, W. Hunter, R. Sense, R. Wershaw, R. Hall.
 Row 3: E. V. Bravenec, C. Gregory, T. Cliett, B. Hamric, R. Maier, R. Eason, J. Chamness, E. Jimenez, R. Torkleson.
 Missing: R. Jensen, N. Jeter, L. Pittman, G. Rodriguez, W. Roser.

SIGMA GAMMA EPSILON

In 1940 the Alpha Lambda Chapter of Sigma Gamma Epsilon, national honorary society for students of the earth sciences, was organized at Texas Western. Initiates must have above average grades and be able to present a technical paper prior to graduation. The Society works toward a closer interest in the allied fields of geology, mining, metallurgy, and petroleum engineering.

Officers: Dr. L. A. Nelson, Sponsor; P. G. Gray, President; J. J. Cox, Vice-President; G. Crouch, Corresponding Secretary; J. Roberts, Secretary-Treasurer.





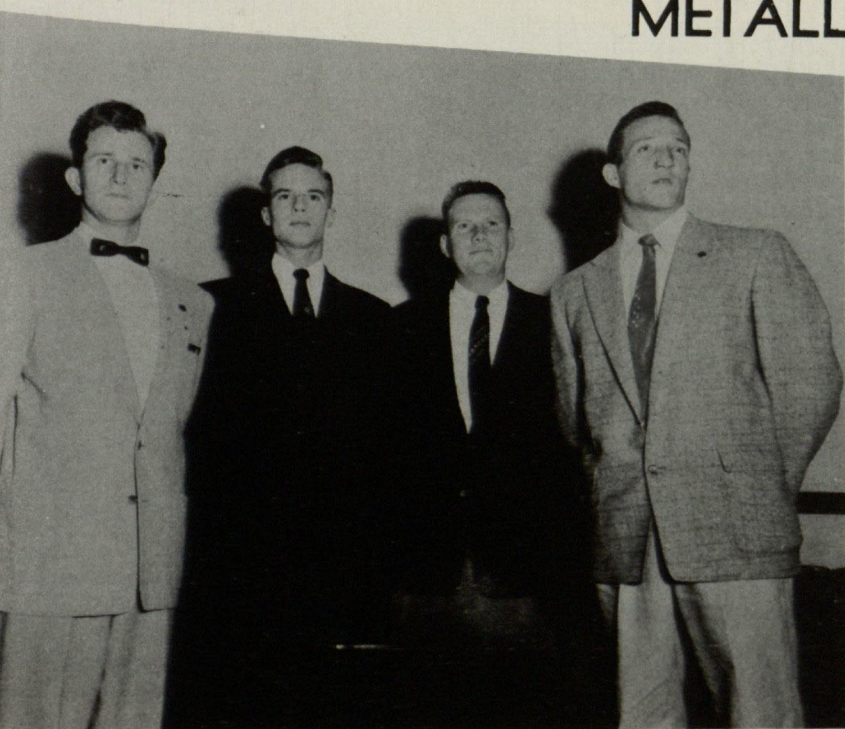
Row 1: H. Smith, S. Jorgenson, E. V. Bravenec, C. J. Staffa, H. Bartell, D. Buddecke, S. Morrison, J. de la Fuente.

Row 2: J. Chamness, L. Pittman, L. Norris, B. Garner, J. Westrope, J. Laza, F. Lofftus, J. Hill, H. Holland.

Row 3: P. G. Gray, J. Cain, O. G. Echevarria, D. Gipson, J. Mock, J. Chorne, L. Buescher, K. Derrick, G. Rodriguez, R. Jensen, E. Jimenez.

Missing: Dr. J. C. Rintelen, Sponsor.

AMERICAN INSTITUTE OF MINING AND METALLURGICAL ENGINEERS



The history of the Texas Western chapter of the AIME goes back to the Scientific Club which was established at the College of Mines in 1915. The organization became a part of the AIME in 1944. The group stimulates interest in mining, metallurgy, geology, and petroleum, and promotes fellowship between the El Paso Metal Section of the AIME and the students.

Officers: E. V. Bravenec, Treasurer; C. J. Staffa, President; D. Buddecke, Vice-President; H. Bartell, Secretary; Missing: Dr. J. C. Rintelen, Sponsor.



Row 1: S. Schooler, F. Decker, H. Gschwind, D. D. Jores, H. P. Adkison, D. H. Schuhmann, W. W. Raymond, R. Ramirez.
 Row 2: F. Reid, W. Olmsted, G. Buchanan, D. Horton, R. Lopez, J. A. Ogaz, J. R. Eiland, L. H. Keeler, J. Oaxaca, L. Velez.
 Row 3: C. Harrison, L. C. Wade, D. Pfeifer, A. L. Napoles, H. Martinez, F. Moreno, J. Marshall, J. Kellen, G. Geno, A. Benavidez, M. Gomez, L. E. Owen.

AMERICAN INSTITUTE OF ELECTRICAL ENGINEERS

Texas Western's branch of the AIEE was organized in 1948 under the sponsorship of Mr. F. A. Decker. The aims of the chapter are the advancement of the theory and practice of electrical engineering, development of individual engineers and participation in inspection trips to places of engineering interest.

Officers: Mr. F. A. Decker, Sponsor; D. D. Jones, Vice-President; H. P. Adkison, President; D. H. Schuhmann, Treasurer; H. Gschwind, Secretary.





Row 1: A. Duran, R. Sanchez, B. Anderson, E. Bustamante, R. F. McDermott, L. Garcia, Jr.
 Row 2: A. Alvarez, D. Schoch, I. Aquirre, M. Gandara, E. Carreon, C. Casteel.
 Row 3: R. D. Collons, B. Lowman, D. Bied, A. Gutierrez, J. Vernon, R. Collier.
 Missing: Mr. P. C. Hassler, Jr., Sponsor.

AMERICAN SOCIETY OF CIVIL ENGINEERS



Students majoring in civil engineering are eligible for membership in the American Society of Civil Engineers. The Texas Western chapter was organized in 1947 to introduce the civil engineering student to topics of interest in civil engineering and to foster a development of professional spirit.

Officers: E. Bustamante, Vice-President; B. Anderson, President; R. F. McDermott, Treasurer; R. Sanchez, Secretary.
 Missing: Mr. P. C. Hassler, Jr., Sponsor

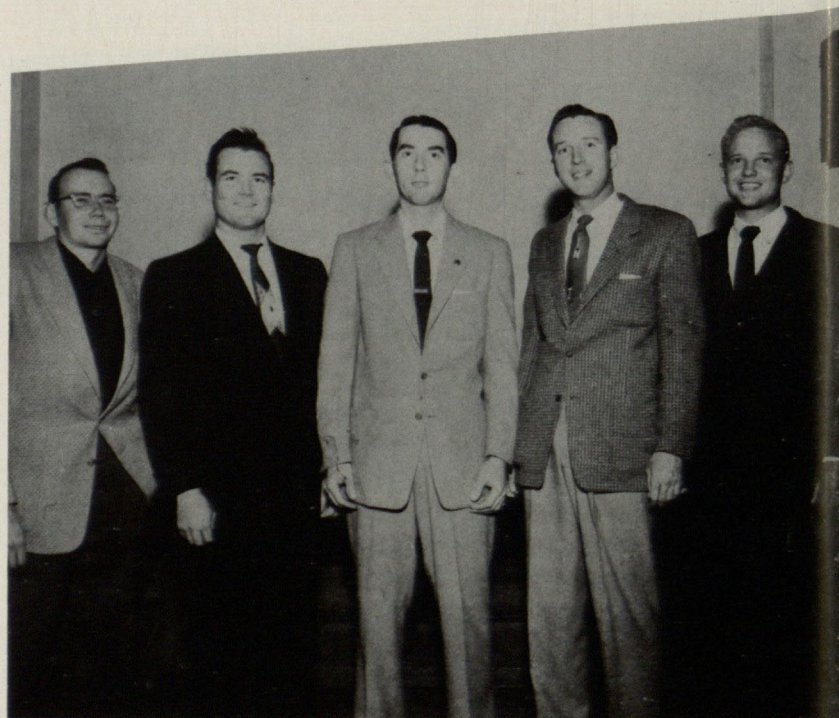


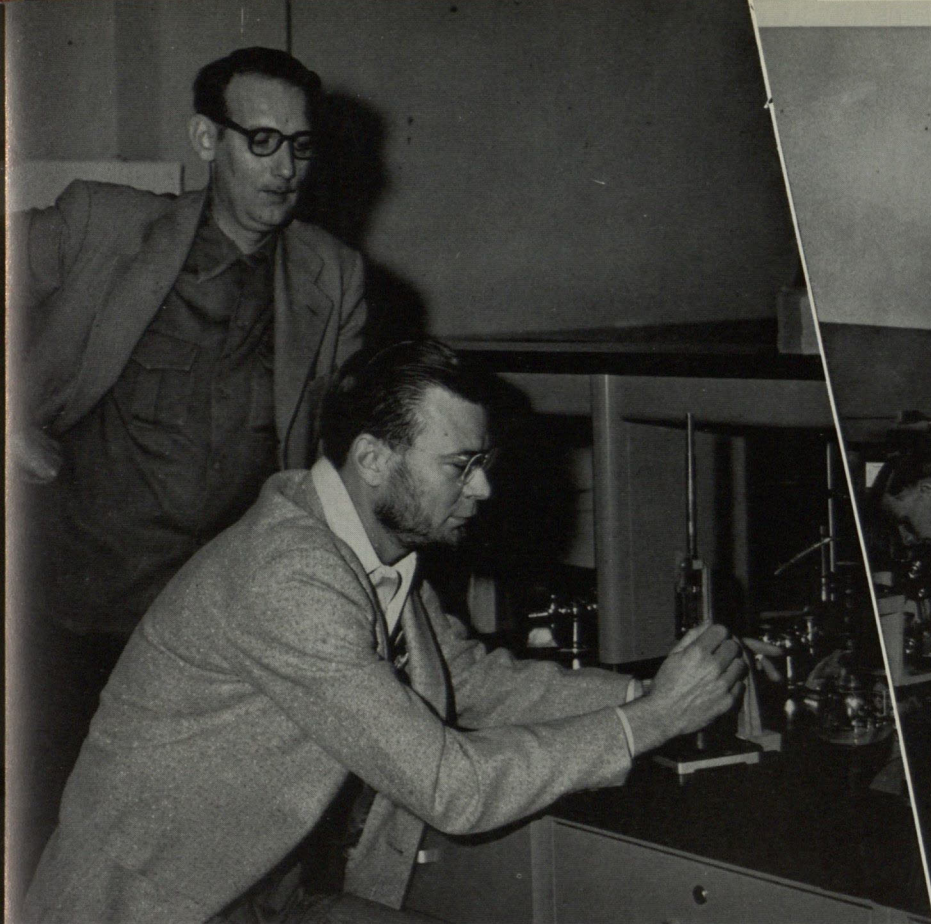
Row 1: S. Morrison, R. H. Maier, J. Scales, C. G. Evensen, P. G. Gray, W. Grant, B. Hirsch.
 Row 2: R. Callaway, N. Jeter, J. Thompson, B. Hamric, W. Hunter, H. Holland, O. Batchelor, S. Jorgenson.
 Row 3: J. Mussey, L. Poage, J. Tillerson, A. Benedict, J. Price, L. Buescher, R. Wershaw, R. Sense.
 Missing: J. T. Sample, Jr.

SOCIETY OF EXPLORATION GEOPHYSICISTS

The Trans Pecos Student Section, Society of Exploration Geophysicists was founded on the campus of Texas Western on March 25, 1955. The object of the Student Section is to stimulate interest in the science of geophysics and other sciences related to the geology of petroleum and petroleum exploration.

Officers: Mr. C. G. Evensen, Sponsor; J. Scales, President; P. G. Gray, 1st Vice-President; W. Grant, Treasurer; B. Hirsch, 2nd Vice-President.
 Missing: J. T. Sample, Jr., Council Chairman and Secretary.





Civil Engineering—Boyd Anderson working with a Vicat cement testing apparatus. Mr. Billings is supervising.



Metallurgy—Wally Roser examining a metal specimen, while Tom Wardlaw polishes one in a metallography lab.

ENGINEERING LABS

Electrical Engineering—Gathered around a synchronous motor in the AC machinery lab are H. Martinez, M. Gomez, H. Gschwind, E. Olive, P. Ramirez, and L. E. Owen.



Geology—Looking over a few index fossils for review are Gary Hall, Mr. Evensen, Dick Sense, Joe Roberts, and Pete Gray.

