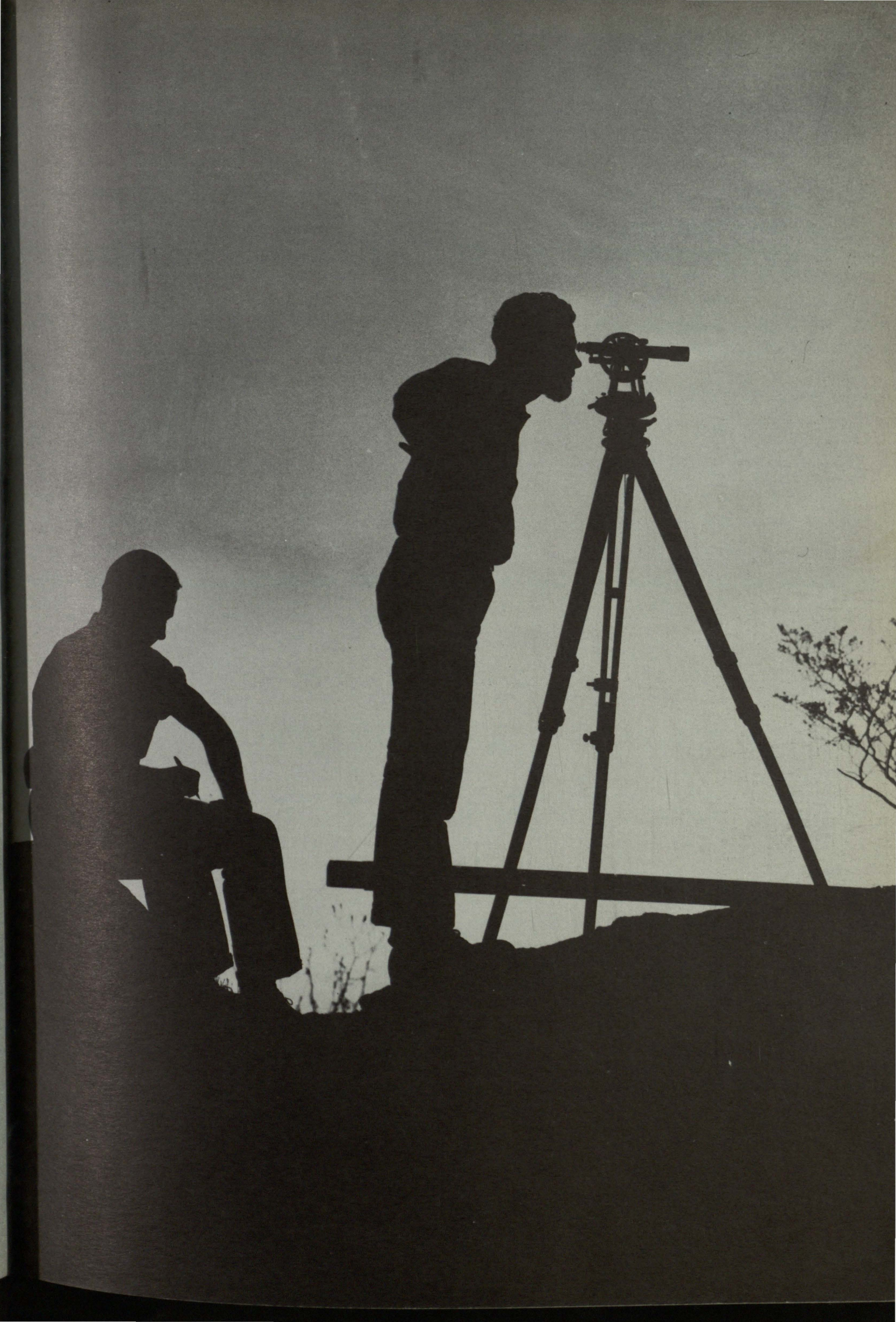


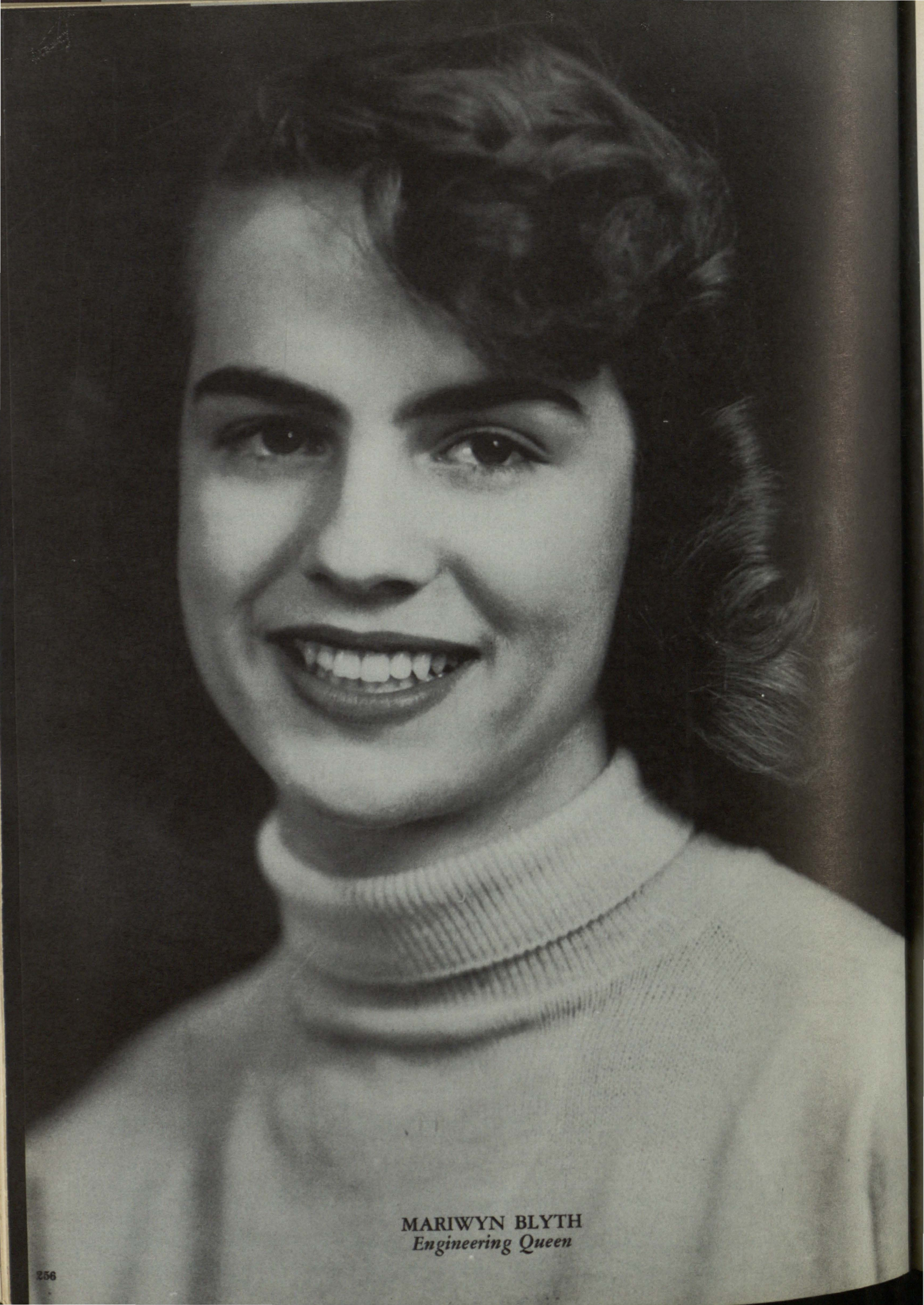
# E N G I N E E R S

When Texas Western was first founded, the school was devoted entirely to engineering students. The painting of the "M" on Mt. Franklin, the old symbol of the College of Mines, and the St. Patrick's Day celebration are traditional College of Mines days. Though Texas Western is largely composed of "academics" now, it is still in spirit, as far as the engineers are concerned, the College of Mines.









MARIWYN BLYTH  
*Engineering Queen*



Dr. Nelson, *sponsor*; Jerry Collison, *president*;  
Tom Patrick, *treasurer*; Joe Klutts, *corresponding secretary*; Burt Spencer, *Vice-Pres.*



## SIGMA GAMMA EPSILON

In 1940 the Alpha Lambda chapter of Sigma Gamma Epsilon, national professional fraternity for students of the earth sciences, was organized at Texas Western. The initiate must have an above average scholastic record and present a technical paper to be eligible for membership. Nineteen students and three instructors are members of Sigma Gamma Epsilon. The fraternity works toward a closer interest in the allied fields of geology, mining, metallurgy, and petroleum engineering.

Row 1: Gilbert Loya, Claudio Martinez, Jerry Collison, Dr. Nelson, Paul Carnahan, Tom Patrick, Maynard Duckworth.

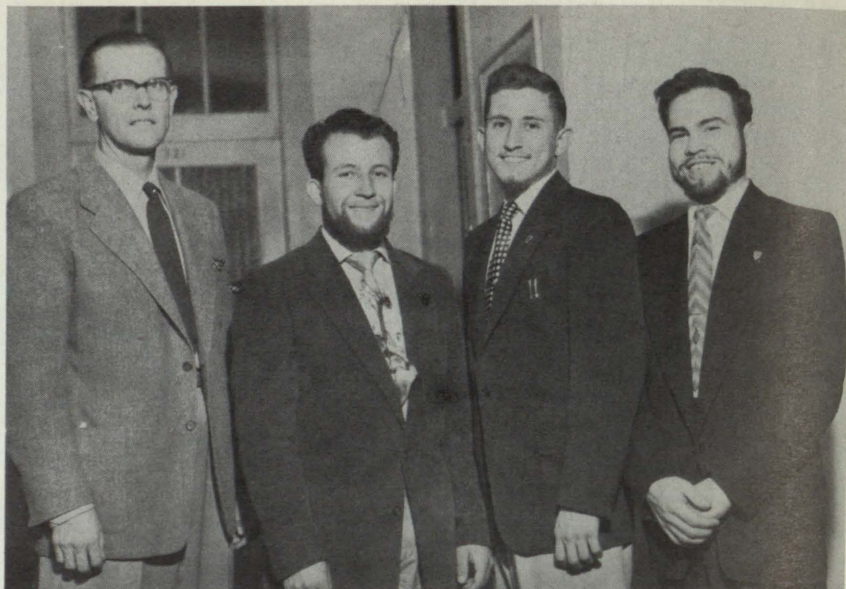
Row 2: Joe Klutts, Ramon Rincon, Burt Spencer, Don Frantzen, Chuck Dalrymple, James Perduyn.





#### OFFICERS

Mr. Guldeman, *Sponsor*; Manuel Loya, *President*; Enrique Bustamante, *Secretary*; Othon Medina, *Treasurer*.



### AMERICAN SOCEITY OF CIVIL ENGINEERS

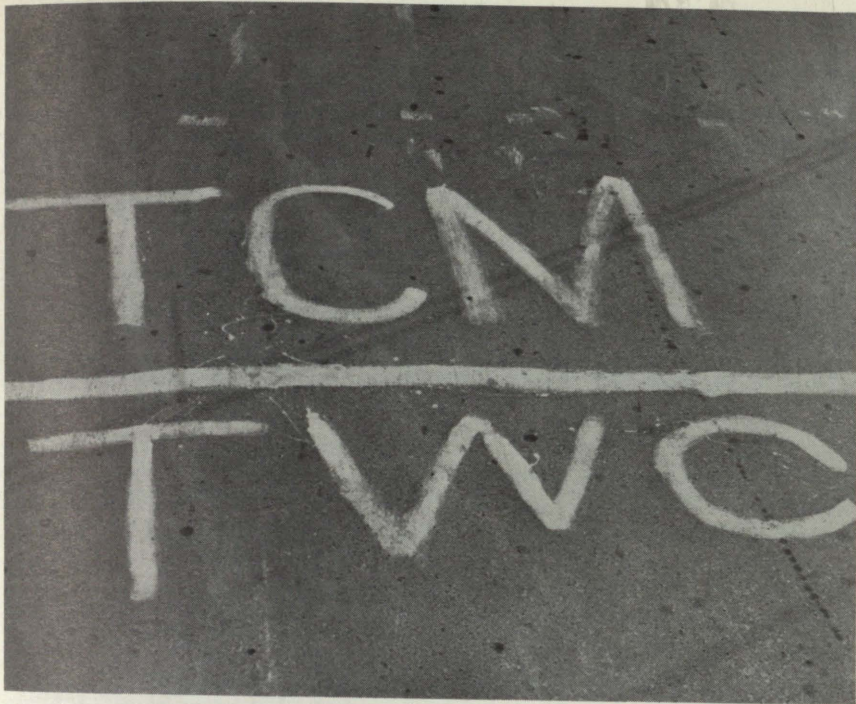
Students majoring in civil engineering who have sophomore standing or above are eligible for membership in the American Society of Civil Engineers. The Texas Western chapter was organized in 1947 to give the civil engineer students a chance to become acquainted, to introduce them to topics of interest in civil engineering, and to foster development of a professional spirit.

#### MEMBERS

Row 1: Mr. Guldemann, Armando Gutierrez, Manuel Moya, Fernando Garcia, Othon Medina, Gilbert Estrada.  
Row 2: Harry Corbett, Charles LeMasters, Jim Maloney, Tom Noah, Sergio Plaza, Fonso Kennard, Lyle Scarborough, Alfonso Martinez, Enrique Bustamante, Alfonso Gallardo, George Kistenmacher.







## THE ENGINEERING DEPARTMENT

*"The Line" which separates the "peedoggies" from the Engineers.*

*Maynard Duckworth receives the reward for the best Engineering decal.*



*Sophomores trying to level the transit.*



## AMERICAN INSTITUTE OF MINING ENGINEERS

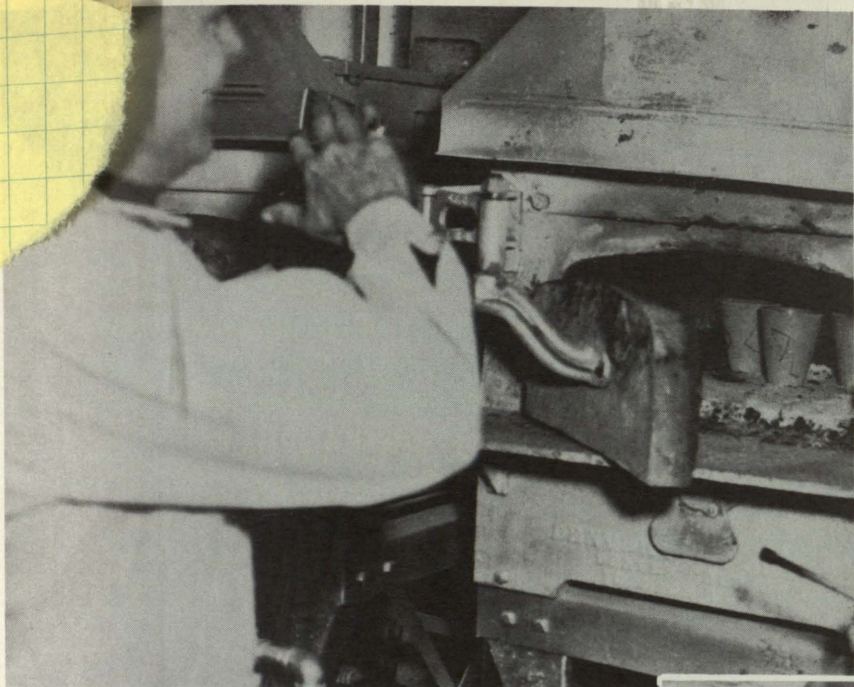
The history of the Texas Western chapter of the American Institute of Mining Engineers goes back to the Scientific Club which was established at the College of Mines in 1915. The organization became a part of A.I.M.E. in 1944. The group stimulates interest in various sciences and promotes fellowship between professional men and students. There are fifty members of the chapter at Texas Western.

### MEMBERS

- Row 1: Maynard Duckworth, Victory Levy, Chuck Dalrymple, Dr. Rintelen, Joe Klutts, Bill Calhoun.  
Row 2: Ed Bravenec, Fred Lofftus, Tom Patrick, John Ferguson, Steve Kosanke, Paul Carnahan, Bob Scott, Henry Flynn, Gilbert Loya.  
Row 3: Ramon Rincon, Herb Holland, Robert Little, Lacy Pittman, Gilbert Rodriguez, Dave Webb, Ed Patrick.



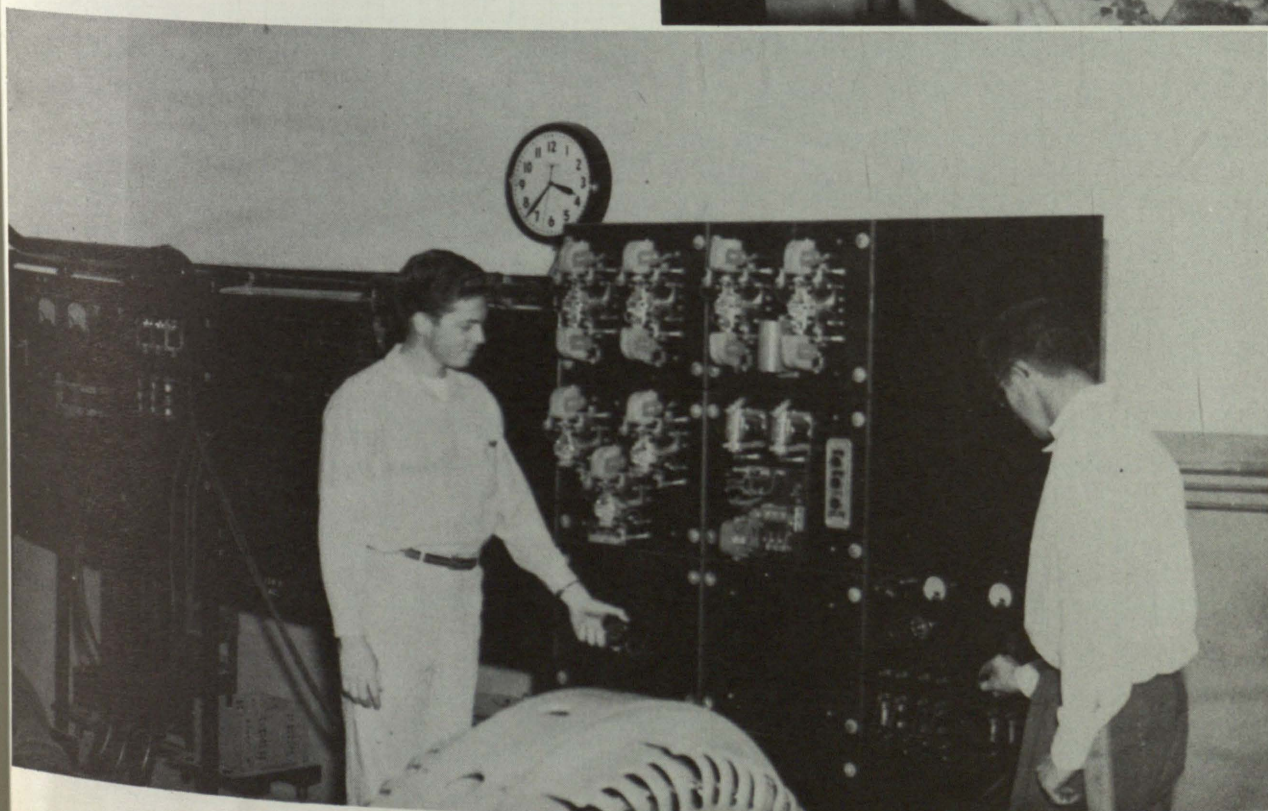
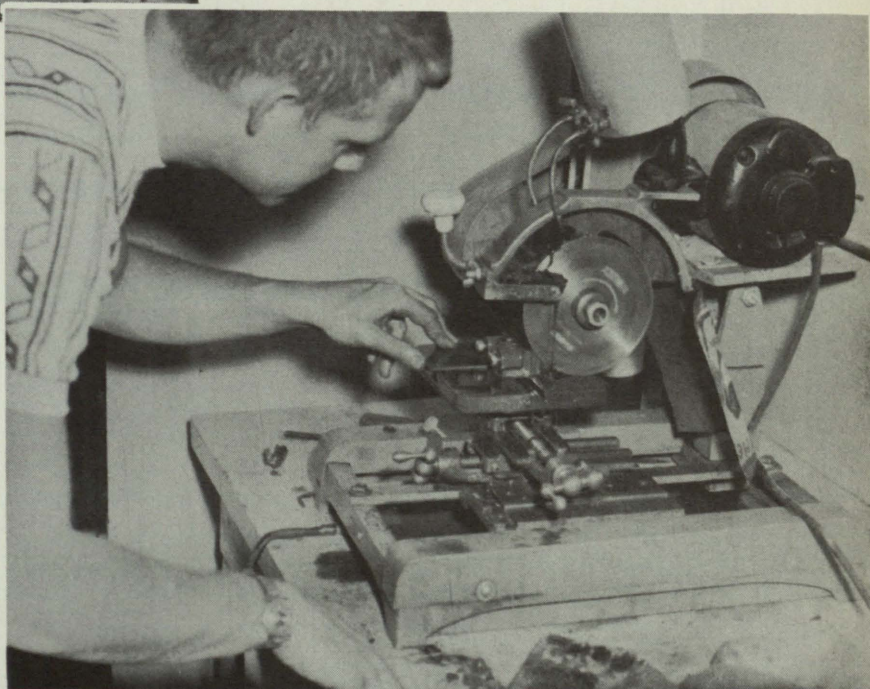




## MINING AND ELECTRICAL LABS

*Fire-assaying lab making "cup-cakes" for the A.I.M.E. meeting.*

*Cutting a specimen in slag-lab.*



*"Juice jockies" in Electrical Lab.*





FLOYD A. DECKER, *Sponsor*; DANNY VICKERS, *Chairman*; BOB SNARE, *Treasurer*, JACK WILLIAMS, *Vice-chairman*.

## AMERICAN INSTITUTE OF ELECTRICAL ENGINEERS

Texas Western's branch of the American Institute of Electrical Engineers was organized in 1948 with Mr. Floyd Decker, professor and chairman of the department of electrical engineering, as counselor. The aims of the chapter are the advancement of theory and practice of electrical engineering together with allied arts and sciences, development of individual engineers and participation in inspection trips to places of engineering interest. The group participates in such social activities as "M" Day, St. Pat's Day, and the Hard Luck Dance.

Row 1: Ralph Green, Allan Willard, Jack Williams, Danny Vickers, John Baird.

Row 2: F. A. Decker, Jim Sullivan, James Everett, Clyde Dunn, J. Mack Adams, Harold Pollard, Robert Snare, Reymundo Sambrano, Herman Black, Richard Bender, Robert Velarde.





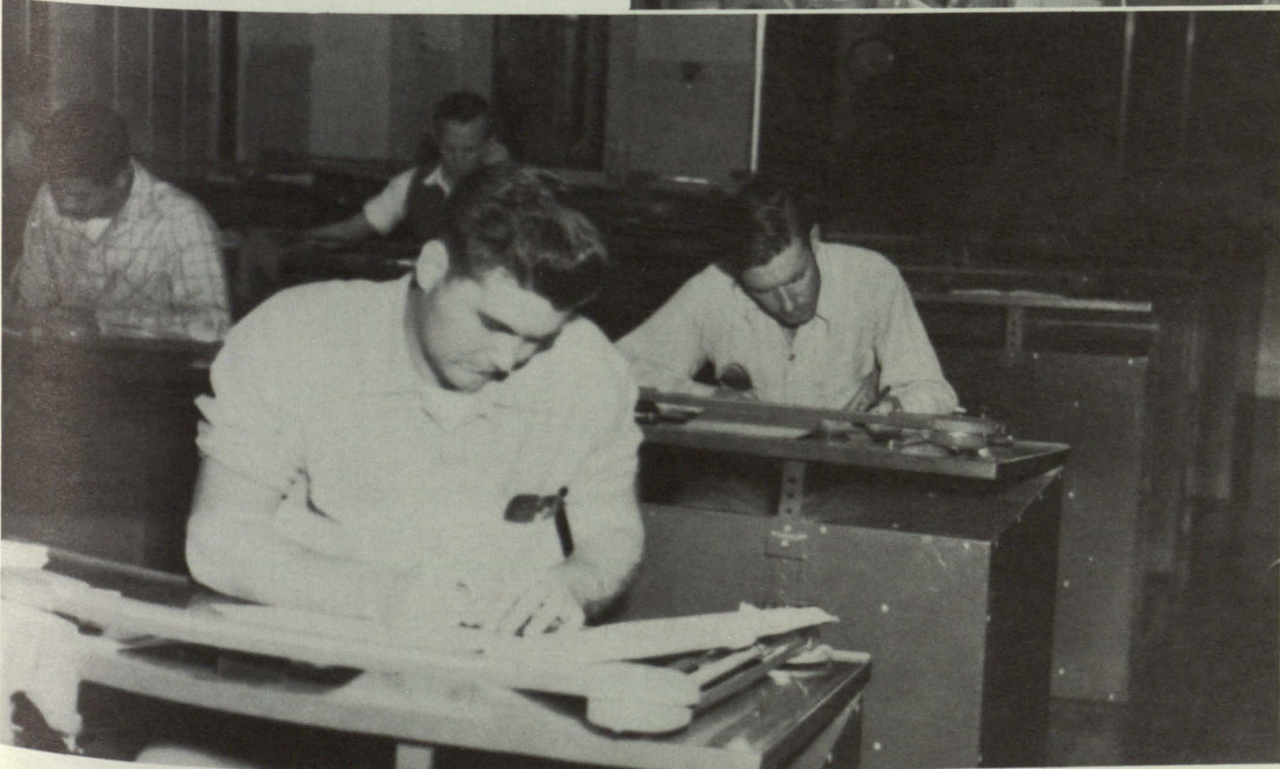
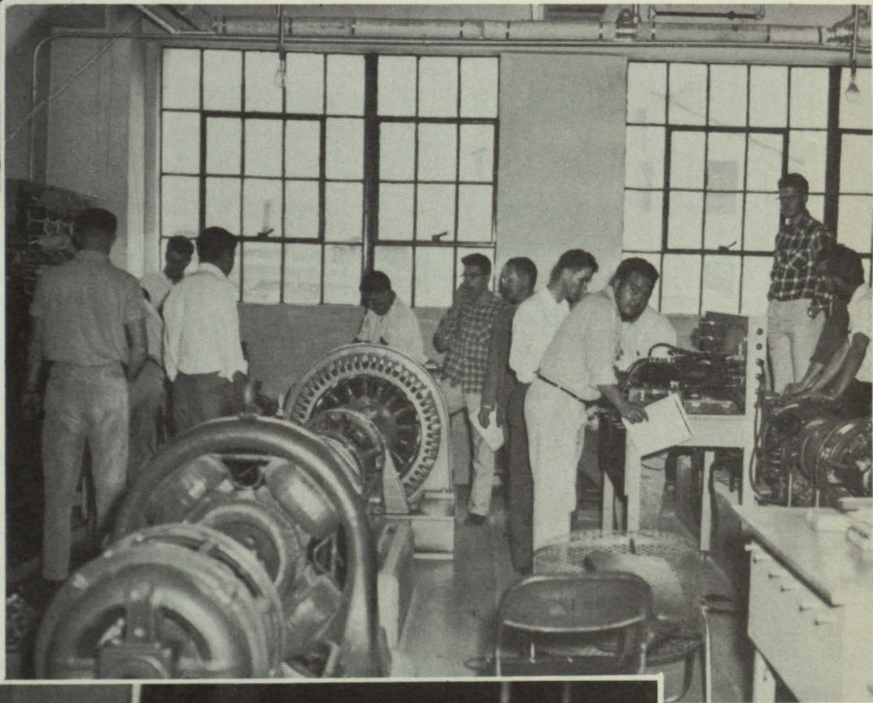


ELECTRICAL ENGINEERING LAB.

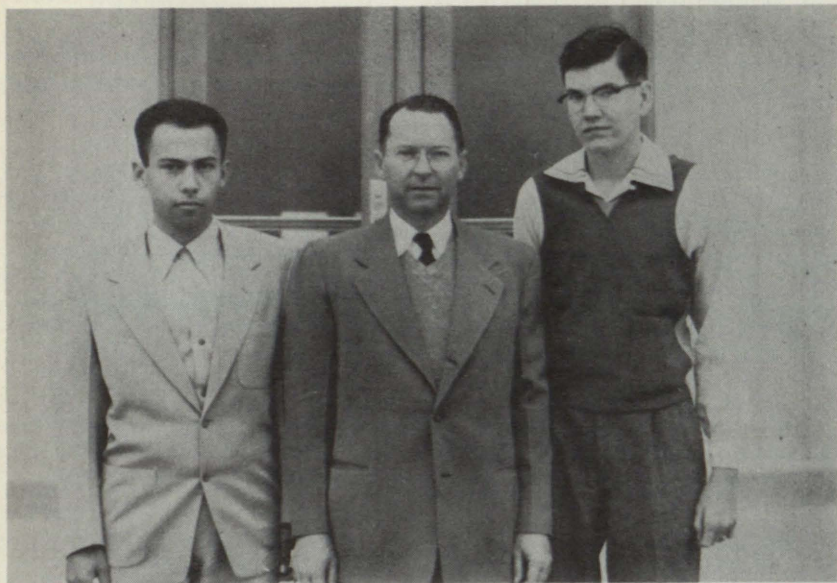
*Wha' Hoppin'*

*Who's got last years' report?*

*There's no place else to put this line but here.*







#### OFFICERS

Saul Gonzalez, *President*; Dr. J. A. Hancock, *Sponsor*; Allan Moore, *Treasurer*.

## AMERICAN CHEMICAL SOCIETY

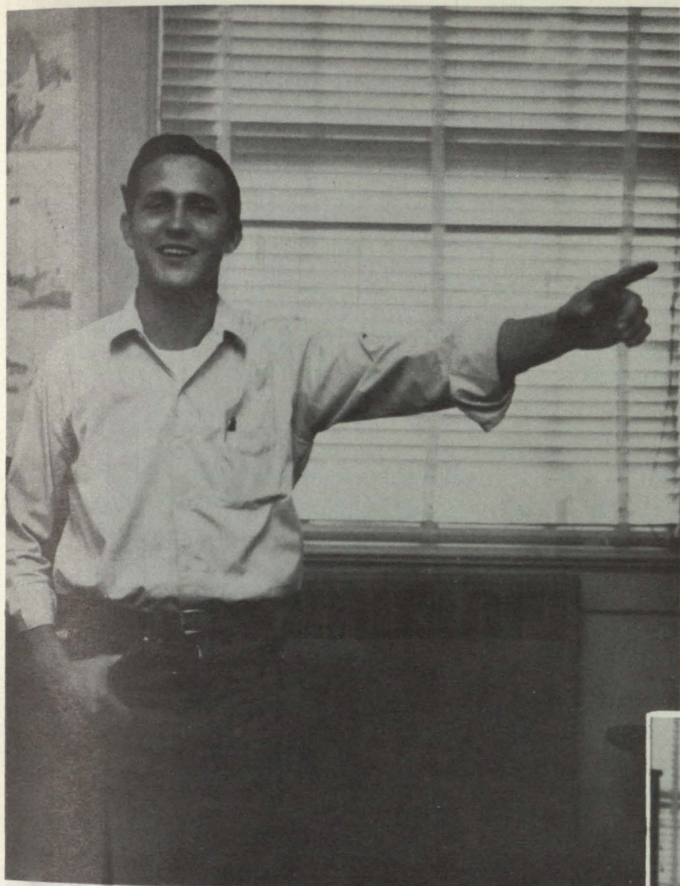
The Texas Western Chapter of student affiliates of the American Chemical Society was founded in October, 1949. The aim of the chapter is to afford an opportunity for the students of chemistry and chemical engineering to become better acquainted, to secure the intellectual stimulation that arises from professional association, to secure experience in preparing and presenting technical material before audiences, to foster a professional spirit among the members. The activities of the society include lectures, movies, field trips and an annual picnic.

#### MEMBERS

Row 1: Saul Gonzalez, Ellis Melton, Cecelia Sada, Bill Herndon, Dr. W. W. Lake.  
Row 2: Dr. J. A. Hancock, Joseph Luckett, Allan Moore, Hoyt Fellers, Dardis Hood.



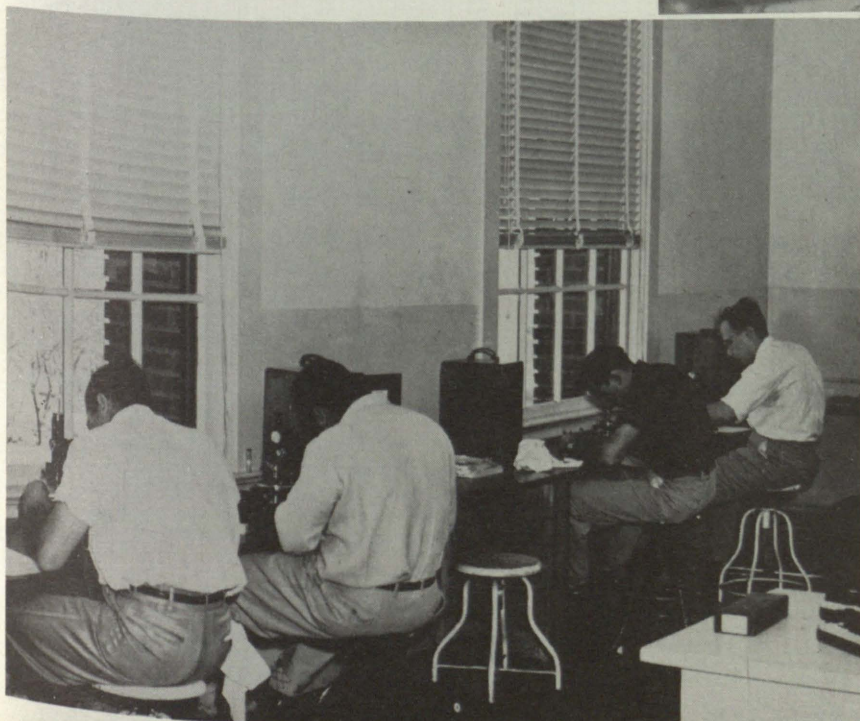




## GEOLOGY LAB

*Carroll Staton instructs his "young pupils"*

*It's Greek to me but here goes*



*Lab for the blind*





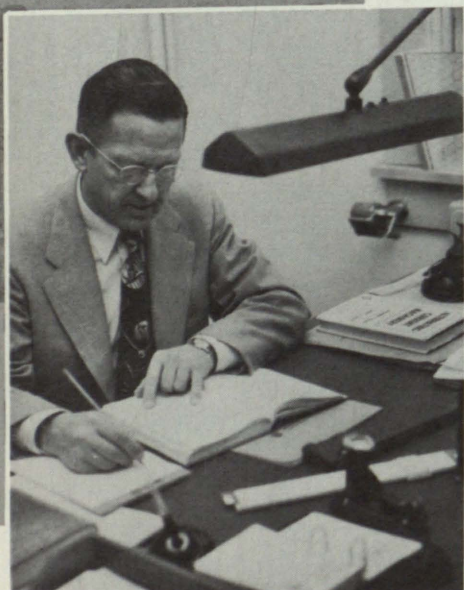
EUGENE M. THOMAS, M. S.  
*Dean of Mines and Engineering*



HOWARD EDMUND QUINN, PH. D.  
*Professor of Geology*



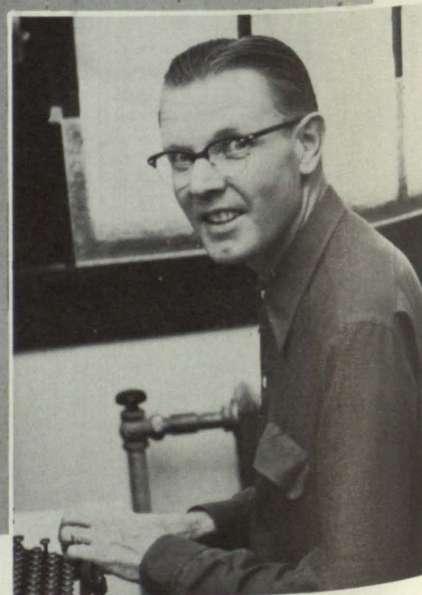
LLOYD A. NELSON, PH. D.  
*Professor of Geology*



FLOYD ARCHIE DECKER, M.S.E.  
*Professor of Electrical Engineering*



JOHN R. BALLANTINE, M.S.  
*Associate Professor of  
Mechanical Engineering*



EUGENE J. GULDEMAN, M. S.  
*Associate Professor of  
Civil Engineering*



# ENGINEERING FACULTY



WILLIAM S. STRAIN, M. S.  
*Associate Professor of Geology*



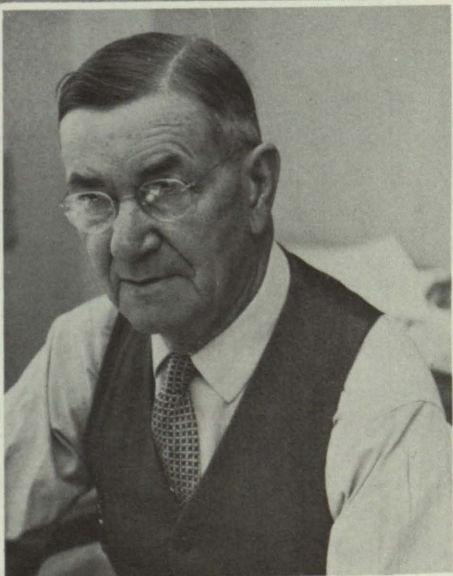
JOSEPH CHARLES RINTELEN, JR., PH. D.  
*Associate Professor of Metallurgy*



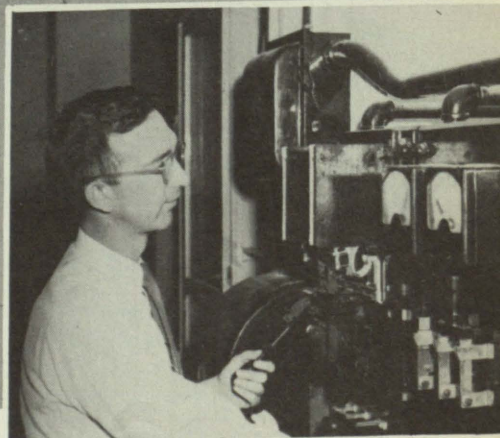
GUY ERNEST INGERSOLL, E. M.  
*Associate Professor of  
Mining and Metallurgy*



PAUL CLIFTON HASSLER, JR., B. S.  
*Instructor in Civil Engineering*



JOHN FRASER GRAHAM, E. M.  
*Professor of Mining and Metallurgy*

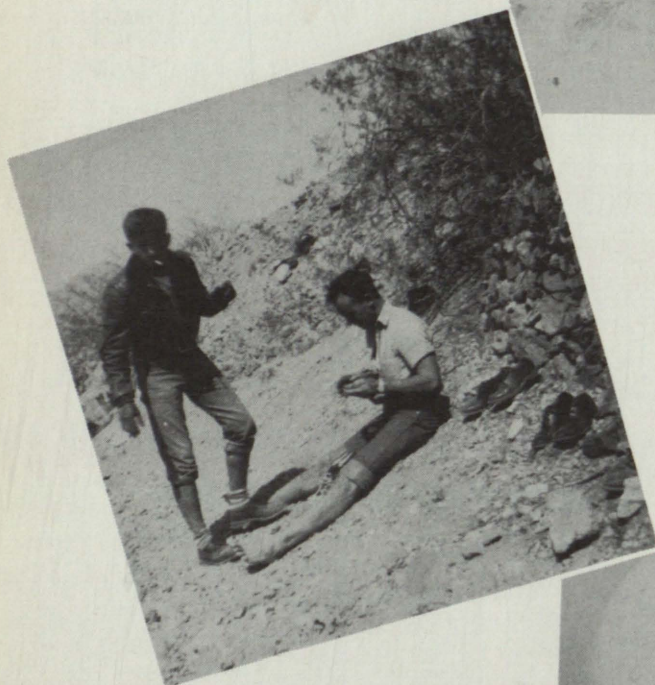


WILLIAM W. RAYMOND, M. S.  
*Associate Professor of Engineering*

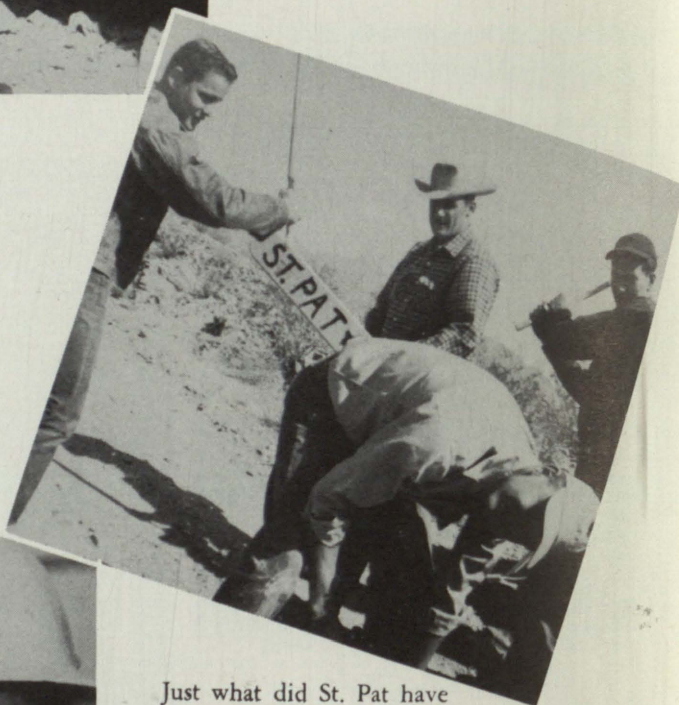




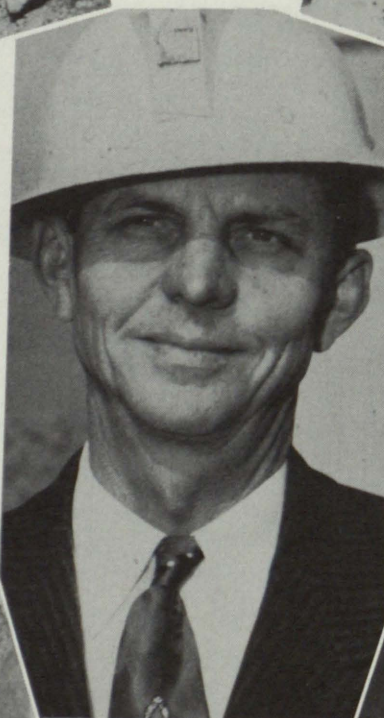
He has had it.



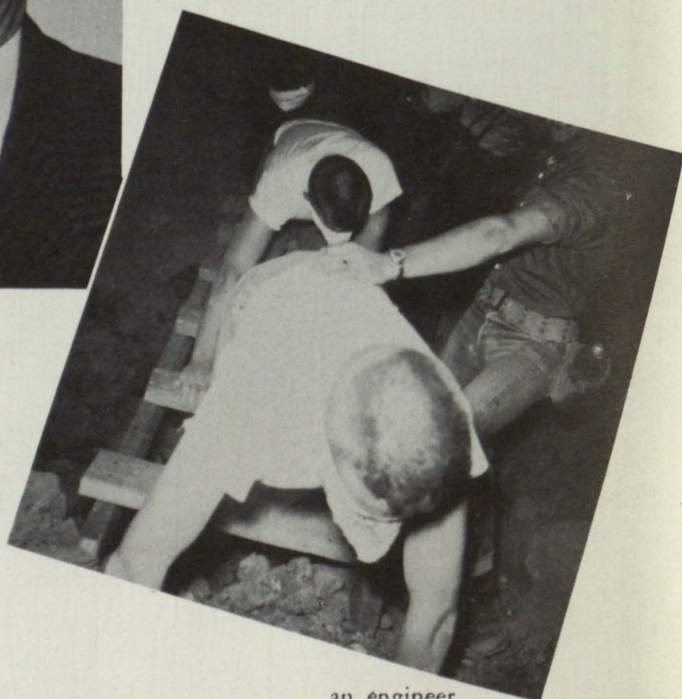
A pause that we hoped refreshed.



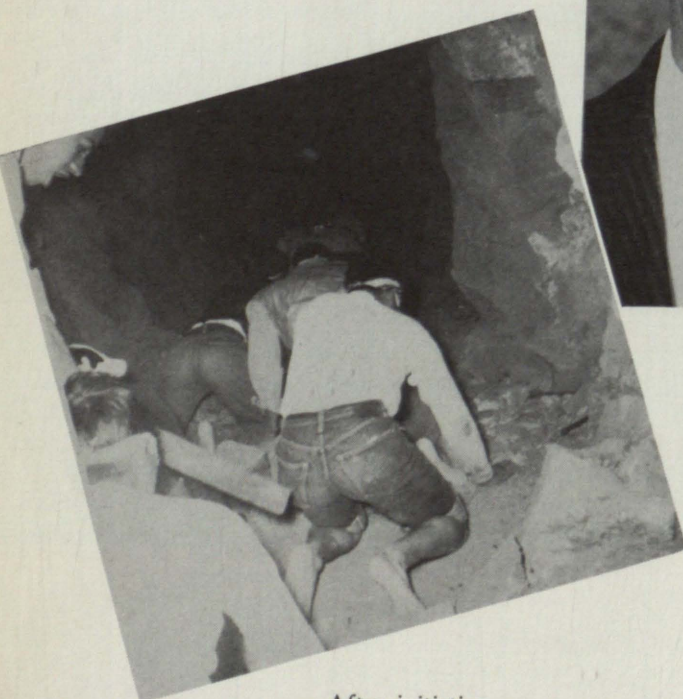
Just what did St. Pat have to do with this?



Dean Thomas



an engineer.

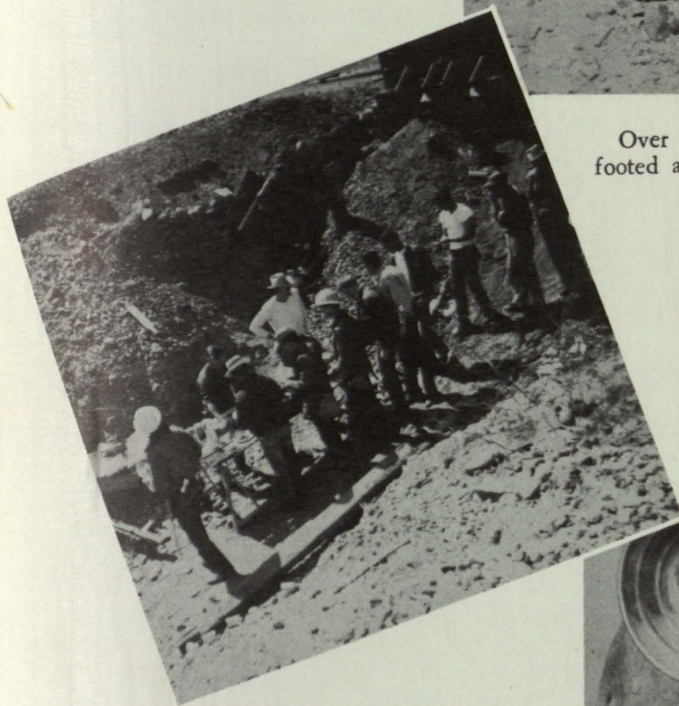


After initiation . . . .

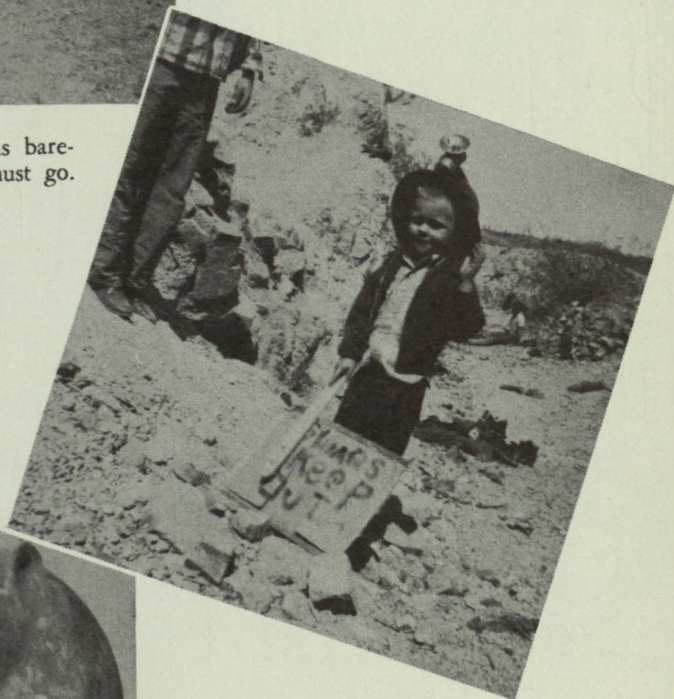




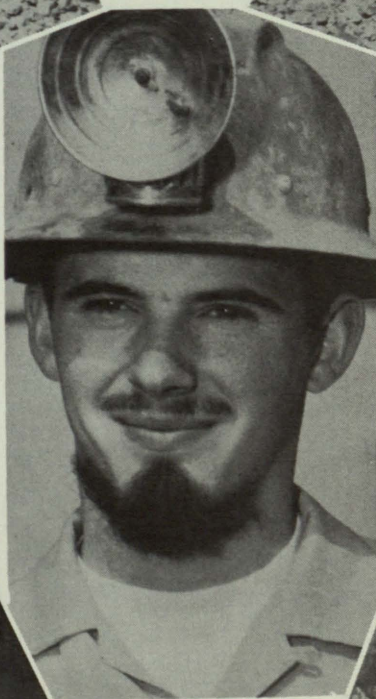
Over the mountains bare-footed an engineer must go.



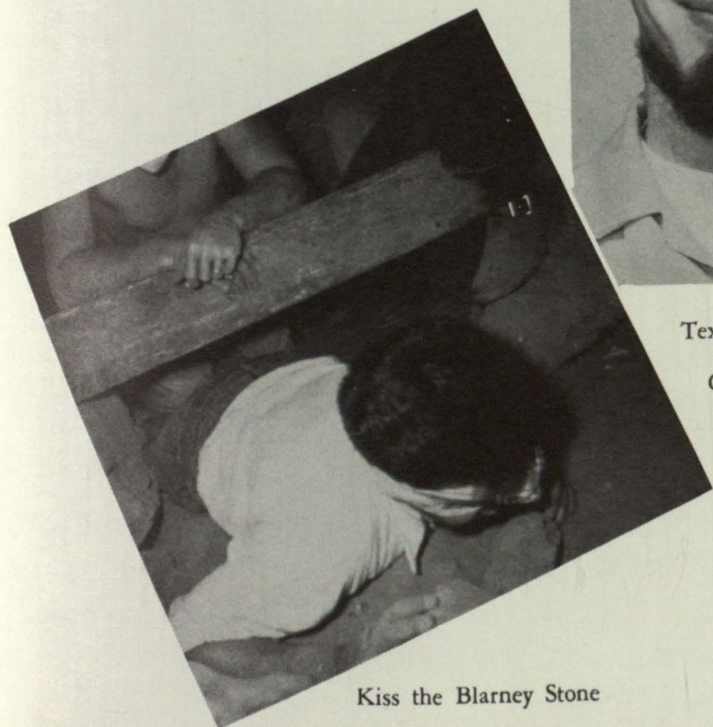
Chow time.



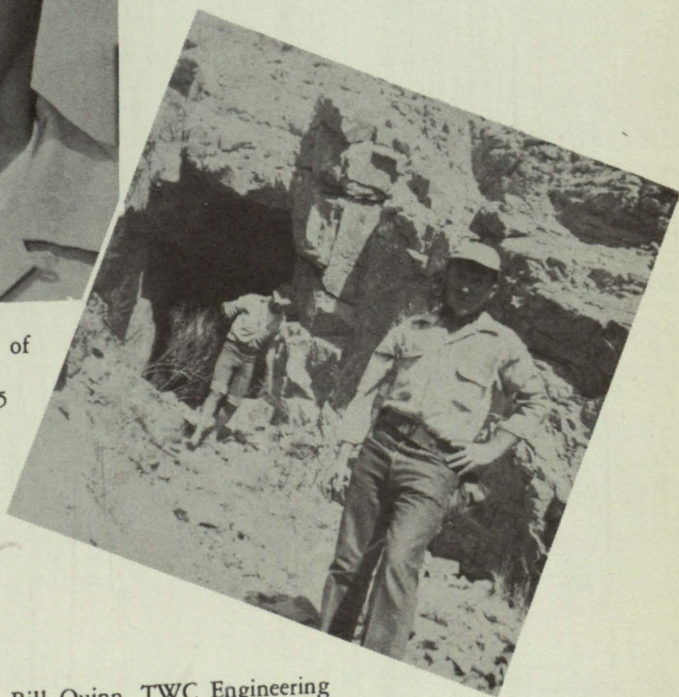
Texas College of Mines,  
Class of '73



Texas College of  
Mines,  
Class of '55



Kiss the Blarney Stone



Bill Quinn, TWC Engineering  
student.