

**Ex-Students
Select Ten
Outstanding**

**Snow Fiesta Queen
Elections Scheduled
For Wednesday**

**Texas Sponsors
Beauty Contest**



**Eddie Fisher Judges
Flowsheet Contest**

**SA Buys
Queen's
Crown**

LIMELITE

A NOTE FROM

Eddie Fisher

February 3, 1955

Dear Mr. Williams,

Making the selection for the Flowsheet was a pleasant but difficult assignment. All the girls are so pretty that each entry deserved to win.

After much pondering we selected these five girls, fourteen, twenty-three, thirteen, sixty-six, four in that order. We made the selection of these five above the others only because we had to designate five.

Congratulations to everybody and thanks, again, for a very enjoyable job.

Sincerely,

Eddie Fisher
Eddie Fisher

ef/j





COLLETTE CLINE
Flowsheet Queen



LU PATTON
Flowsheet Honoree



DOROTHY SCOTT
Flowsheet Honoree

CAROL GRIMMER
Flowsheet Honoree



SHIRLEEN SHARPLEY
Flowsheet Honoree



JANIE BELL
Four Year Outstanding Student



BOB CAVE
Four Year Outstanding Student



JANIE BELL
All TWC Favorite



PAT SKIPWORTH HILTON
Miss TWC



SHIRLEY BAKER
TWC Sun Princess



NANCY SAUNDERS
1955 Sun Carnival Queen



HELENE JOHNSON
Sun Carnival Duchess



MARIAN VAN KIRK
Sun Carnival Duchess



JERRY ALLEN
Sun Carnival Duchess



CAROLYN GUMPER
Sun Carnival Princess



BETTY JONES SAUNDERS
Most Beautiful Girl



BOBBA HADLOCK
Beauty Runner-Up



MARIAN VAN KIRK
Beauty Runner-Up

CAROL GRIMMER
Beauty Runner-Up



JOY DEE HATCHETT
Beauty Runner-Up



MARGARET FINERTY
Snow Fiesta Queen



DON THORNE
Co-Ed King



JANE VAN KIRK
Summer Queen



BOBBA HADLOCK
Posture Queen



KAY HORNADAY
Miss Gold Digger



PAT BENSON
Mr. Miner

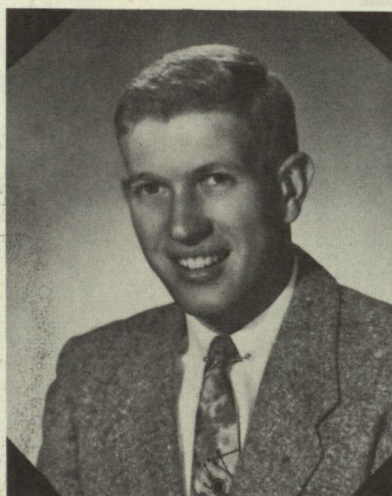


JANET SMITH
Band Sweetheart

WHO'S WHO IN AMERICAN COLLEGES AND UNIVERSITIES



JANE BELL



RICHARD BENDER



BETTY BYNUM



PAT CARPENTER



FAYE CORMIER



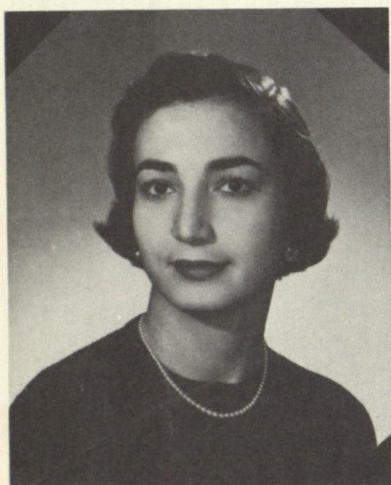
SUE GRAIG



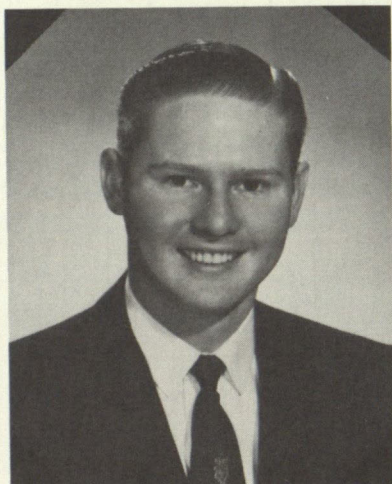
JACKIE CRYSLER

WHO'S WHO

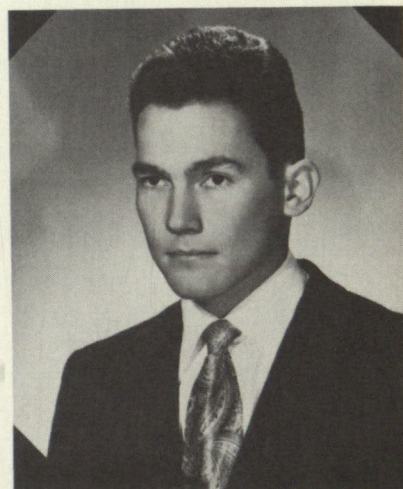
IN AMERICAN COLLEGES AND UNIVERSITIES



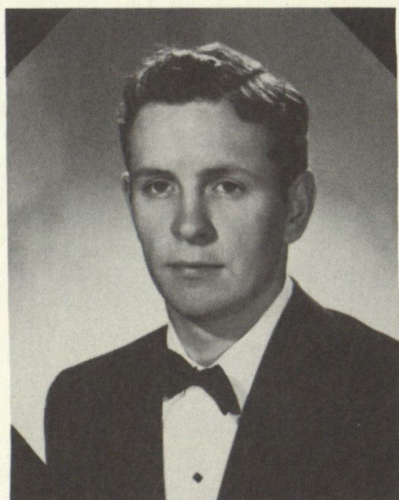
MARIE ESMÁN



BOB FLORENCE



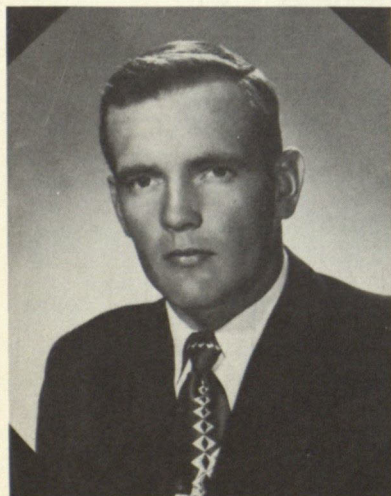
DAN FRANTZEN



GALE GROSE



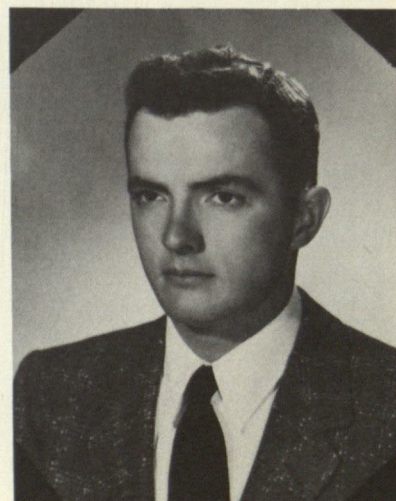
CHESTER HARDY



WADE HEDGECOKE



CAROLYN HEMBREY



DAN HOVIOUS

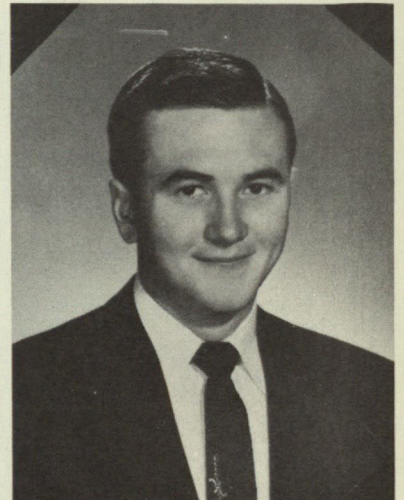
WHO'S WHO IN AMERICAN COLLEGES AND UNIVERSITIES



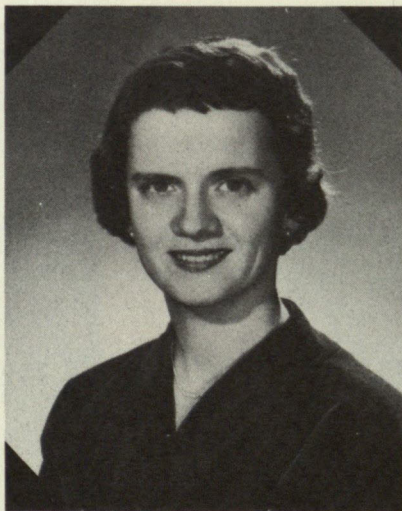
GUINNELL ISAACKS



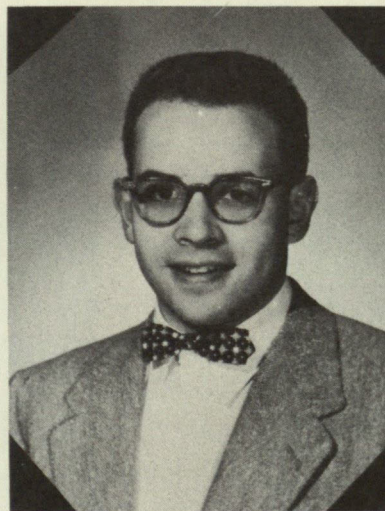
MINA JO KING



JOE KLUTTS



TITA McNUTT



GEORGE MAYNES



BEVERLY PACK



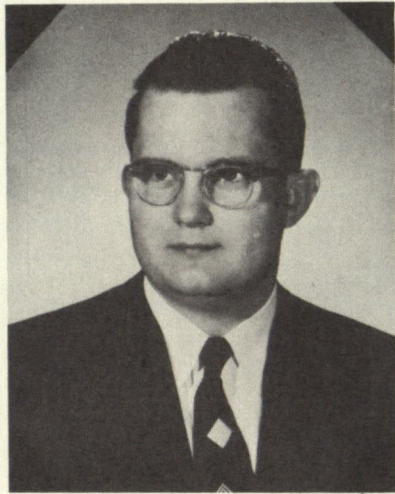
DANICE ROYER



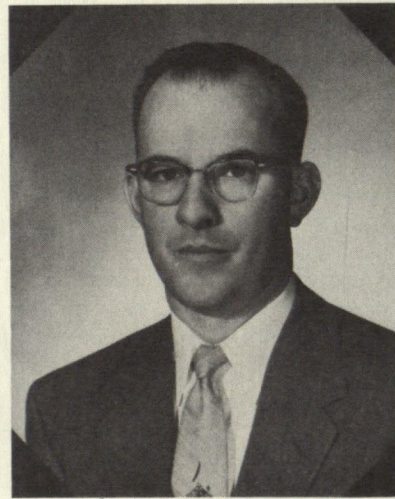
ROBERT SAUCEDO

WHO'S WHO

IN AMERICAN COLLEGES AND UNIVERSITIES



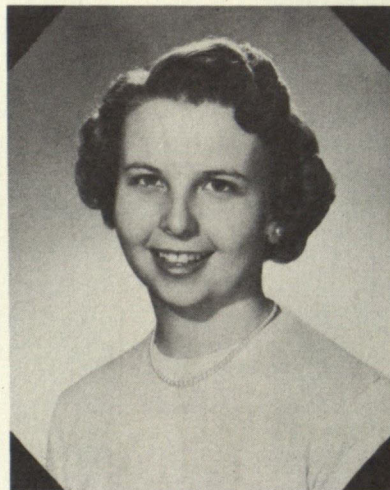
WILLIS SEYFFERT



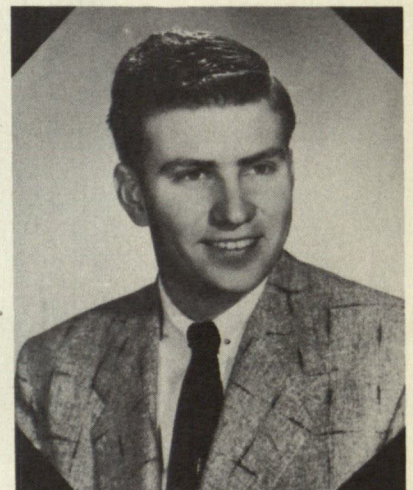
CHARLES SIMPSON



JANET SMITH



KATHY STONE



DON THORNE

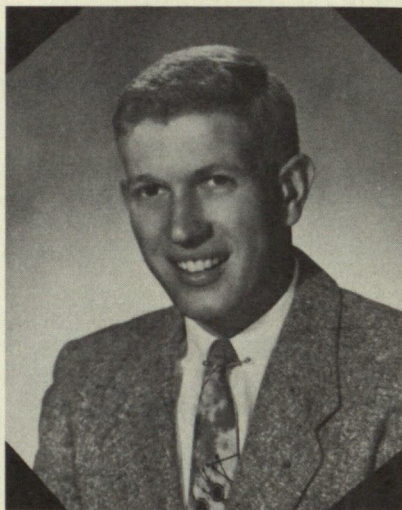


ROBERT VELARDE

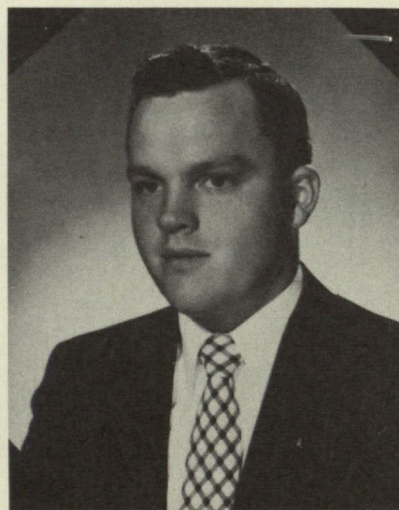


CAROL WAFER

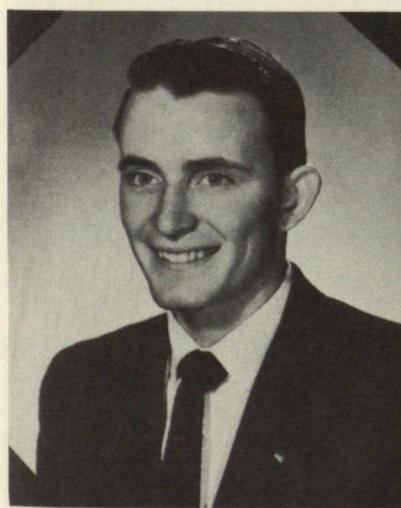
MEN OF MINES



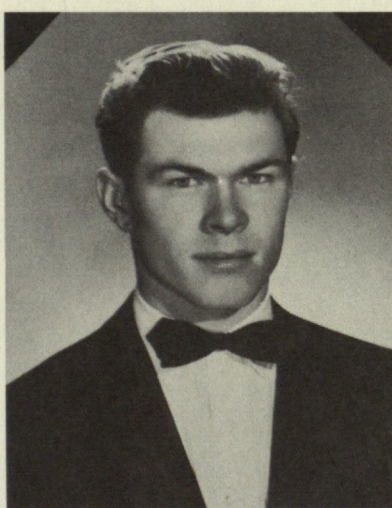
RICHARD BENDER



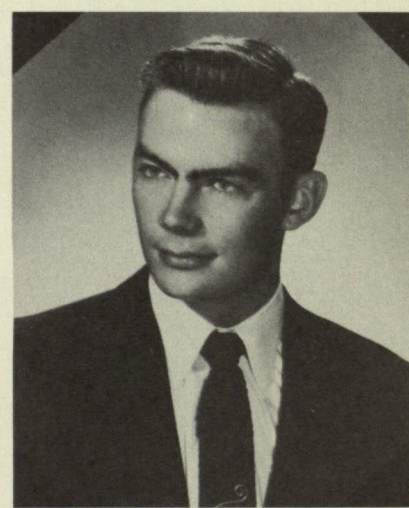
PAT BENSON



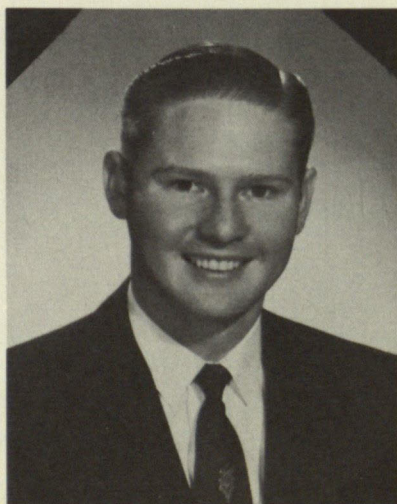
KEN BERGGREN



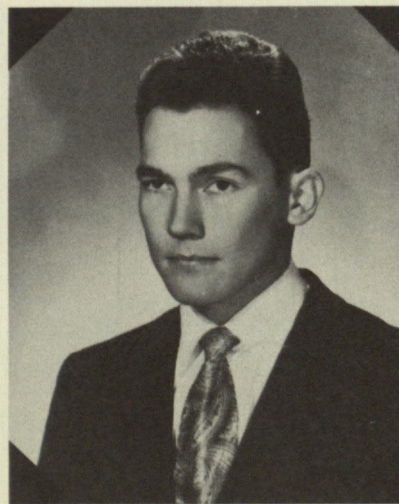
BOB CAVE



SAM DONALDSON

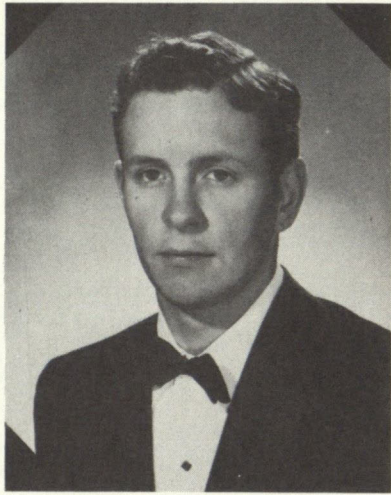


BOB FLORENCE



DAN FRANTZEN

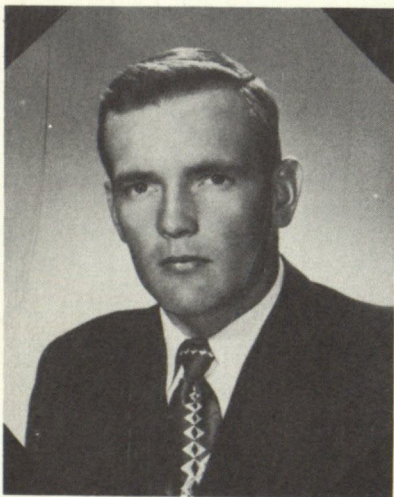
MEN OF MINES



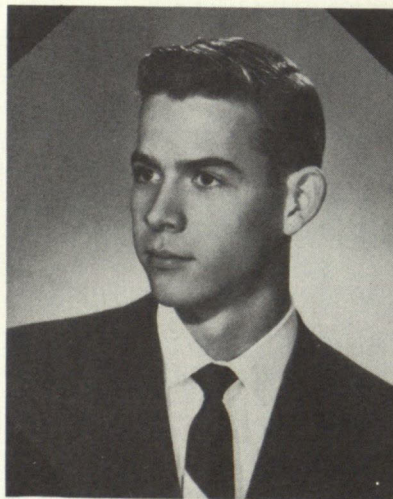
GALE GROSE



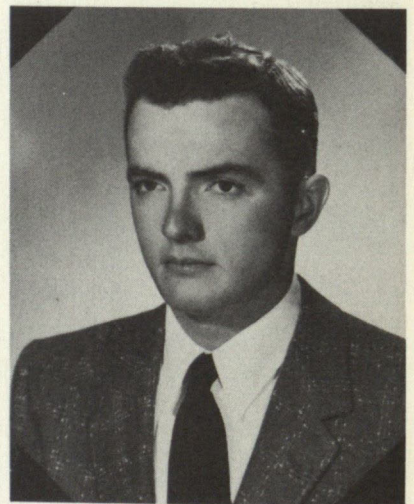
CHESTER HARDY



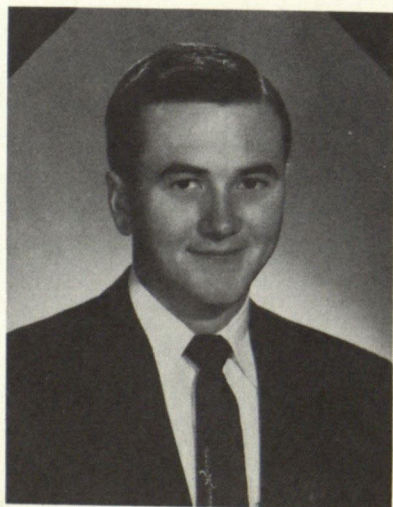
WADE HEDGECOKE



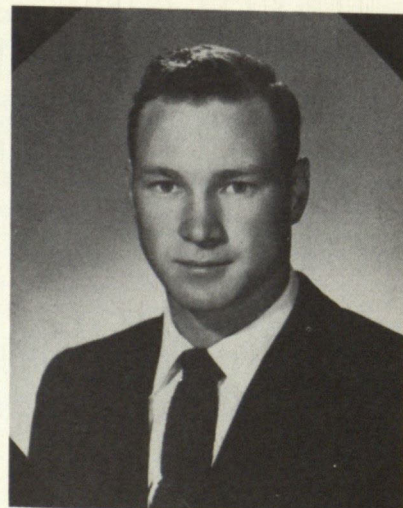
ROY HICKMAN



DAN HOVIOUS

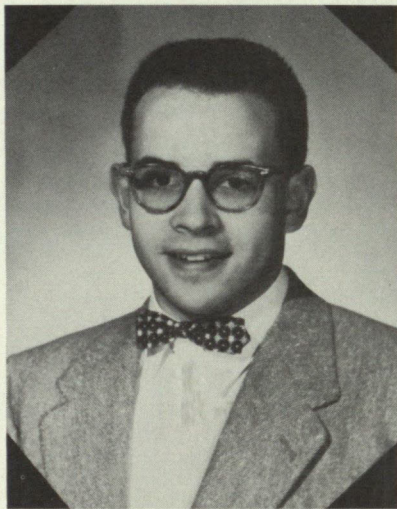


JOE KLUTTS

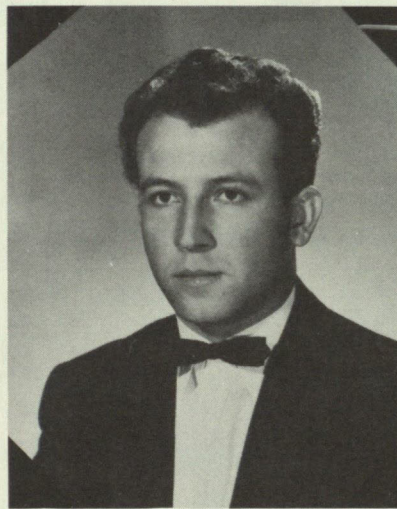


NOEL MCCORMICK

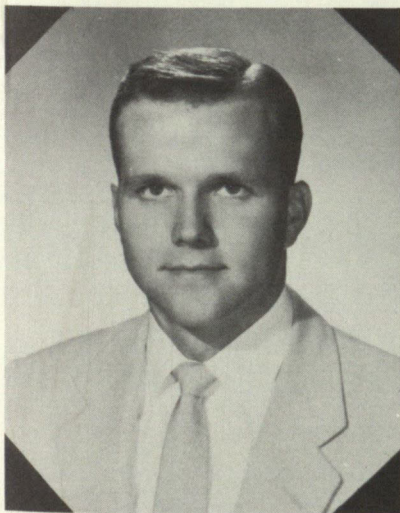
MEN OF MINES



GEORGE MAYNES



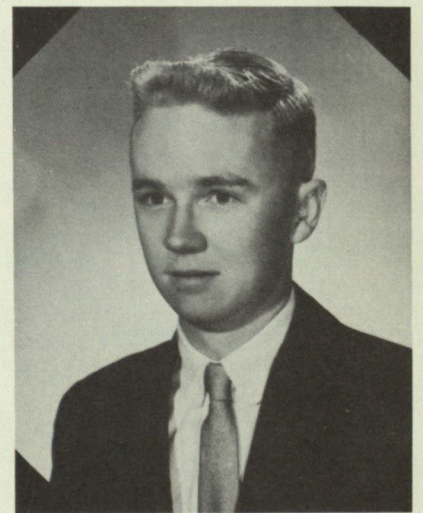
MANUEL MOYA



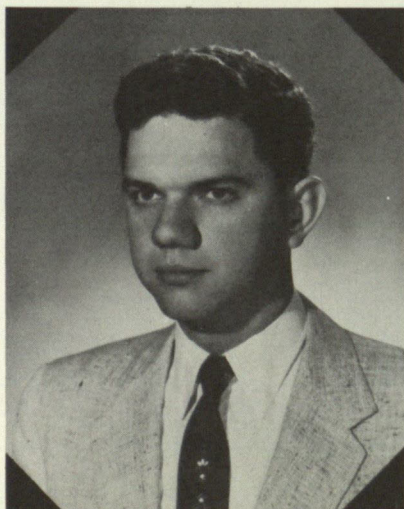
JIM NEUGEBAUER



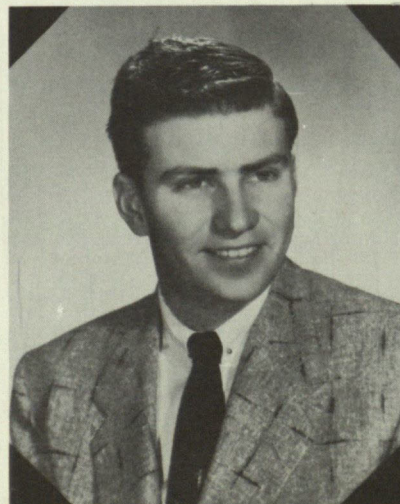
BOB SAUCEDO



ED STROMBERG



JIM SULLIVAN



DON THORNE

