

ENGINEERS





SIGMA GAMMA EPSILON

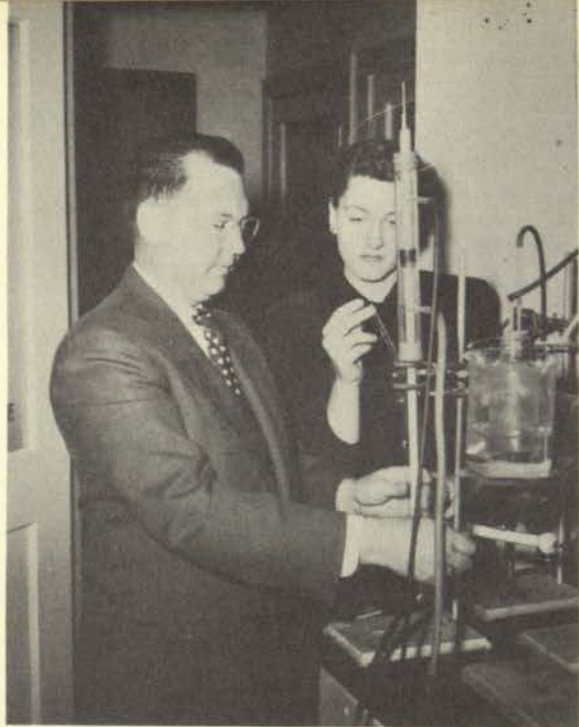
Alpha Lambda chapter of Sigma Gamma Epsilon, national honorary earth sciences fraternity, was installed at Texas Western in 1940. The primary function of the fraternity is to parlay the latest techniques and methods in the earth sciences field. Very little attention is given to social activity. Several highly respected guest speakers address the group during the year.

President THOMAS LINDHOLM, Sponsor, DR. LLOYD NELSON



Front Row: Victor Cooper, Thomas Wilson, Mubeen Abdullah, Dr. Lloyd Nelson, Thomas Lindholm, William Strain, Don Schoenewald, Back Row: Walt Baum, Roy Pope, William Williams, Frank Linville, Claren Hoehne, Walter Hjalmsquist, Carl Norberg, Lee Roy Lunsford, Bob Dickinson, Sam Heinrichs.





AMERICAN CHEMICAL SOCIETY

In the form of a student affiliate chapter, some forty chemistry and chemical engineering students joined the American Chemical Society at Texas Western in September of 1949. Since then their charter has been duly signed and sealed, and the organization has enjoyed a continual growth in membership. The opportunity of hearing re-known speakers in that field, of participating in field trips, and of enjoying a well balanced social program are afforded them. Extended projects are frequently undertaken and carried through to successful completion.

President BETTY DAHLKE, Sponsor DR. J. A. HANCOCK



First Row: Dr. J. A. Hancock, Julieta Grado, Glen Furr, Carmen Guevara, Rodolfo Arciniega, Robert Thompson. Second Row: Lee Morton, Larry Chonoles, Charles Stenbridge, Betty Dahlke, Santiago Guevara, Pratt Greer. Third Row: Leopoldo Rodriguez, Earl Whittington, Phil Chatman Robert McMasters, Sidney Moore.



Sketching with the Sketchmaster



Calibrating a radio frequency oscillator

TEXAS WESTERN ENGINEERS

The need for technically trained men in all functional fields of engineering continues to grow with the many advances now being made. Each year the nation's major mining, petroleum, manufacturing, electric and construction engineering concerns turn to Texas Western for graduates to fill their posts. El Paso ideally located, is a great mining and industrial center of the Southwest, with its large variety of geological formations. One of the largest custom smelters in the world is situated near the college, and within a short distance is also one of the world's largest electrolytic copper refineries.

The college, having geared its engineering department to the need of the individual student, and offering the finest of facilities, consequently produces some of the best trained and best qualified young men entering the field today.



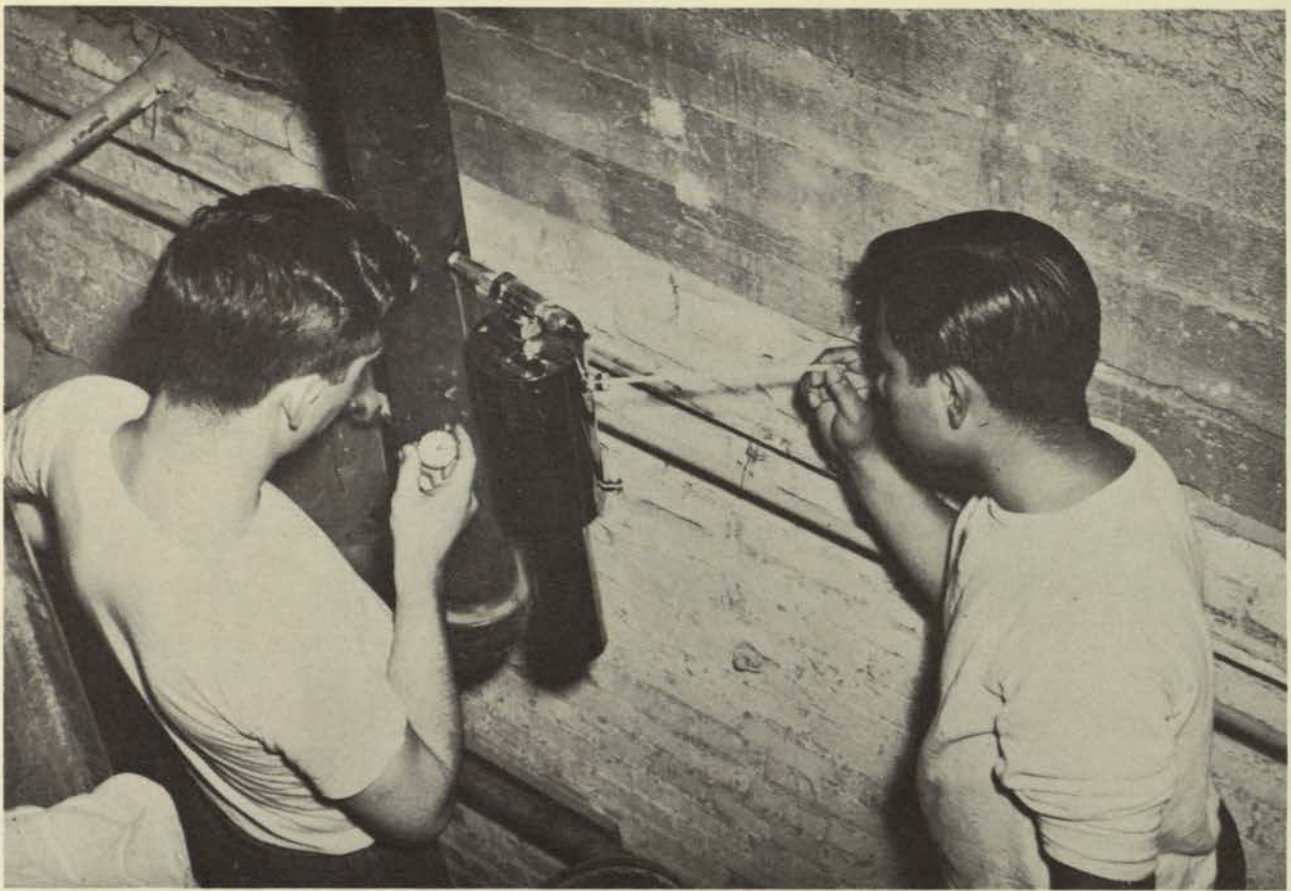
Sponsor FLOYD DECKER, President ARTHUR BRIEDEN

AMERICAN INSTITUTE OF ELECTRICAL ENGINEERS

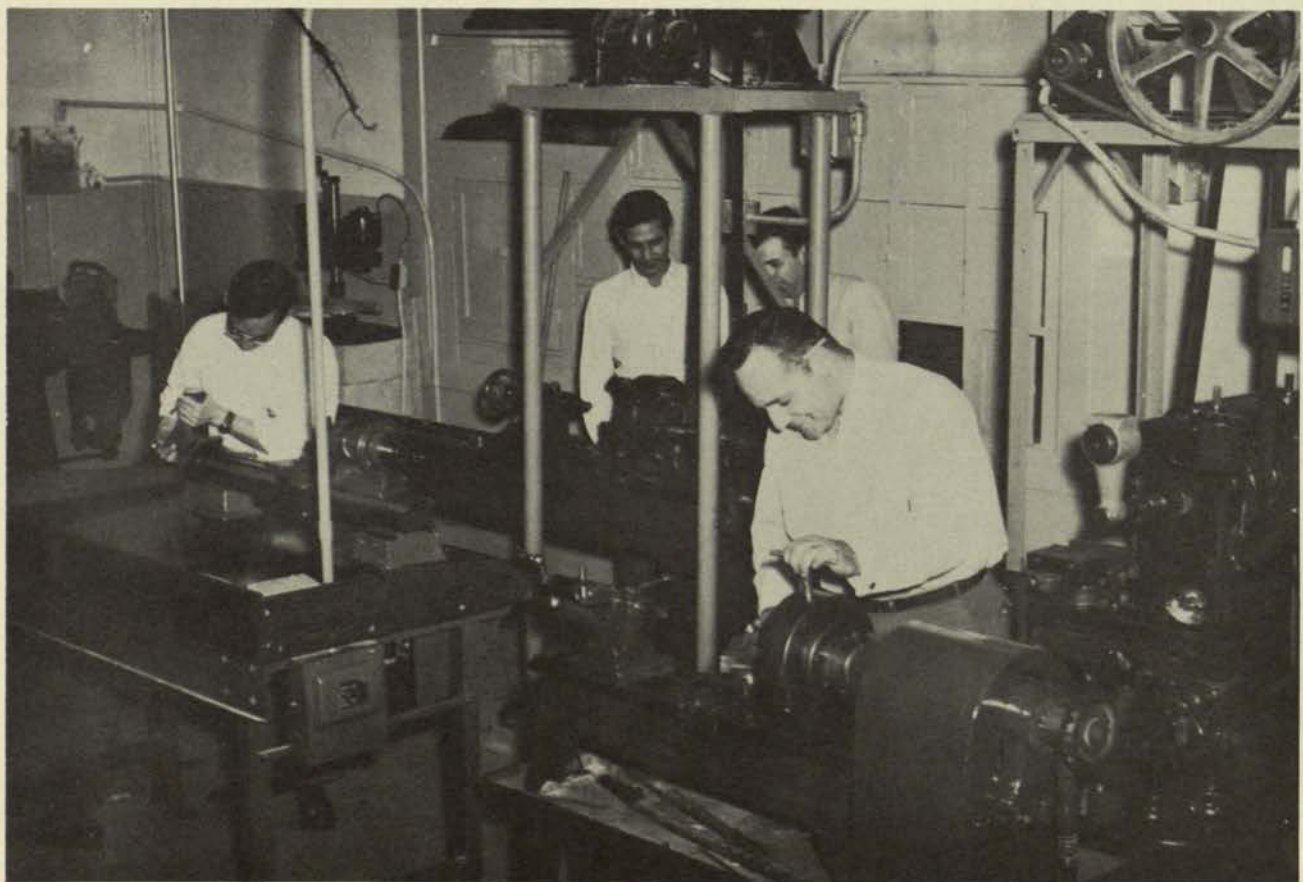
A student chapter of the American Institute of Electrical Engineers was established at Texas Western in May, 1948 under the sponsorship of Floyd A. Decker, professor of engineering. The principal purpose of the local chapter is to function under the auspices of the national organization which is dedicated to aiding the progress and development of students of electrical engineering. This aid is accomplished by affording opportunities for students to carry on activities similar to those of the mother organization. Typical of these is the holding of meetings, presentation and discussion of papers, and participation in inspection trips to sites of interest to engineers.



Front Row: Joe Salazar, Noel Longuemare, Ben Crow, William Reagan, Sebastian Lopez, Floyd Decker. Back Row: Ken Reed, Ed Gonder, Arthur Brieden, Manuel Montenegro, Gus Bigelow, Albert Pena.



Testing boiler steam pressure



Electrical engineering lab



AMERICAN SOCIETY OF CIVIL ENGINEERS

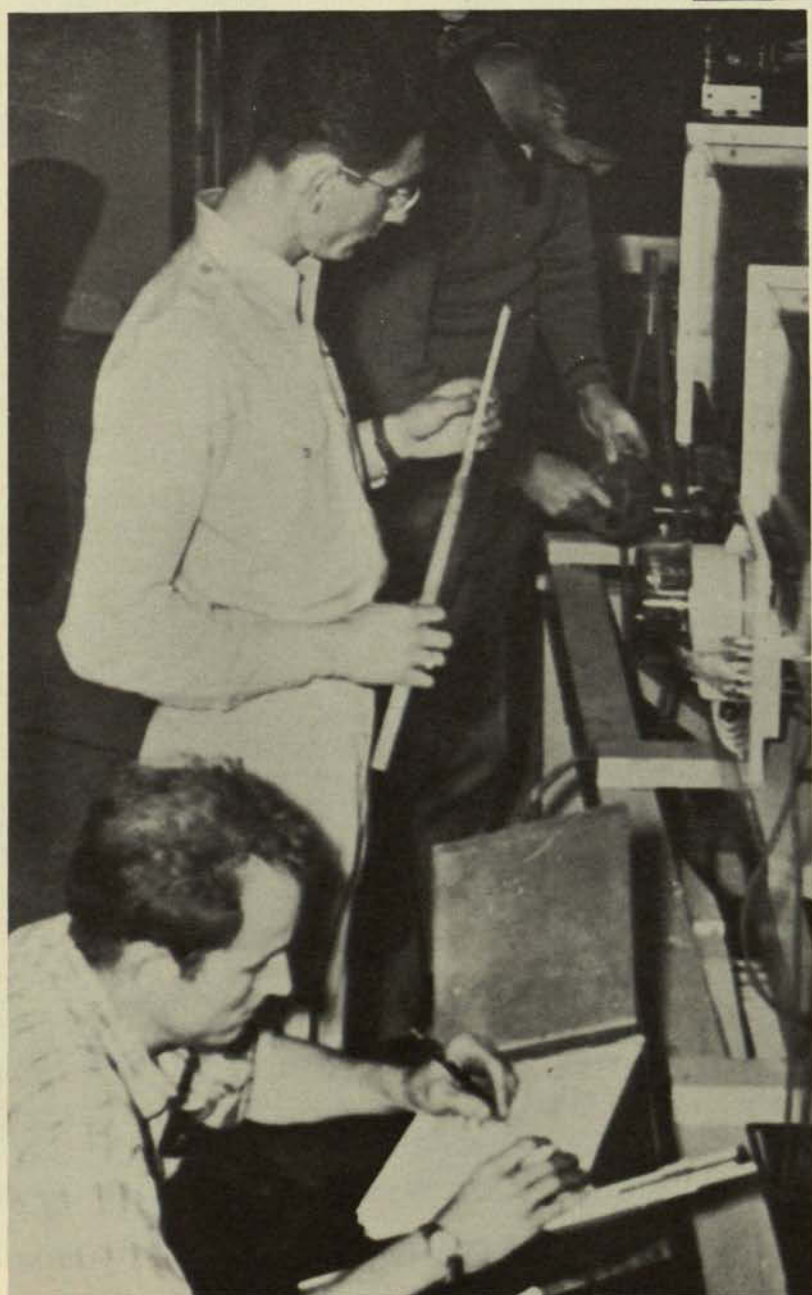
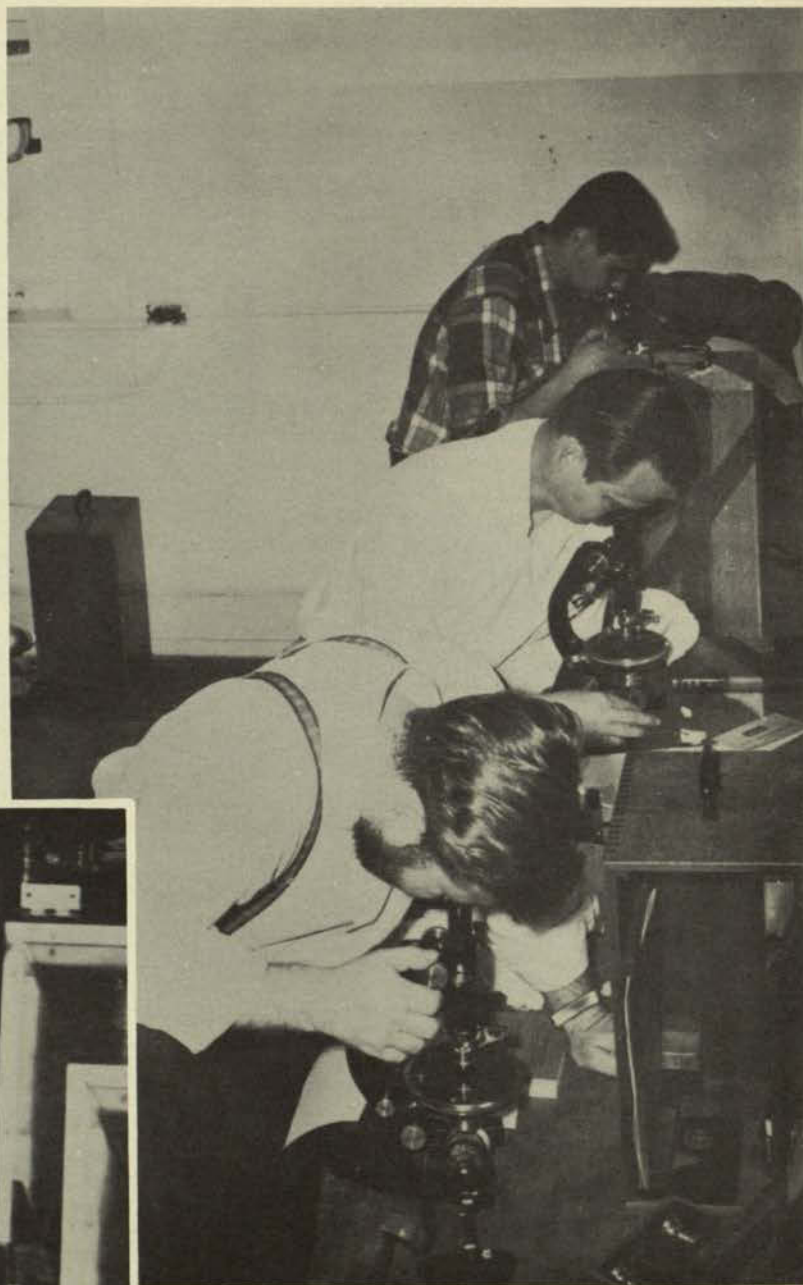
DENWOOD ROSS, *President*, MR. WILLIAM MCDILL, *Sponsor*

In 1948 twelve men formed the local chapter of the American Society of Civil Engineers, an organization which has as its purpose the furtherization of the professional spirit among chemical engineers. During the short interim since its organization on campus, the group's membership has tripled. Members are afforded the advantage of becoming better acquainted, and of familiarizing themselves with topics of interest to civil engineers.



Mr. E. J. Guildeman, Charles Bigelow, Mr. McDill, Gerald Campbell, Richard Cook, Jerry Gilmer, Robert Hauke, Frank Myers, William Davis, Jay Turner, William Quinn, George Giles, Kenneth Twiss, Rosendo Gutierrez, Oscar Cano, I. B. Johnson, Pedro Herrera, Winston Yeargin, Denwood Ross, Edward Crespo-Krauss, George Mengel, Arnold Palmore, Carlos Servin, Armando Bustamante, David Vilven, Horace Perea.

Analyzing rock formations



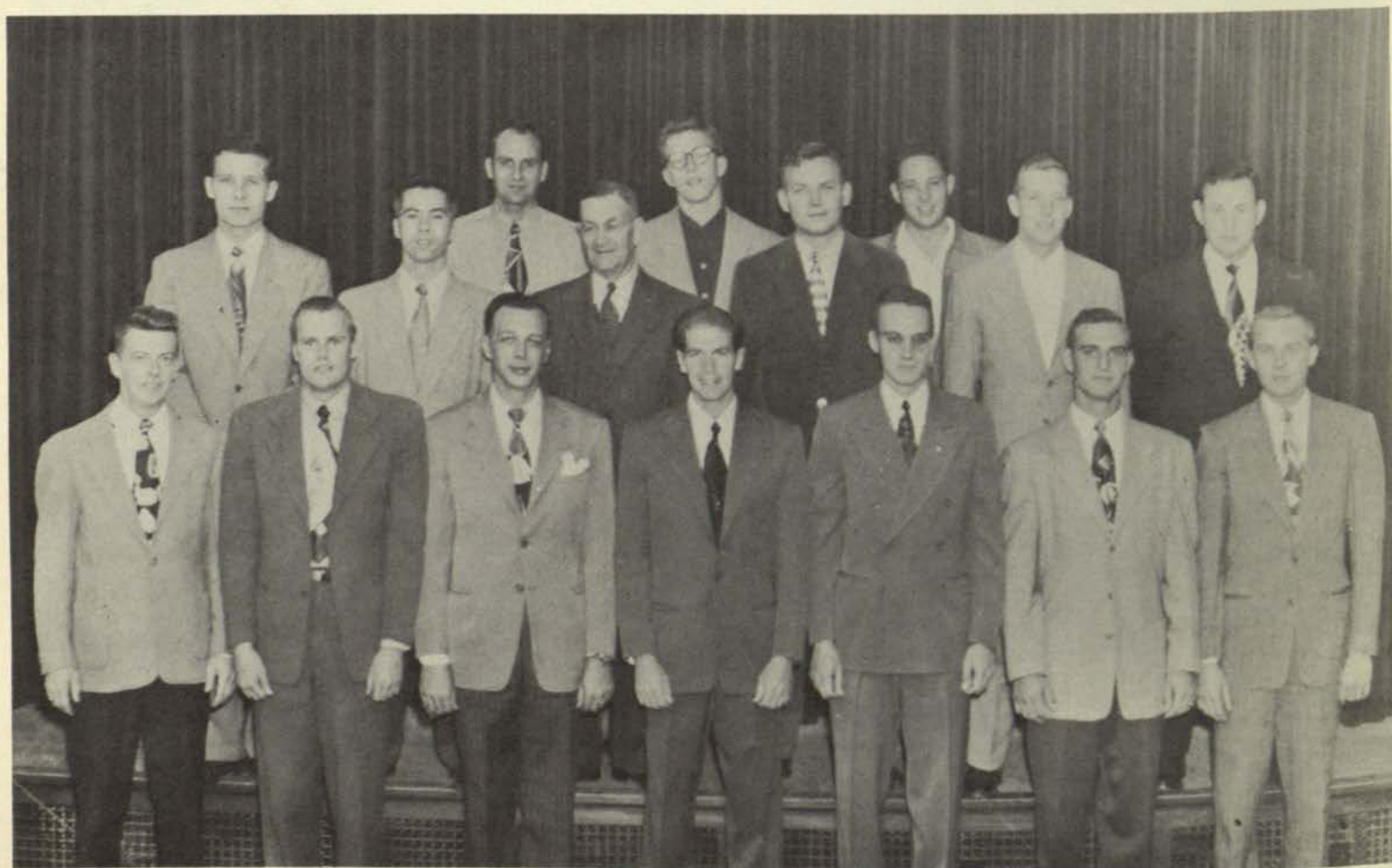
Wheels, gadgets, notes

AMERICAN INSTITUTE OF MINING AND METALLURGICAL ENGINEERS

Recognizing the fact that its benefits will extend beyond college and graduation, mining students are exceptionally eager to join AIME. Consequently, the organization's membership steadily grows. Benefits include subscription to a technical magazine on mining, metallurgy, and petroleum engineering. There is a small annual fee for which the advantage of carrying an identification card, recognized throughout the world, is had.



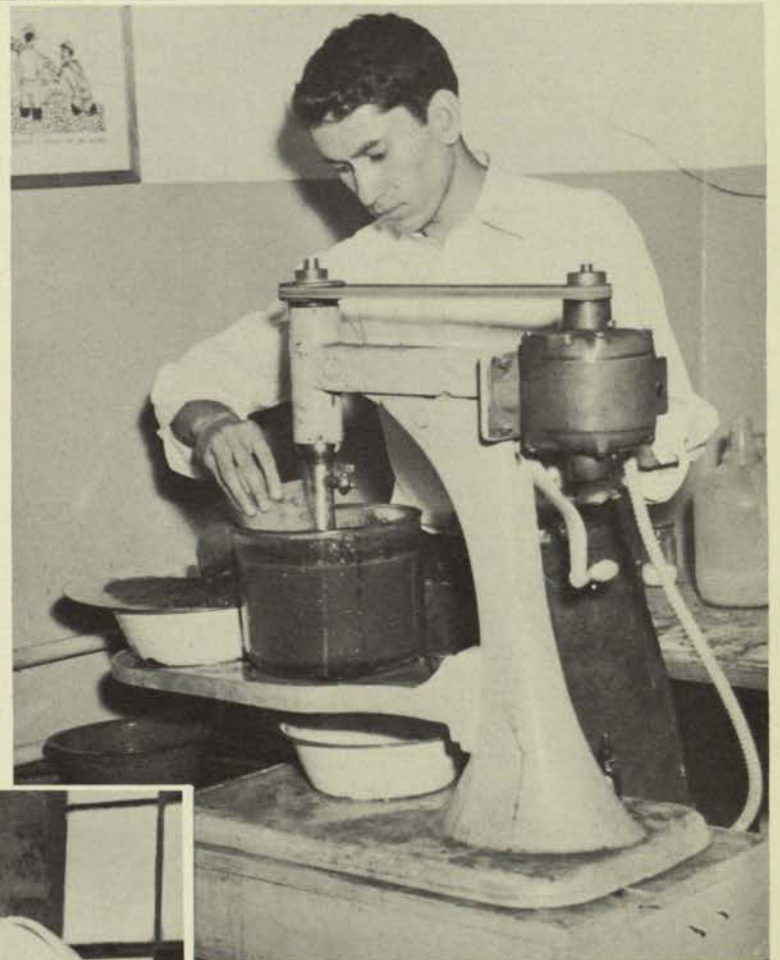
SAMUEL HEINRICHS, *President*, MR. JOHN GRAHAM, *Sponsor*



First Row: Walter Hjalmsquist, Richard Schneider, John Fatheree, Otis Gallas, John Pulte. *Second Row:* Alexander Gonzalez, Thomas Wilson, Mr. Graham, William Williams, Robert Little, Samuel Heinrichs. *Third Row:* Julius Ferman, Charles Dalrymple, Richard Rosenberg.



Blowpipe ore analysis



Abdullah vs. flotation



Testing temperature with pyrometer