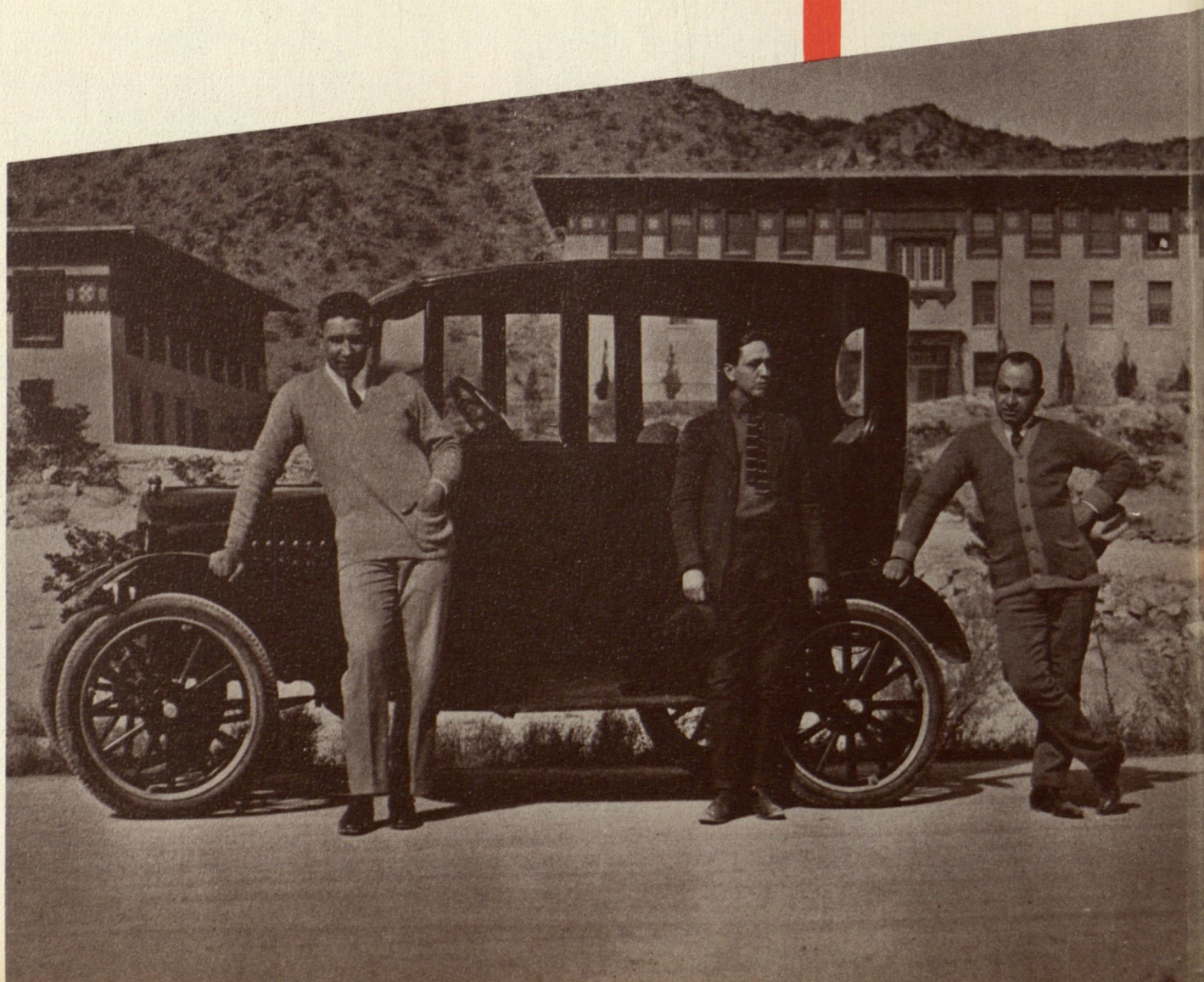


s p o t l i g h t

Every school has a few who excell, not only in scholarship, but in those activities that add greatly to student life.

Thirty years ago, those students hitched their wagons to a star and rode around in high topped cars, when it meant something to be one of the privileged few to own an automobile.

With that era gone, campus life has grown up with the college, there are more dances, plays, and a greater variety of varsity activities.





Today there are almost as many cars as students, and Monday morning finds the campus parking lots overflowing. Convertibles, American and foreign sports cars with the Texas Western queens lead every parade. That Texas Western has more than just a few exceptional students is proved by the rapidly growing reputation of the college.

These are the students the Flowsheet spotlights.



March 8, 1956

Dear Mr. Williams,
It has indeed been a pleasure to select
a winner for your Beauty Contest. I
might add that it was a rather difficult
task as all of your contestants were so
sweet. Thank you very much for asking
me to help you.

Sincerely,

Grace Kelly



Bobba Hadlock

FLOWSHEET QUEEN

FLWSHEET



Barbara Pringle



Anna Jean Wipf

HONOREES



Beth Merrill



Colleen Roberts



Elaine Abbott

MISS TWC

Miss TWC is the winner of a bathing beauty contest held on ALL TWC Day



Joy Dee Hatchett
SUMMER SCHOOL QUEEN

The Summer School Queen is chosen in a beauty contest and is crowned at the annual summer school dance.



Collette Cline
ALL TWC FAVORITE

The All TWC Favorite is chosen in an election by members of the Student Association.



Margaret Finerty
TWC SUN PRINCESS

The Sun Princess is elected by members of the Student Association to represent Texas Western in the Sun Carnival festivities preceding the New Year's Sun Bowl football game.



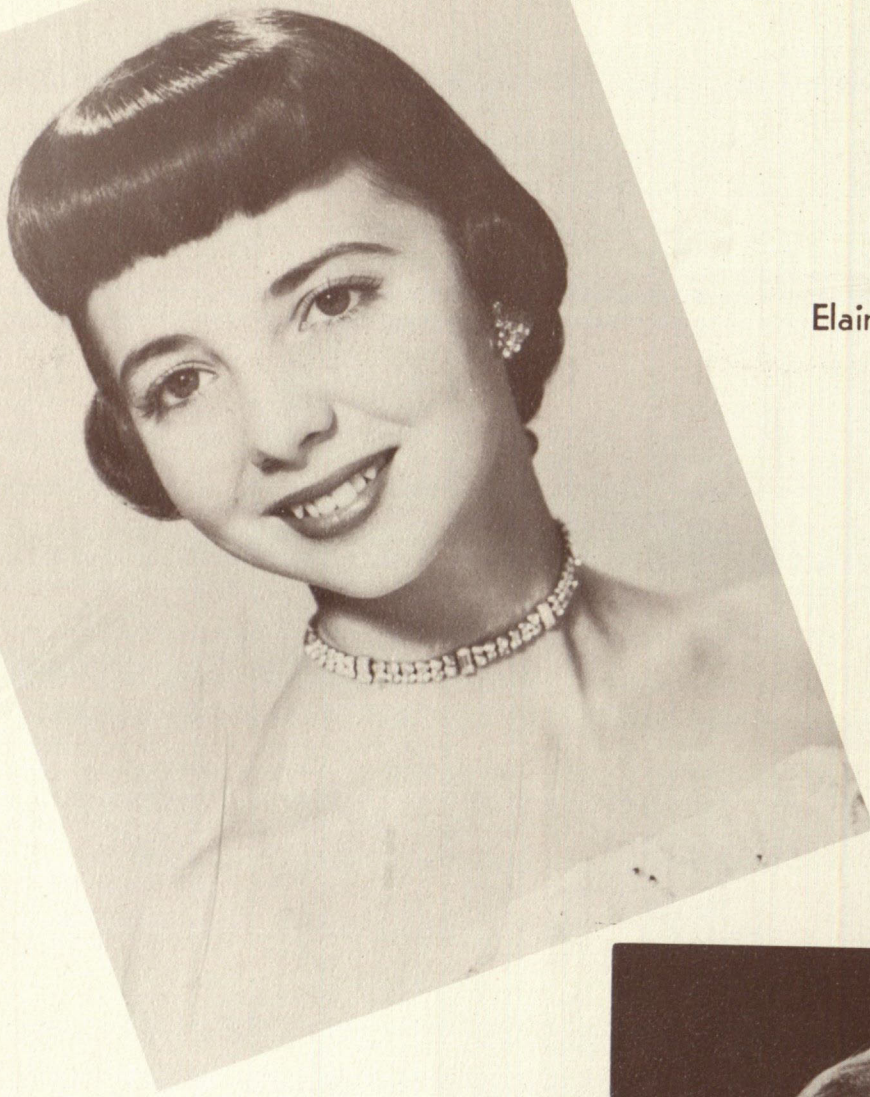
JANE POSES ON CAMPUS



Jane Grubb
MOST BEAUTIFUL GIRL

BEAUTY

Elaine Abbott



Kay Hornaday



RUNNERS - UP

Dorothy Reed



Jo Beth Stevens



Dorothy Reed
MISS GOLD DIGGER

Miss Gold Digger is elected in a contest held each year in conjunction with the Campus Chest Drive. Each penny donated in the name of a candidate is a vote.



Michael Bass

MR. MINER

Mr. Miner is elected in a contest held each year in conjunction with the Campus Chest Drive. Each penny donated in the name of a candidate is a vote.



Pat Young
BAND SWEETHEART

Janice Bernard

MISS PROSPECTOR

Miss Prospector is the representative of the organization which contributed the most money per capita to the Campus Chest Drive.





Charlotte Smith

POSTURE QUEEN



Gerry Lynch
SNOW FIESTA QUEEN

The Snow Fiesta Queen is elected by members of the Student Association. She is crowned at the dance which ends the Fiesta held in New Mexico between semesters.



Michael Bass
COED BALL KING

The Coed Ball King, chosen by a secret Coed Council Committee,
is crowned at the annual Coed Ball preceding the Christmas Holidays.

1956 SUN CARNIVAL
DUCHESSSES



Bettye Smith

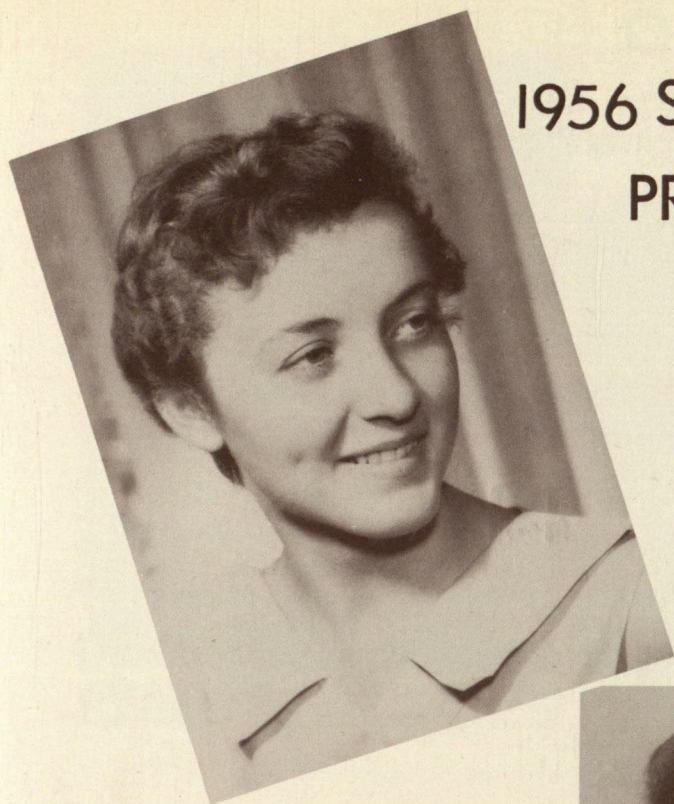


Elaine Abbott



Joy Dee Hatchett

1956 SUN CARNIVAL
PRINCESSES



Kate Hargrove



Lavon Hartrick



Corrie
Hernandez



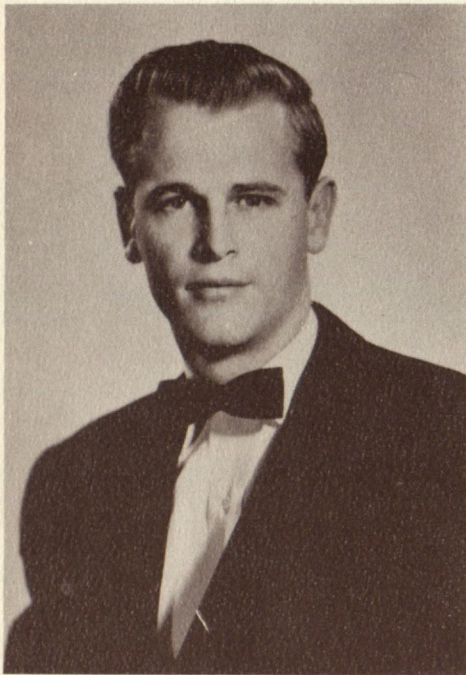
Dale Reynolds



Billie Burson

WHO'S WHO

IN
AMERICAN COLLEGES AND UNIVERSITIES



H. P. ADKINSON

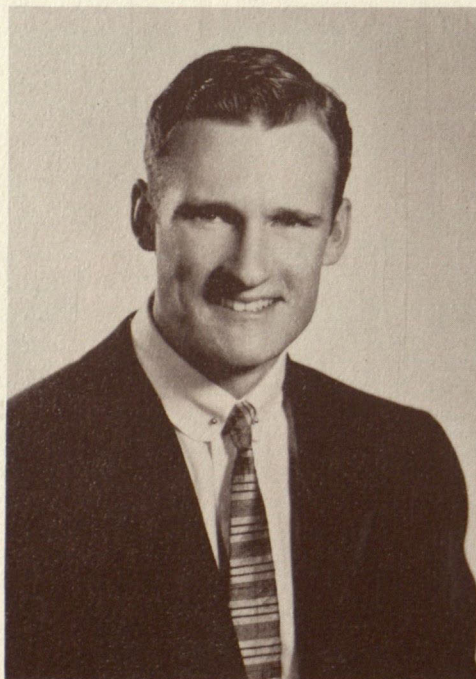


SHIRLEY BAKER

The members are men or women students who are graduating seniors. They are selected on the basis of a grade average of 2.8 or higher; are current members of the Student Association; show leadership and have participated in campus activities; possess real citizenship qualities and show promise of future usefulness to business and society.



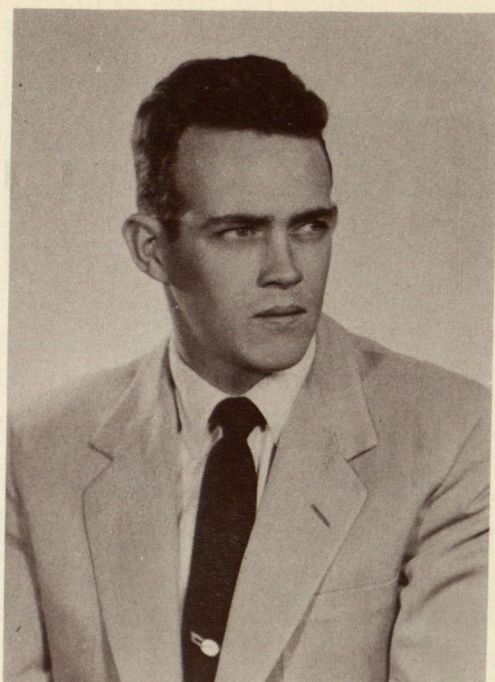
MICHAEL BASS



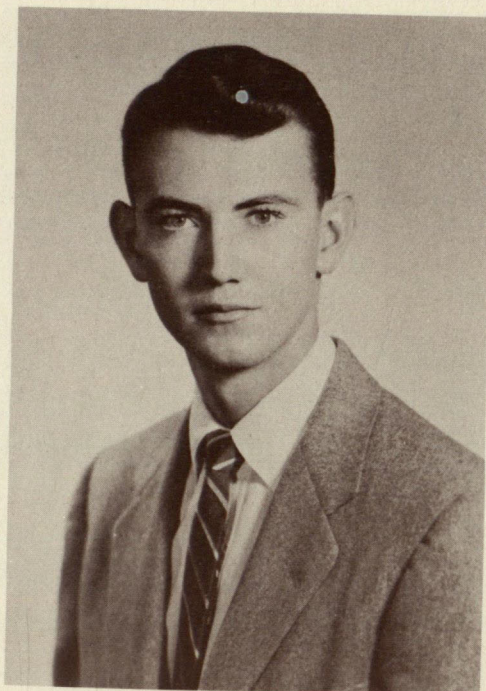
CHARLES BOYD



SHARON COLE



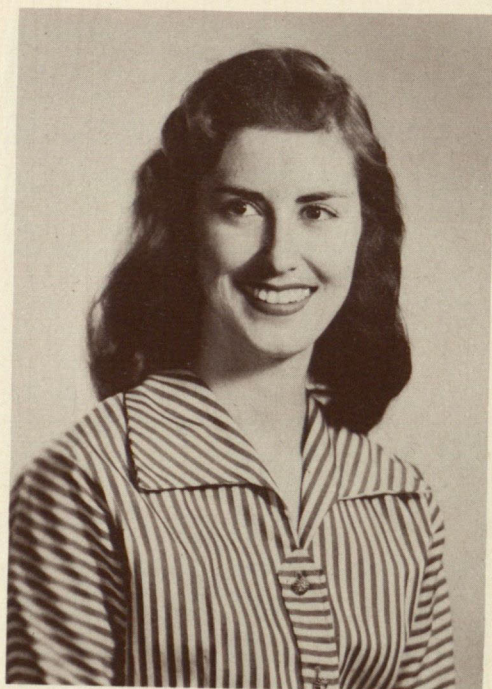
JOHN COX



BARRY DOOLITTLE



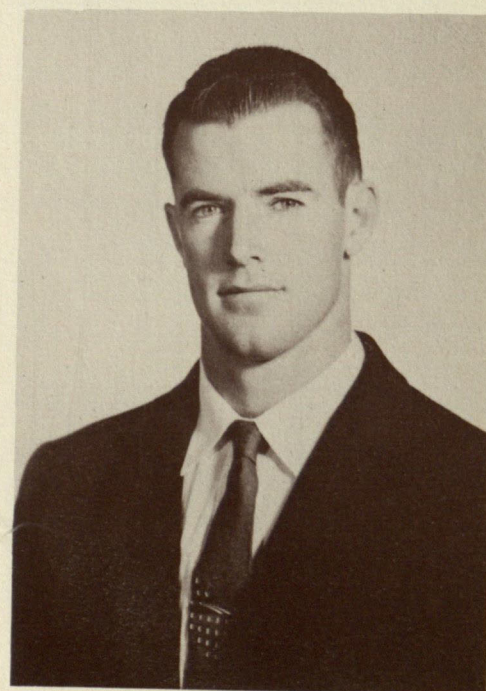
MARY BETH DOOLITTLE



GLORIA ESTRADA



MARGARET FINERTY

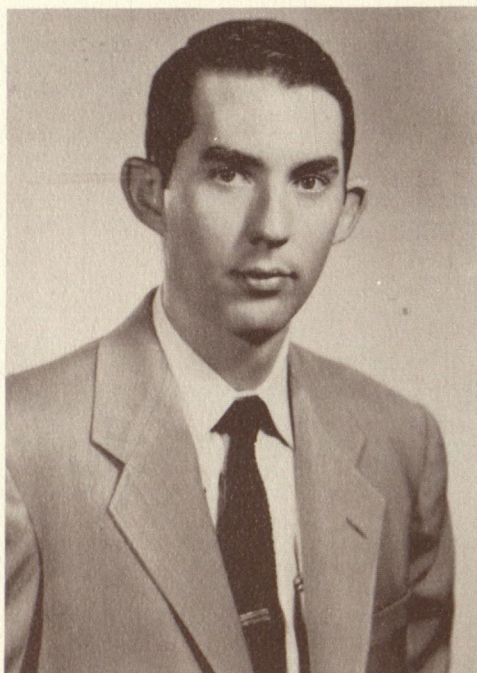


MICHAEL FINERTY

WHO'S WHO
IN
AMERICAN COLLEGES AND UNIVERSITIES



BARBARA FISHER



PETE GREY



BRONIA LOWENSTEIN



FRED LOFFTUS



STEVE LUNG



R. H. MAIER

WHO'S WHO
IN
AMERICAN COLLEGES AND UNIVERSITIES



GLORIA MARTINEZ



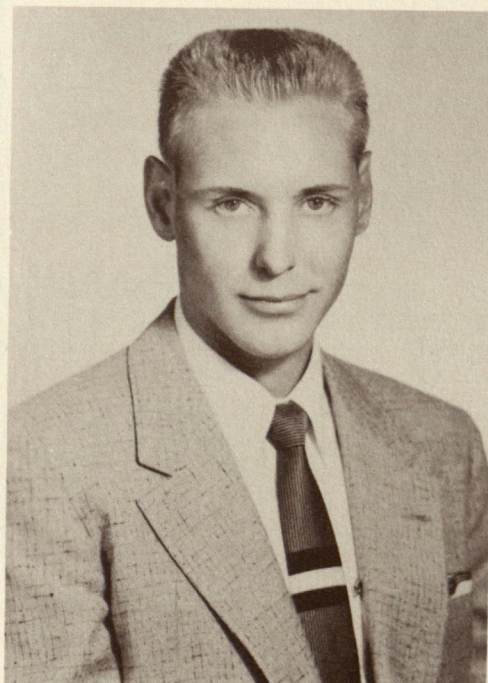
MARY NELE O'NEAL



ALFRED ORTIZ



JOE SCALES



ROBERT SCOTT

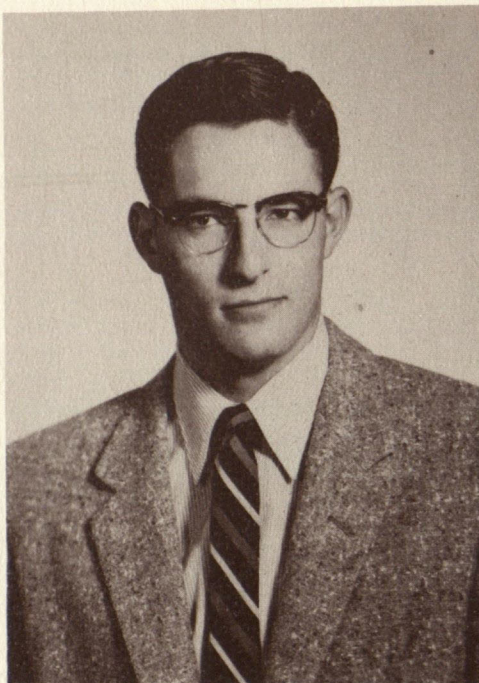


JOY SHINAUT

WHO'S WHO
IN
AMERICAN COLLEGES AND UNIVERSITIES



BETTYE SMITH



CURTIS SPIER



LOUISE STRAIN



PAT YOUNG



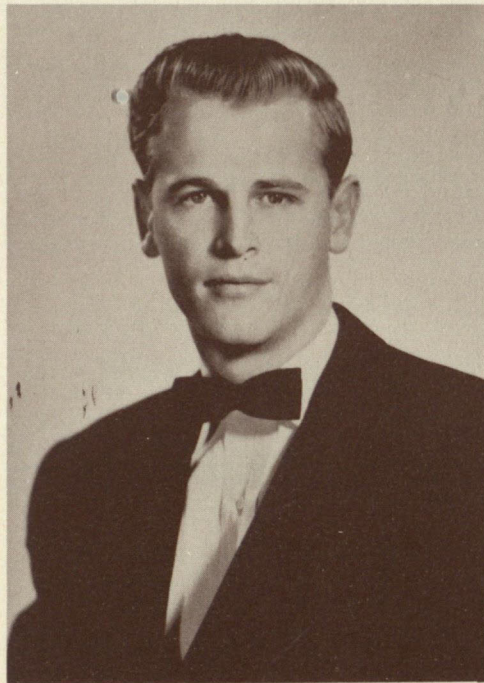
COOKY WILLIAMS



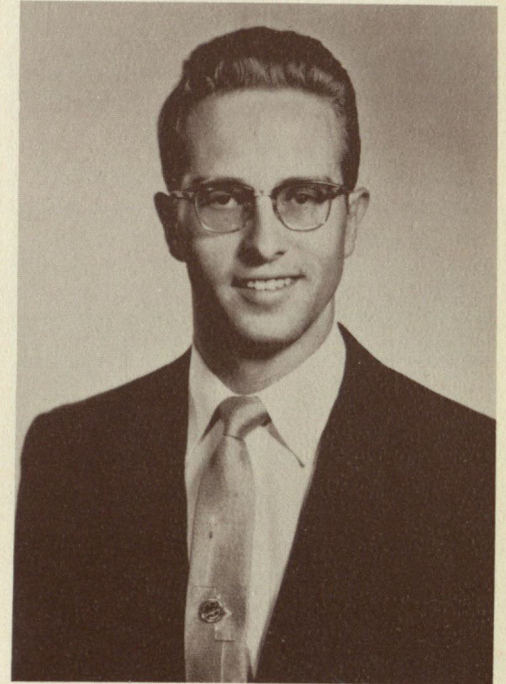
MARTHA RAE VANCE

MEN OF MINES

The members are four year students at Texas Western College and graduating senior men. They must have wide participation in campus student affairs and have held at least one administrative elective office in student organizations. They must have a minimum of a "C" average in all work taken.



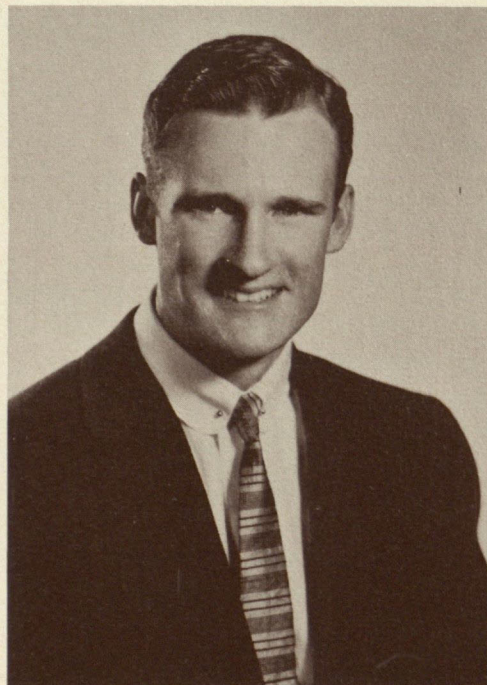
H. P. ADKINSON



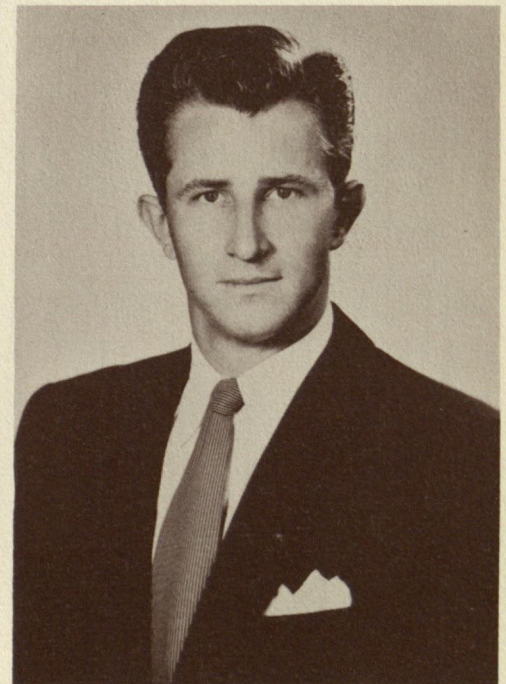
FENTON ALLEY



MICHAEL BASS

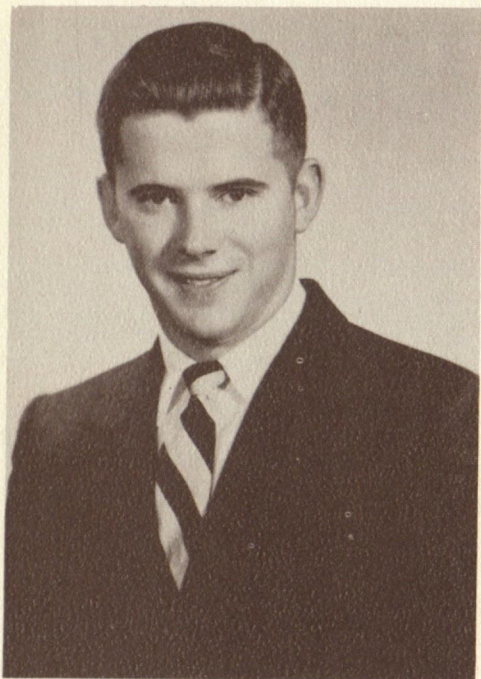


CHARLES BOYD

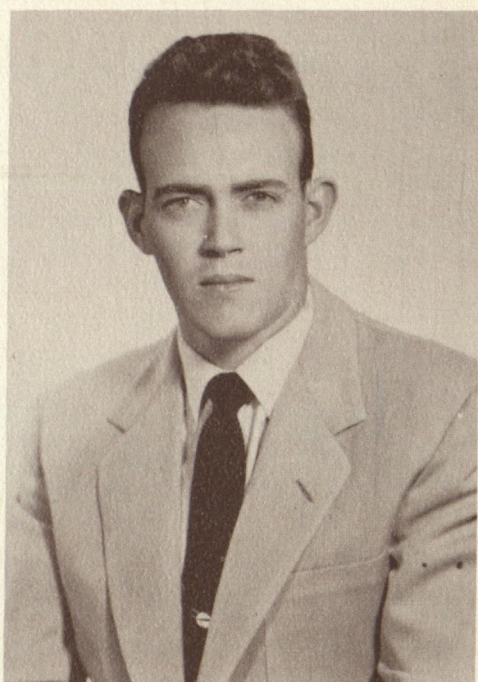


EDWARD BRAVENEC

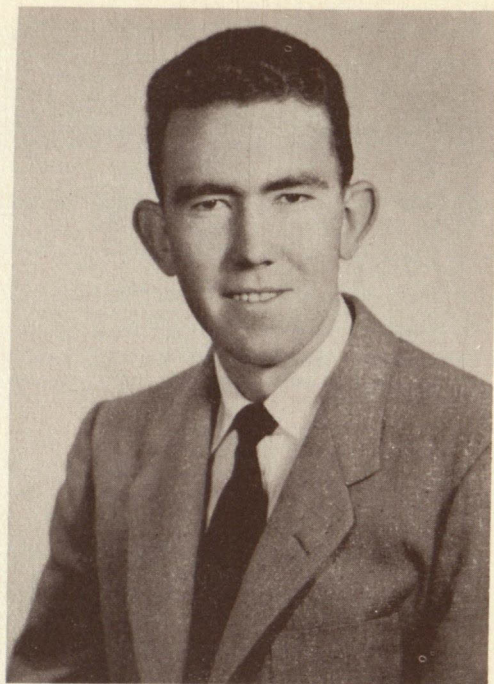
MEN OF MINES



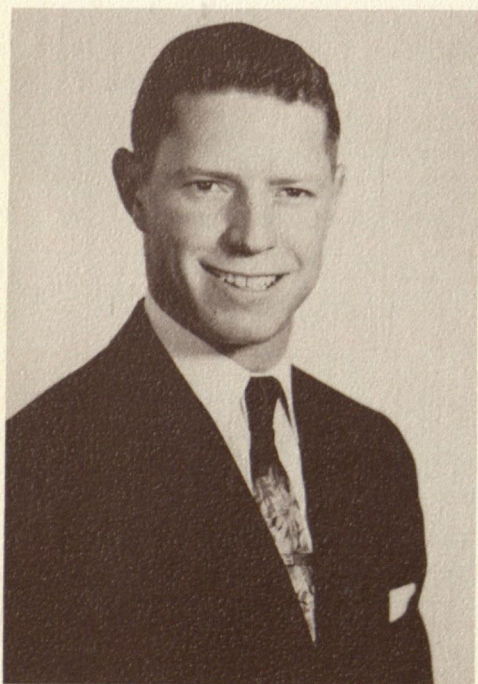
BILL CALHOUN



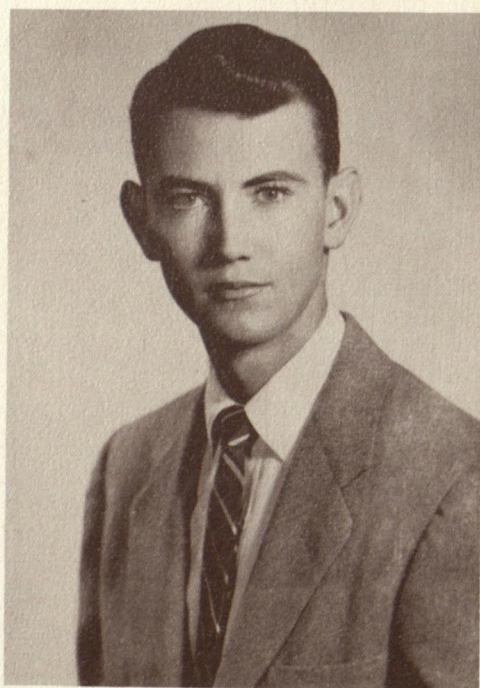
JOHN COX



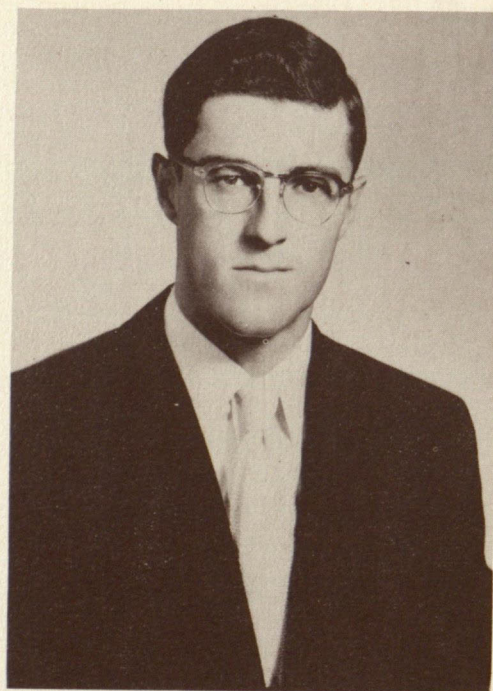
GORDON CROUCH



RICHARD CUMMINGS

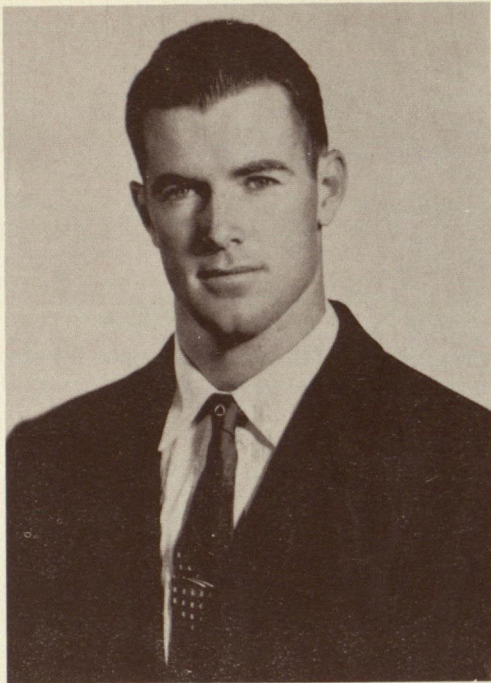


BARRY DOOLITTLE

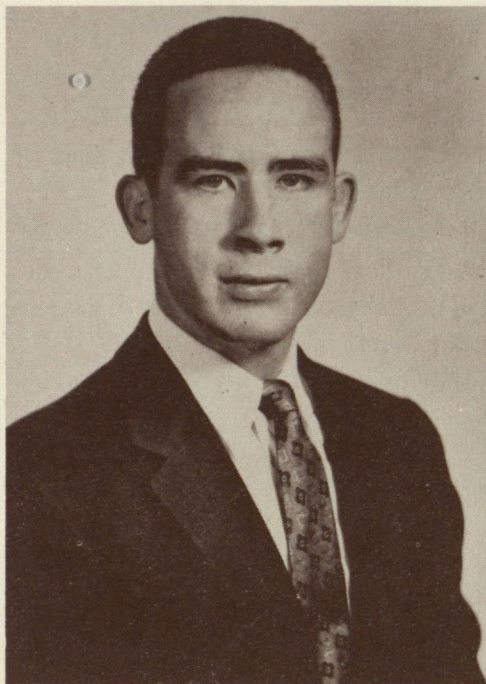


CLYDE DUNN

MEN OF MINES



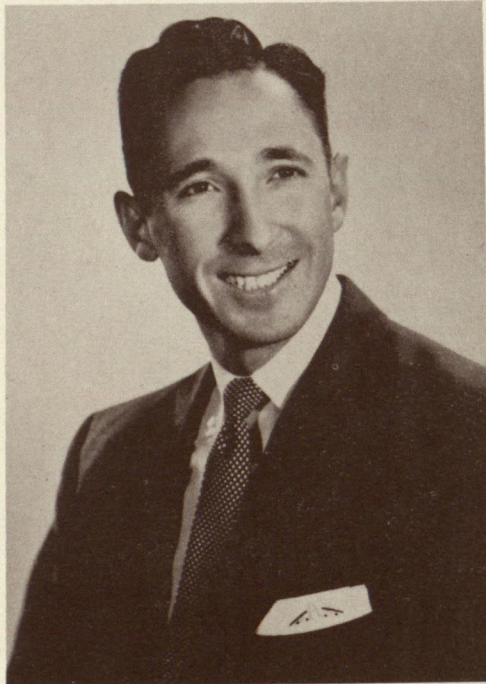
MICHAEL FINERTY



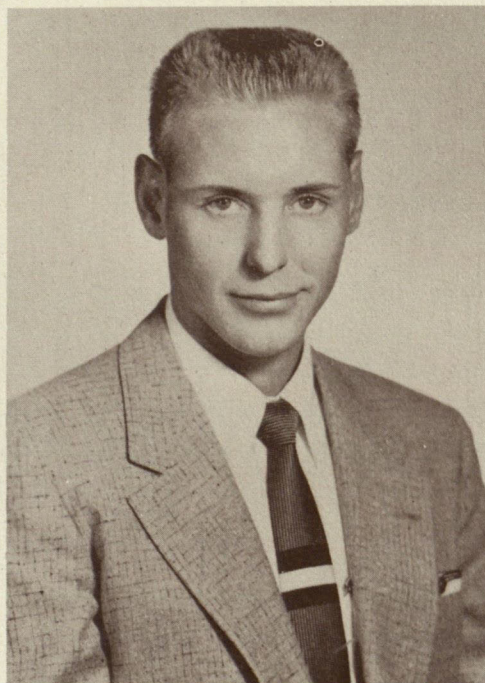
CEDRIC HUSTACE



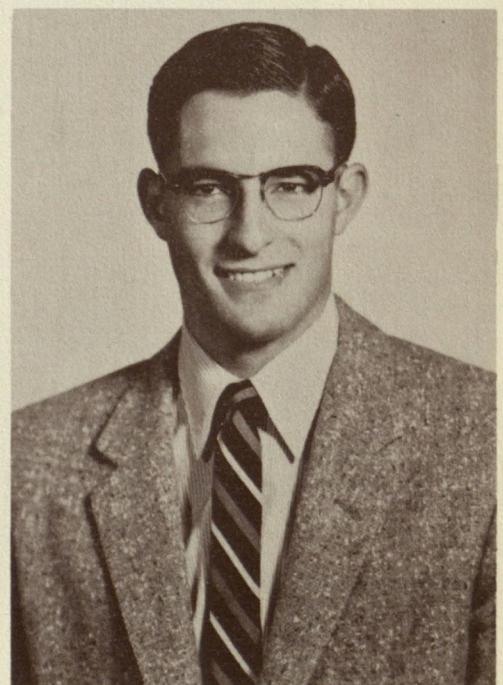
OTHON MEDINA



ALFRED ORTIZ



ROBERT SCOTT



CURTIS SPIER