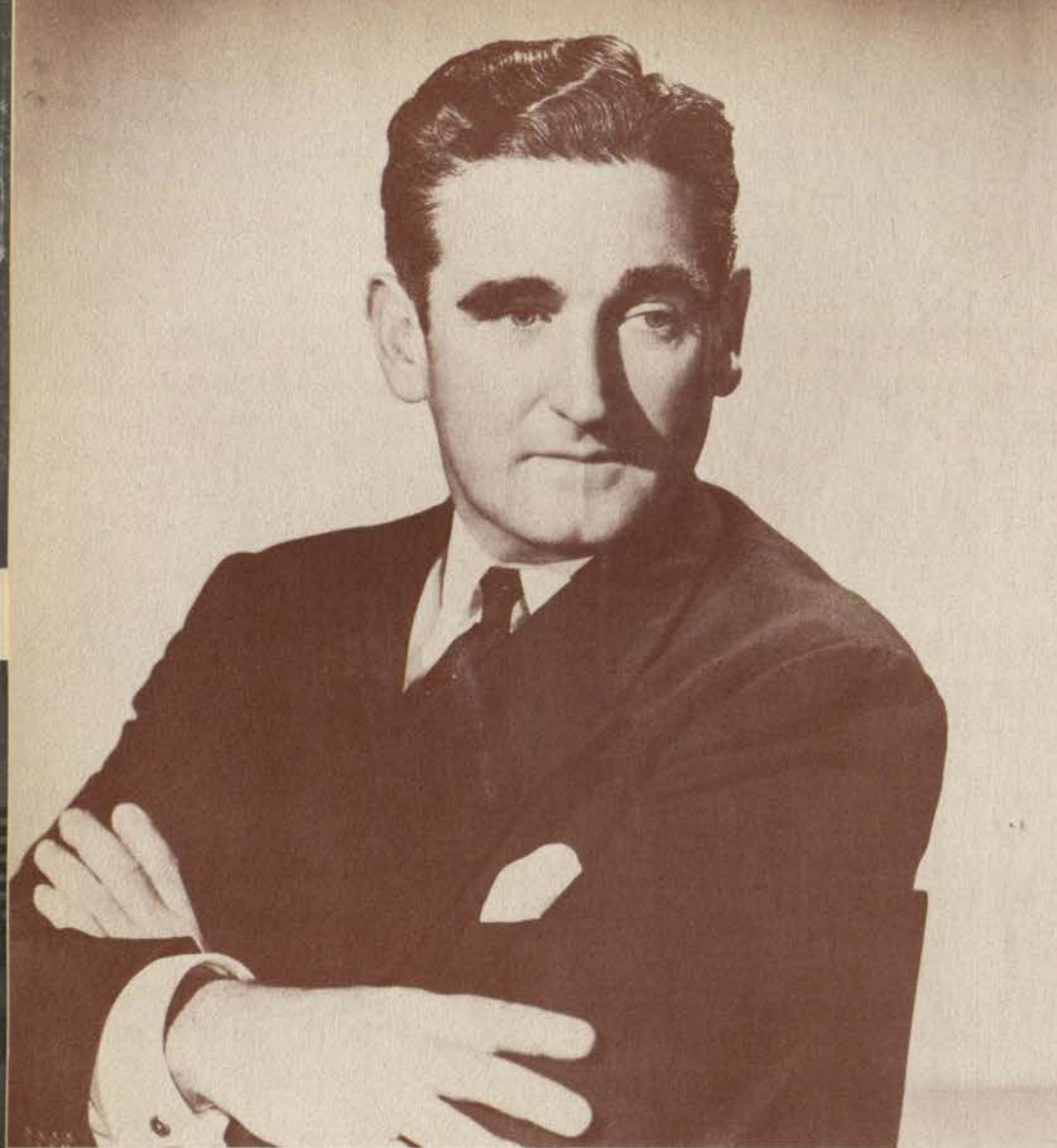


Features



SPAIN financed an expedition to search for a shorter route to the table spices of the Orient. The expedition failed, since that route was not discovered, but the Spaniards explored the new-found world, bringing with them the traditional food of Spain: beef and garlic, olive oil and wine, and a hundred more. They found Aztecs eating chili and tomatoes and chocolate.

As early American hunters in the Rockies — the mountain men — approached New Mexican settlements, they would meet hunters who had come out on the plains from Taos or Mora or Las Vegas to kill buffalo. The Americans, after weeks of living on dried meat or salt pork, were eager to taste the tortillas and spices of the *ciboleros*. Today Spanish foods are a part of our daily lives in the Southwest, and their fame has fanned out over the entire nation.



JOHN ROBERT POWERS
AGENCY CORP
247 PARK AVENUE NEW YORK CITY 17

January 5th, 1951

Mr. David Cohen
Editor, 1951 "Flowsheet"
TEXAS WESTERN COLLEGE
El Paso, Texas

Dear Mr. Cohen:

It has been a great pleasure to judge the beauty contest for your 1951 "Flowsheet." The photographs of the candidates, which you submitted, were all so attractive that I found it difficult to make a decision. It was also difficult to make my selection without seeing and talking to each contestant.

The winners, numbers 15, 1, 18, 4 and 5 were selected on the basis of personality, character and intelligence, as well as for natural beauty. My choice was influenced, of course, by my great interest in and admiration for the Natural Girl.

If the contestants are ever in New York, it would be a pleasure to meet them. With best wishes to the contestants, to the staff of the "Flowsheet" and to the students of TEXAS WESTERN COLLEGE, I am

Sincerely yours,

John Robert Powers
John Robert Powers

JRP:ea



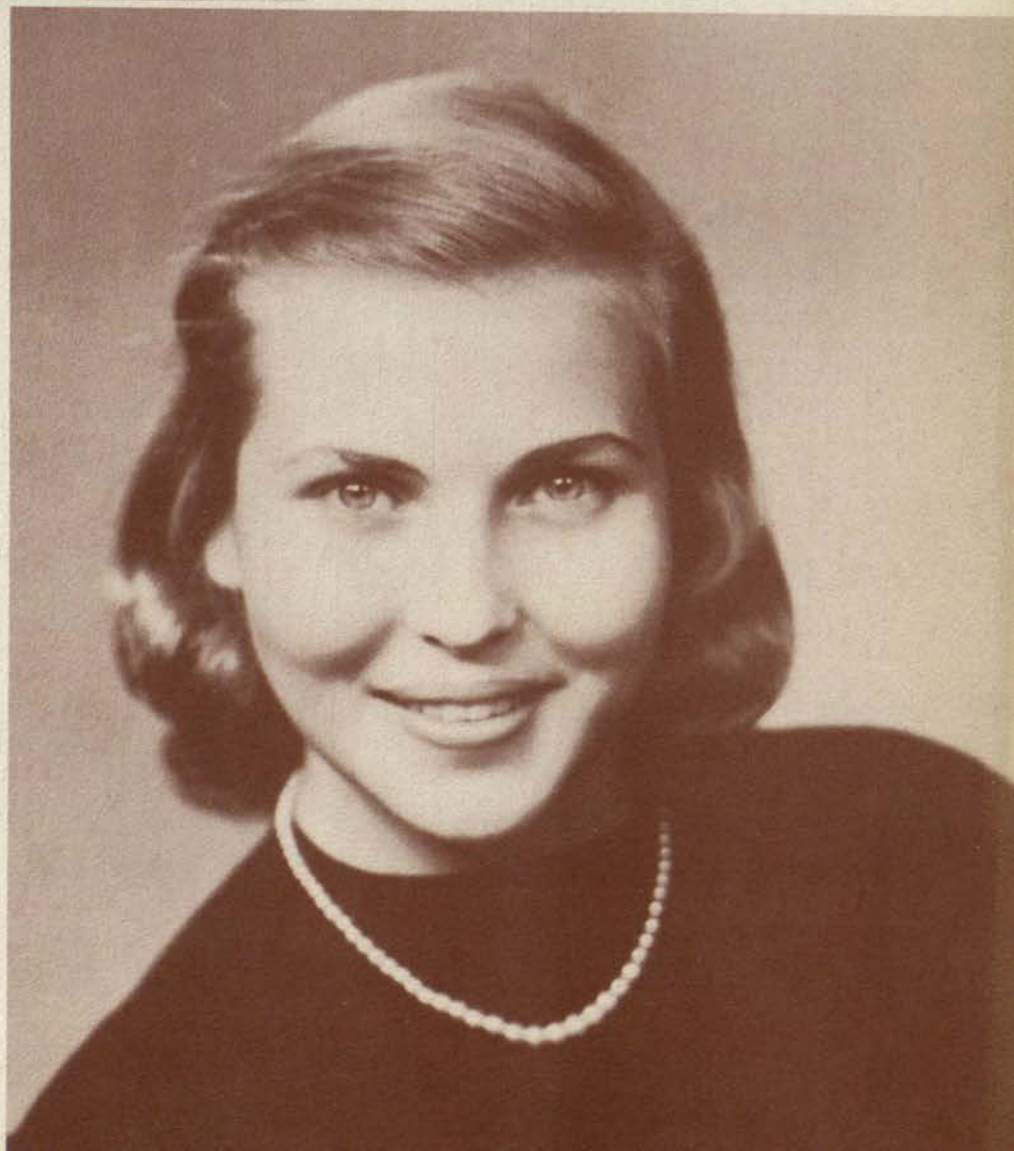
PAULA MILES
Flowsheet Queen



FLOWSHEET

PATTI MITCHUM

MARILYN TAEDTER



HONOREES

BETSY HUDSON



JACKIE PERKINS



NANCY BROADDUS
All TW Favorite



MELBA PYLE
Most Beautiful Girl



KATHERINE BEYS
Beauty



BETSY HUDSON

Beauty



PAULA MILES

Beauty



PATTI MITCHUM
Beauty



DAVID COHEN
Outstanding Student
Selected by Ex-Students Assn.



FANNIE CHOW
Outstanding Student
Selected by Ex-Students Assn.



NANCY BROADDUS
Miss TWC

WHO'S WHO IN AMERICAN COLLEGES and UNIVERSITIES

THIRTY-TWO of Texas Western's outstanding students gained the distinctive brand of Who's Who in American Colleges and Universities this year. Only graduating seniors were considered for the honor. They were selected on the basis of leadership, participation in extra curricular activities, scholarship, cooperativeness, and future usefulness to their profession or society as a whole. An eighteen-man faculty board struggled for two days to pare the number of eligible students down to thirty-two, the maximum quota set by the publishers of Who's Who. Those named received a scroll and key, and will receive a copy of the 1950-51 Who's Who manual upon completion.



OSCAR ALBRITTON

Men of Mines
Alpha Phi Omega, President
Inter-Fraternity Council,
President
Sigma Gamma Epsilon
AIME
Scientific Club
Student Council

CARLOS BLANCO



Men of Mines
Student Council
ASCE, Secretary
El Burro Staff

Chi Omega
Cheerleader
Junior Pan American
Round Table, President
Beaux Arts
KVOF Staff
Alpha Epsilon Rho
Pan Hellenic

BONNIE JEAN CATHEY





PAT CENTER

Chi Omega, President
College Players, Vice President

Alpha Psi Omega, Treasurer

Junior Pan American
Round Table

El Burro Staff

Gold Diggers, Vice President

Flowsheet Staff

Junior Pan American
Round Table

Alpha Phi Gamma, Secretary

Women's Intramural Director



FANNIE CHOW

Editor, 1951 Flowsheet
Men of Mines

Zeta Beta Tau Colony, Pres.

Alpha Psi Omega, President

Alpha Phi Gamma, Treasurer

Inter-Fraternity Council, Sec.

Cheerleader

Student Council

Lambda Chi Alpha, President

Alpha Chi

Inter-Fraternity Council

Phi Alpha Theta



SANFORD COX

Men of Mines

Sigma Alpha Epsilon,
Treasurer

Business Administration and
Economics Club, President

Inter-Fraternity Council

Kappa Kappa Psi, President

Band

Pre-Med Club

Editor of "Tempo"



JESUS DOMINGUEZ



RAYMOND DAVENPORT



ANDREW EVEREST

Men of Mines
Sigma Alpha Epsilon
Football Team, Co-Captain
M Club
Kappa Kappa Psi
Choir
Band
Tennis Team, Captain

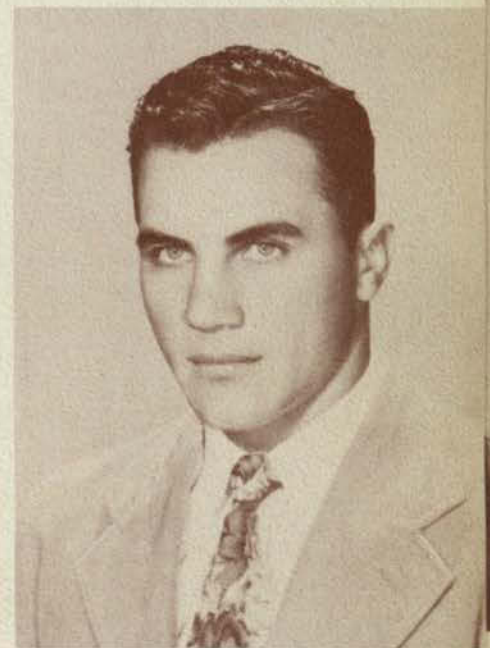


WILLIAM FAIRLEY



DANIEL FOSTER

Sigma Alpha Epsilon,
President
Alpha Chi
Pre Med Club
Inter-Fraternity Council
Men of Mines
Football Team, Co-Captain
M Club
Golf Team, Captain



HARVEY GABREL



JOHN GILEWICZ

Chi Omega
Flowsheet Queen Honoree
Student Council
Debate Club
Psychology Club
Beaux Arts
American Institute of Electrical Engineers, President



BETTY LOU GOODLOE



TONI HEREDIA

Junior Pan American

Round Table

Alpha Phi Gamma

American Chemical Society

Newman Club, Historian

Gold Diggers, Reporter

Flowsheet Staff

Prospector Staff

Pre Med Club

Delta Delta Delta, President

Football Queen

Senior Favorite

Miss TWC

Student Council

Sun Princess

Pan Hellenic Council



FRANCES HOLMSLEY



NOEL HOWARD

Men of Mines

Sigma Alpha Epsilon,

President

Scientific Club

Sigma Gamma Epsilon

Inter-Fraternity Council

Distinguished Military

Student

ROTC Association, President

Alpha Chi

Sigma Alpha Epsilon

American Institute of

Electrical Engineers



CHARLES KLEINER



ROBERT LAIT

Student Council, President

Men of Mines

Alpha Phi Omega

Scientific Club

ASCE

Chi Omega, President

SAE Sweetheart

Alpha Chi

Pan Hellenic Council

Ping Pong Doubles

Champion

Beaux Arts

Sun Carnival Duchess

Canterbury Club



GERALDINE LAIRD PORTER

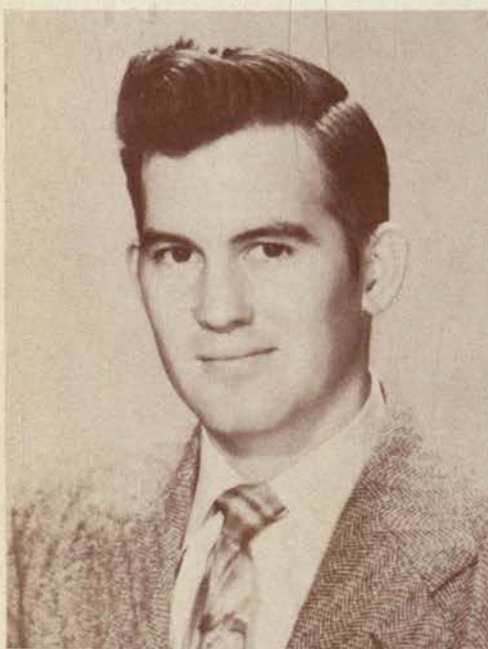


GLORIA LEON

Chi Omega, Secretary
Flowsheet Staff
El Burro Managing Editor
Alpha Phi Gamma,
Vice President
American Chemical Society
Pre Med Club
Newman Club
Beaux Arts
Tau Kappa Epsilon, President
Football Letterman
M Club
Honor Cadet ROTC Summer
Camp
ROTC Battalion Commander



CORDELL McCRAW



DAVID McFARLAND

Phi Kappa Tau, President
Inter-Fraternity Council,
President
Scientific Club
Student Council
Debate Club
Chi Omega, Vice President
Beaux Arts, President
Dorm Council
Pre Med Club
KVOF Staff
Gold Diggers
Women's Athletic Council



SUE JANE MAYFIELD



JANE PIATT

Zeta Tau Alpha
Cheerleader
Pan American Round Table
Newman Club
KVOF Staff
College Players
Alpha Psi Omega, Secretary
1st place in Women's Radio
Speaking
El Burro, Editor
Alpha Epsilon Rho
Alpha Phi Gamma
Tau Kappa Epsilon



NEAL RICHARDS



HAWLEY RICHESON

Editor, Prospector
Men of Mines
Alpha Phi Gamma, President
Tau Kappa Epsilon
Flowsheet Copy Editor
El Burro Advisory Board
Zeta Tau Alpha, President
Pan Hellenic Council,
Treasurer



MRS. POLLY SADDLER



JOHN SIQUEIROS

Men of Mines
Student Council, Vice
President
ROTC Senior Class
Representative
Cavaliers
KVOF Staff, Program
Director
Tau Kappa Epsilon
Men of Mines
Student Council
Alpha Phi Omega, President
Sigma Gamma Epsilon
Scientific Club
Inter-Fraternity Council



JAMES THOMAS



ALBERT TILNEY

Men of Mines
Kappa Sigma, Vice President
Inter-Fraternity Council
AIME
Sigma Gamma Epsilon
Scientific Club
Men of Mines
Senior Class President
Phi Kappa Tau, Treasurer
Sigma Gamma Epsilon,
Vice President
College Players
AIME



DONALD WINSOR

MEN

OF

MINES

TEXAS WESTERN conferred one of its highest honors on twenty senior men mid-way through the fall semester. That honor was membership in the college's most coveted society, Men of Mines. Qualifications for admittance include, aside from the necessity of being a graduating senior, having a definite and proven ability in one's chosen field, and possessing the quality of leadership combined with the ability to cooperate and work with others. The men named were painstakingly selected by a nineteen-man representative faculty committee. As Men of Mines is a distinctive honor reserved for outstanding men who have attended Texas Western for a minimum of three and one-half years, no transfer students were considered.



OSCAR ALBRITTON



KENNETH CHESAK



CARLOS BLANCO

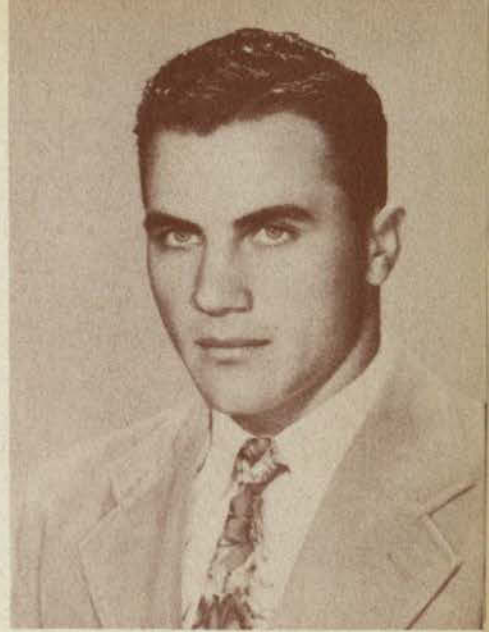


DAVID COHEN



ROBERT CANDALARIA

MEN OF



HARVEY GABREL



ANDREW EVEREST



MARLIN HAINES



RAYMOND DAVENPORT



NOEL HOWARD

MINES



ROBERT LAIT



MILAN RICE



GRANT MILLER



HAWLEY RICHESON



TOMMIE PORTER

MEN OF



JAMES THOMAS



TOM STEELE



ALBERT TILNEY



JOHN SIQUEIROS



DONALD WINSOR

MINES



BETTY JEAN CASS

TW' Sun Princess



NANCY BROADDUS
Junior Woman's Club Duchess



GERALDINE LAIRD PORTER
TW Auxiliary Duchess

Texas Western
Representatives to
Sun Carnival Court



BLANCA MENESES
Juarez Sun Princess



The Influence of Language