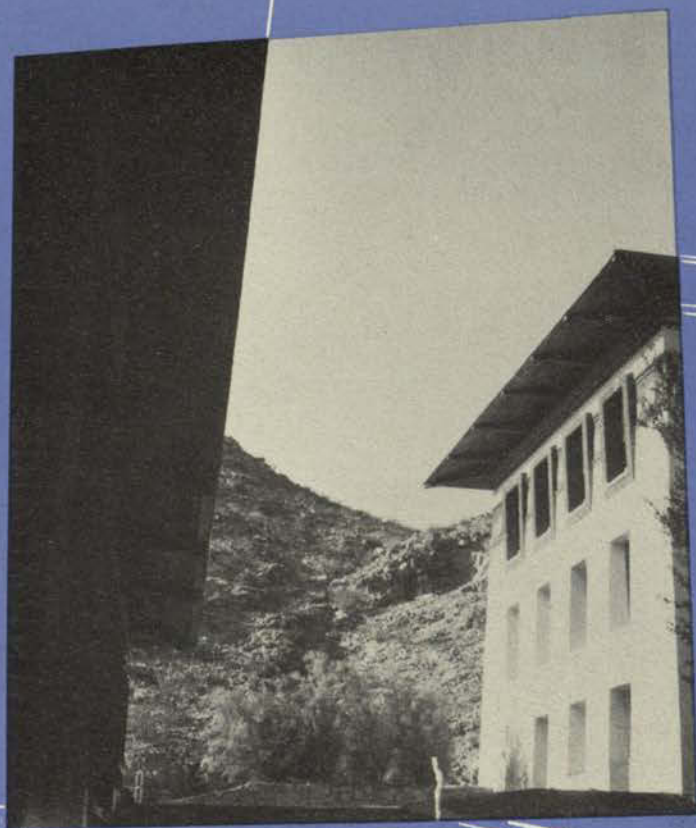


FEATURES



Judge of the
1952 FLOWSHEET QUEEN
Betsy Talbot Blackwell
EDITOR, MADEMOISELLE MAGAZINE



MADMOISELLE

The Quality Magazine for Smart Young Women 375 Madison Avenue, New York 22 Telephone Plaza 9-2080

November 29, 1951

Office of the Editor

Miss Marjorie Zabriskie
Editor-in-Chief
1952 Flowsheet
Texas Western College of
The University of Texas
El Paso, Texas

Dear Miss Zabriskie:

The selection of queen and the four runners-up was a stiff assignment because they were such an attractive lot. But the task has been done, and we are happy to tell you that in our opinion No. 24 is the winner. Also attached are the other four girls who follow in her wake. The other photographs are being mailed separately.

Our reasons for the selections: Beauty, character and personality as shown by facial structure, eyes, warmth, etc. The well-groomed, lively look that typifies MADEMOISELLE and the smart young college women who are our readers. They look bright and alert and above all - natural.

Your college is indeed to be congratulated. I have never seen a better-looking crop of girls. Naturally, and as you realize, in judging solely from photographs, we cannot take into consideration the coloring of the individual girls. Had we been able to see them "in the flesh," it is quite possible that our vote would have been somewhat different. But in any case, it was a most difficult choice to make and there should be literally dozens and dozens of runners-up.

With congratulations to the winner and the four runners-up and compliments to all the girls, I am

Sincerely yours,

MADMOISELLE

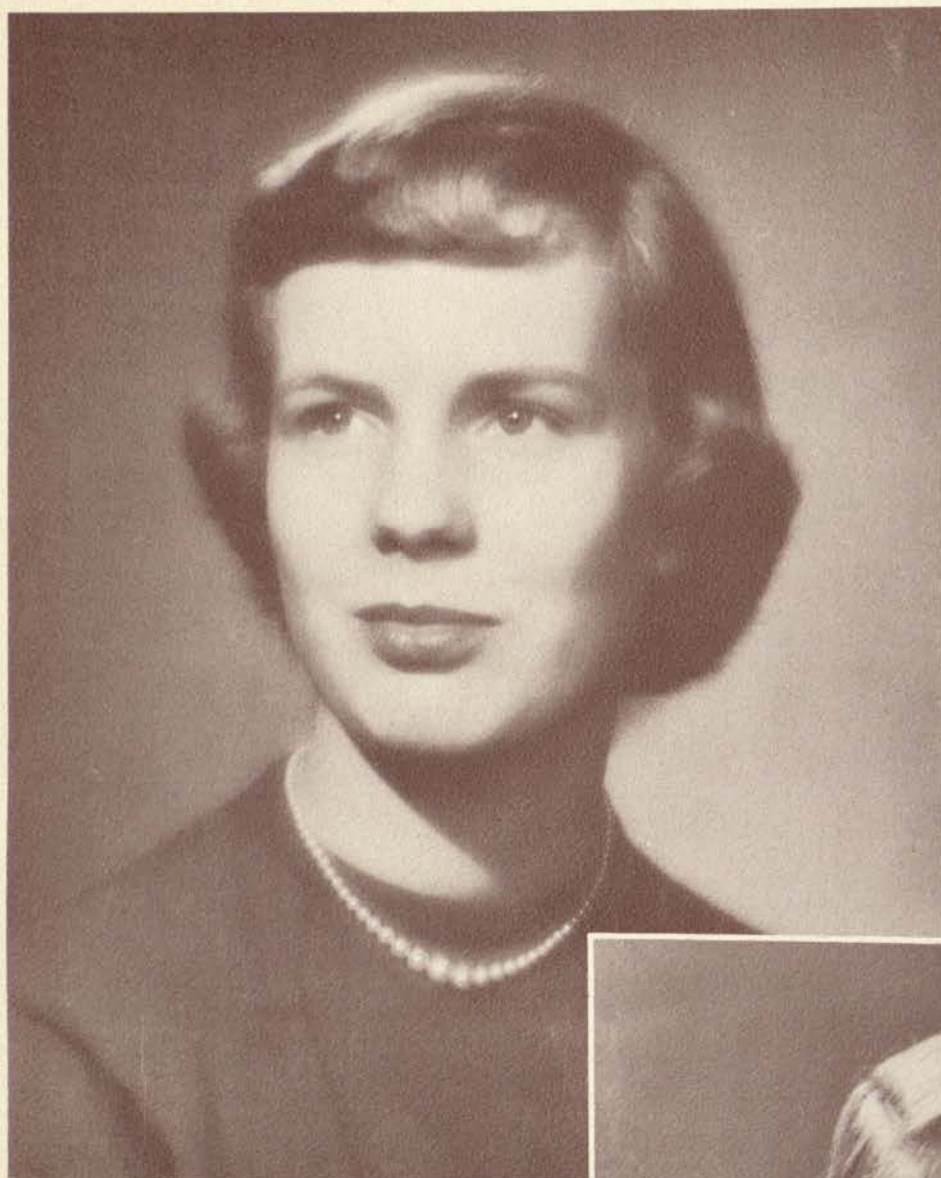
Betsy Talbot Blackwell

Betsy Talbot Blackwell
Editor-in-Chief

AIR MAIL

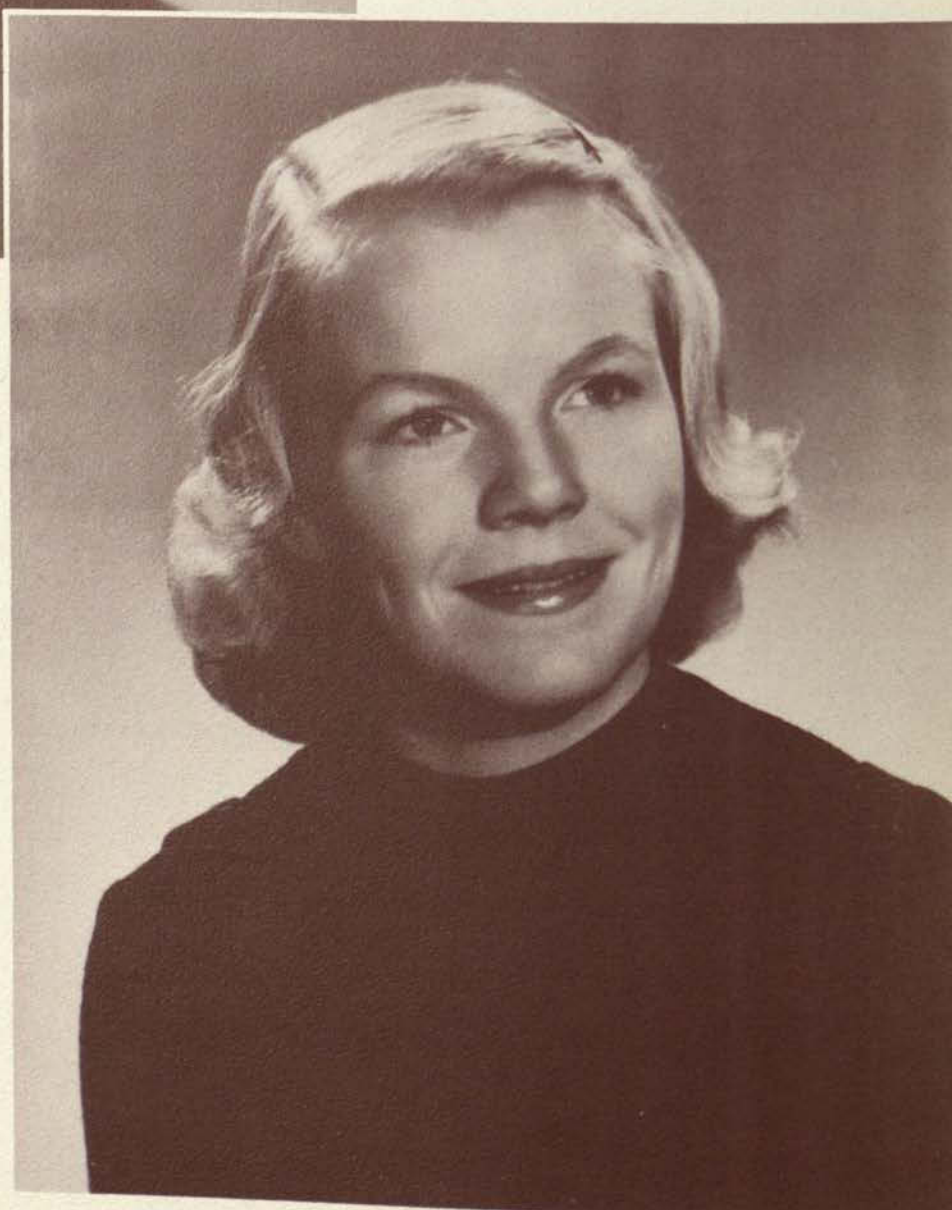


PEARLE STELLER
Flowsheet Queen



Flowsheet

ELIZABETH HOPKINS



MADELINE HOUGHTON

Honorees

ELEANOR CLAYTON



BEVERLY PACK



MONA SARGENT
All IWC Favorite

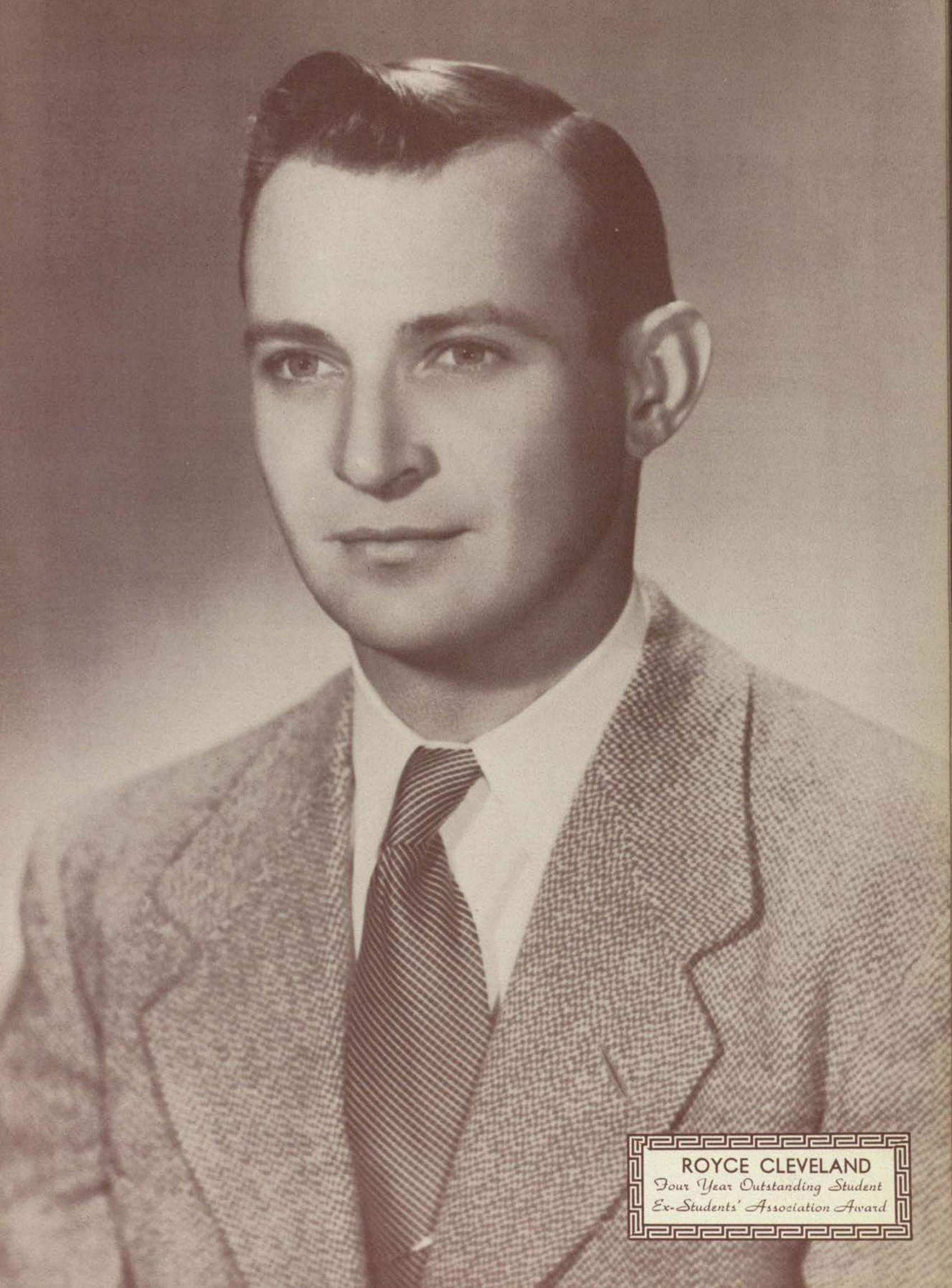


MARY BETH MORRISON
Miss JWC



JOAN CAREY

*Four Year Outstanding Student
Ex-Students' Association Award*



ROYCE CLEVELAND
*Four Year Outstanding Student
Ex-Students' Association Award*



BEVERLY PACK
Summer School Queen



PAULA MILES
JW Sun Princess

T W C



MISS PATRICIA CENTER
Duchess



MISS JOY COOK
Princess



MISS SUE JONES
Duchess

SUN CARNIVAL ROYALTY



MISS JULIANNE ODEN
Princess



MISS HARRIETT ROSS
Princess



MISS JEAN SURRATT
Princess



JEAN SURRATT
Snow Fiesta Queen

SNOW FIESTA
DUCHESES



DANNA STAMPER



MARY LOU ROCHE



BEVERLY PACK
Most Beautiful Girl



LINDA BLAINE

Beauty



JACQUELYN PERKINS
Beauty



WYNELL TERRY

Beauty



JOAN WARDEN

Beauty



NANCY ALLEN
Chi Omega
Dorm Council
Coed Council
Jr. Pan American



LORRAINE BROOM
Chi Omega
W.A.A.
B.S.U., Pres.
Beaux Arts

WHO'S WHO

In American Colleges And Universities

The distinctive honor of membership in Who's Who in American Colleges and Universities and conferred upon twenty-one seniors and two juniors at Texas Western. Participation in campus activities, leadership, scholarship, and service to the college was the basis of judging employed by a faculty selection committee. The added requirement of possessing a B average in college work placed the honor on a higher plane in 1951-52.



JOAN CAREY
Delta Delta Delta, Pres.
Alpha Chi
Alpha Psi Omega
College Players, Vice-Pres.
Dorm Council
Jr. Pan American

WHO'S WHO

In American Colleges And Universities



PATRICIA CENTER
Chi Omega, President
College Players, Vice Pres.
Alpha Psi Omega, Vice Pres.
Jr. Pan American
Beaux' Arts
Best Actress



ROYCE CLEVELAND
Kappa Sigma, Pres.
Junior Class, Vice Pres.
Student Association
Inter Fraternity Council



ALICE CHLARSON
Delta Delta Delta
Jr. Pan American
Coed Council



BETTY DAHLKE
American Chemical Society
Pre Med Club
Phrateres

WHO'S WHO

In American Colleges And Universities



GEORGE DAVIS
Sigma Alpha Epsilon, Pres.
Delta Sigma Pi
Alpha Chi



STEPHEN DUKKONY
Phi Kappa Tau, Pres.
Interfraternity Council
Cheerleader
R.O.T.C.



GLENN FURR
Sigma Alpha Epsilon
Pre Med, Vice Pres.
American Chemical Society
Honor Roll



WALTER HJALQUIST
Alpha Chi
Sigma Gamma Epsilon
A.I.M.E.

WHO'S WHO

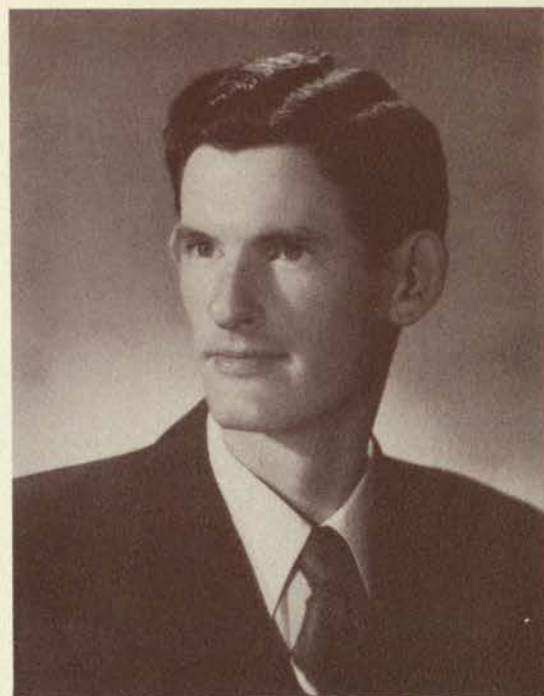
In American Colleges And Universities



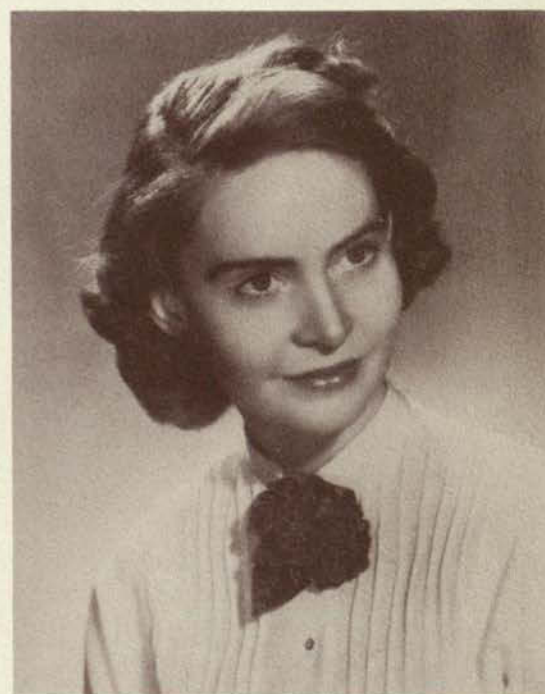
JACQUELINE JOHNSON
Jr. Pan American
Delta Gamma, Vice Pres.
Sigma Delta Pi, Vice Pres.
A.C.E.
B.S.U.



LEE ROY LUNSFORD
Sigma Gamma Epsilon
Alpha Chi, Pres.
A.I.M.E.
R.O.T.C.
Lambda Chi Alpha
B.S.U.



THOMAS LINDHOLM
Sigma Gamma Epsilon
Alpha Phi Omega
Standard Oil Co. Scholarship



JANET McDERMOTT
Prospector, Business Manager
Zeta Tau Alpha
Tau Beta Sigma

WHO'S WHO

In American Colleges And Universities



ROBERT McMASTERS
Pre Med Club
American Chemical Society
Men of Mines



BETTIE MANNING
Zeta Tau Alpha, Pres.
Coed Council, Pres.
Student Council



HARVEY MORTON
Pre Med, Pres.
Band
Chorale
American Chemical Society



STELLA SAUCEDO
Sigma Delta Pi
Newman Club
Mu Epsilon Chi
Jr. Pan American
Orchestra

WHO'S WHO

In American Colleges And Universities



MARY MARGARET WEBB
Chi Omega
College Players
Prospector Staff
El Burro Staff



ROBERT WILBOURN
Sigma Alpha Epsilon
Alpha Chi

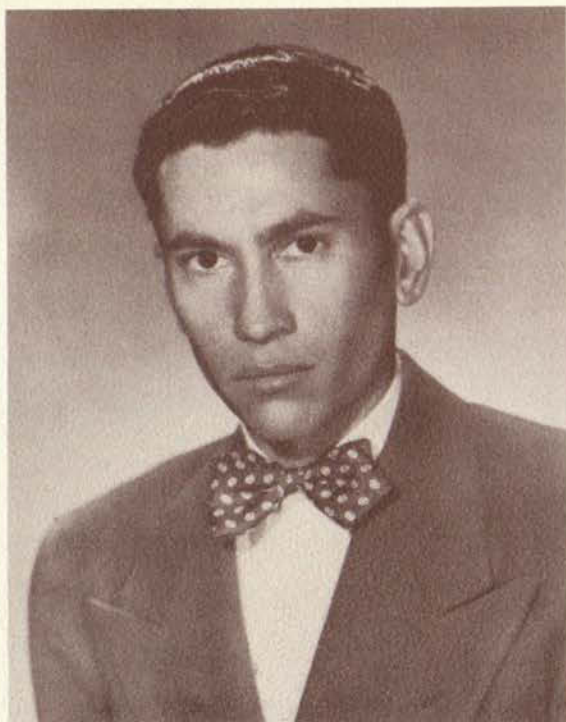


WILLIAM WILLIAMS
Alpha Phi Omega, Pres.
Sigma Gamma Epsilon
Standard Oil Scholarship
Student Council



THOMAS WILSON
Sigma Gamma Epsilon
A.I.M.E.
R.O.T.C.

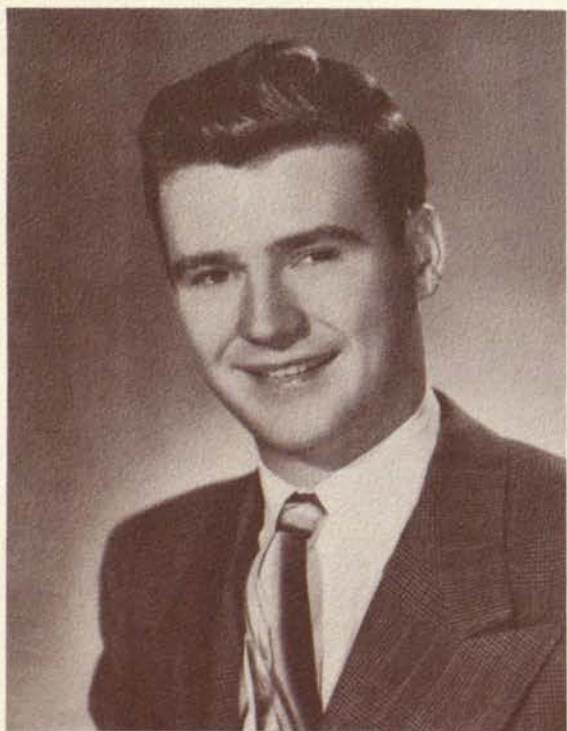
MEN OF



MUBEEN ABDULLAH



MERRILL AUTRY



RALPH BREWSTER



ARTHUR BRIEDON

MINES



LUCIUS CASILLAS



ROYCE CLEVELAND



GEORGE DAVIS

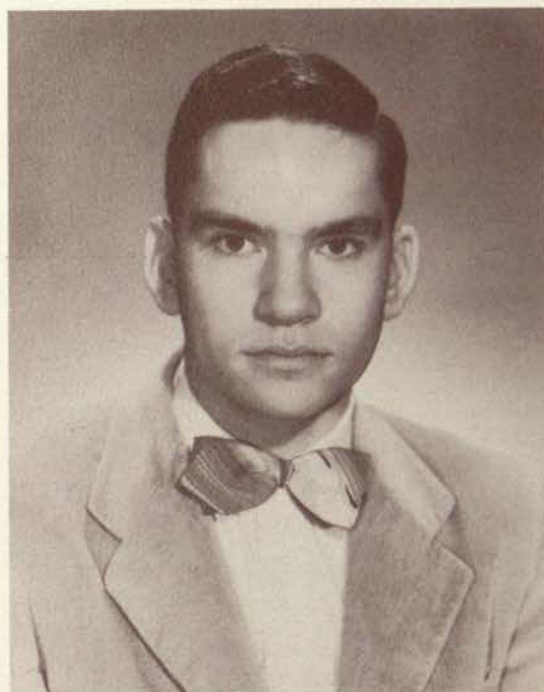


RAUL GARIBAY



WALTER HJALMQUIST

MEN OF



ROBERT LONGUEMARE



LEE ROY LUNSFORD



ROBERT McMASTERS

MINES



GEORGE MENGEL



JAVIER MONTEZ



HARVEY MORTON



JOHN PARKS

MEN OF



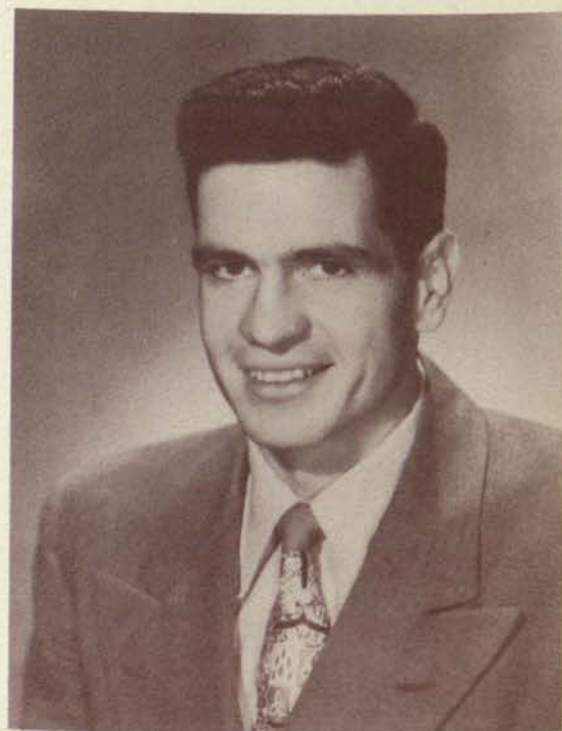
J. D. PARTRIDGE



AUDIAN PAXSON



LUIS PEREZ

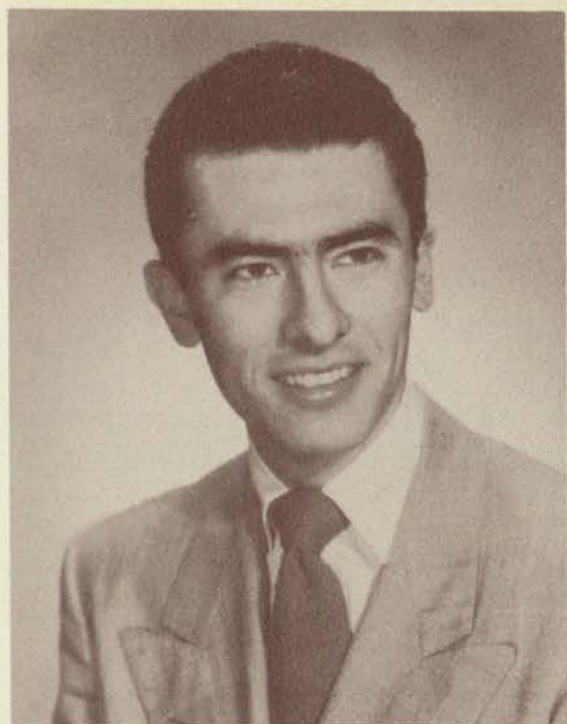


HOLLIS REYNOLDS

MINES



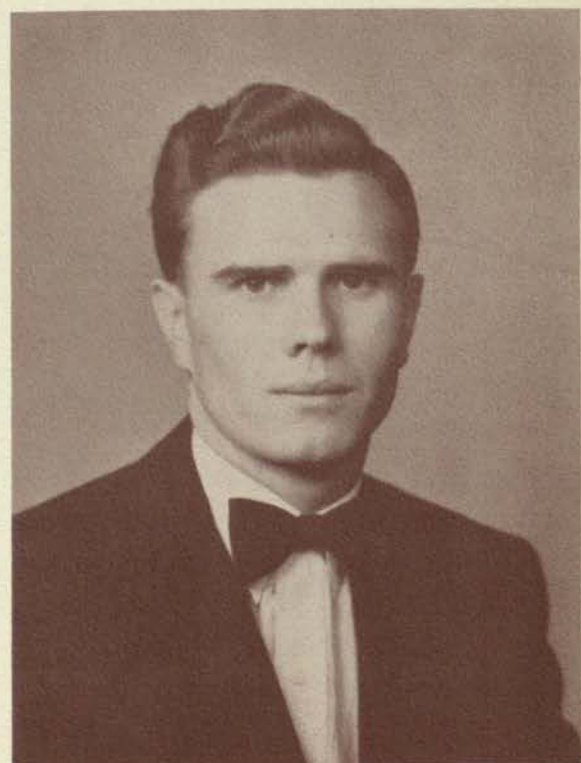
ANDREW ROLAND



RODOLFO TELLEZ



JIMMY WALKER



LARRY WYLIE