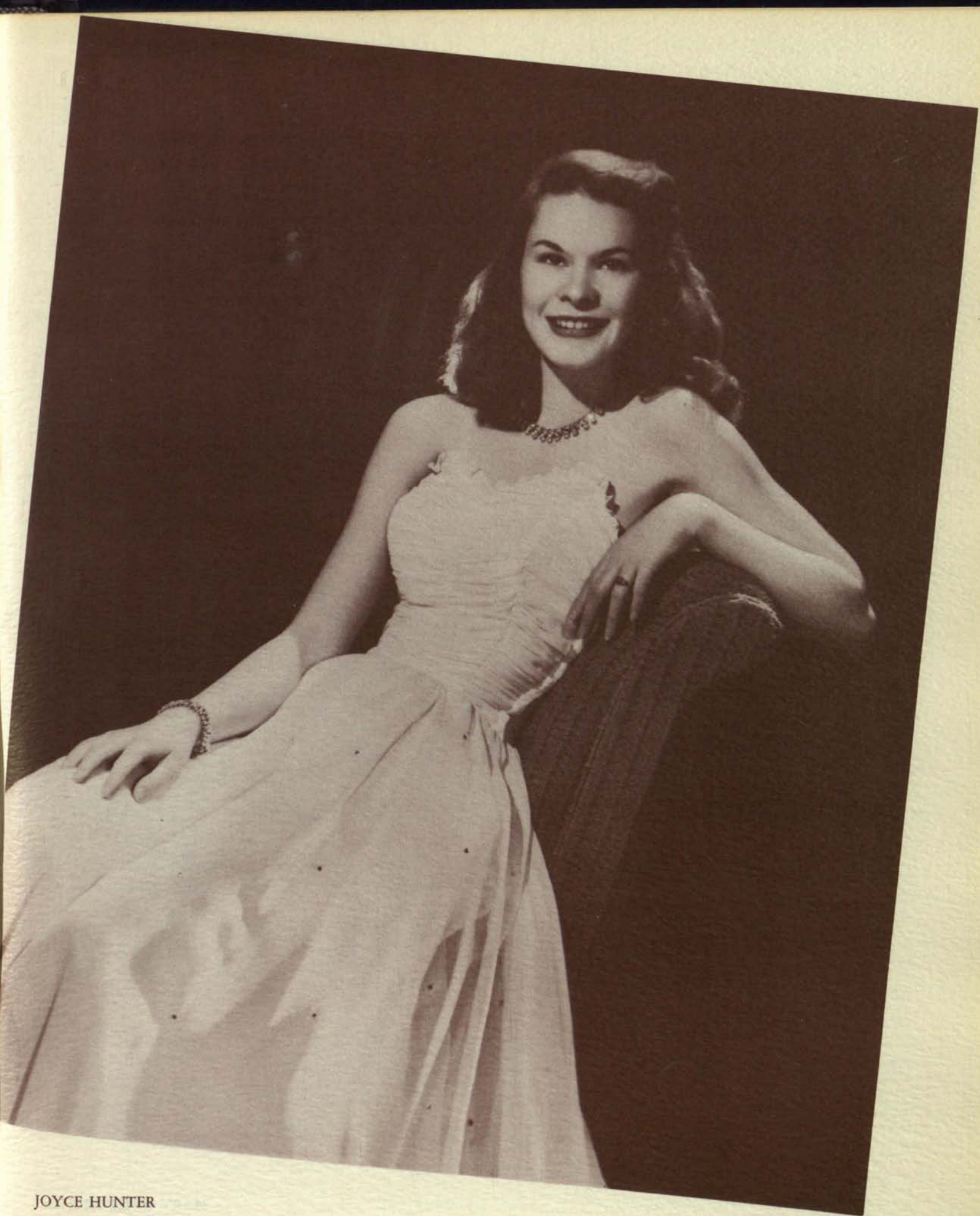


***features***







JOYCE HUNTER

*Most Beautiful Girl*





MARY BETH NICHOLS





PAT MILLIKEN





JEAN BRIDE





MINNIE TRAVIS





JACKIE HALL



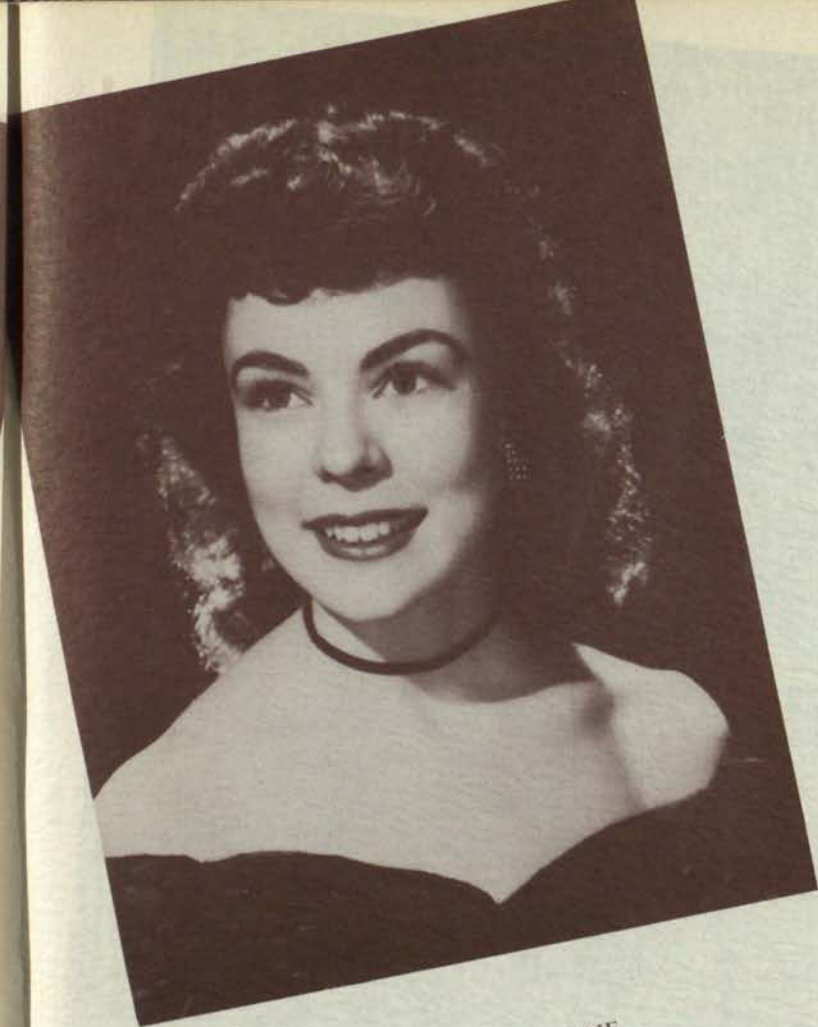
ELLEN LAKE

*Beauty Finalists*

JERRY LAIRD







FRANCES DIVINE



ANITA BROWN

*Beauty Finalists*

BETSY GOODLOE







DICKIE LANDSDOWNE

*Snow Fiesta Queen*





ELAINE LIBBEY

*All Mines Favorite*





JOYCE HUNTER

*Senior Favorite*





BETTY ROSE FRANCIS

*Junior Favorite*





BETSY HOLIK

*Sophomore Favorite*





IRIS ASHTON

*Freshman Favorite*





PAT VESEY



ELAINE LIBBEY

## *Football Duchesses*

PAT MILLIKEN



BOBBIE PRENTISS







FRANCES HOLMSLEY

*Homecoming Queen*





BETTY JAGOE



SARAH JANE STOCKWELL

*Sun Carnival Duchesses*

ELAINE LIBBEY







QUEEN PATRICIA OF THE HOUSE OF MURCHISON

1949 Sun Carnival Queen





BARBARA LUETTICH



BETTY JEAN CASS

*Sun Carnival Princesses*

DOLORES DUNCAN



LA RUE BURCHARD







DIANE HILBURN

*TCM Sun Princess*



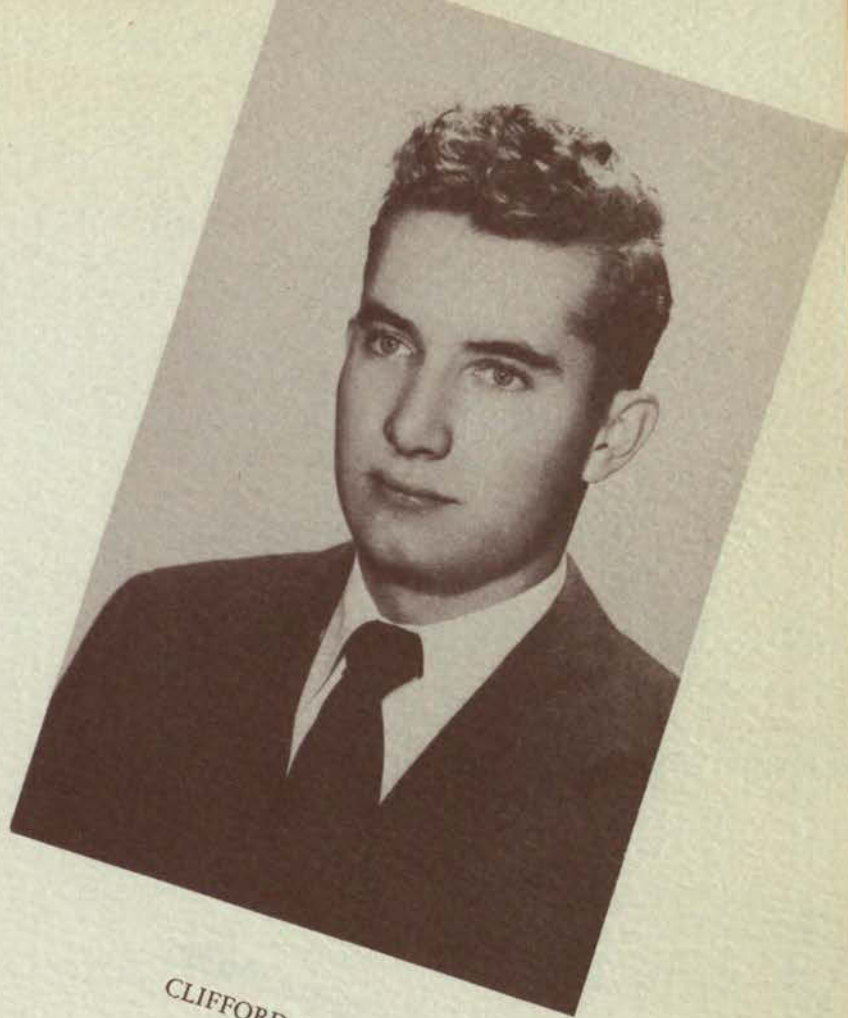


JUDY ARNOLD





WILLIS BEAN



CLIFFORD BRUCE

*Men of Mines*

RAYMOND EVANS







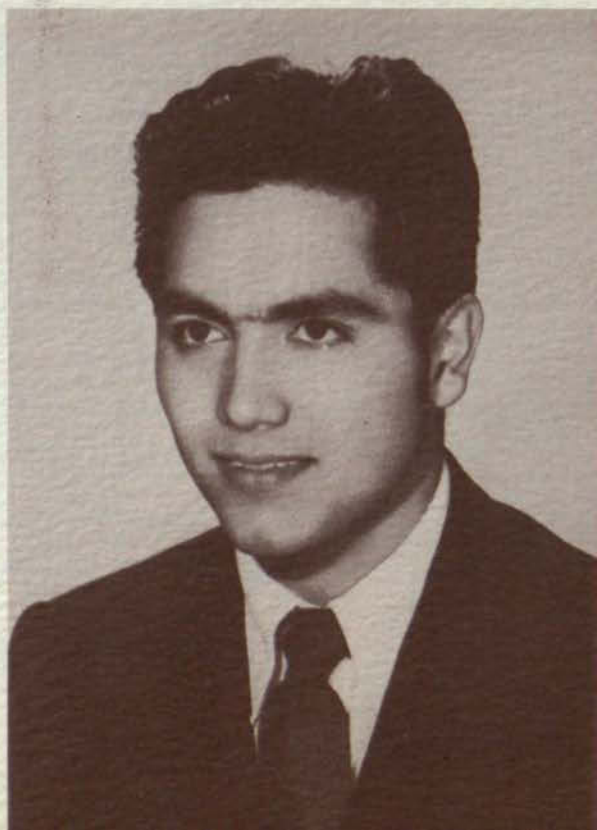
ROBERT FISHER



ROY FISK

*Men of Mines*

GILBERTO GRADO







ROBERT HAMILTON



THEODORE HOWELL

*Men of Mines*

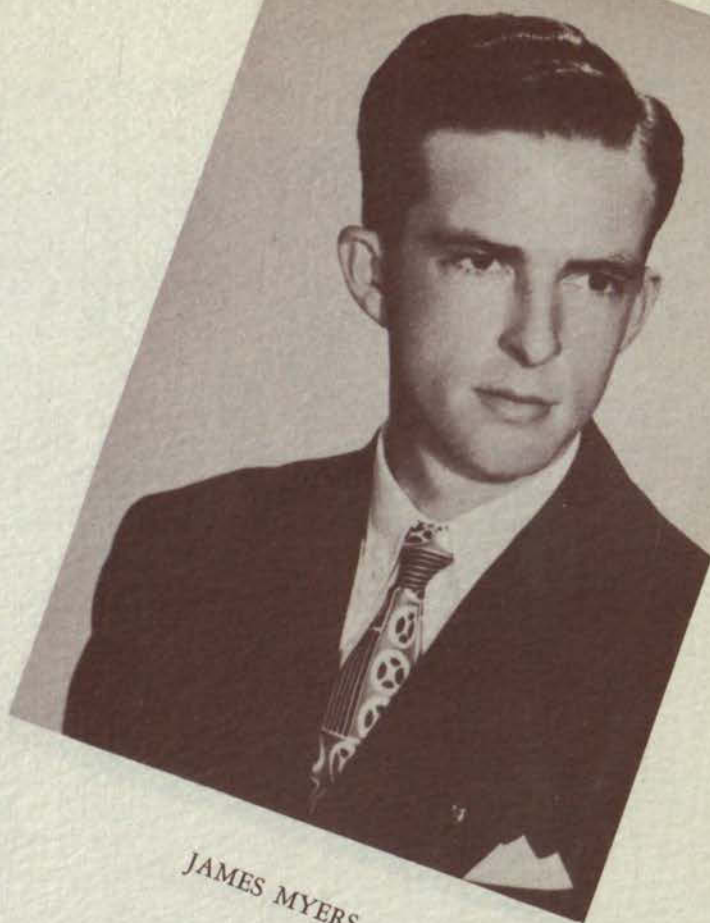
GEORGE KISTENMACHER







RUSSELL MACK



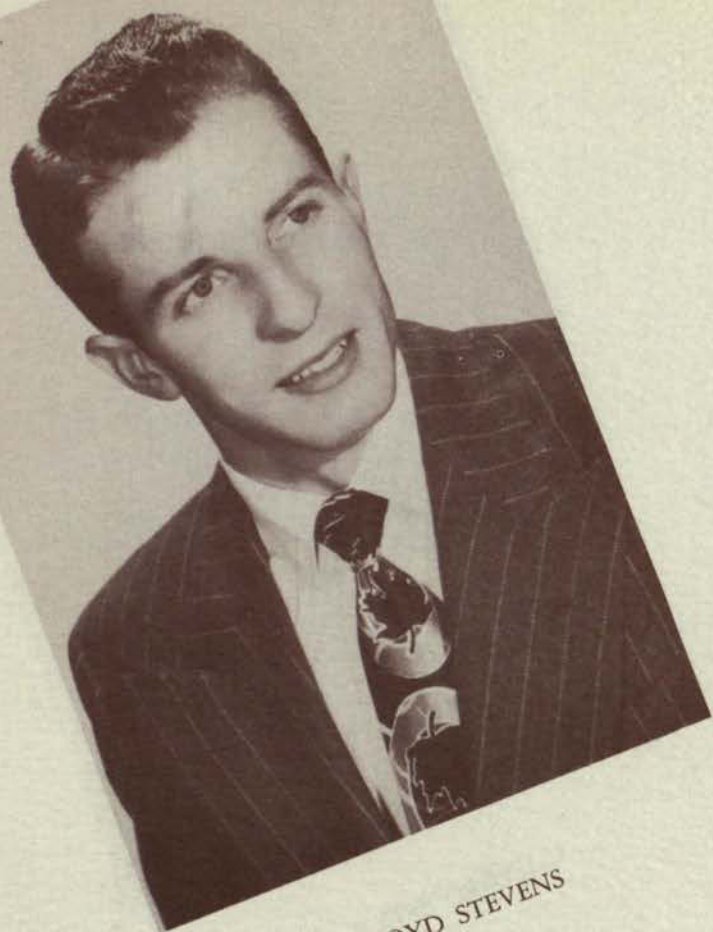
JAMES MYERS

*Men of Mines*

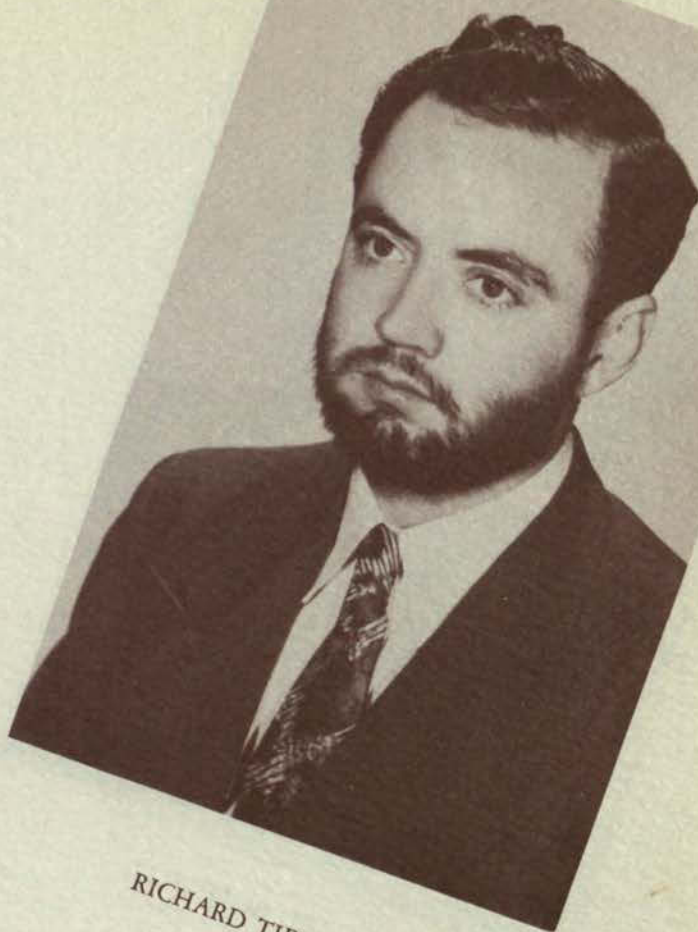
ALONZO SIMS







LLOYD STEVENS



RICHARD TIERNAN

*Men of Mines*

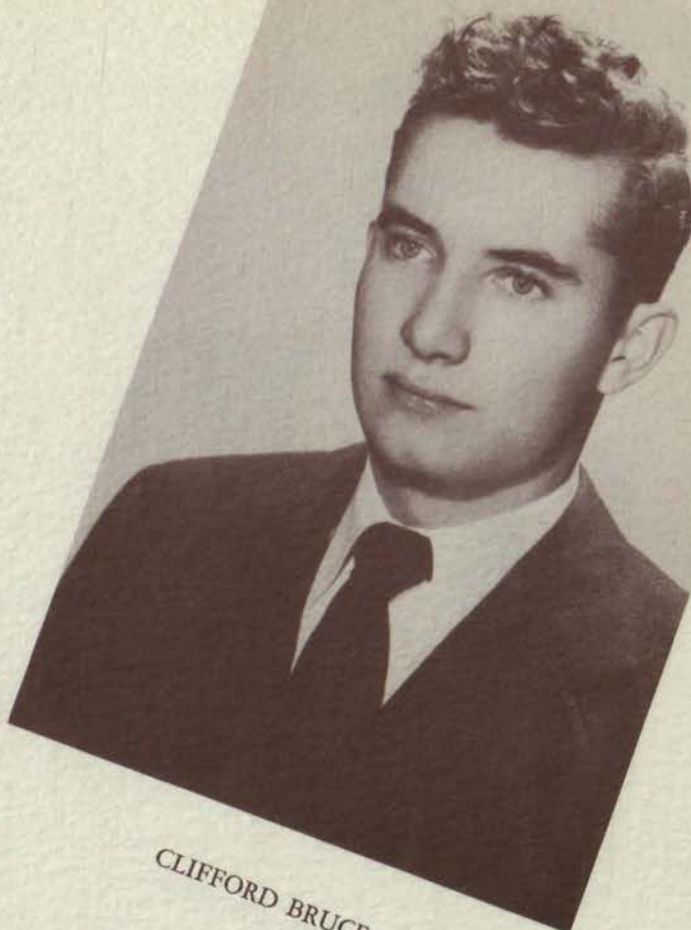
FRED WENDT







NINA LOU BOTHWELL



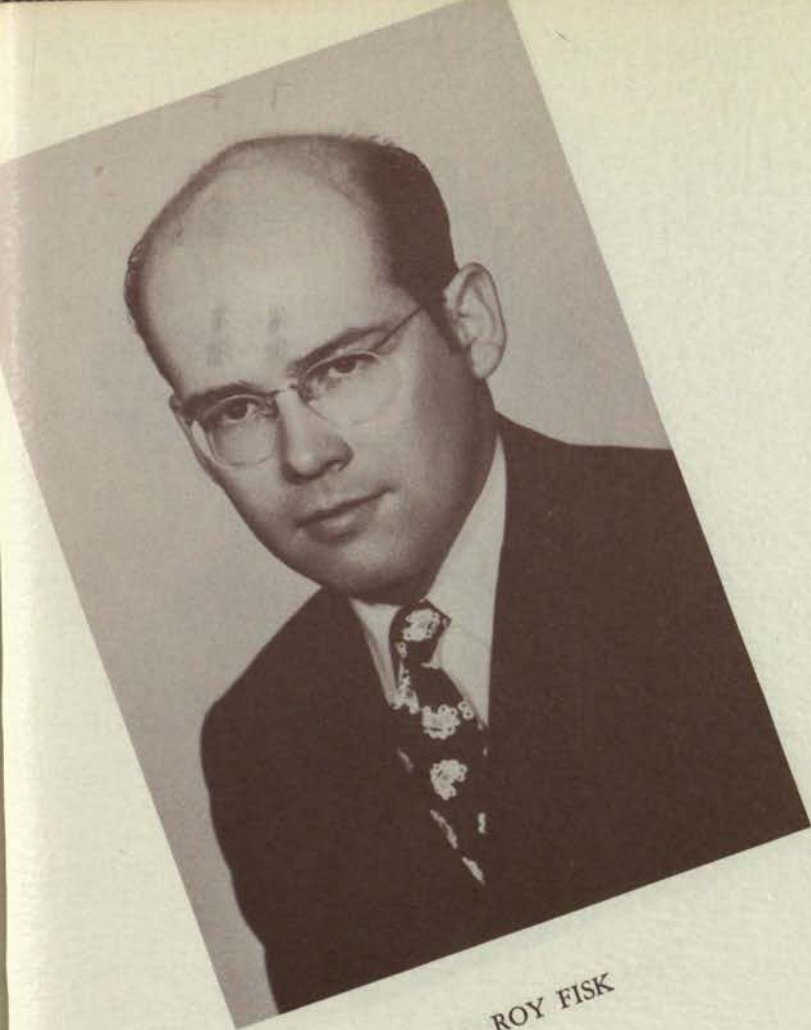
CLIFFORD BRUCE

*Who's Who*

RAYMOND EVANS







ROY FISK



JO FREEMAN

## *Who's Who*

ELMER GROUNDS







ROBERT HAMILTON



STELLA ANNE HESLER

*Who's Who*

GLORIA HOLMES





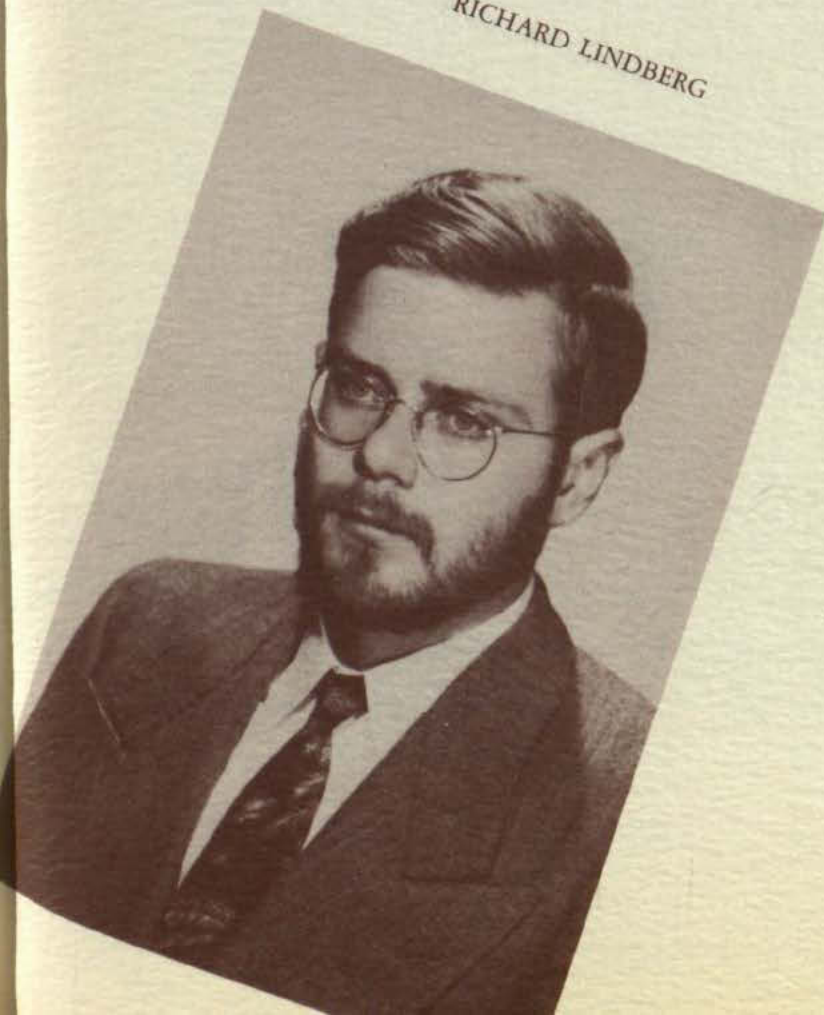


JOYCE HUNTER



GEORGE KISTENMACHER

*Who's Who*



RICHARD LINDBERG



RUTH MERRITT





NANCY MILLER



DELLA PIXLEY

*Who's Who*

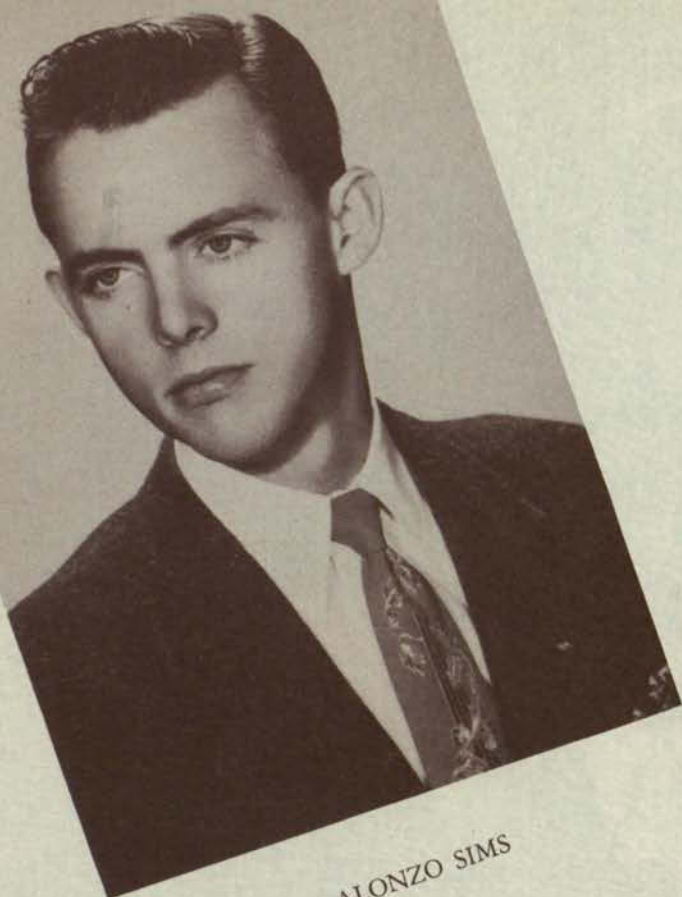
ELIZABETH RHEY



ROBERTO SALAZAR







ALONZO SIMS



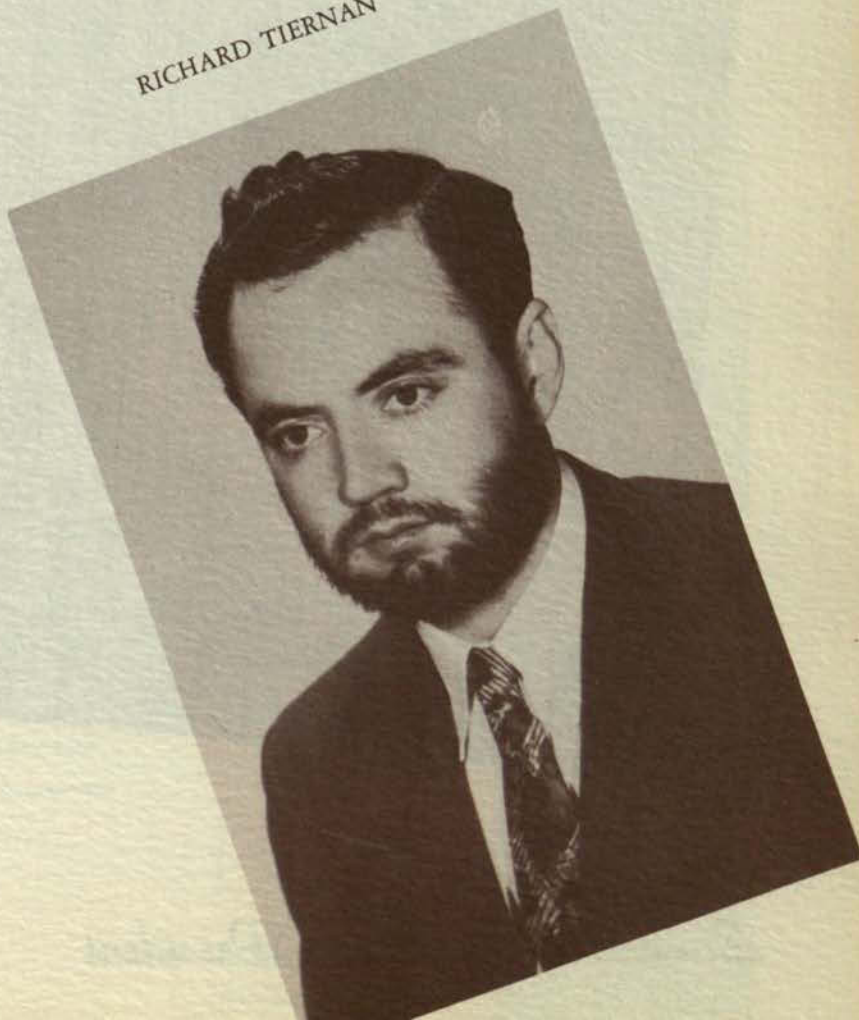
LLOYD STEVENS

*Who's Who*

BEBE TIGHE



RICHARD TIERNAN







RAYMOND EVANS

*Student Association President*



## ***Student Council***



ELAINE LIBBEY  
*Vice-president*



CHARLES McBRIDE  
*Treasurer*



ELIZABETH RHEY  
*Secretary*



BETSY GOODLOE  
JIMMY HAMMOND (Not shown)  
*Academic Representatives at Large*



DICK LINDBERG  
EARL RICHARDS  
*Engineering Representatives at Large*



CLIFFORD BRUCE  
STELLA ANN HESLER  
*Senior Representatives*



ELLEN LAKE  
RAY MAXWELL  
*Junior Representatives*



PAUL BRIESH  
OSCAR ALBRITTON  
*Sophomore Representatives*



BETTY STROUP  
DONNIE OHSWALDT (Not shown)  
*Freshman Representatives*

