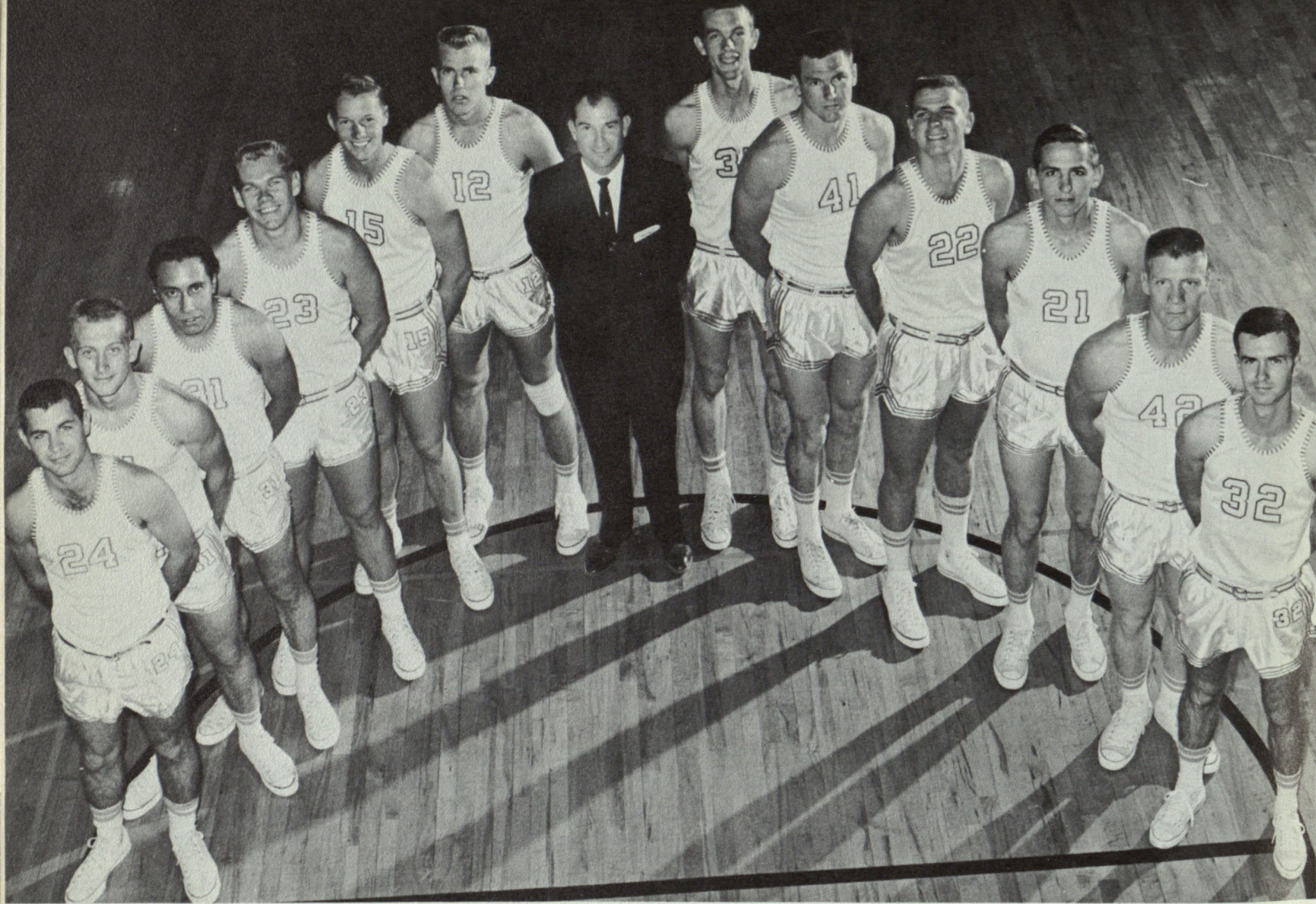


BASKETBALL



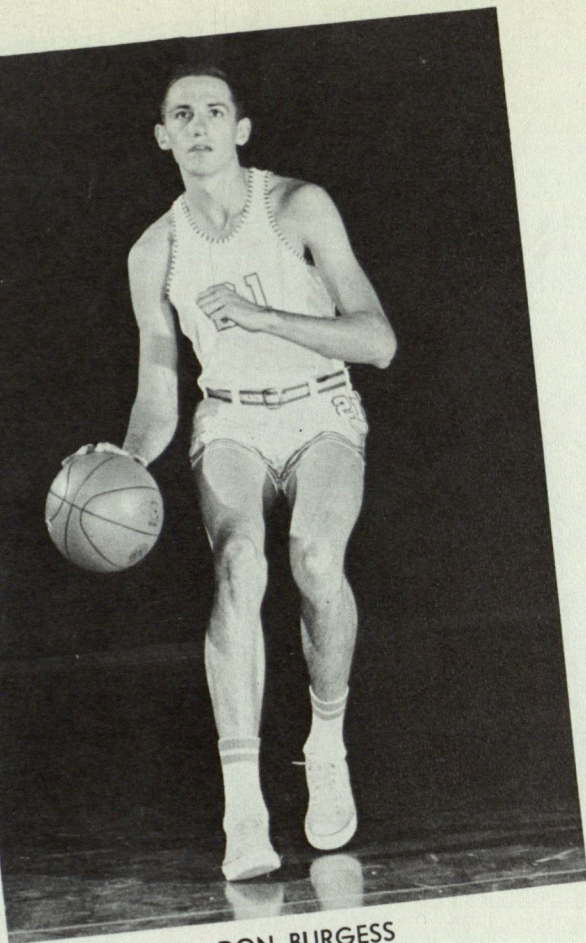
Benny Carver, Al Tolen, Joe Esquivel, John Corcoran, Doug Funk, Matt Turner, Coach Davis, John Gilbert, Bob Davis, Don Vollintine, Don Burgess, Jerry Gilley, and Ronnie Paulk.

TWC BASKETBALL

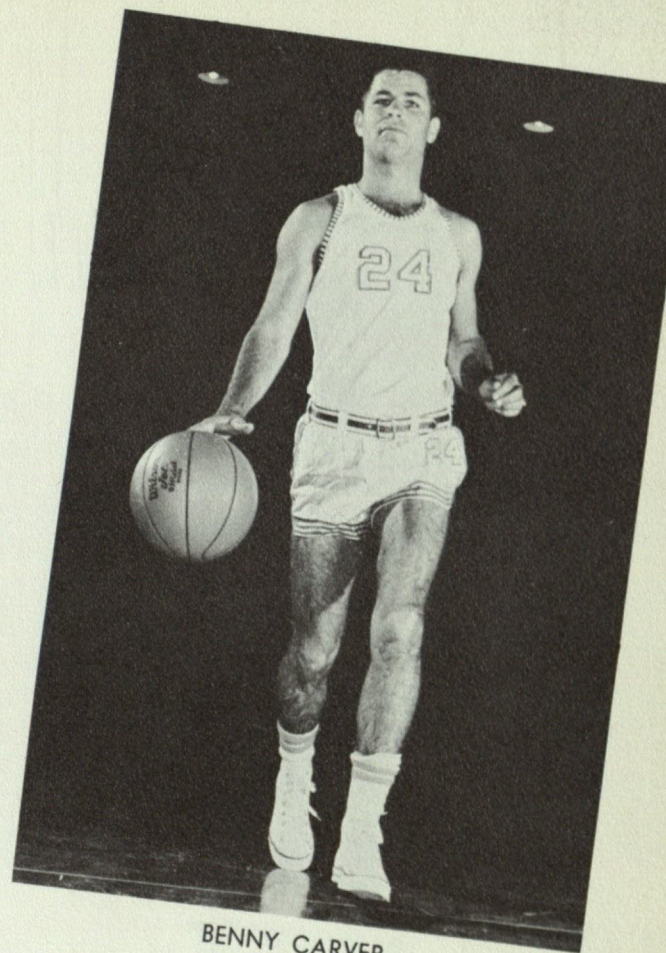
HAROLD
DAVIS



Miner
Basketball
Coach

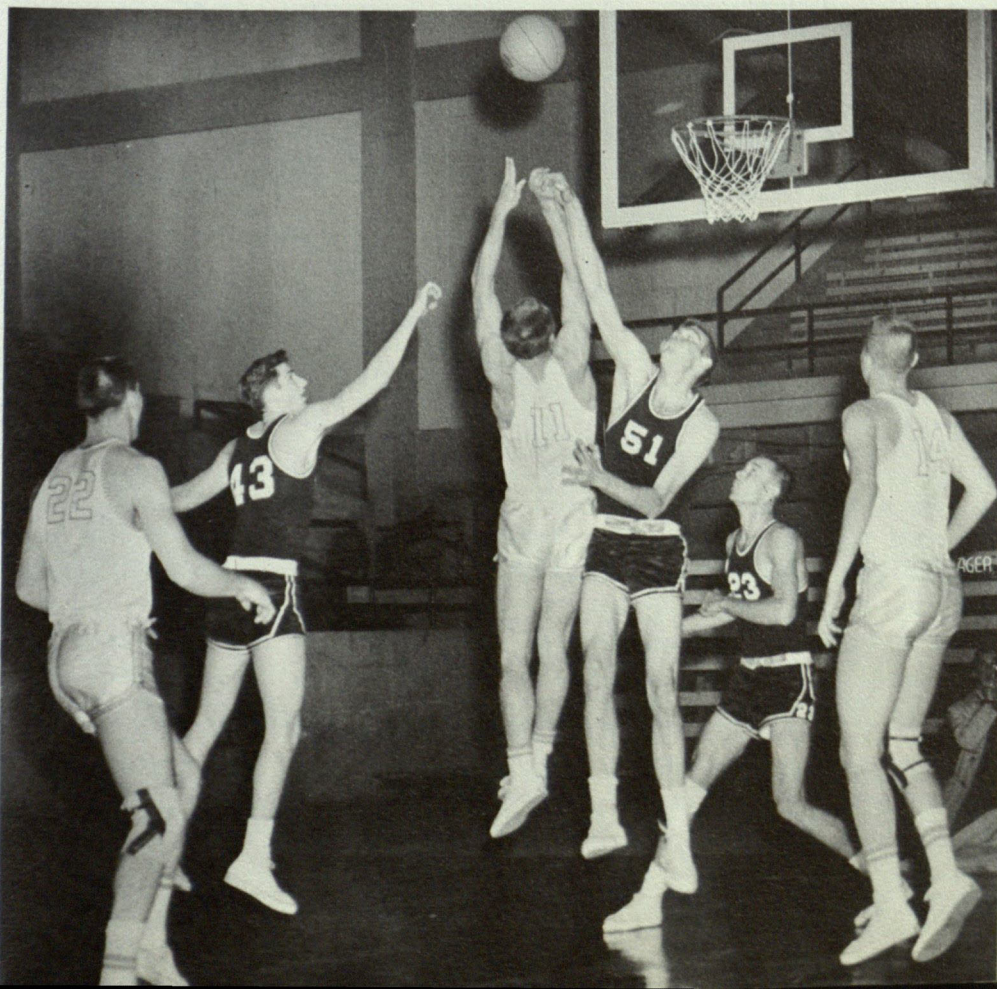


DON BURGESS
Guard



BENNY CARVER
Guard

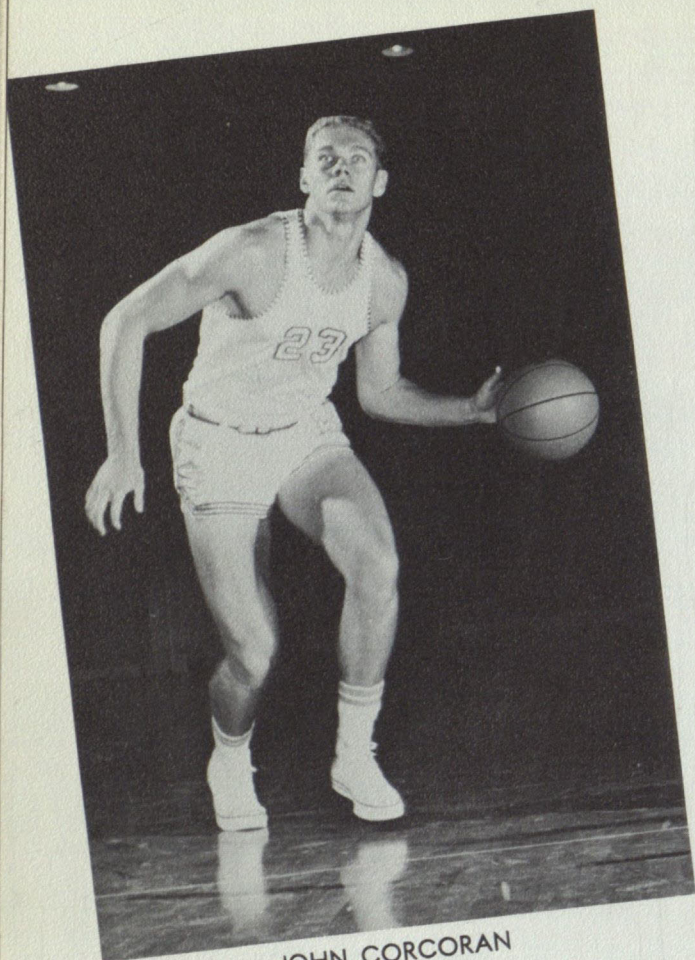
TWC Batters ENMU 90-74



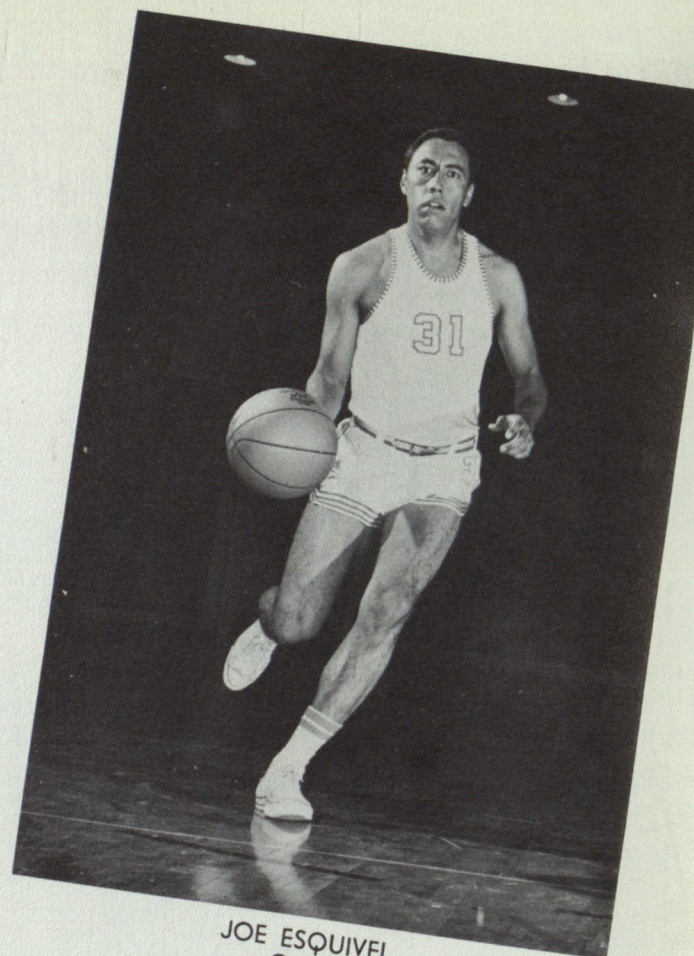
TWC poured it on in one of their fastest paced games, to defeat ENMU for their fifth win of the season. The Miners showed a tremendous speed and scoring touch on the floor as they played one of their highest-scored games of the season.

At left, Al Tolen (11) goes up in a battle for a rebound in the ENMU game. Tolen got the rebound and went on to rack up 31 points for a new individual high count for the season.

Five other Miners hit in the double figures: Don Burgess with 11 points, John Corcoran and Bob Davis with 13 points each, and Don Vollintine with 10 points.



JOHN CORCORAN
Forward-Center



JOE ESQUIVEL
Guard

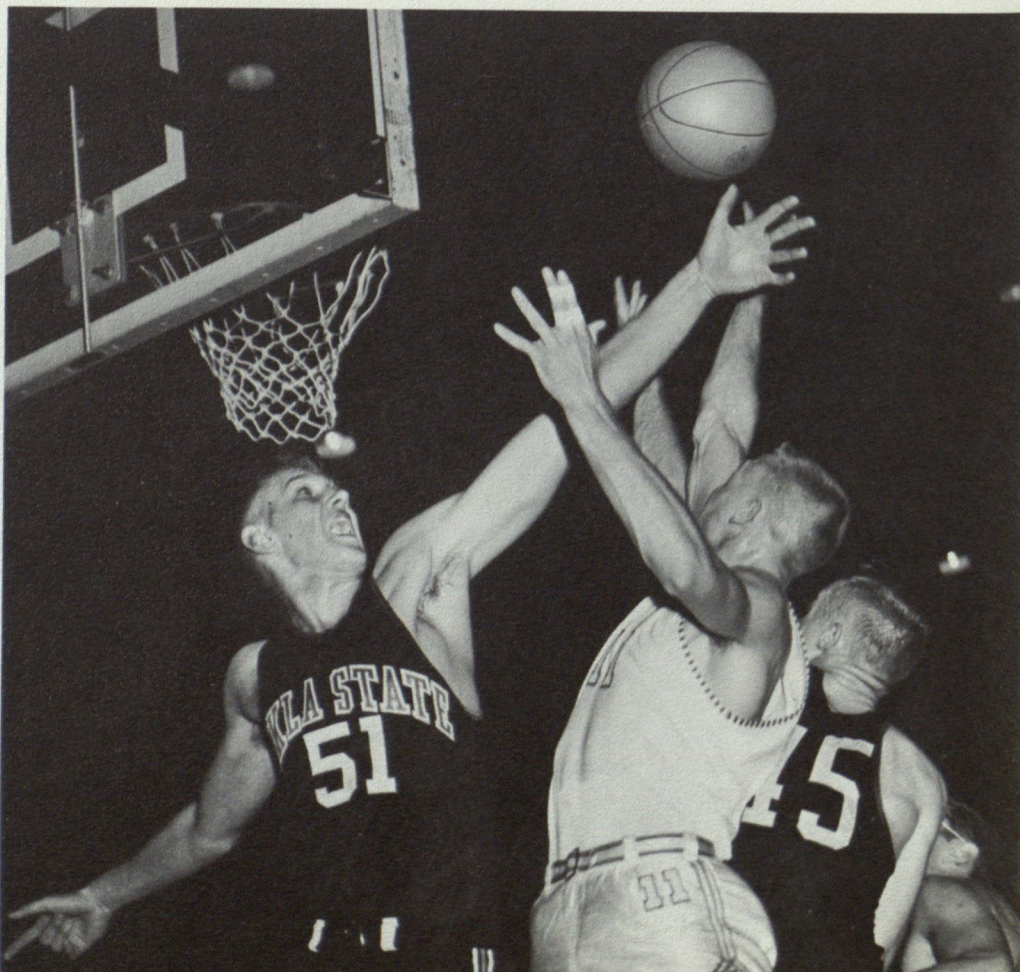
TWC Upset by Oklahoma State by 68-41

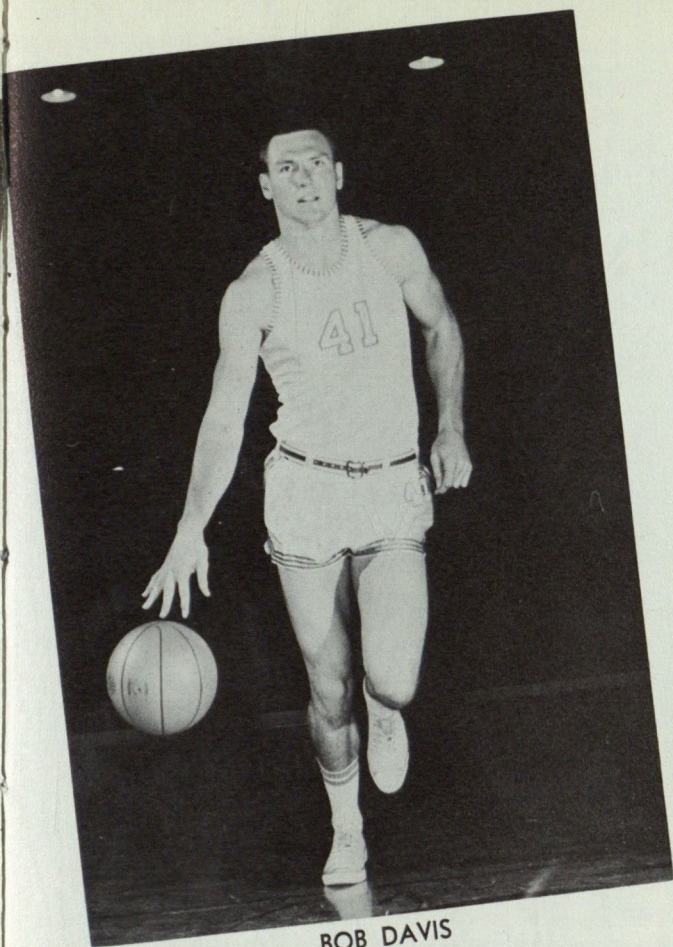
In the Miners' opening game of their home season, they passed to the Aggies who picked up the Miners at the mid-court and took advantage of some bad TWC passes to press their defense home.

The Aggies outshot and outplayed the Miners in the first half, but the Miners rallied in the second half and did far better as they tightened up their defense and changed the pattern of play. The second half score was 29-25, Aggies leading.

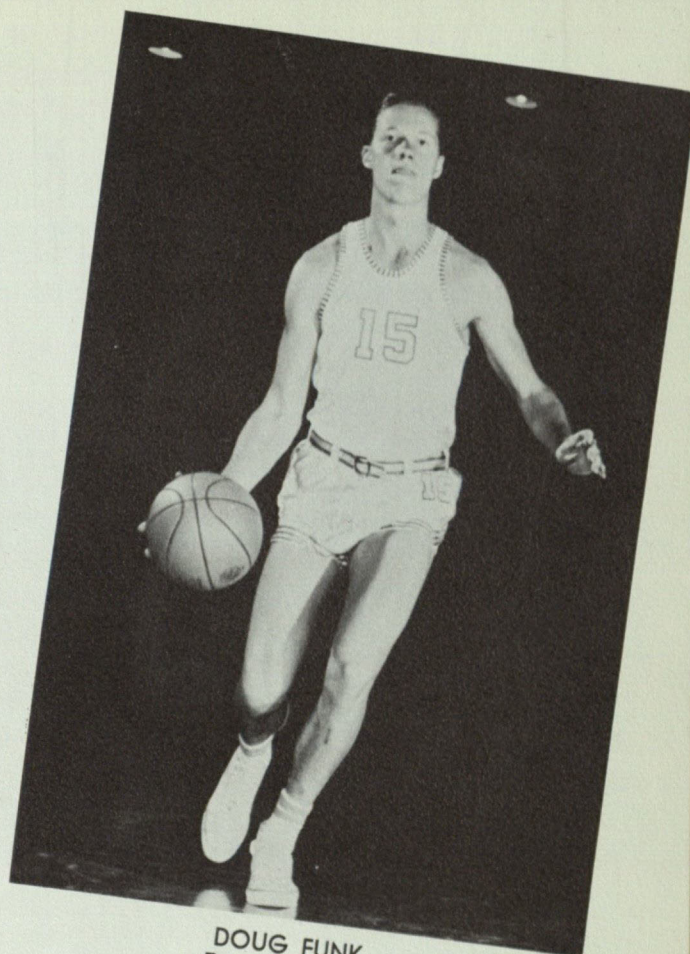
The Miners hit five shots in the field in the first half, and six shots in the second, and twice stole the ball from the Aggies.

Bob Davis led the Miners' scoring men with 14 points, and Al Tolen came up from the field to collect free throws to total 12 points.



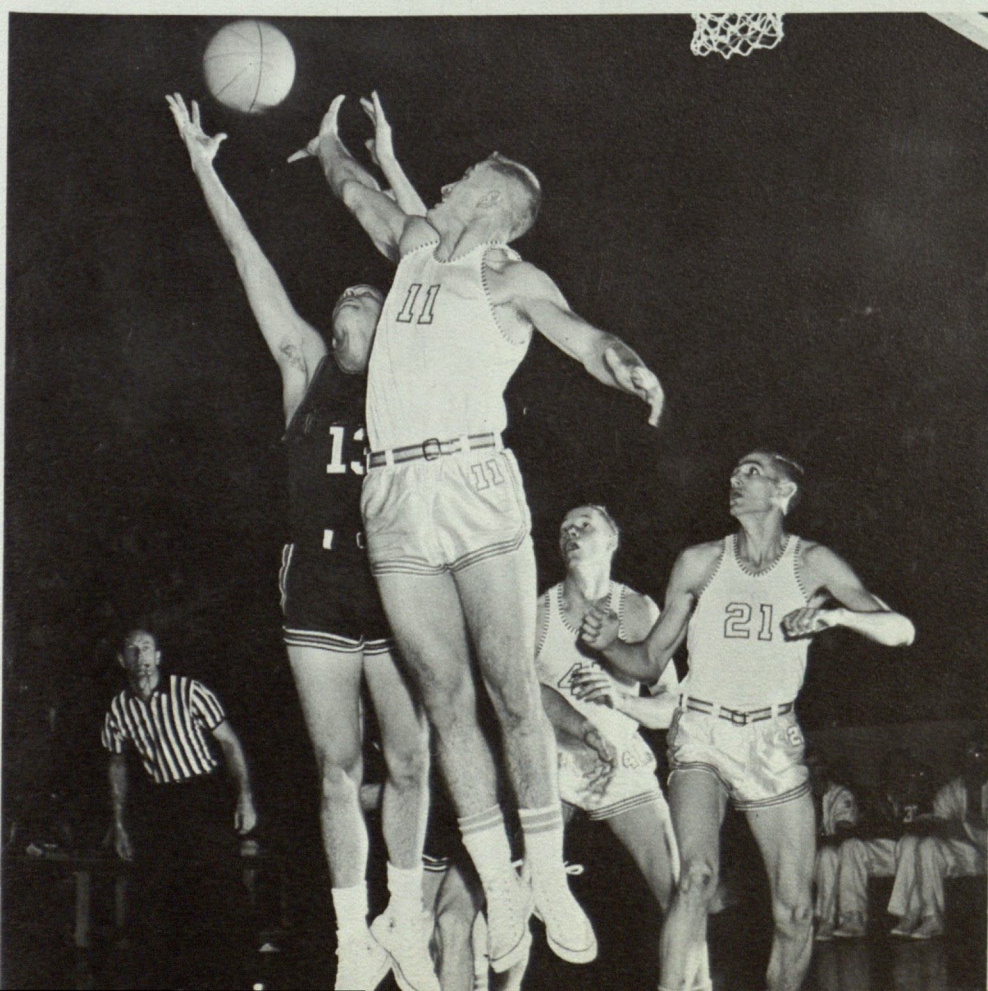


BOB DAVIS
Center



DOUG FUNK
Forward-Center

TWC VS. ABILENE CHRISTIAN

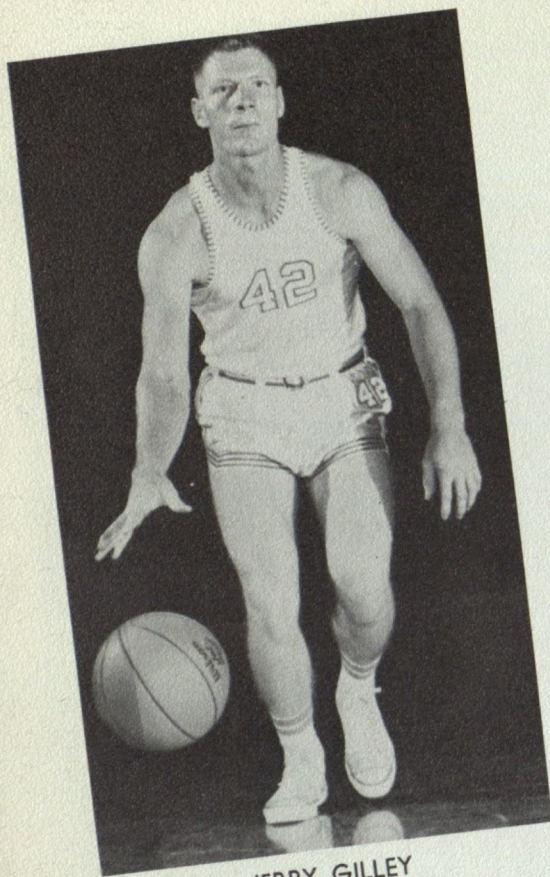


It was a touch-and-go game all the way as the Miners finally tipped over Abilene Christian in over-time to get their victory.

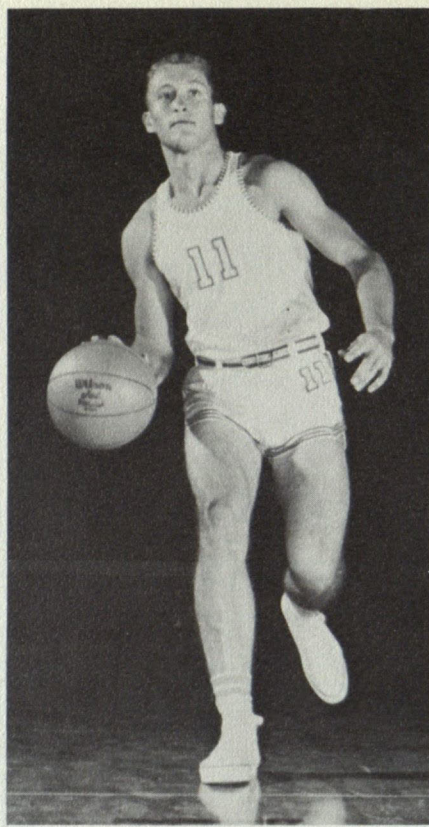
Al Tolen and Benny Carver, guards, headed the Miners in sinking their shots. With just one minute and 21 seconds remaining, and after having fought back from a 10-point deficit, Tolen's layup tied the game for the Miners. Carver twice stole the ball in the over-time session to guide the TWC defense.

Tolen racked up 23 points to lead on the Miner scoring board. Bob Davis scored high with 19 points and Don Vollintine came up close with 14 points.

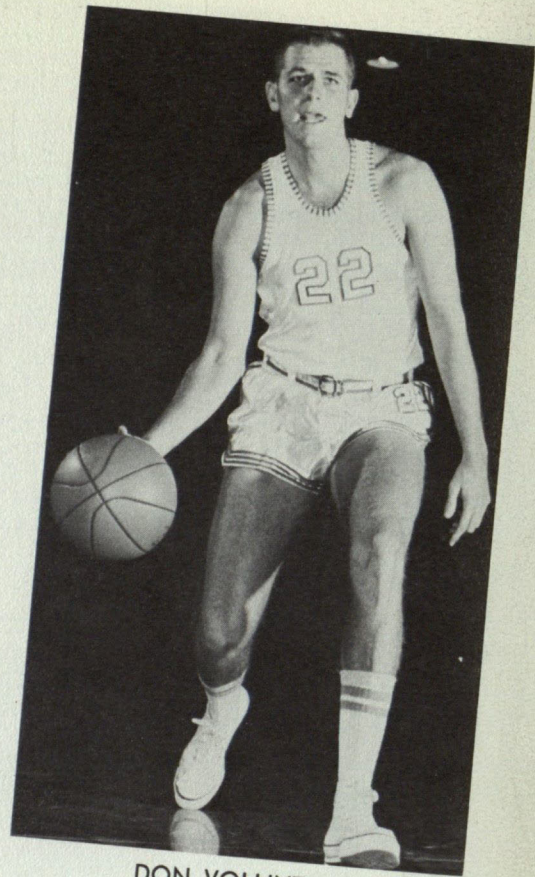
(Photos by Photographic Associates)



JERRY GILLEY
Guard



AL TOLEN
Guard



DON VOLLINTINE
Forward-Center

T W C B A S K E T B A L L



John Corcoran and Bob Davis, Miner starters, give a hand to 5-year-old David Cervantes, polio patient, who is learning something to look forward to in his later years.

(Photos by Photographic Associates)