

We view with interest the line separating the Engineering Department from the rest of the campus. We know the college as originally founded was called Texas College of Mines. Today modern equipment and experienced professors turn out some of the finest engineers in the nation.





## *Engineering*





YSELA PORRAS  
Engineering Queen



BERTHA MUNOZ  
Engineering Duchess



BONNIE TOMAN  
Engineering Duchess

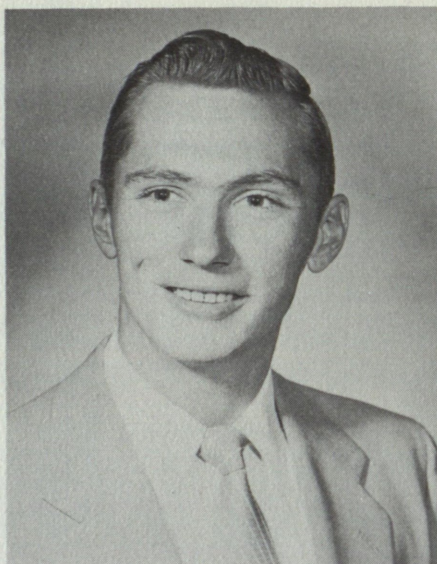


Not Pictured, Peggy Disselkoen





WILLIAM BUNELL  
President  
Electrical Engineer

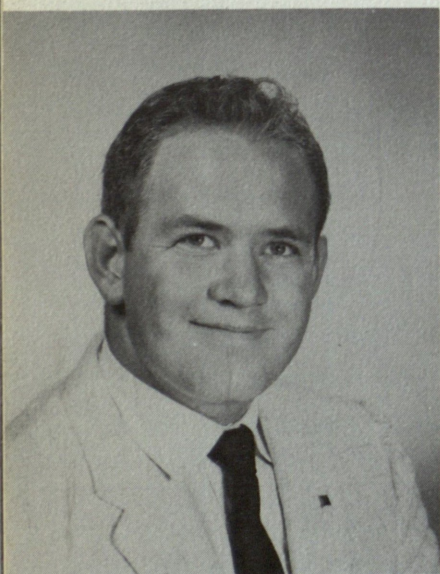


JAMES CHAMNESS  
Treasurer  
Mining Engineer



WILLIAM GANDARA  
Secretary  
Civil Engineer

## *Engineering Council*



LARK MURRY  
Electrical Engineer



GILBERT RODRIGUEZ  
Mining Engineer



ROBERT VILLARREAL  
Civil Engineer





Row 1: Larry Poagh, Jim Patterson, Jack Burgess.

Row 2: Gilbert Rodriguez, Joe Mussey, Caesar Fulton, Jim Mock, Jack Heiden, Herb Holland, Dick Jones, Charlie Mathers.

Row 3: Martin Bustamante, Dan Boyd, Cabell Finch, Bob Garner, Gerald Price, Bill Nash.

## *Sigma Gamma Epsilon*

### OFFICERS:

Herb Holland, President; Jim Mock, Vice President; Bill Nash, Secretary; Gilbert Rodriguez, Treasurer.

The Alpha Lambda Chapter of Sigma Gamma Epsilon, national professional fraternity for students of the earth sciences, was installed at Texas Western in 1940. Qualification for membership requires an above average scholastic record and the presentation of a technical paper. The fraternity works towards a closer interest in the allied fields of geology, mining, metallurgy, and petroleum engineering.





Row 1: R. Ellison, W. Gandara, H. Sambrano, E. Babenco, A. Alvarez, B. Adorns, B. Sanders.

Row 2: Mr. Harry H. Corbett, Senior Charter Contact, R. Villarreal, W. Hiler, R. Sotelo, L. Garcia, A. Alvarez, H. Holguin, C. Overton, J. Esparza, Mr. Paul Hassler, Sponsor.

Row 3: F. Cruz-Aido, B. Castro, T. Mlton, L. DePanfilis, A. Lugo, Mr. Young, I. Ruiz, W. Jarmmon.

## *American Society of Civil Engineers*

### OFFICERS :

President Arturo Alvarez  
 Vice-President Hector Holguin  
 Secretary Humberto Sambrano  
 Treasurer Guillermo Licon  
 Sponsor, Mr. Paul C. Hassler, Jr.

The Texas Western Chapter of the American Society of Civil Engineers was established in 1948 by a group of twelve men. Eligibility for membership requires a major of Civil Engineering with a standing of sophomore or above. The chapter acquaints students with one and other, introduces them to topics of interest in civil engineering, and fosters development of a professional spirit.





Row 1: R. Fernandez, R. Olivas, K. Johnson, W. Bernard, J. Kellen, P. Ward, G. Gino, L. Varela, J. Creamer, T. Arellanes, J. Bourquin.  
 Row 2: L. Hamilton, H. Gschwind, L. Murray, R. Berry, A. Dugan, P. Rodriguez, D. Williamson, B. Munoz, Y. Porras, Mr. Gomez, J. Baughman, R. Gandara, J. Ogaz, P. Harris, T. Salas.  
 Row 3: J. Bettle, R. Rios, J. Gonzales, E. Rocha, E. Staeps, J. Marshall, N. Eiting, G. Martch, A. Norte, R. Olivas, F. Delgadillo, P. Ramirez, R. de la Fuente, R. Portillo, R. Gonzales, A. Martinez, A. Murillo.  
 Row 4: C. Cagle, R. Fuentes, R. Lopez, W. Foy, A. Borrego, C. Higgins, J. Ellenbergher, A. Parra, A. Napoles, J. Montez, S. McCallick, H. Feinberg, J. Mann, D. Moore, B. Bruce, W. Bunnell.

## *American Institute of Electrical Engineers*

### OFFICERS:

Jack Baughman President  
 Pat Dugan Vice President  
 George Gino Secretary  
 Jerry Kellen Treasurer  
 Juan Ogaz Reporter  
 Mr. Gomez Sponsor

The student chapter of the American Institute of Electrical Engineers, established in 1948 encourages the advancement of electrical engineers in the fields of theory and practice, together with allied arts and sciences, development of individual engineers and participation in inspection trips to places of engineering interest.





Row 1: G. Rodriguez, J. Mock, D. Gipson, C. Fulton, E. Escalante, T. Lapko, R. Limo, J. Armijo.  
 Row 2: Dr. J. C. Rintelen, sponsor, J. McDonald, G. Palau, J. Chorne, S. Morrison, R. Garner, O. Echevarria, A. Korus.  
 Row 3: A. De La Rosa, R. Carlisle, C. Navarette, C. Hornado, P. Moore, F. Mauldin, F. Shunk, M. McKenzie, W. Stricklin, W. Gibson, C. Finch.  
 Row 4: O. Gonzales, E. Chavez, M. Bustamente, R. Bardsley, R. Montgomery, C. Mathews, D. Boyd, H. Stahl.

## *American Institute of Mining and Metallurgical Engineers*

### OFFICERS:

Dan Boyd President  
 Bob Garner Vice President  
 Caesar Fulton Treasurer  
 Juan Chorne Secretary  
 Dr. J. C. Rintelen Sponsor

The Texas Western Chapter of the American Institute of Mining and Metallurgical Engineers was established in 1915 as the American Institute of Mining. It became a part of A.I.M.E. in 1944. The chapter encourages interest in various sciences and promotes fellowship between professional men and students.





Low Bridge.

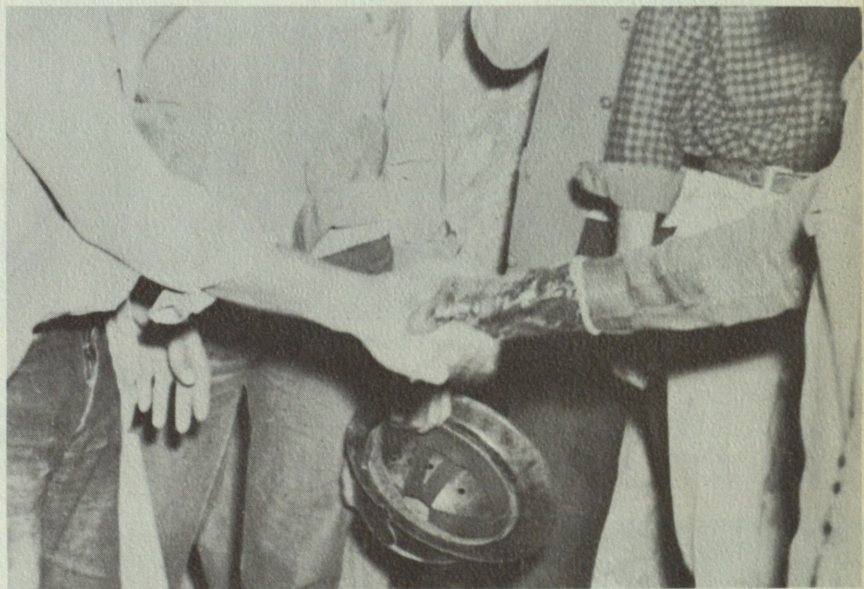


This used to be the ritual for miners.

## THE MINES CEREMONY OF YEARS AGO



"Ouch!"



An Engineer at last!

"Kiss the Blarney Stone or get another whack."





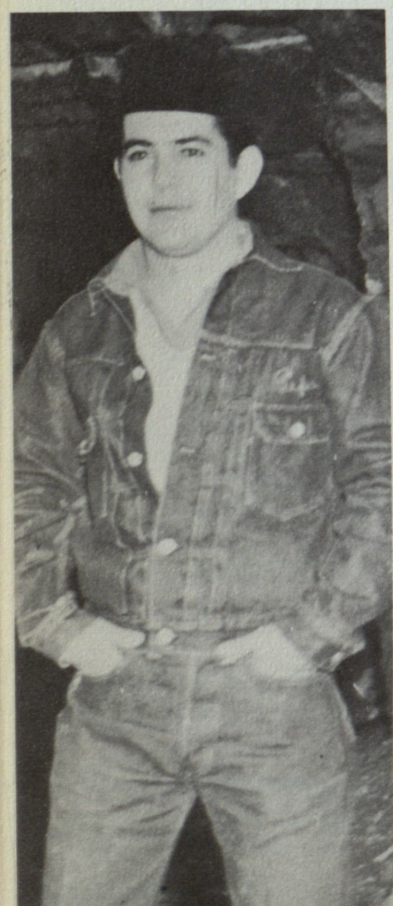


An engineer drills holes for the dynamite which rocked the campus on St. Patrick's Day.

"He's confident the blast will occur on time."

Dynamite takes a lot of packing.

"Thar She Blows"







Bob Garner steps up to take his award for beard growing.



Part of the ceremonies which surround the St. Patrick's Day week-end is the annual beard growing contest. This year, a new record was established when Joe Mussey won the contest for the longest and fullest beard for the third year in succession.

JOE MUSSEY  
Champion of the Beard