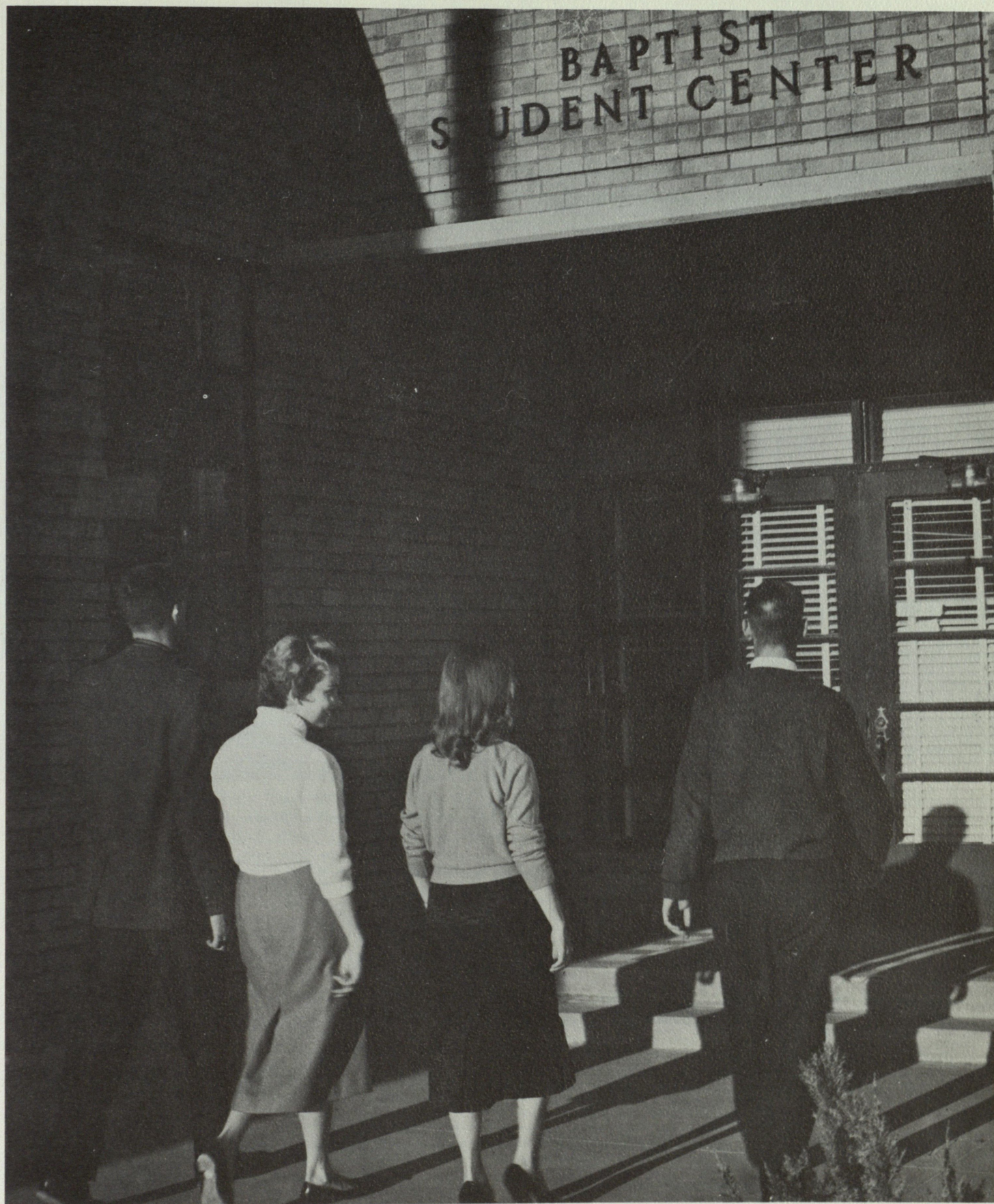


Realizing that most students support their own religious beliefs for life, many organizations are established on campus for the furtherance of these beliefs. These organizations open their doors to new people hoping to make them feel more at ease and at home on our campus. They have a council of all faiths which works towards the success of an annual Religion in Life Week program.



Religious



Kneeling: Ornell. Neil, Sarah Cooney, Della Haddad, Jane Holmberg, Cynthia Witherspoon, and Thelma Williams.

Sitting: Sue Ann Billman, Mary Douglas, Mrs. J. C. Vowell, Hilda Minjares, Espie Soto.

Standing: Roy Gibson, Bob Prensky, Jerry Stewart, Walter Willis, and Dan Boyd.

Inter-Faith Council

OFFICERS:

ChairmanJERRY STEWART
Sponsors.....MRS. J. C. VOWELL and MR. THOMAS M. CHISM

The Inter-Faith Council was organized in the spring of 1954, for the purpose of presenting an annual Religion in Life Week Program to the student body. The Council is composed of members of the three major faiths on campus. Its chairman serves as student director of Religion in Life Week. Religion in Life Week Activities include assemblies, classroom visitations, conferences, and discussions with students by the visiting speakers.



Row 1: Cynthia Witherspoon, Peggy McClendon, Cherie Dusseau, Carolyn McGrew, Eleanor Robbin, Ione Lusk, Frances Holmes.
 Row 2: Karl Perry, Evelyn Imle, Carmen Okeson, Don Johnson, Marci Scott, Elaine Hanna, Forrest Wylie.
 Row 3: Gene Boswell, Orlando Garza, John Sherman, Bob Maxwell and Jim Hill.

Wesley Foundation

OFFICERS:

President CYNTHIA WITHERSPOON
 Vice President JACK BURGESS
 Secretary MARCI SCOTT
 Treasurer BOB PRYOR

Faith PEGGY McCLENDON
 Publicity NORMAN PEYTON and
 CARMEN OKESON
 Director FORREST WYLIE

The Wesley Foundation at T.W.C. is a part of the world-wide Methodist Student Movement. It was organized in the spring of 1953 and reorganized in 1956. Plans are being made for a Wesley House and a full-time director of religious education.



Seated: Suzanne Darroh, Erma Clark, Mary Ann Kennedy, Madeline Willis.
 Standing: Tom Chism, John English, Bob Donohue, John Prince, Al Tucker, Roy Gibson.

Baptist Student Union Executive Council

OFFICERS:

MARY ANN KENNEDY President
 ERMA CLARK Vice President
 MADELINE WILLIS Secretary
 JOHN ENGLISH B.S.U. Chairman
 JOHN PRINCE Devotional Chairman

BOB DONOHUE Publicity Chairman
 ROY GIBSON Missions Chairman
 TOM CHISM Student Director

The Baptist Student Union, organized in 1941 furnishes a connecting link between the local Baptist Church and the campus community. The Union endeavors to promote religious growth and spiritual development of the student. The Union center was built in 1949, the first permanent type student center. Parties, retreats, and Bible study are only a few of the activities of the B.S.U.



Students enjoy High Fidelity music at the B.S.U.

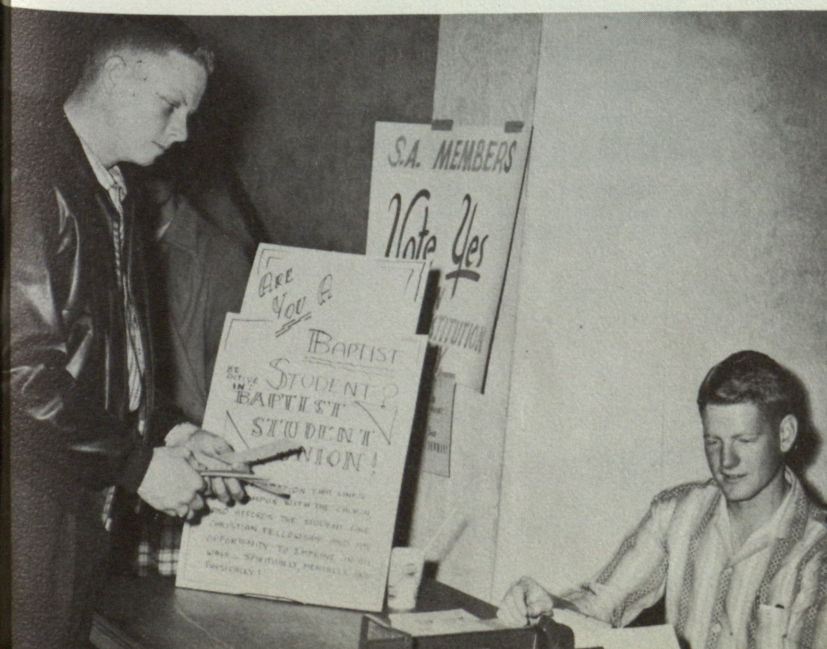


John Prince leads the singing at a noon inspiration meeting.



Ping-pong takes in any player at the B.S.U.

Members of the B.S.U. try to encourage new students during registration.



Fellowship





Kneeling: Adan Lopez, Richard Ontiveros, Richard Loya, Amy Mendez, John D. Douglas, Victor Peña, Rene Vela, Chito Calderon, Ruben Vela, and Father Burke.

Sitting: Ramon Piñon, Jack Fuller, Richard Olivas, Leo Gonzales, Victor Young, Armando Garcia, Otto Telles, Salvador Velasquez, Salvador Varela, Charles Horky, and Richard Gonzales.

Standing: Arthur Napoles, Graciela Islas, Norma Martinez, Hilda Minjares, Belia Baca, Mary Helen Moreno, Alicia Armenta, Yvonne Veale, Marguerite Loya, Emmy Knotts, and Richard Patton.

Newman Club

OFFICERS:

President	J. D. DOUGLAS
Vice President	ESPIE SOTO
Corresponding Secretary	SOLEDAD SAMBRANO
Recording Secretary	AMY MENDEZ
Treasurer	VIC PEÑA
Historian	RENE VELA

The Newman Club, one of the largest religious organizations on campus, serves as a religious, social and athletic organization for Catholic students. The club members participate in sponsoring various benefit projects, outings, intramural sports, an annual pilgrimage to Mt. Cristo Rey, and two dances yearly.



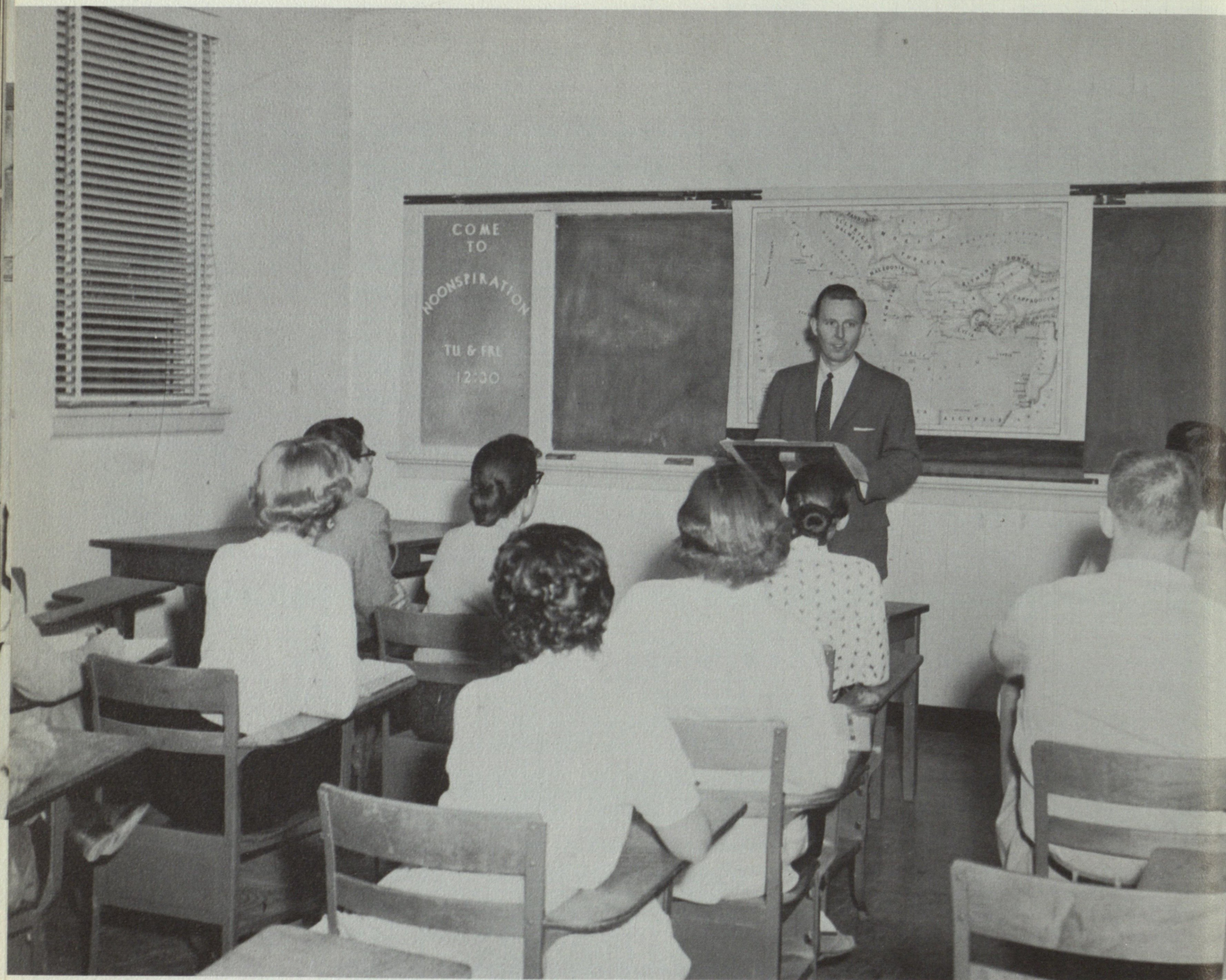
Princess Amy Mendez and her
escort Orlando Cervantes.



MISS ESPIE SOTO
Cardinal Ball Queen, 1957-1958

Espie Soto is crowned as Lady-
in-Waiting, Yolanda Porras looks
on.





Religion is taught by Mr. Tom Chism at the Baptist Student Center.



Pastor Herbert Wolfe, the main speaker of Religion in Life Week.