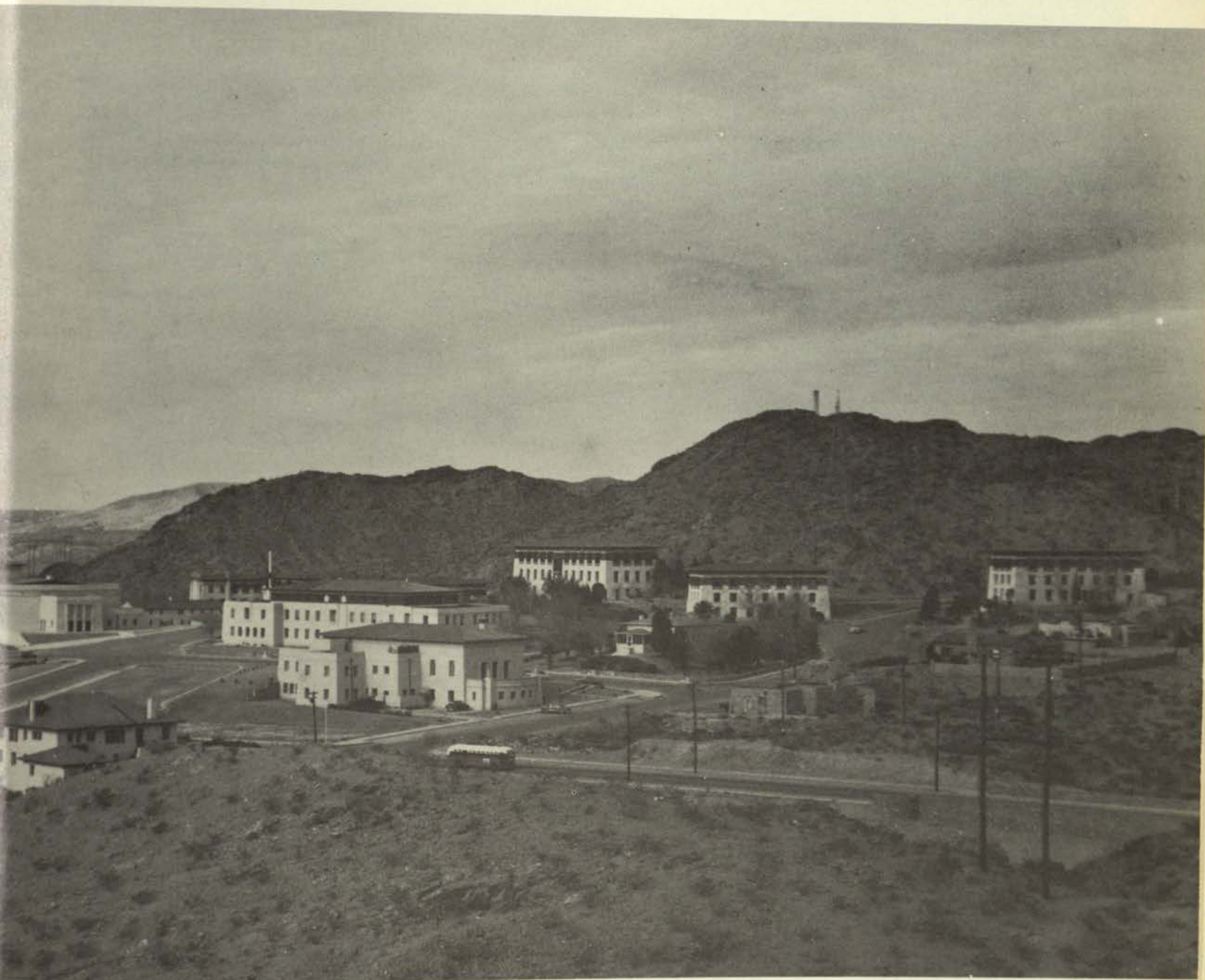


# CAMPUS



ARCHITECTURE OF TEXAS WESTERN presents a spectacle both unique and beautiful. Only in the mountains of far - away Tibet can counterparts of this architecture be found. Angular lines, sweeping, overhanging roofs, and rugged simplicity give campus buildings a beauty which fits into and flatters the rugged hills and terrain of the campus. Years of care by landscapers and gardeners have produced beautiful, rolling lawns in the andesitic soil. Buildings reflect the growth of Texas Western. Old Main, Kelly Hall, Burges Hall, and Seamon Hall were among the first. Later

# PANORAMA



buildings reflect a modification of the rugged simplicity of architecture, with the Centennial Museum, Engineering Building, Benedict and Worrell Hall in this era. A new era was introduced with the building of Administration, and the postwar building continued with the elaborate ornamentation. Bell Hall, Hudspeth, Miner Hall, Cotton Memorial, Student Union Building, and finally the Science Building and Magoffin Auditorium complete the cycle. Tradition and utility are bound together in each building, and the complete picture is one beauty unique in this hemisphere.



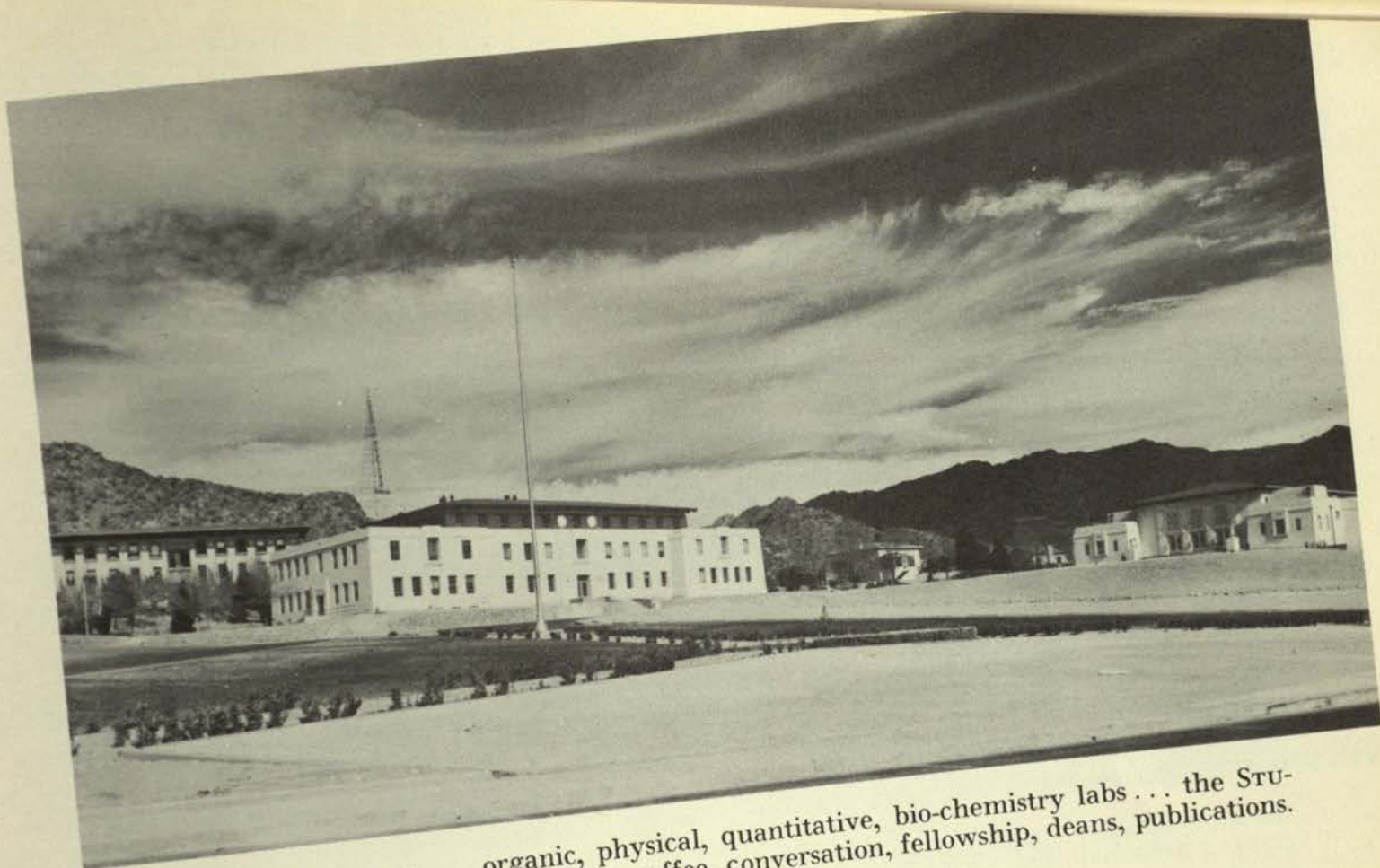


ADMINISTRATION BUILDING . . . the registrar, president, dean, business office, LIBRARY upstairs . . . Shakespeare to Shulman . . . MAGOFFIN AUDITORIUM, pride of the campus . . . College Players, jazz and Liszt, movies productions.

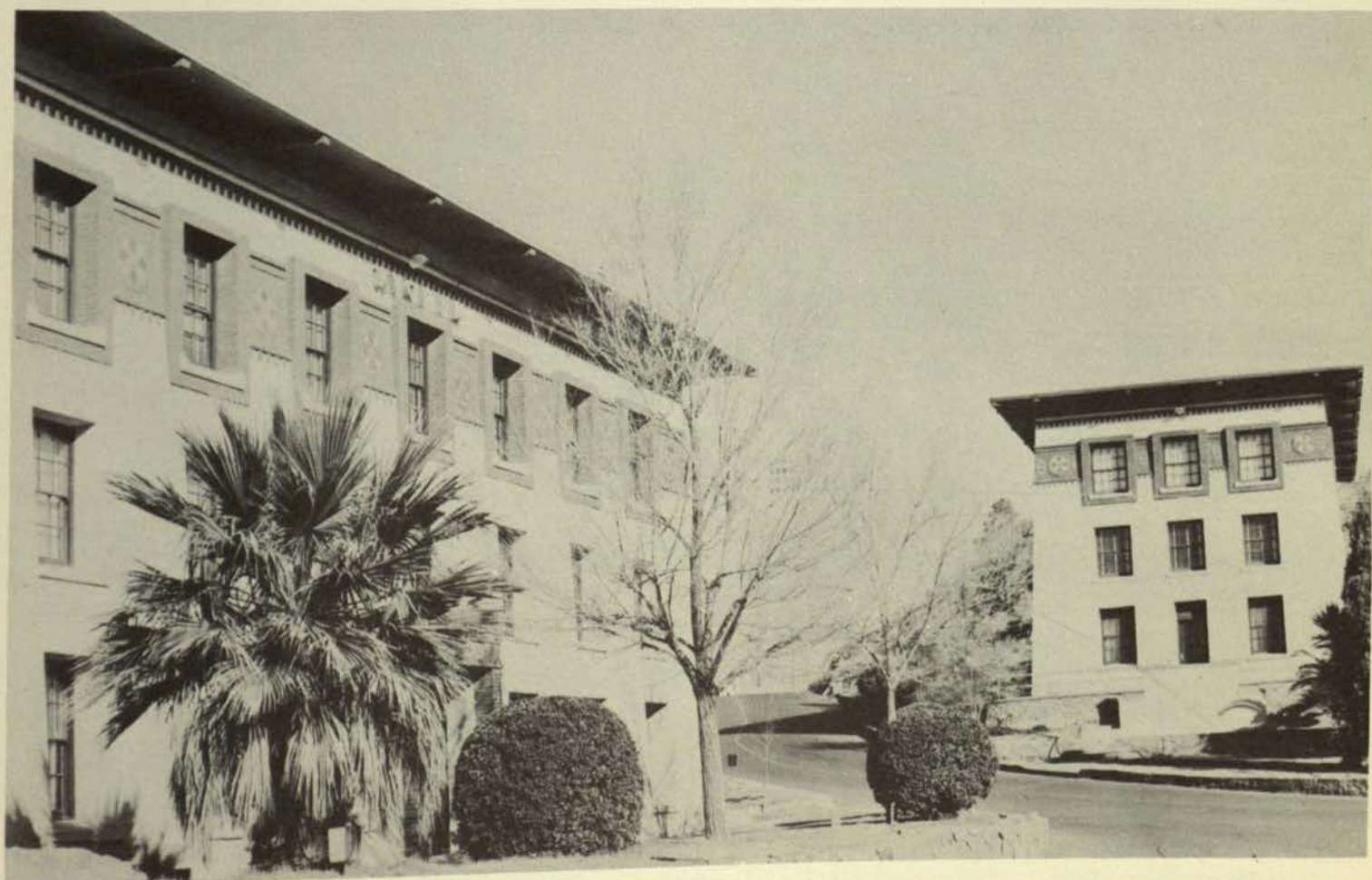


CENTENNIAL MUSEUM . . . fossils, rocks, firearms, mementos of past life, wild game trophies . . . and COTTON MEMORIAL BUILDING . . . art, sculpturing, speech, printing.



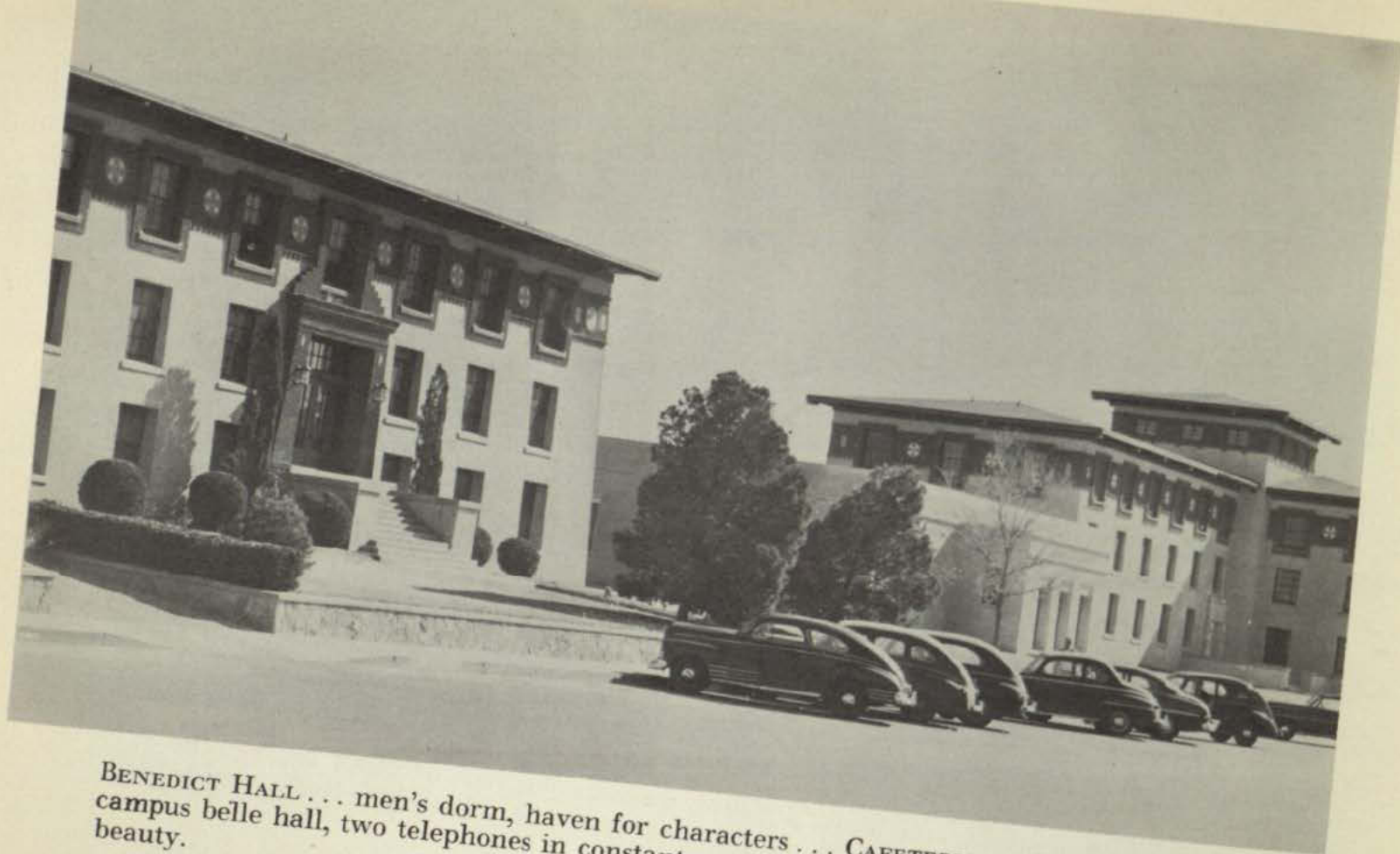


SCIENCE BUILDING . . . organic, physical, quantitative, bio-chemistry labs . . . the STUDENT UNION BUILDING at right . . . coffee, conversation, fellowship, deans, publications.



KELLY HALL . . . stately, with KVOF, class rooms, the PROSPECTOR . . . BURGESS HALL at right . . . business administration, economics, accounting.





BENEDICT HALL . . . men's dorm, haven for characters . . . CAFETERIA . . . BELL HALL . . . campus belle hall, two telephones in constant use, out-of-town contributions to campus beauty.



HUDSPETH HALL . . . BENEDICT HALL . . . MINER HALL . . . the latter home for athletes, the former homes for out-of-towners . . . males, that is.



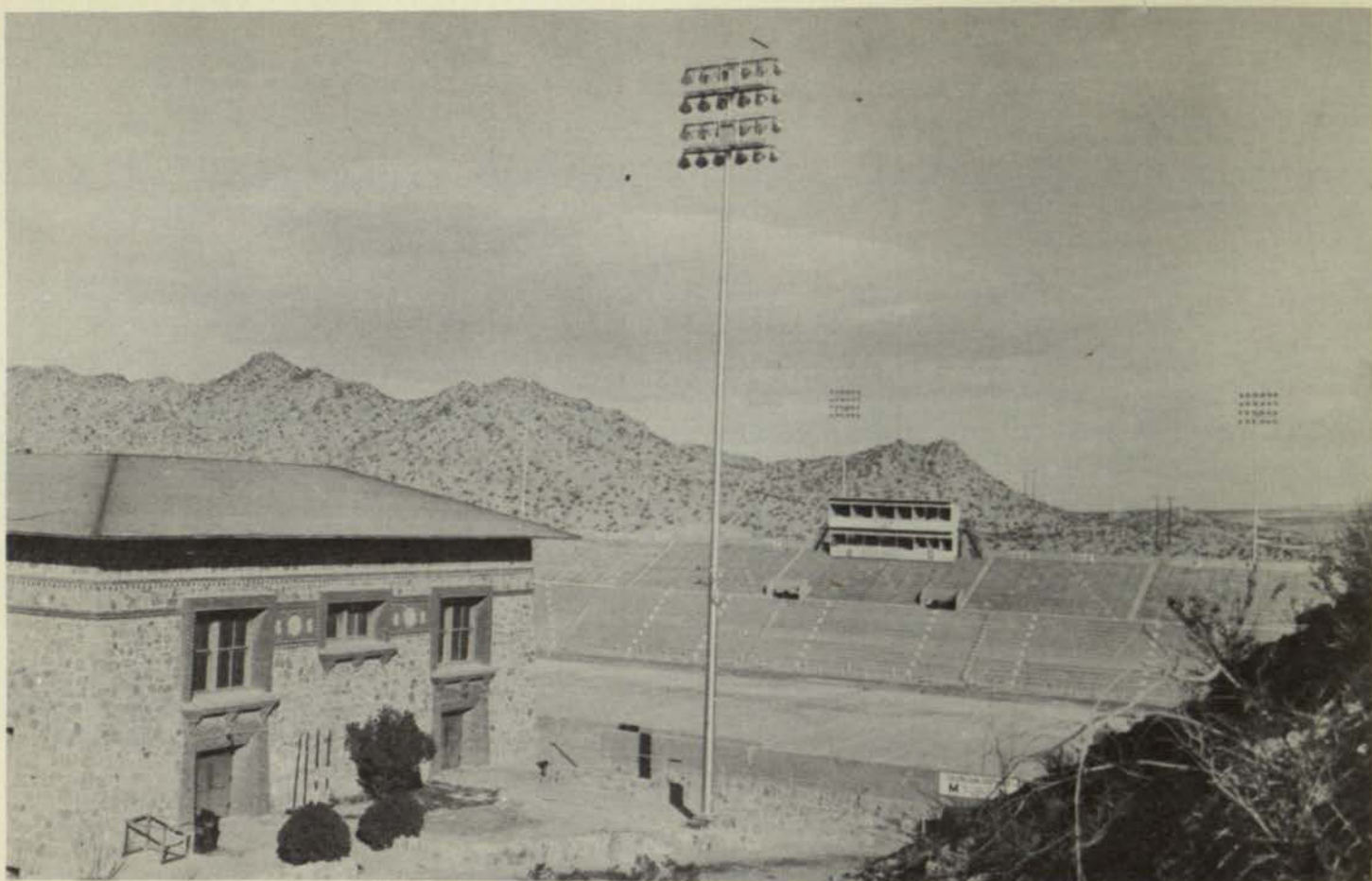


GEOLOGY BUILDING . . . maps, rocks, labs . . . with Old Main, rechristened PHYSICS BUILDING, towering above . . . math, physics, modern languages.



ENGINEERING BUILDING . . . powerhouse, drawing labs, the dean . . . and ancient SEAMON HALL . . . shrine of mining engineering.





HOLIDAY HALL . . . basketball, intramurals . . . and KIDD FIELD . . . scenes of gridiron heartbreaks and triumphs.



WOMEN'S GYM . . . gal's athletics . . . and SWIMMING POOL . . . summer haven, intramural water sports, diving exhibitions.





*Kelly Hall, on upper campus*



*Stables . . . for Physical Education credit and western-style riding.*