



The background of the page is a light beige or cream color. It is decorated with thick, olive green lines that form abstract, geometric shapes. A large, irregular pentagon-like shape is outlined in the upper half of the page. In the lower half, there are several lines that form a series of connected, angular shapes, some of which are partially cut off by the edges of the page. The word "ADMINISTRATION" is printed in a dark, serif font, centered horizontally in the lower half of the page, overlapping the geometric lines.

ADMINISTRATION



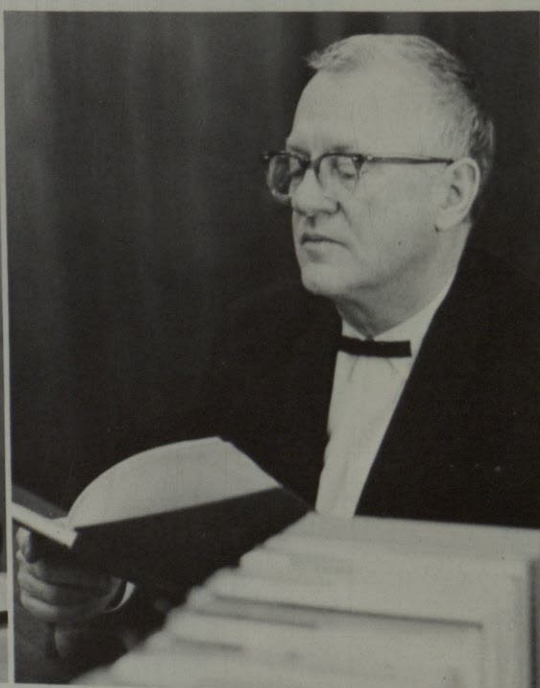
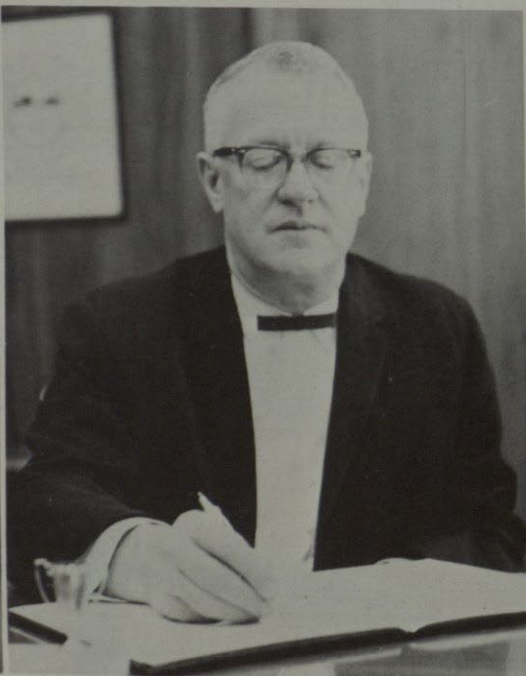
President Joseph M. Ray

PRESIDENT VIEWS

It is always a privilege to be permitted to extend greetings to our faculty and students through the FLOWSHEET. The FLOWSHEET is the best record you can have of your year in the University. This will always be a unique year in your life; you will refer to this particular year as your freshman, sophomore, junior or senior year. This annual will mean a great deal more to you in future years than it does now.

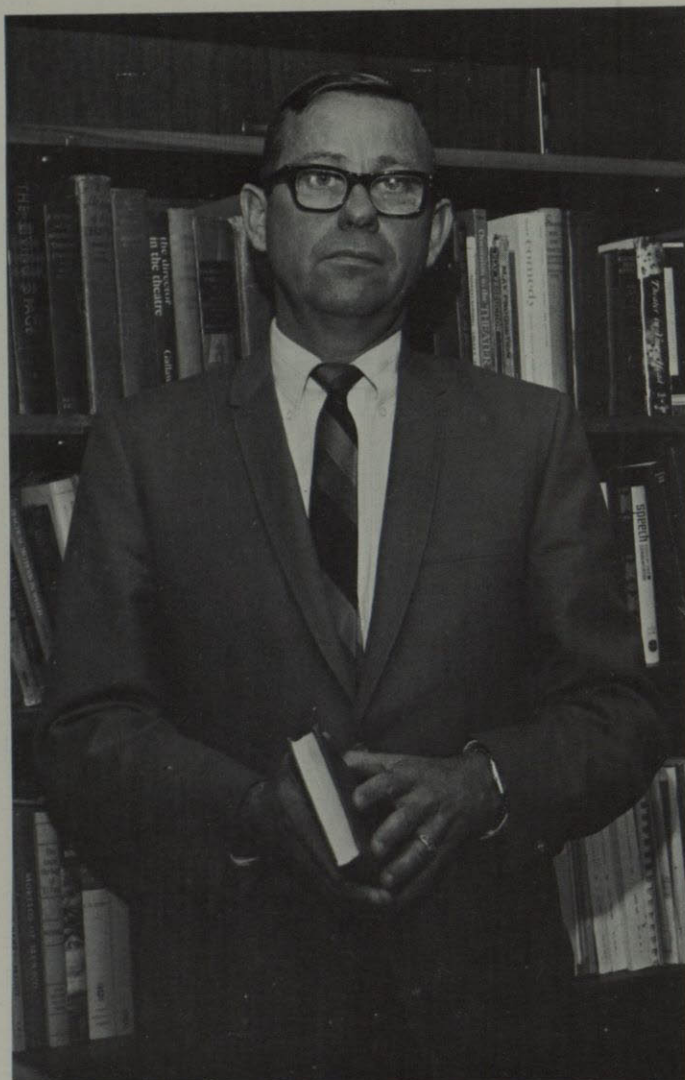
The University of Texas at El Paso continues its onward thrust. We are a better institution this year than we were last year, and we will be even better next year. A good measure of the quality of an educational institution is the enthusiasm which the faculty and students have for it.

I congratulate this year's editors of the FLOWSHEET on the splendid book they have produced.



UNIVERSITY WITH GROWING PRIDE, HOPE





Dr. Milton Leech, Vice-President

GOOD RELATIONSHIP

Board of Regents of The University of Texas

Frank C. Erwin, Jr., Chairman
 Jack S. Josey, Vice-Chairman
 Betty Anne Thedford, Secretary

MEMBERS

Terms Expire 1969

Frank C. Erwin, Jr., Austin
 Mrs. J. Lee Johnson, III, Fort Worth
 Rabbi Levi A. Olan, Dallas

Terms Expire 1971

W. H. Bauer, Port Lavaca
 Jack S. Josey, Houston
 E. T. Ximenes, M.D., San Antonio

Terms Expire 1973

Frank N. Ikard, Wichita Falls
 Joe M. Kilgore, Austin
 John Peace, San Antonio

Chancellor of The University of Texas System

Harry H. Ransom, Ph.D.



Dr. Clyde Wingfield, Vice-President

RESULTS FROM CLOSE STUDENT CONTACT

With the expansion of the University came a need to add a second vice-president to assist in administrative duties. The visit of Vice-President, Hubert Humphry to the Campus on October 27, was only one of the detailed planning jobs assumed through the offices of the vice-presidents. These security arrangements were only a minor part of the vice-president's responsibilities.

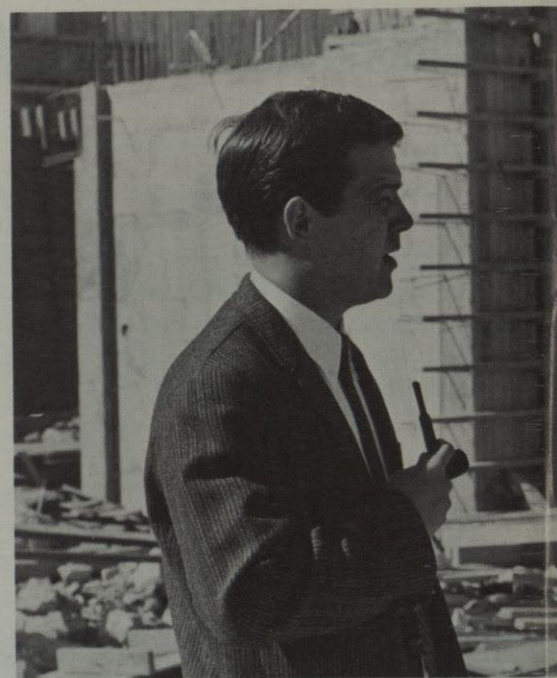
Both Dr. Wingfield and Dr. Leech are concerned with student problems as seen through their close contact with students who need advising in areas of student-administrative relations. A sincere interest on the parts of both of these men has brought the vice-presidents closer to the students. Forums for exchange of ideas between the two levels and easy accessibility to offices make their role one of importance in the life of each student and to the success of administrative duties.

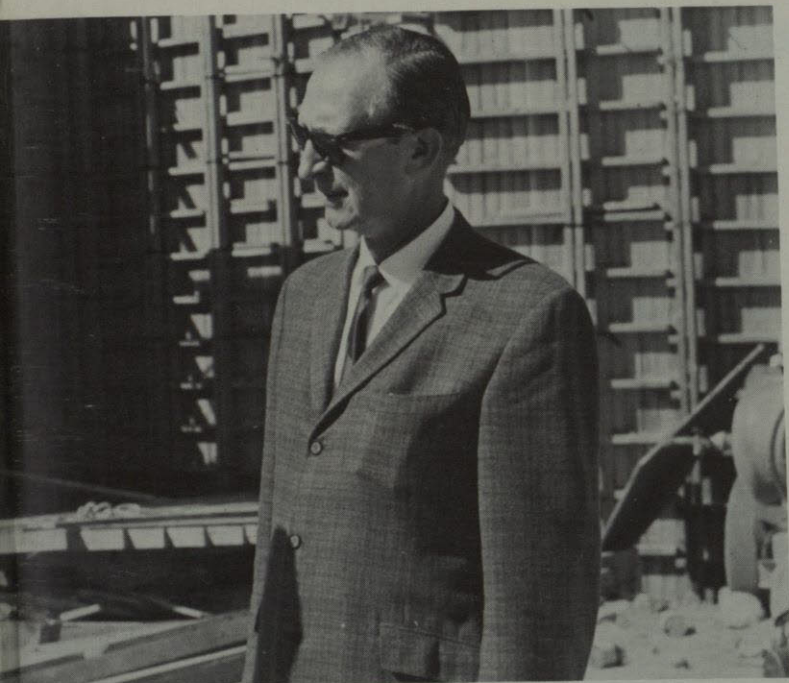


ADMINISTRATORS DIRECT ACADEMICS, ATHLETICS

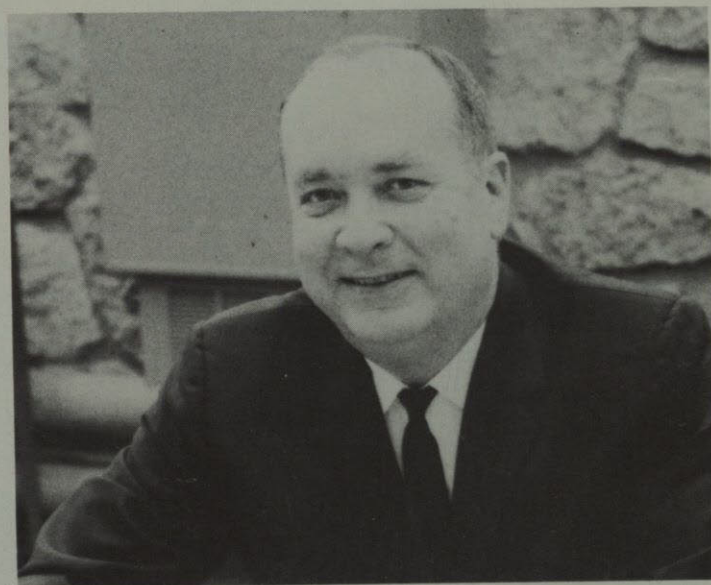
The administrators of the University of Texas at El Paso through their various offices aid the students both individually and collectively. Their knowledge and abilities are available in all areas of campus life including intellectual, social, and athletic activities and associations. They strive to provide the institution with an administrative staff whose capability and efficiency contributes an essential part to the smooth operation of the University as a whole.

Clarence Cervenka, Registrar





Dale Walker, Director of News and Information and Baxter Polk, Librarian



George McCarty, Director of Athletics

Steele Jones, Assistant to the President, Joy Riley, Administrative Assistant to the President, and Kenneth Carpenter, Assistant to the President



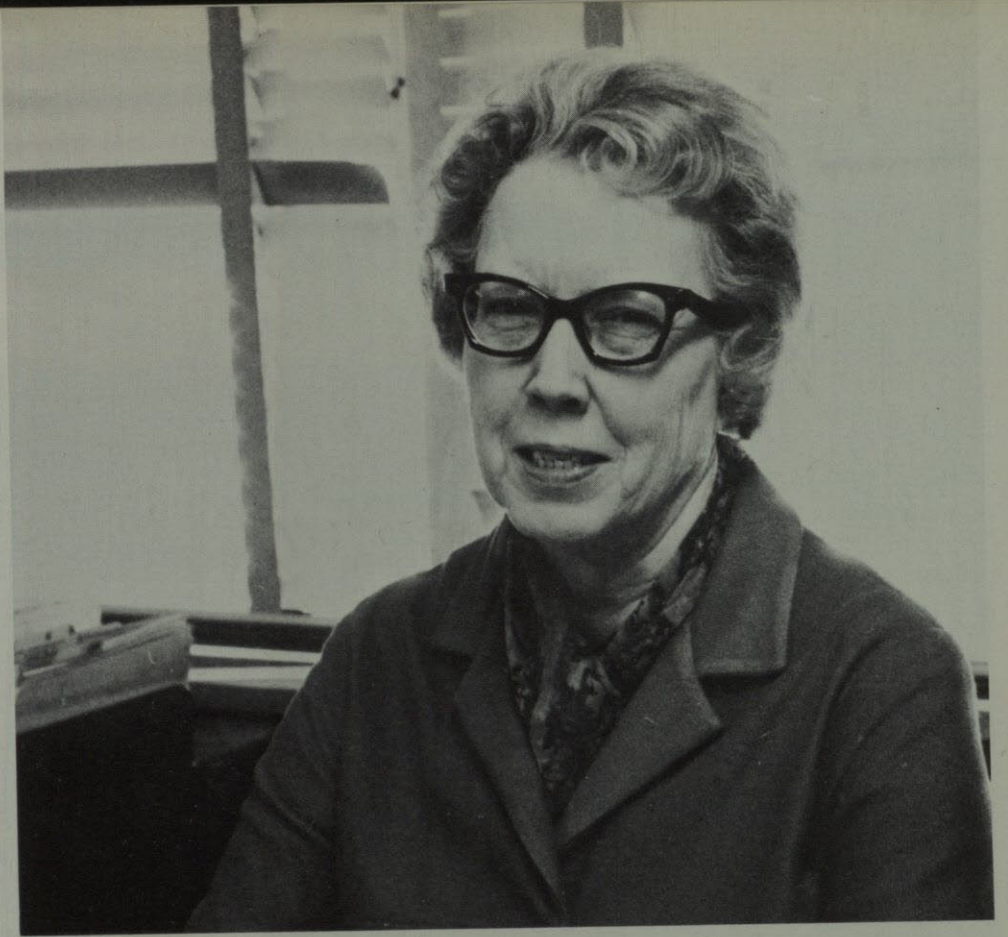
DEANS OF STUDENTS GUIDE, OFFER HELP

To the Deans of Students on any campus fall the responsibilities of many varied positions, which they are expected to bear efficiently. This is true of the UT El Paso campus as it is of all others. The Deans, in an effort to serve the students well, act as advisors, supervisors, counselors, adminis-

trators, and friends. For this devotion and belief in their work and in those for whom they work, Deans Jimmy Walker, Louise Resley, and Lawrence Hamilton are indispensable to the University.

Jimmy Walker, Dean of Students





Louise Resley, Assistant Dean of Students

Lawrence Hamilton, Assistant Dean of Students



STUDENT ACTIVITIES

Within the Office of the Dean of Students are several departments designed for the purpose of aiding students in different capacities.

The Union Program Office, headed by Tom Chism, directs student activities planned and presented by the Union Program Council.

The Office of Intramural Athletics, directed by John Guzman, provides a wide range of competitive activities for both men and women. These include basketball, volleyball, swimming, track, softball, and pool. For men, there is the addition of football; for women, bowling.

The Office of Financial Aid, administered by John T. Evans, grants scholarships and loans to attract and retain outstanding students and to reward academic excellence.



John Guzman, Intramurals Director

John T. Evans, Director of Financial Aid and Placement.



Richard Pryor greets S.A. Vice-President, Patty Aboud.



BROADEN IN SCOPE, INCREASE PROGRAMS

Mr. Tom Chism, Director of Student Activities





Assisting Dean Coleman is Helen Evans, his secretary.

NINE MAJORS

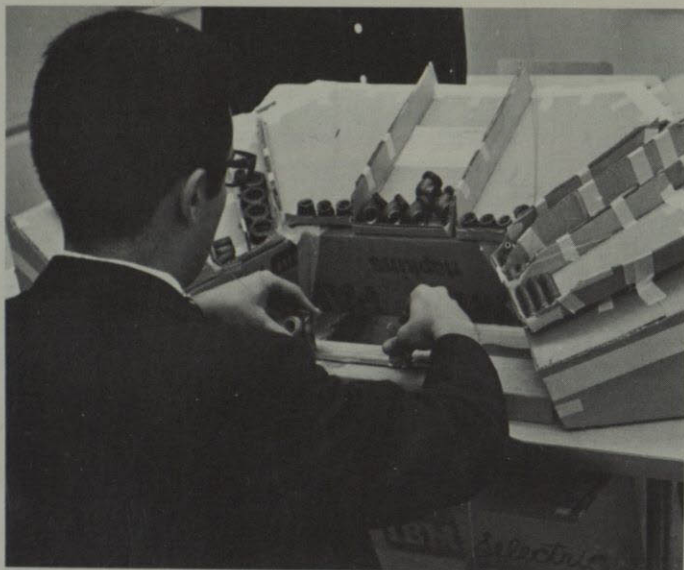
Since 1964, the UT at El Paso Graduate School has been recognized as a unit of the state-wide system of the University of Texas. The conduct of affairs is carried out by the local division of the Texas Graduate Faculty. Administration is conducted by the Dean of the Graduate School, Dr. Edmund Coleman and the Institutional Graduate Studies, which is composed of the members and associates of the Graduate faculty. The number of degrees offered is steadily increasing. At the present time, majors are offered in education, engineering, English, geology, government, history, physics, psychology, and Spanish.



OFFERED TO GRADUATES IN FIVE FIELDS

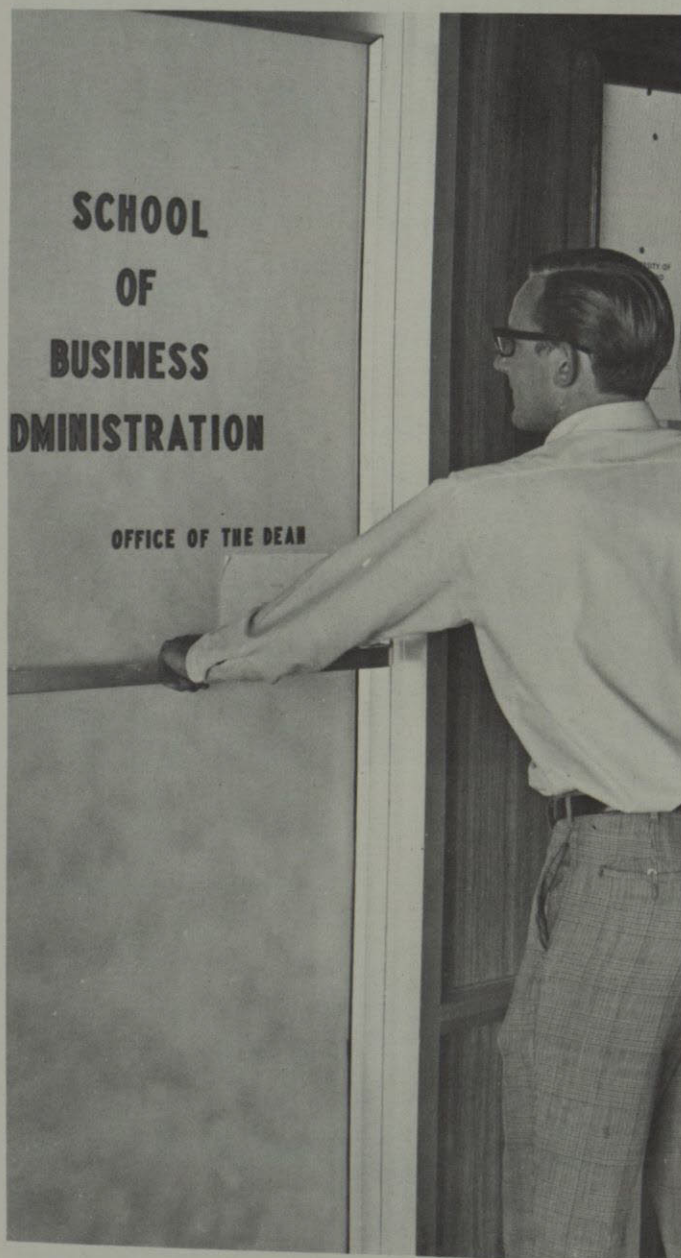
Dr. Edmund Coleman, Dean of Graduate School





Students apply basics to business problems.

The School of Business is located in the Liberal Arts Building.

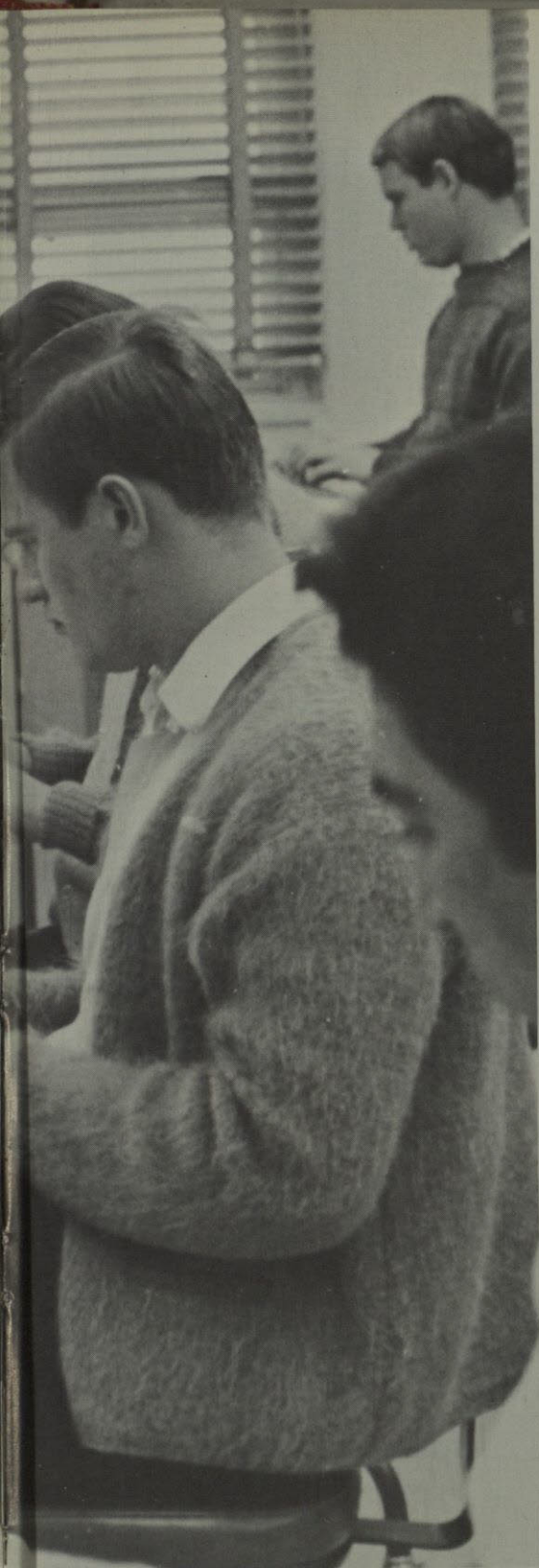


Typing is required for students majoring in Business Administration, and is also popular as an elective.

IBMS INCLUDED IN

Since the change from department status less than a year ago, the School of Business Administration has proved that it can and will keep pace with the great strides of our industrial society and the resulting demands that it places on our institutions. The primary function of the school is to provide instruction in the fields of secretarial studies, foreign trade, finance, accounting, management, marketing, and

(continued on next page)



Dr. John Richards, Dean of Business Administration

BASIC INSTRUCTION

economics. In addition to classroom dissertation, further instruction is offered in the use of complex business machinery, such as the IBM computers, which are of considerable value for the student preparing to meet the modern commercial conditions in the business and industrial worlds. For its achievements, the School of Business Administration has gained recognition.

SCHOOL OFFERS ENDLESS OPPORTUNITIES

The School of Education is faced with the problem of supplying the great number of highly qualified teachers needed in our schools and universities today. For those who can meet its challenge, the school offers unlimited opportunities. On the undergraduate level, there are courses pertaining to elementary and secondary education and to the special education of exceptional and mentally retarded chil-

(continued)

dren. On the graduate level, there are courses pertaining to training in the areas of counseling, elementary and secondary principles, and elementary and secondary supervision. The school requires a balance among general education, specialization, and professional training in all programs to give insight into all the factors involved in the teaching-learning process.

The School of Education has its own library located in the Education Building.

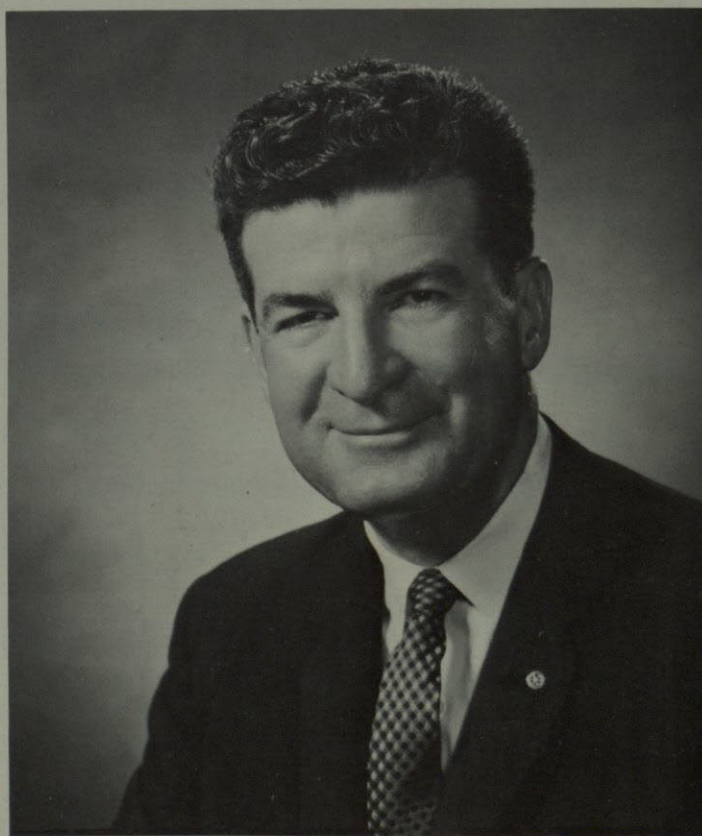


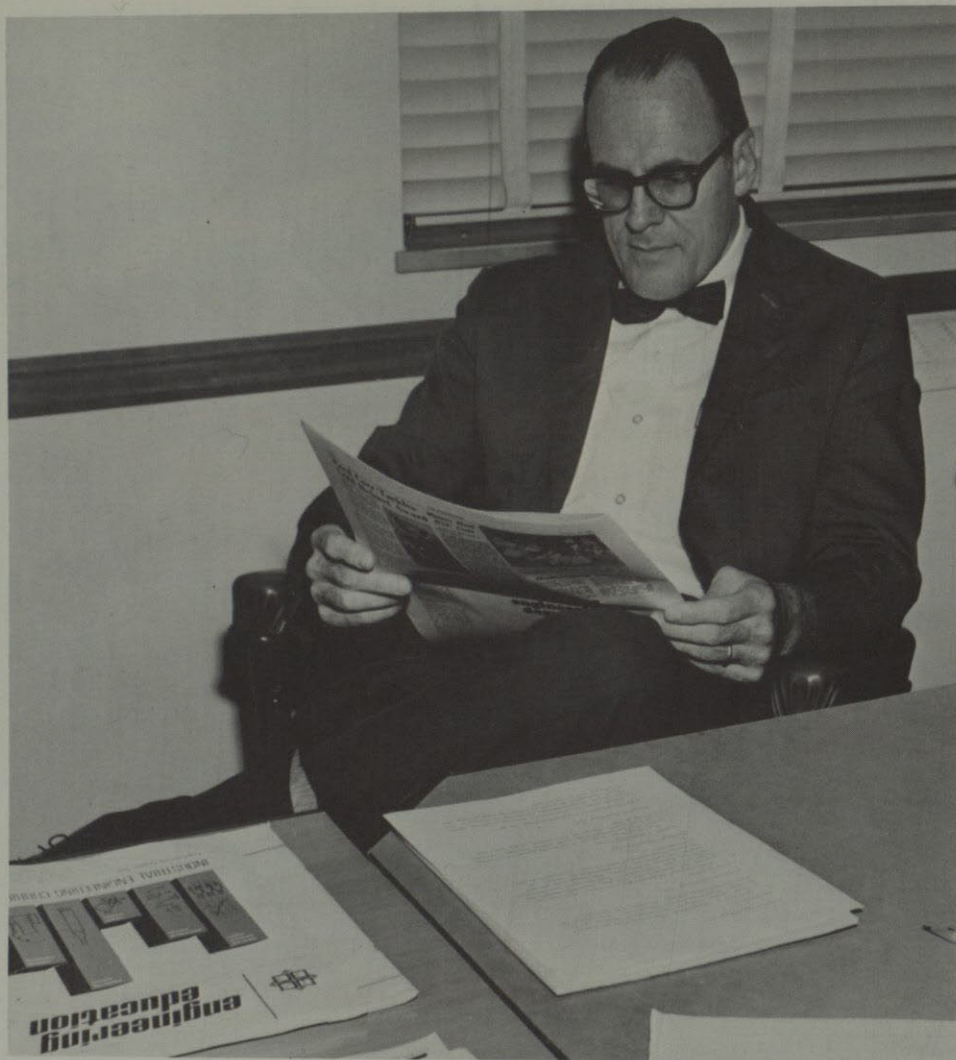


Located on Randolph Street, the Education Building houses its own library.

Sorting educational data is only one of many tasks performed for the School of Education.

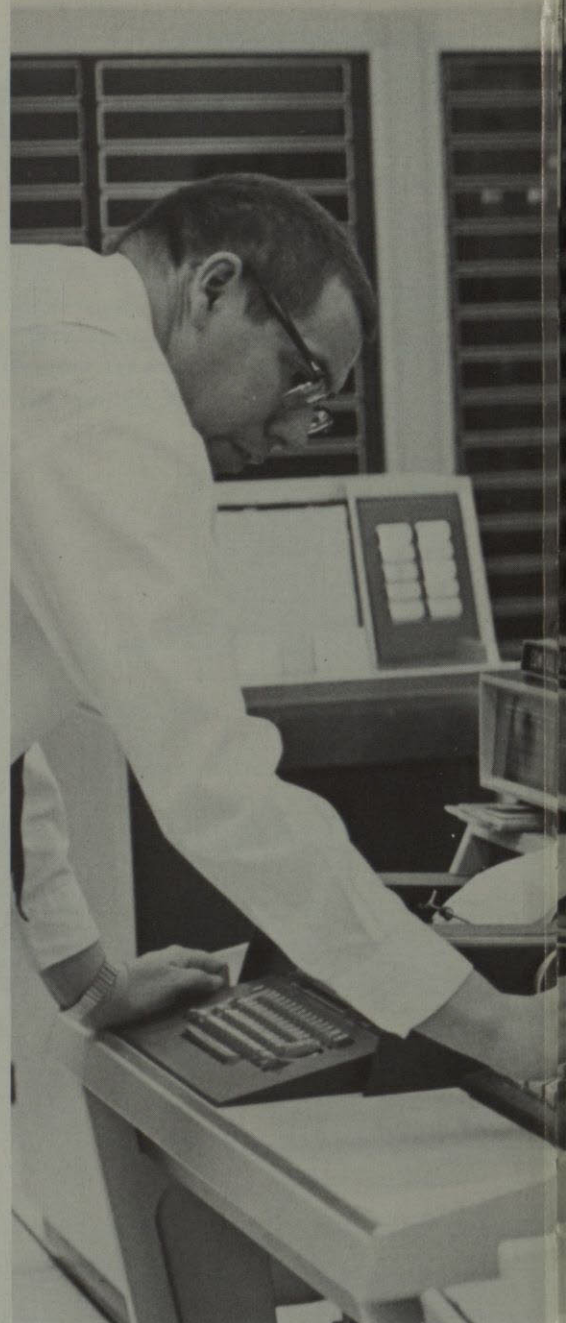
Dr. John McFarland,
Dean of Education





Dr. Lonnie Abernethy
Dean of Engineering

Engineering students spend many hours in the Engineering Building.





Students receive training on the most modern facilities.

FOUR ENGINEERING SCIENCES OFFERED

The School of Engineering offers broad and specialized programs in the engineering sciences: electrical, metallurgical, mechanical, and chemical. The programs are designed to develop the student's abilities to enable him to enter and advance in the profession.

Electrical engineering became a separate department in 1964, resulting in the reorganization and modernization of its curriculum, laboratories, and staff. Also, accreditation was received from the Engineer's Council for Professional Development. Electrical engineering is involved in work being carried on in the Schellenger Research Laboratories, which were created to promote and encourage research

in electricity.

Civil engineering involves the economic application of the sciences to the improvement of man's environment. It is a broad field, ranging from the design and construction of hydro-electrical projects to the investigation of radio-isotopes in cells.

Mechanical engineering has been dramatically changed with the impact of science upon human environment since World War II. The field has been expanded to include nuclear power, missiles, underwater development, and related fields.

ARTS CREATE NEW ENTITY

The School of Liberal Arts was until this year, associated with the School of Science. As a separate school, the Liberal Arts division represents the largest school on the University of Texas at El Paso campus.

Headed by Dean Ray Small and Assistant Dean Wade Hartrick, the School of Liberal Arts includes twelve departments in fine arts and the humanities.

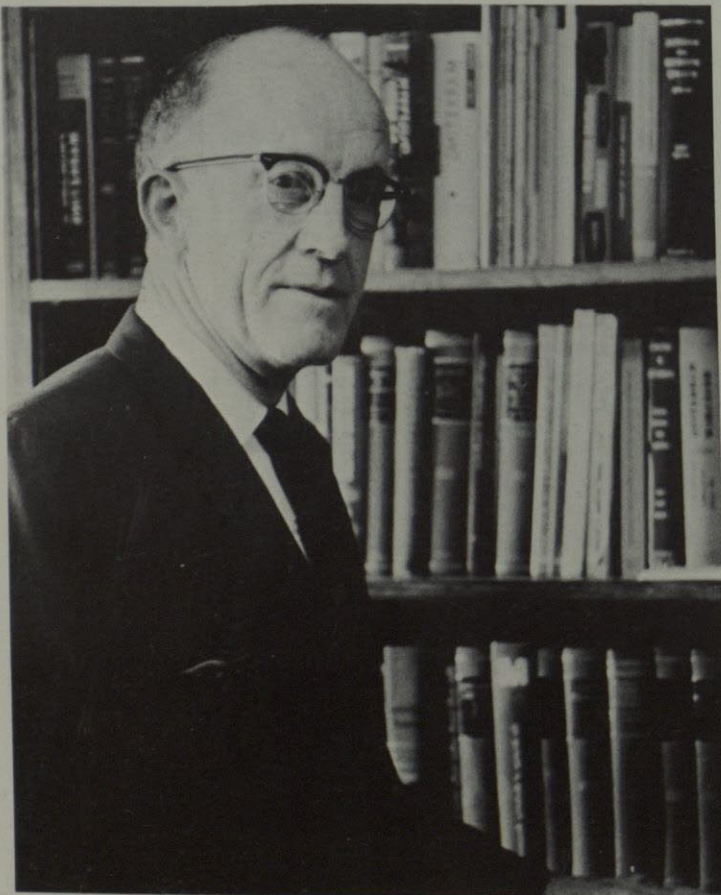
Foreign language students attend laboratories to augment classroom instruction. Students of the social sciences do field work in surrounding areas of low-income levels.

Each student who receives a degree from the University of Texas at El Paso will at one time during his course of study, be a student of this school.



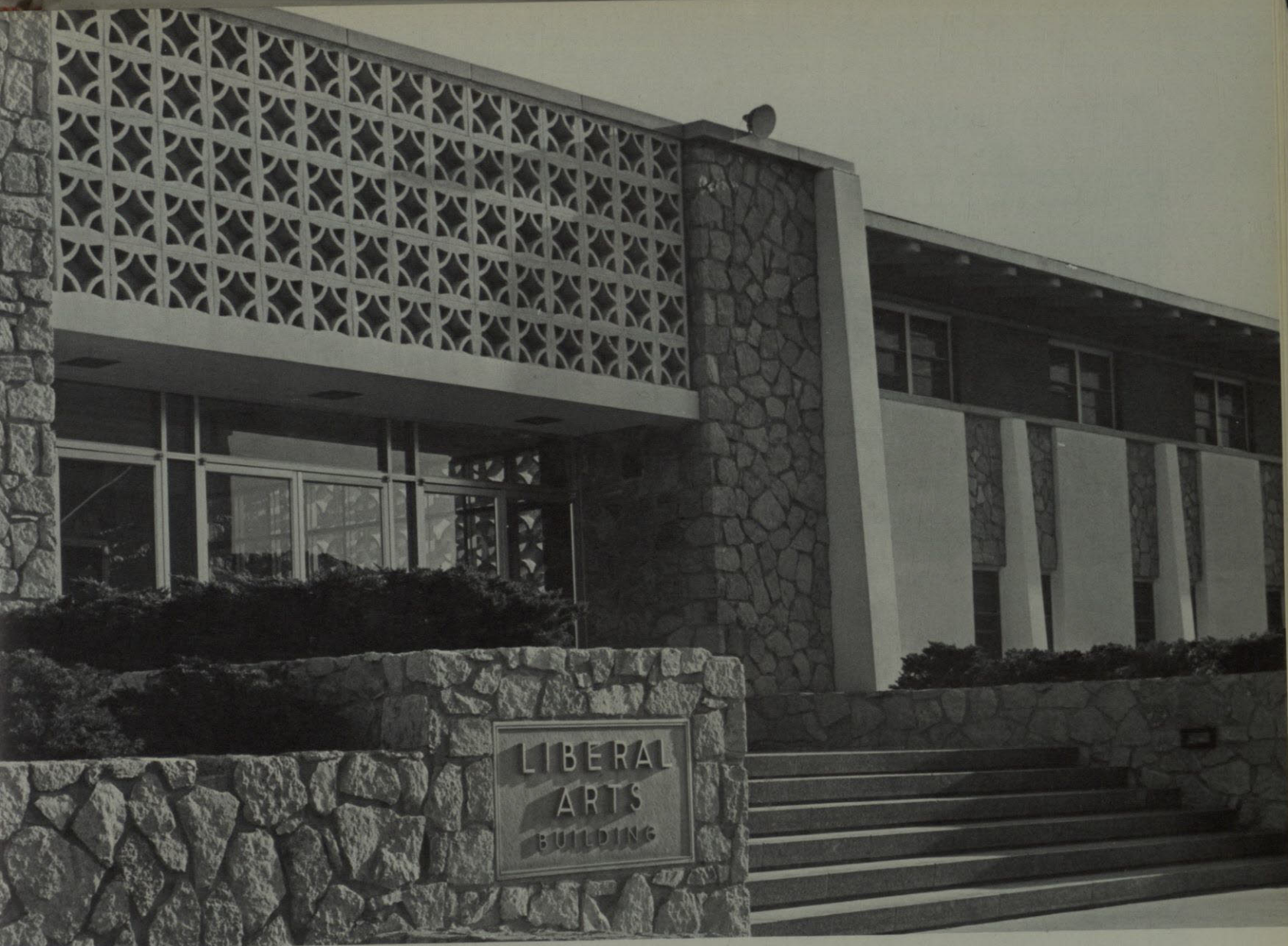
Dr. Ray Small, Dean of Liberal Arts

Dr. Wade Hartrick, Assistant Dean of Liberal Arts



Adequate classroom facilities are now available as the result of construction.





Liberal Arts Building, located on University Avenue.

Foreign language labs prove helpful in adapting the student to the spoken forms of various tongues.

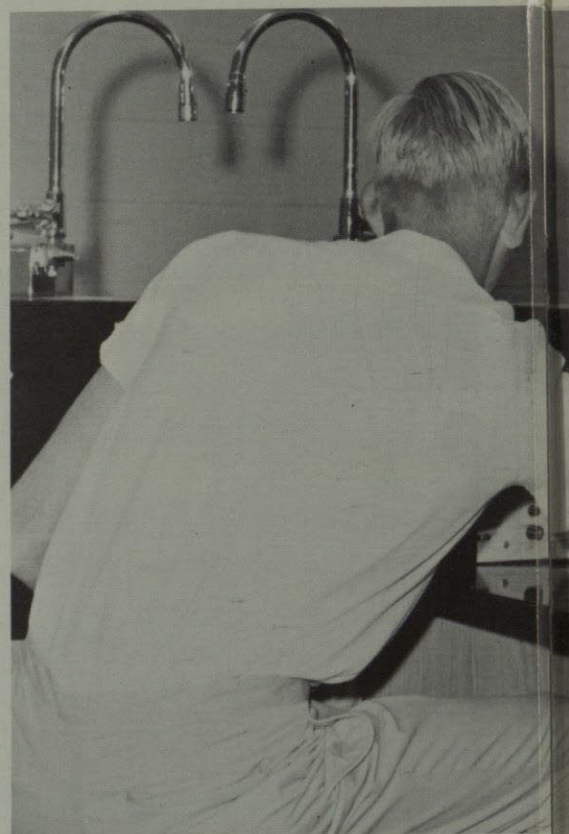


PHYSICAL SCIENCE NEW ON CAMPUS

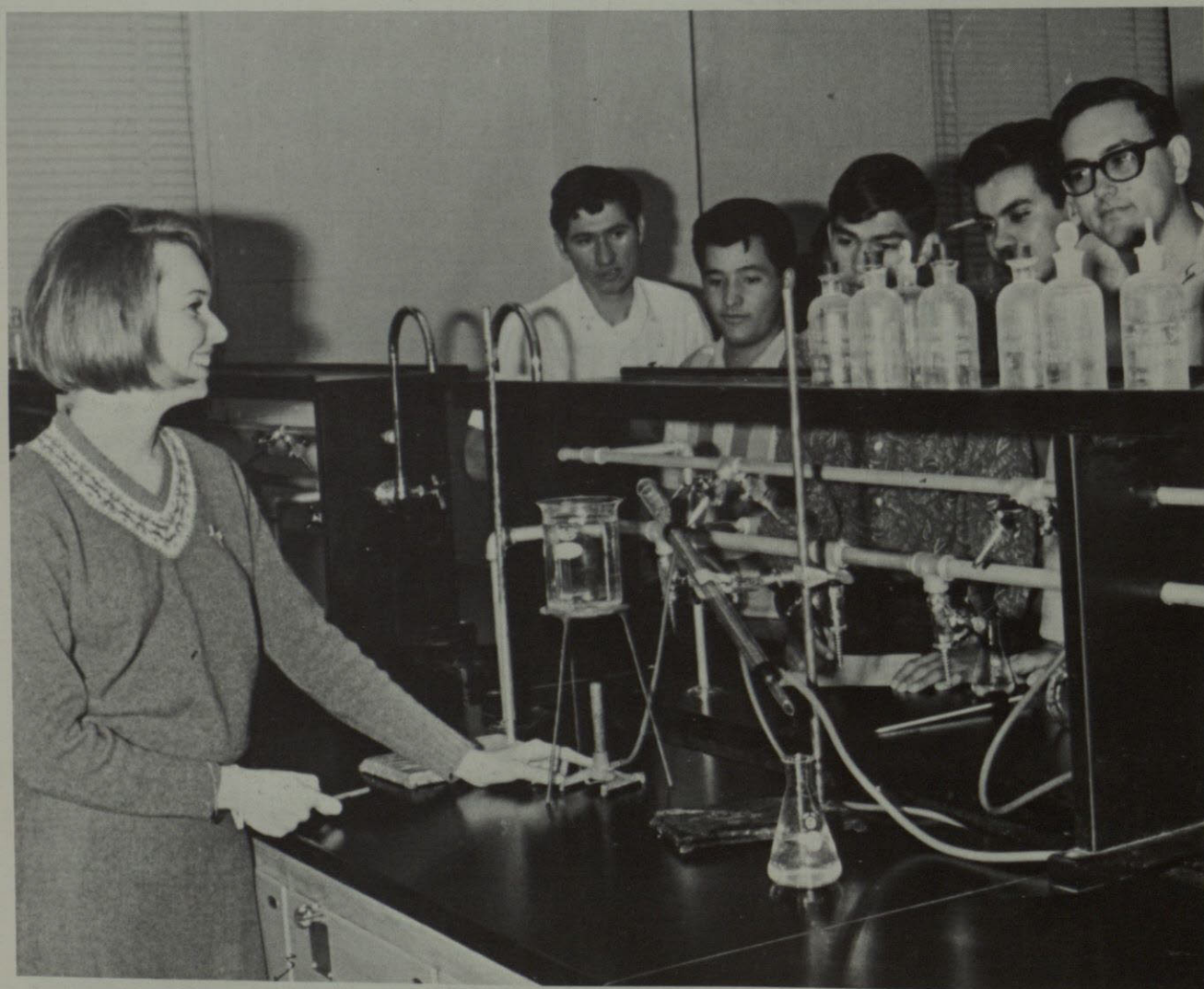
The newly created School of Science is housed in a completely modern facility, the Physical Science Building, which was opened for classes this fall.

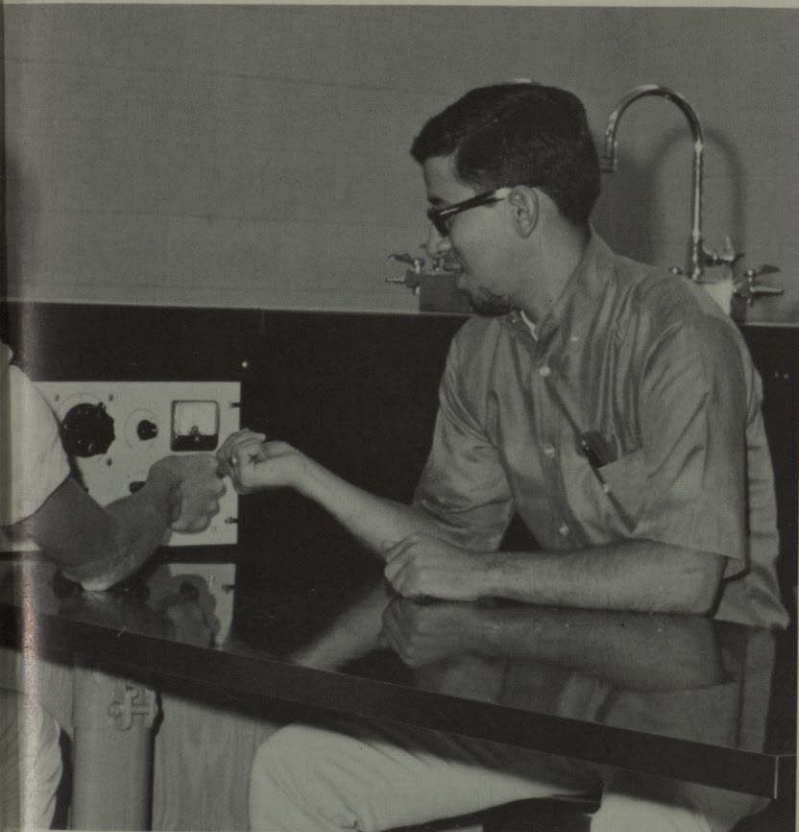
The new building contains many special labs for the use of those pursuing a scientific course of study. Lecture halls, classrooms, and offices complete the structure.

The School of Science includes the departments of biology, chemistry, geology, mathematics, and physics. The typical science major must take courses in English, history, government, economics, physical education, and a foreign language as well as courses in his major and minor fields, to produce a well-rounded background.



Chemistry and physics labs are located in the Physical Sciences Building.





Advanced equipment abounds in the School of Science.



Dr. Lewis Hatch, Dean of Science

Physical Science Building, located on Hawthorne Street.



GUIDANCE GIVEN BY POLICE, DIRECTORS

Enforcement of traffic regulations and other campus laws is the task of the University Police. Headed by Police Chief, James Petzold, the force mans the various entrances to the campus to assure that unlawful entry of student vehicles is prevented. Other areas in which the police are occupied include guarding campus facilities on holidays and weekends, and acting as chaperones to some school sponsored events. Each man on the staff is a commissioned peace officer which gives him jurisdiction in enforcement of city and county laws in addition to campus rules.

Helpful dormitory directors insure the safety and happiness of dorm residents by enforcing rules and by acting as friendly advisors to the students. While UT El Paso is a predominantly commuter campus, dorm residents represent a growing percentage of students. There are six dorms under the jurisdiction of campus officials, and one co-educational dorm which while privately owned, follows closely the campus regulations.



James Petzold, Chief of University Police.

County Commissioner, Colbert Coldwell, administers the peace officer's oath to A. A. Timberlake, Lonnie Maloney, George H. Danforth, Clifford Finlen, James Petzold—Chief, Tenny Shepherd, Kenneth Oefelein, Homer D. Carroll, and John Williams.





Hawthorne House, an off-campus dorm, is directed by Mr. and Mrs. Mayhall.

Mrs. Cecile Waller is director of Bell Hall, a women's dorm.



Mrs. Marie Hill directs Benedict Hall residents.



SIX CAMPUS DORMS HOUSE 500 STUDENTS

On the campus of UT at El Paso, there are six dormitories housing close to five hundred students. Miner's Hall, directed by Mr. Wayne Vandenburg, houses seventy-two athletes. Worrell, which is directed by Mrs. May Stuart, is an honor dormitory that houses

thirty men. Honor graduates of high schools and academic scholarship recipients are eligible to apply for residence in Worrell Hall. Hudspeth Hall, directed by Mrs. Thelma Karn, houses one hundred men, while Burges Hall houses one hundred eighty men.

There are also two women's residence halls on campus, Bell and Benedict, housing ninety-eight and seventeen respectively. The director of Bell Hall is Mrs. Cecile Waller and the Benedict Hall director is Mrs. Avis Hill.

Dale Lazenberry, Director of Burges Hall





Mrs. Thelma Karn is director of Hudspeth Hall.

Worrell Hall residents are directed by Mrs. May Stuart.



Mr. and Mrs. Wayne Vandenburg act as directors in Miner's Hall.



PROGRESS SEEN IN MUSEUM, BOOKSTORE

The bookstore is located in the Union and it stocks books and supplies for all courses offered at the University. Clement Behra, bookstore manager, began his duties after much discontent arose concerning policies and distribution tie-ups.

The Centennial Museum boasts a large collection of southwestern artifacts. Rex Gerald, Curator of the Museum, and others have broadened the program offered by the Museum by sponsoring traveling shows and special displays throughout the year.

Halbert St. Clair, Business Manager is charged with the business end of University administration. With offices located in the Administration Building, the Business Office handles traffic and library fines, bids, registration fees, salaries and other financial matters of the school.



New items were added to bookstore inventory, making the selection of student necessities easier than in previous years.

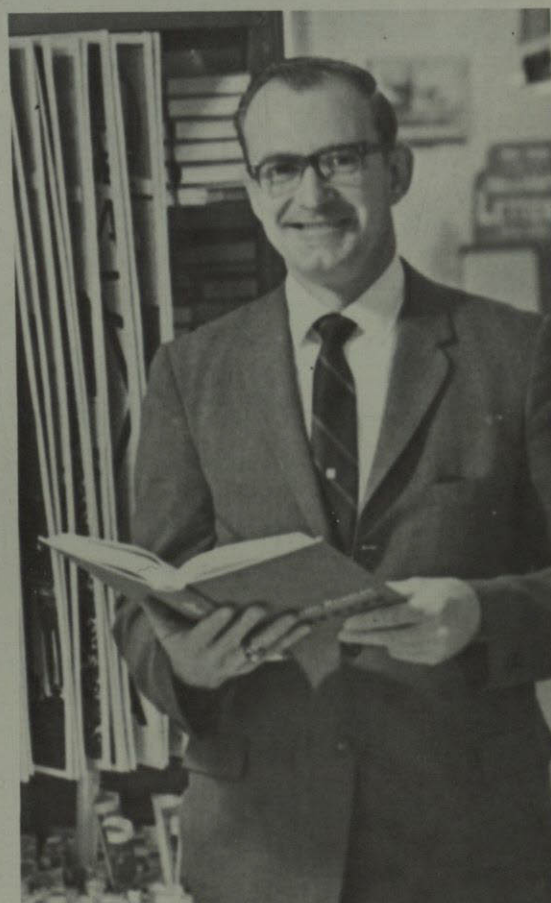




Pamphlets and books are available at the Centennial Museum which boasts outstanding displays of Southwestern articles.

Clement Behra, Bookstore Manager

Halbert St. Clair, Business Manager





Initial steps are made to begin construction.

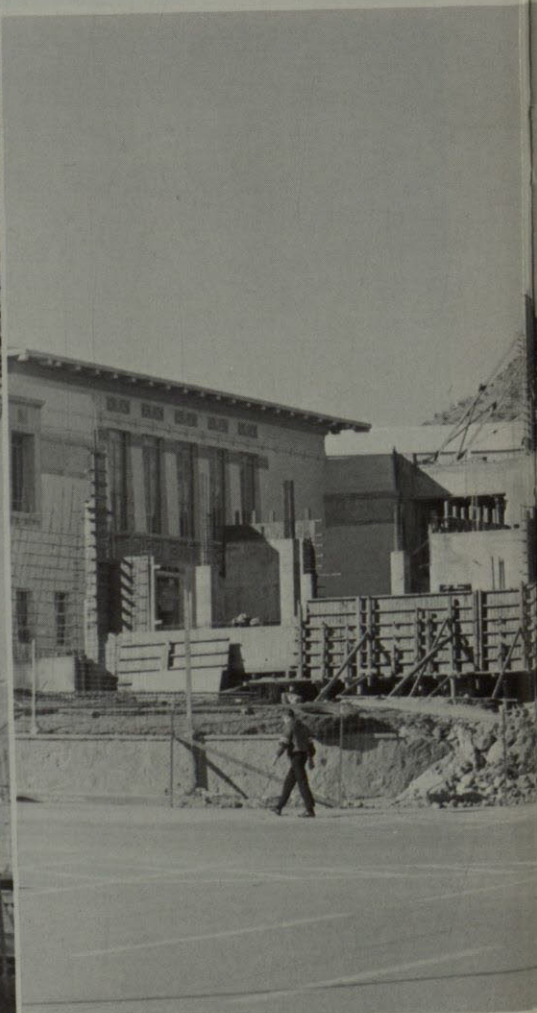
LIBRARY STYLING IS MODERN BHUTANESE

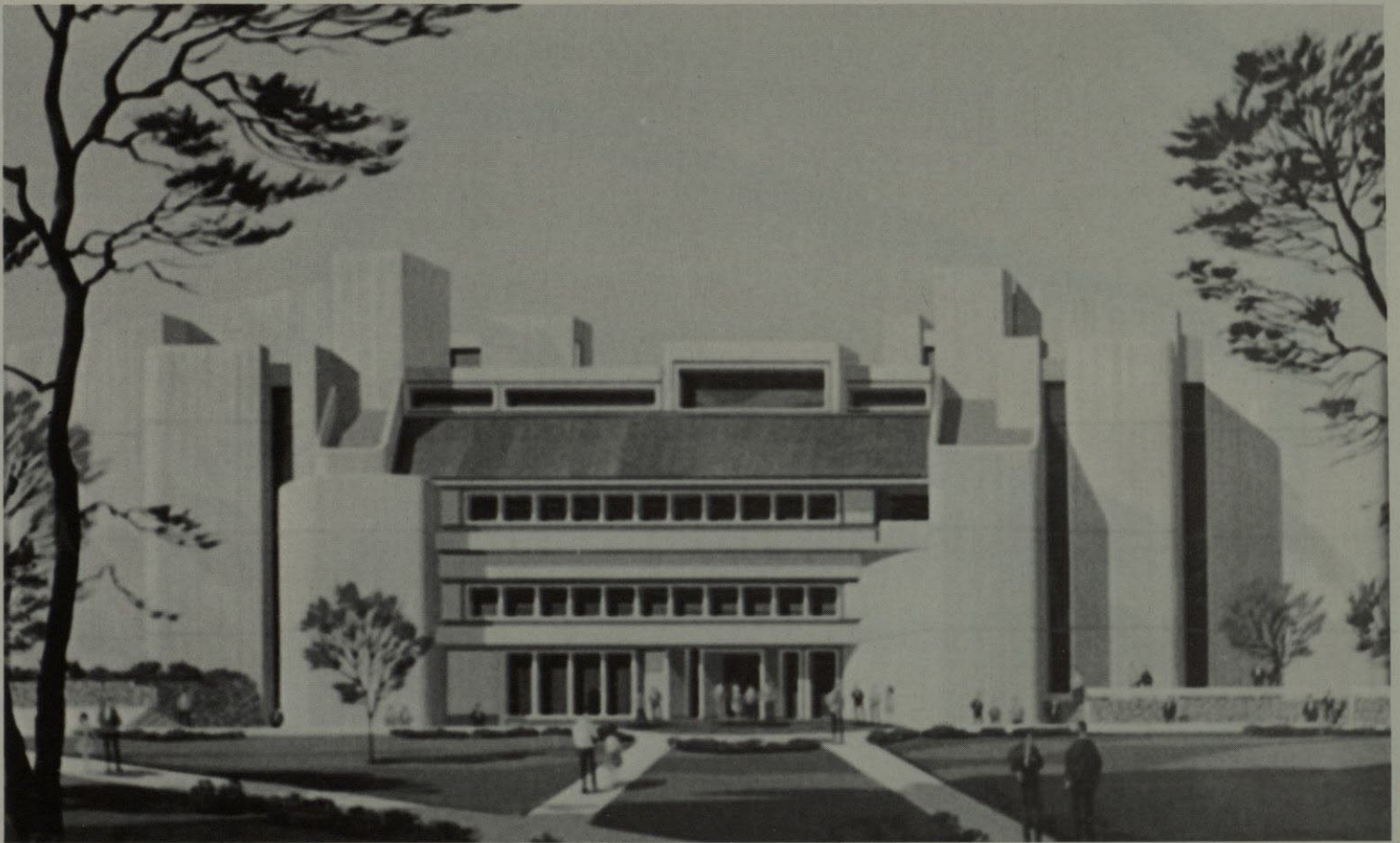
When construction began on the addition to the existing library, much speculation arose concerning its styling. Contrary to the common rumor, however, the addition does follow Bhutanese architecture of a later period than that reflected in other campus buildings.

The addition is to feature expanded shelf space as well as rooms for uninterrupted research and study.

Begun in the spring of 1967, the structure is due to be in use during the fall term. The building will be the most prominent building on campus as it represents the tallest and most centrally located edifice.

The addition is a welcome sight which will bring to an end the complaints of crowded conditions previously existing in the old building. Yes, the construction has been a mess right in the center of the campus, but the finished project will be one of the best things that ever happened to The University of Texas at El Paso.





Artist's concept of finished Library addition.

