

C A M P U S

. . . the campus in nineteen hundred and fifty four. Each building calls forth its special memories: the mass invasion of the library during dead week, the discords and harmonies floating out of the windows of the music department, "Green Grow" and the beauty contests in Magoffin, the cokes and dances in the SUB, the World Series on the SUB television set, the engineers leaving their labs at sunset, the soft lights and whispered words in the Bell Hall lounge. These are more than buildings of unusual and fitting architecture, they are a part of us.



TEXAS WESTERN

* DIVISION OF ARTS AND SCIENCES

* DIVISION OF ENGINEERING

* DIVISION OF GRADUATE STUDY

• ARTS AND SCIENCES

BACHELOR OF ARTS

Graphic Arts
Painting and Arts Methods
Biological Sciences
Business Administration
Chemistry
Economics
Education
English
French

Government
Geology
History
Music
Journalism
Bible
Crafts
Physics
Mathematics

Health Education
Physical Education
Psychology
Radio and Television
Spanish
Speech and Drama
Philosophy
Sociology
Military Science and Tactics

BACHELOR OF SCIENCE

Biology

Chemistry

Geology

Physics

BACHELOR OF BUSINESS ADMINISTRATION

Business Administration

Economics

BACHELOR OF MUSIC

Music Theory and Composition

Music Education

Applied Music

MASTER OF ARTS

Education

English

History

Spanish

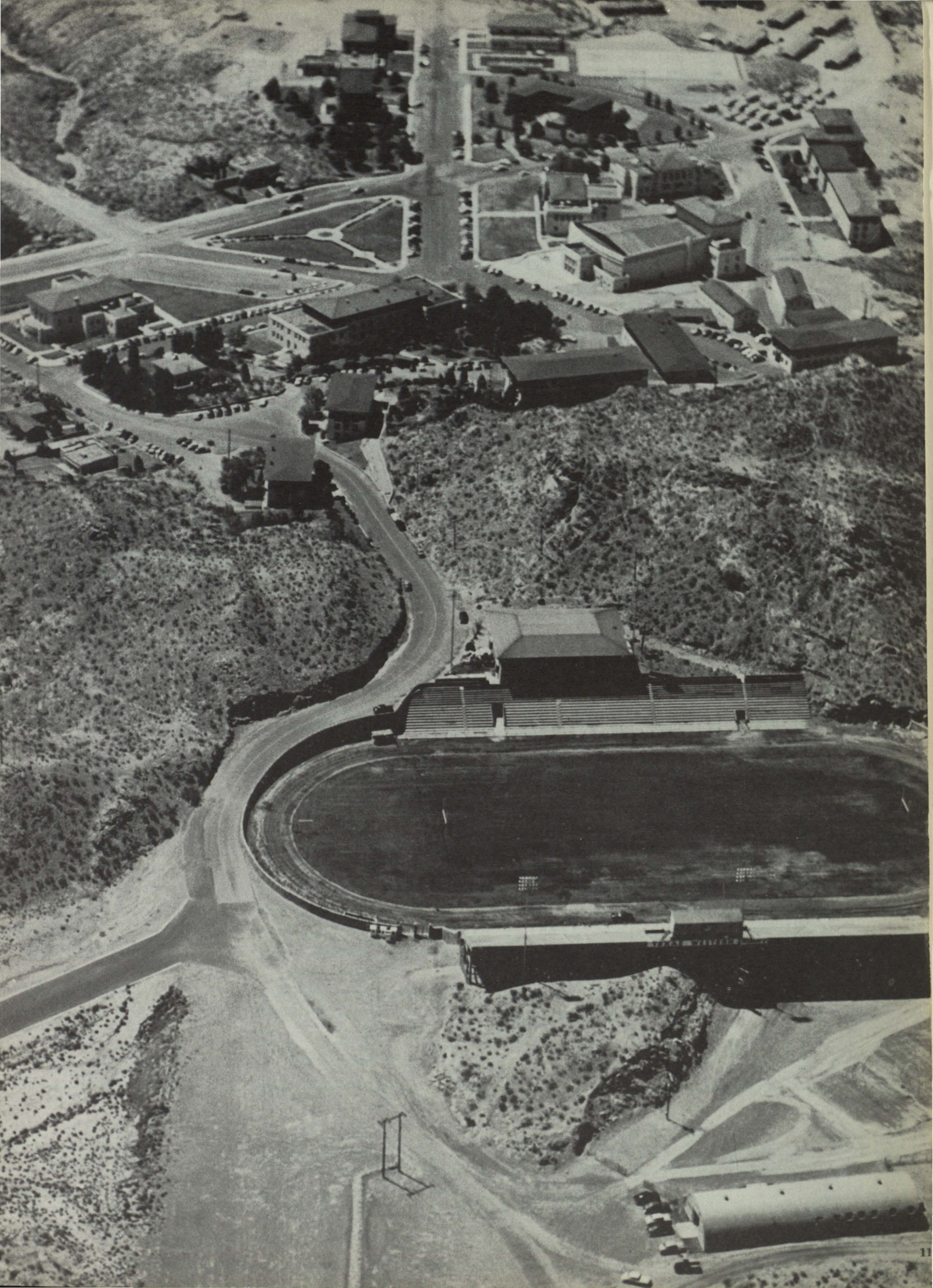
• ENGINEERING

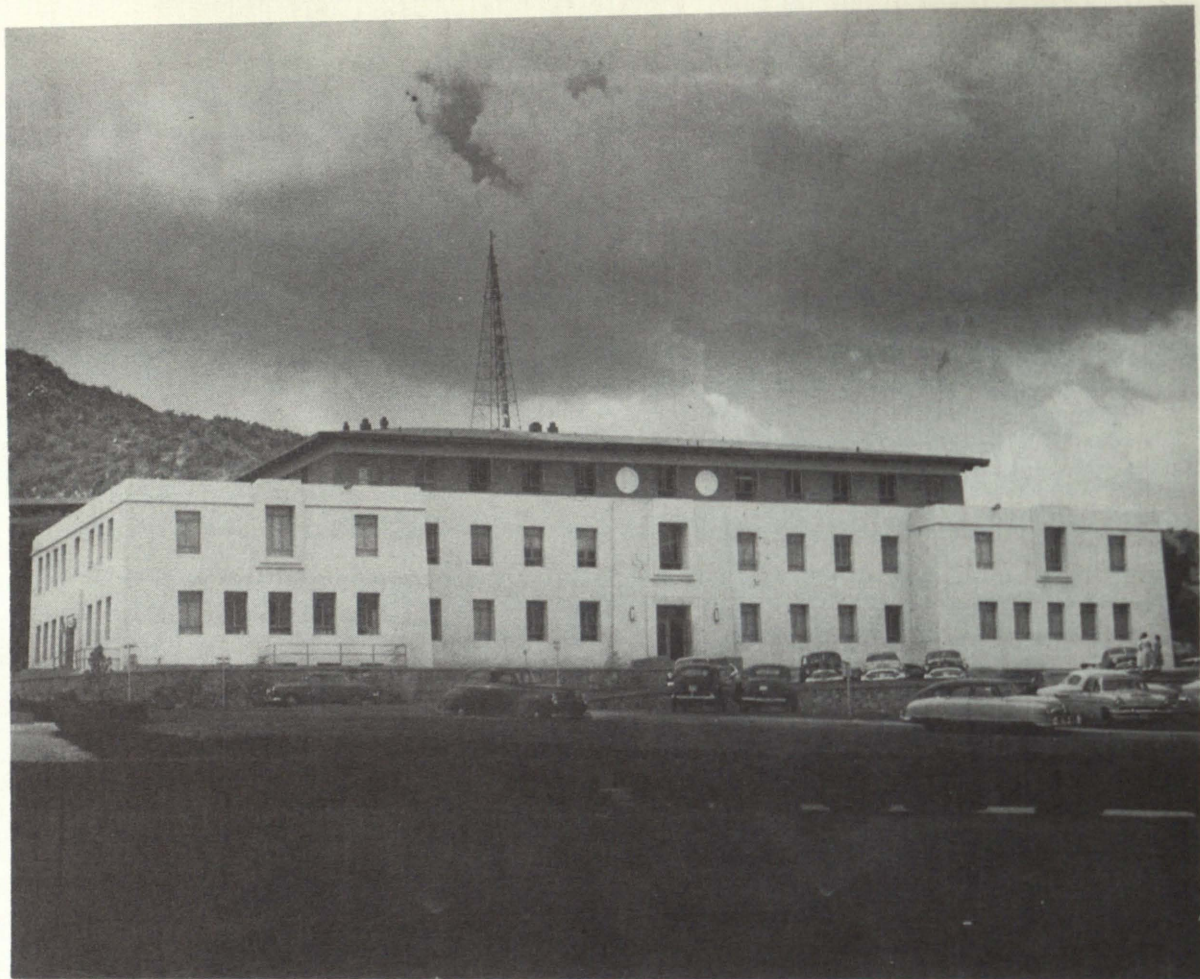
Engineer of Mines
Mining Engineering

Mining-Geology Engineering
Metallurgical Engineering

Civil Engineering
Electrical Engineering

COLLEGE





SCIENCE BUILDING—Houses the departments of chemistry and biological sciences with complete modern laboratories.

MAGOFFIN AUDITORIUM—Scene of college dramatic productions and the music department.





COTTON MEMORIAL—In the art galleries of this building may be seen both Texas Western students' and traveling exhibits. All classes in art such as design, painting, and sculpture meet here.

STUDENT UNION BUILDING—Besides the lounges, ballroom, snack bar, and recreation room, the bookstore, the Office of Student Publications, of the Ex-Student's Association, of Publicity, of the Dean of Women, and the Dean of Student Life are located in the building known to students as the SUB.





ADMINISTRATION BUILDING—Offices of the Dean of Arts and Sciences, the Registrar, and the Business Manager. The college library is located on the second floor.

PHYSICS BUILDING—Contains math, physics, and languages departments.





SEAMON HALL—One of the oldest buildings on campus, it houses the engineering library and laboratories.

BURGESS HALL—One of the oldest buildings on campus, it houses the engineering library and laboratories.





MUSEUM—Among the many collections are the geological and archeological which feature the Southwest.

GEOLOGY BUILDING—In the classrooms and laboratories of this building, students receive a general or thorough background in the study of the formation of the earth.





ENGINEERING BUILDING—One of the older buildings on campus, with the Office of the Dean of Engineering, the powerhouse, and the drawing labs.

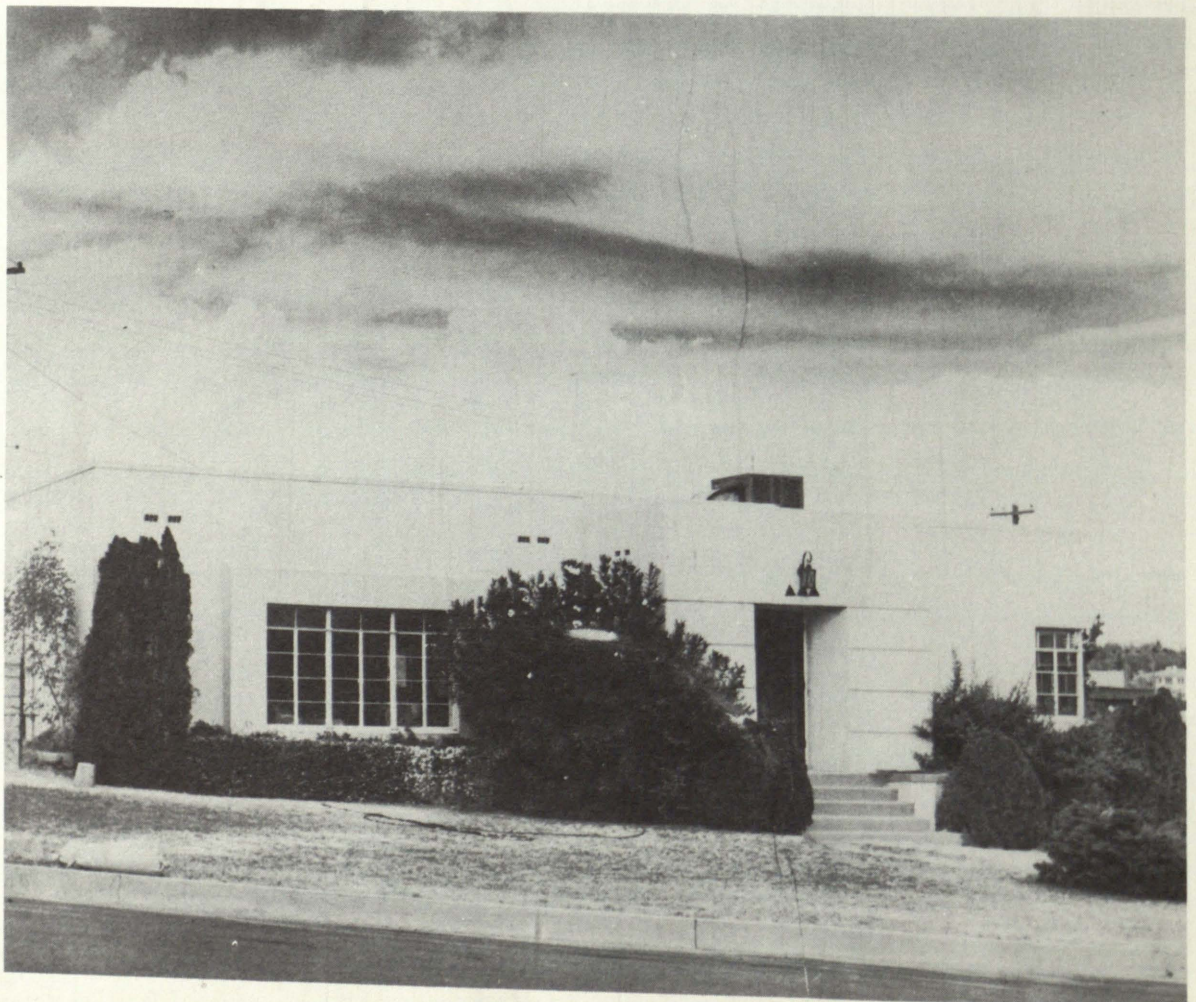
KELLY HALL—Home of KVOF radio station, the Prospector Office, and classrooms.





LODGE OF CHI OMEGA SORORITY.

LODGE OF DELTA DELTA DELTA SORORITY.





LODGE OF ZETA TAU ALPHA SORORITY.

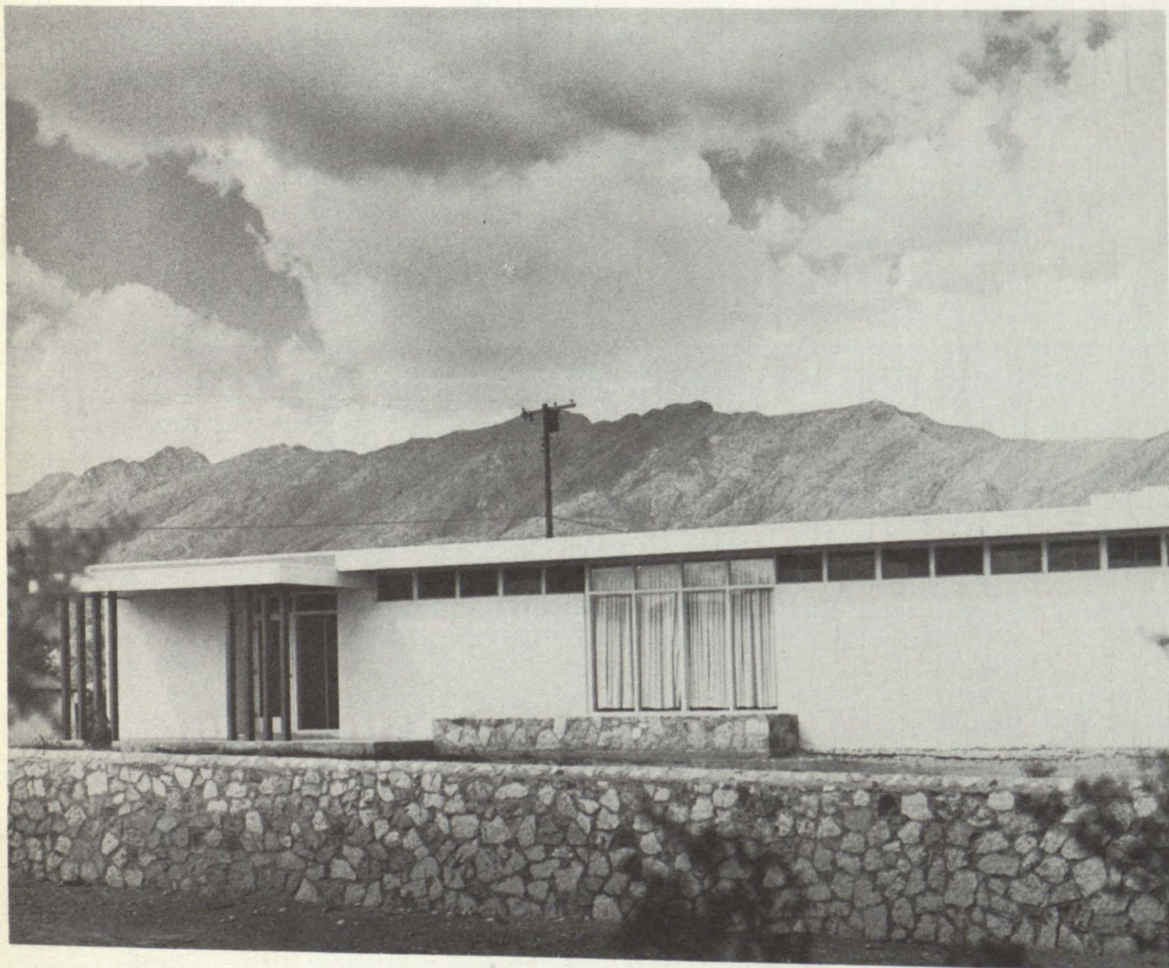
LODGE OF DELTA GAMMA SORORITY.





The home of W. H. Elkins, President of Texas Western College.

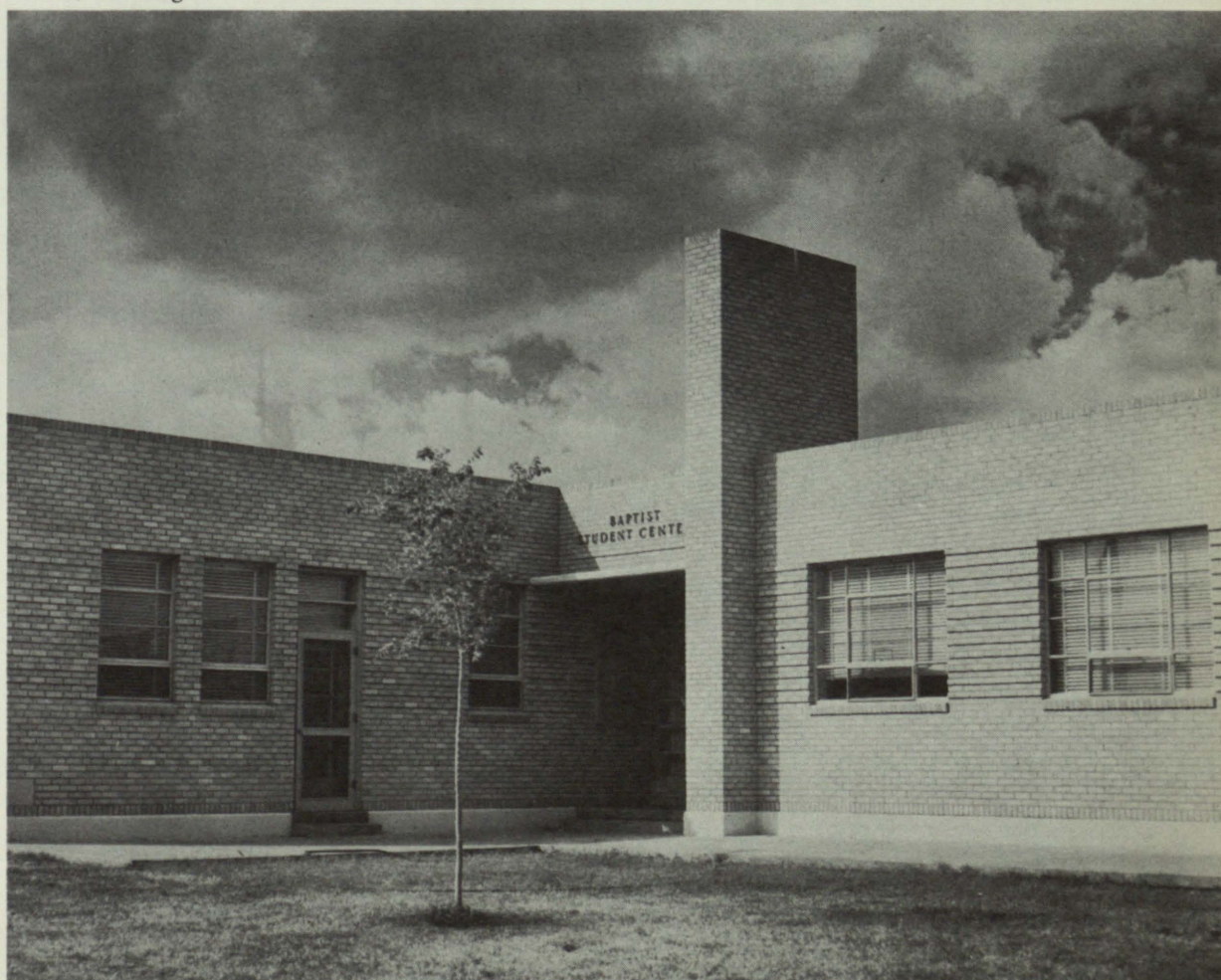
LODGE OF KAPPA SIGMA FRATERNITY.





The residence of TWC's business manager, Mr. A. A. Smith.

BAPTIST STUDENT CENTER—A rambling, yellow brick building containing a classroom, library, game room, and lounge.

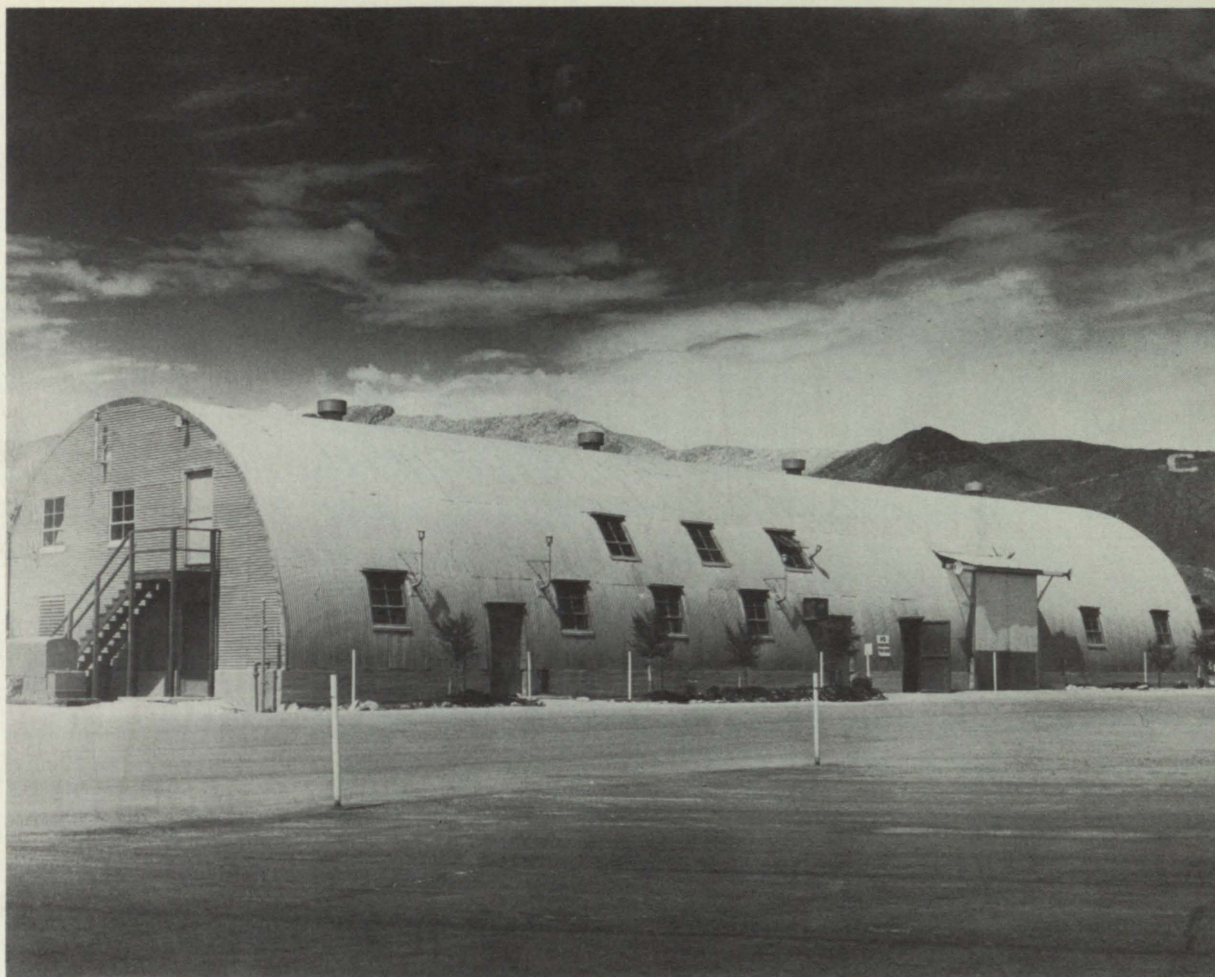




WOMEN'S GYM—With adjoining swimming pool and tennis courts.

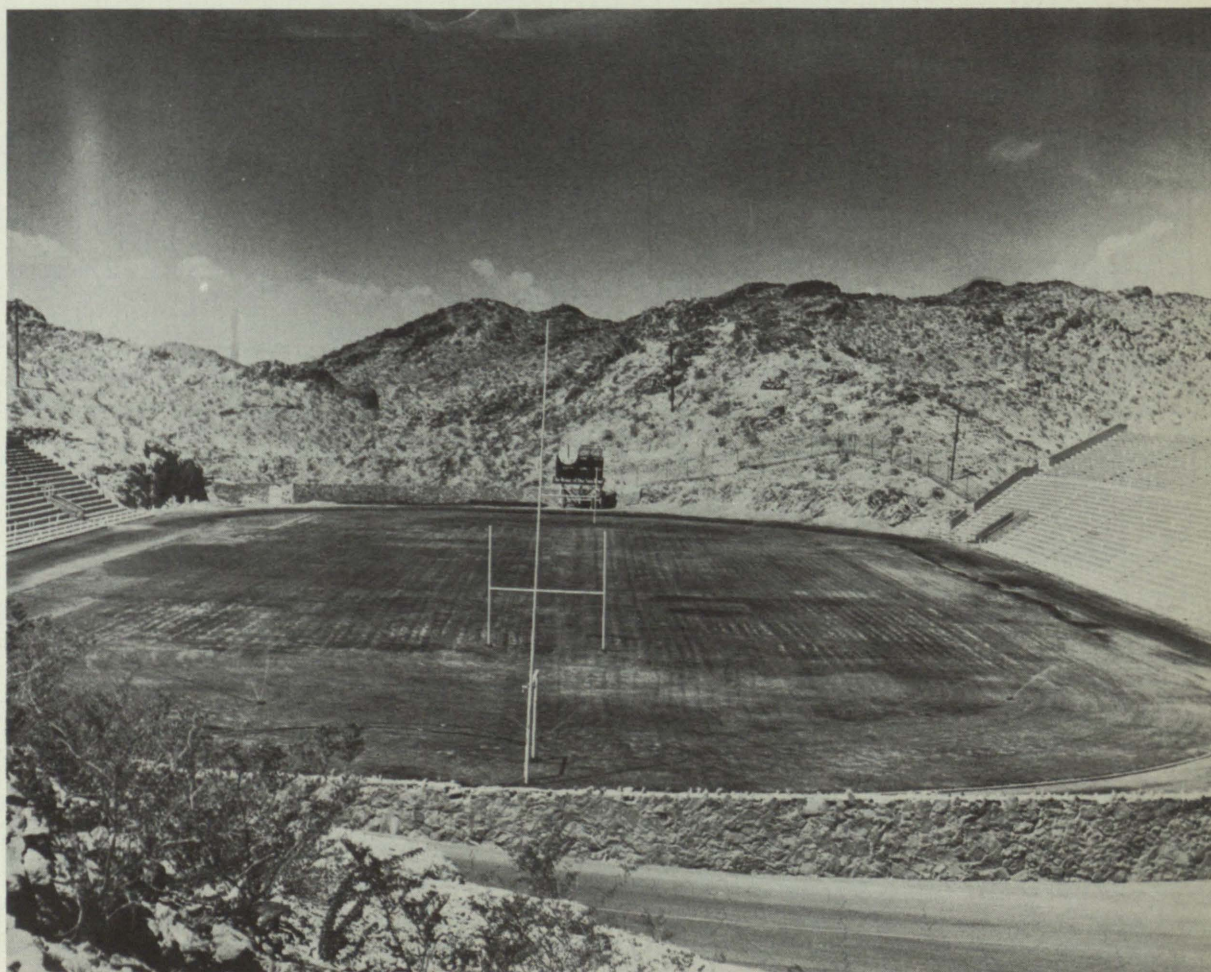
BELL HALL—The women's dormitory with the student cafeteria in the annex on the left.





THE MILITARY SCIENCE AND TACTICS BUILDING.

KIDD FIELD—Scene of the Annual Sun Bowl Game and the home of the Texas Western Miners.





MINER'S HALL—The men's dormitory for TWC athletes.

BENEDICT HALL—Men's dormitory. The campus Health Center is located on the ground floor.





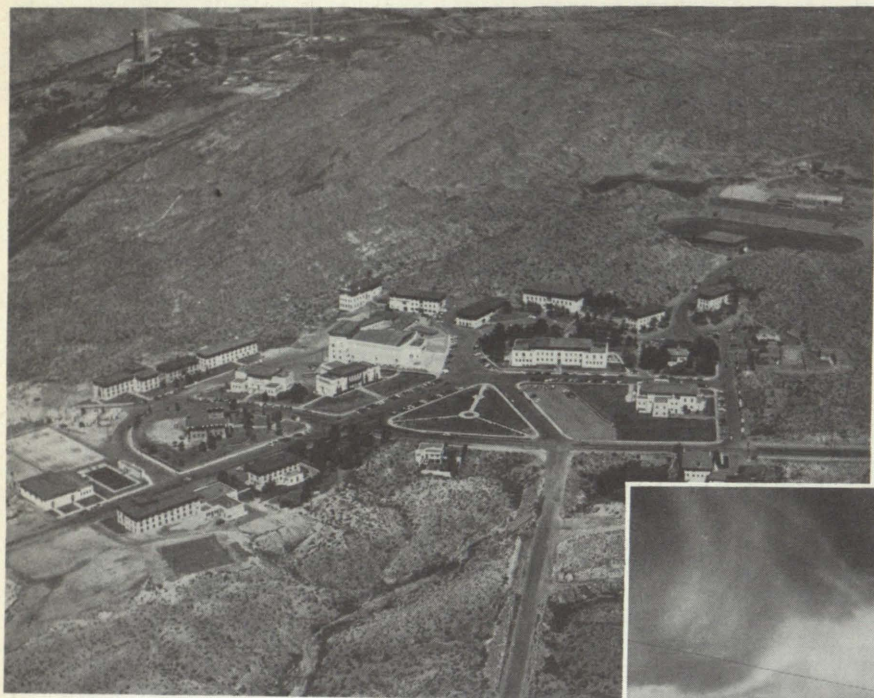
HUDSPETH HALL—Men's dormitory.

WORRELL HALL—Men's dormitory.



68038

LIBRARY
TEXAS WESTERN COLLEGE
EL PASO, TEXAS



An aerial view of the campus

The men's dormitories on the west side of the campus.

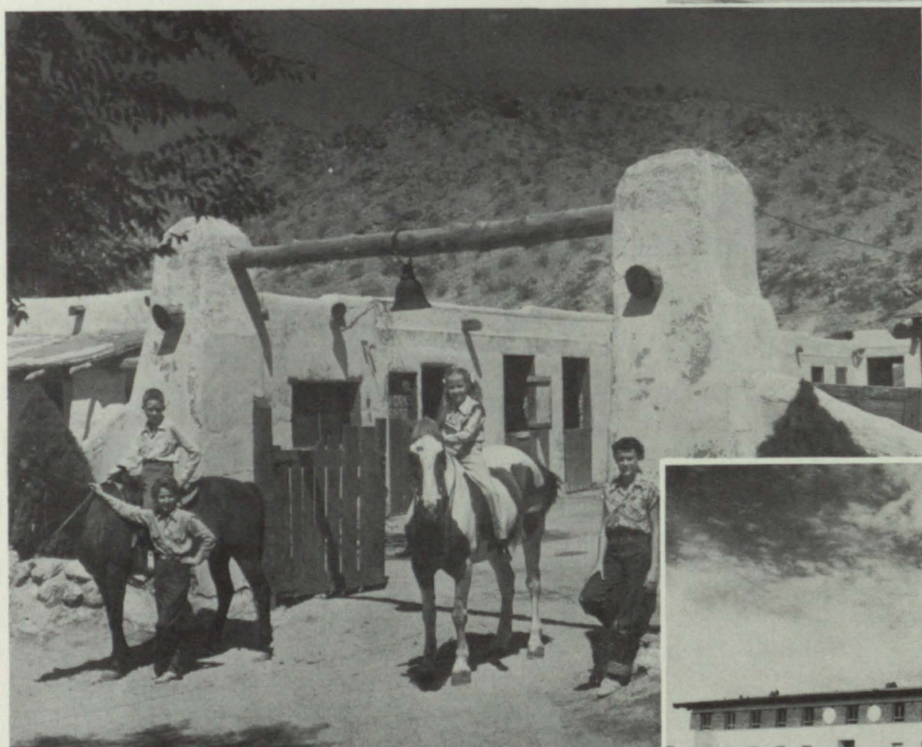
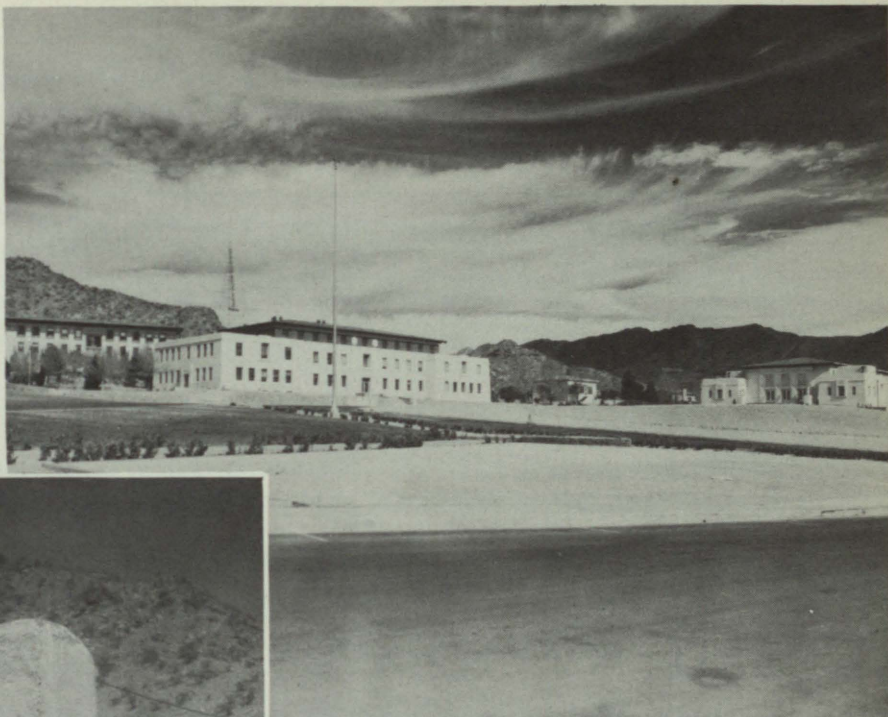


Another view from the SUB

The African animals collection in the museum.

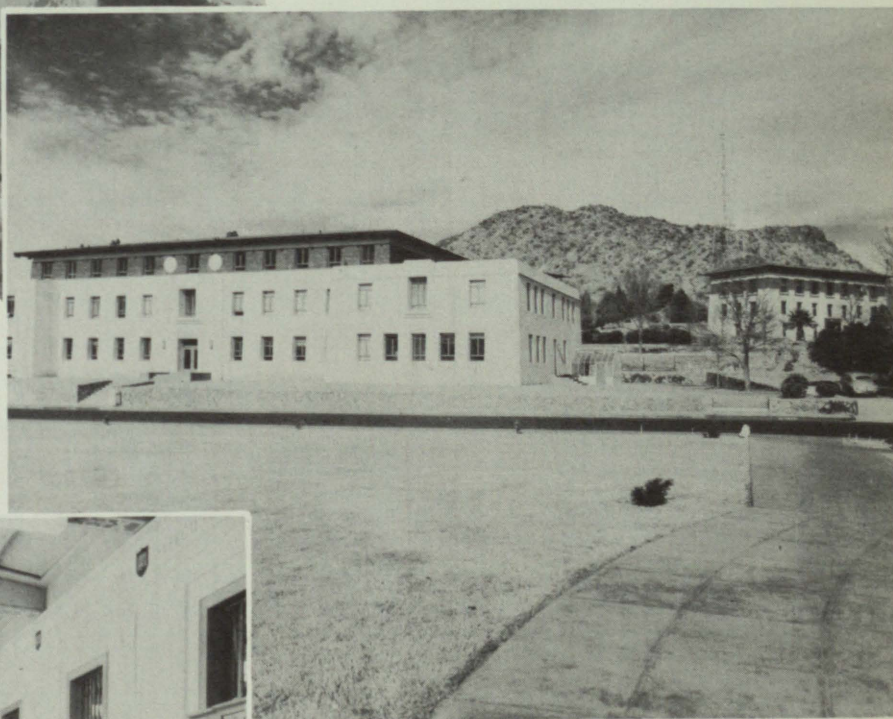


A view of the campus with Mt. Franklin in the background



Children's riding class at the Texas Western stables.

A part of the campus as it looks from the front of the SUB



The library reading room at seven thirty in the morning.