



Flowsheet

1949

the flowsheet

for

1949

JO FREEMAN
Editor

GEORGE WARDY
Business Manager

WALLACE E. SNELSON
Faculty Advisor

JUDSON F. WILLIAMS
Director of Publications

*Published by Student Publication, Inc.
The College of Mines and Metallurgy*





Dedication

JOHN FRASER GRAHAM

For instilling into his students the best possible technical and social criteria, this book is respectfully dedicated to Professor John Fraser Graham, Chairman of the Department of Mining and Metallurgy.



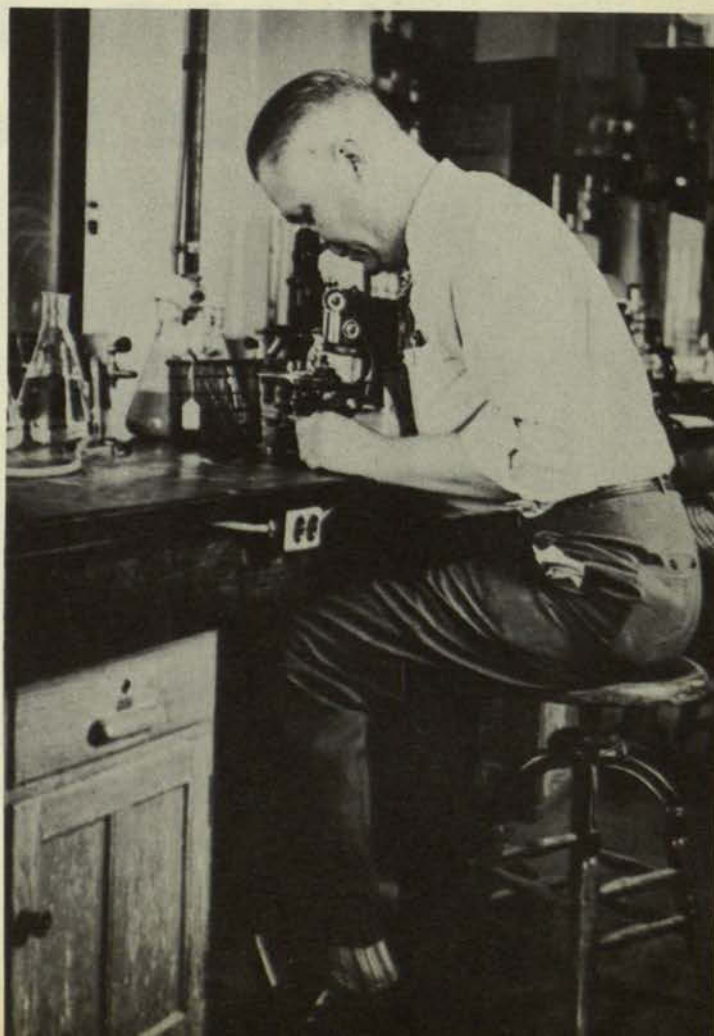


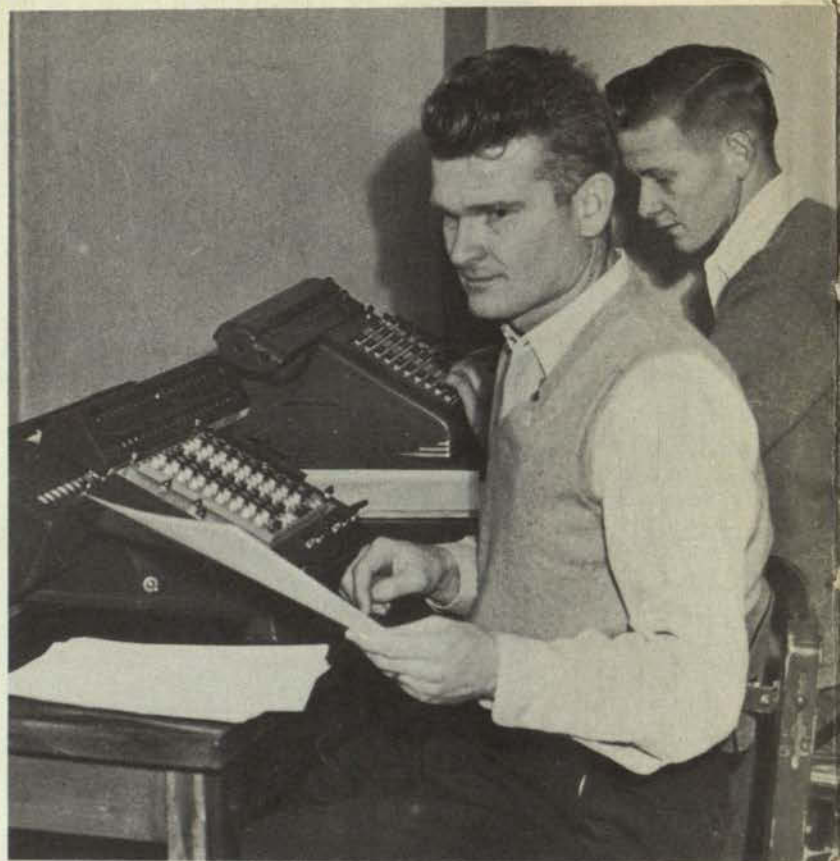
Department of Art





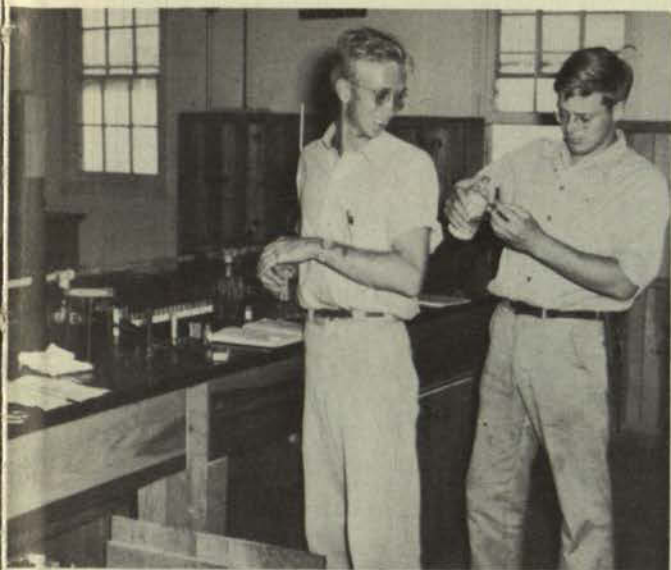
**Department
of
Biological
Sciences**



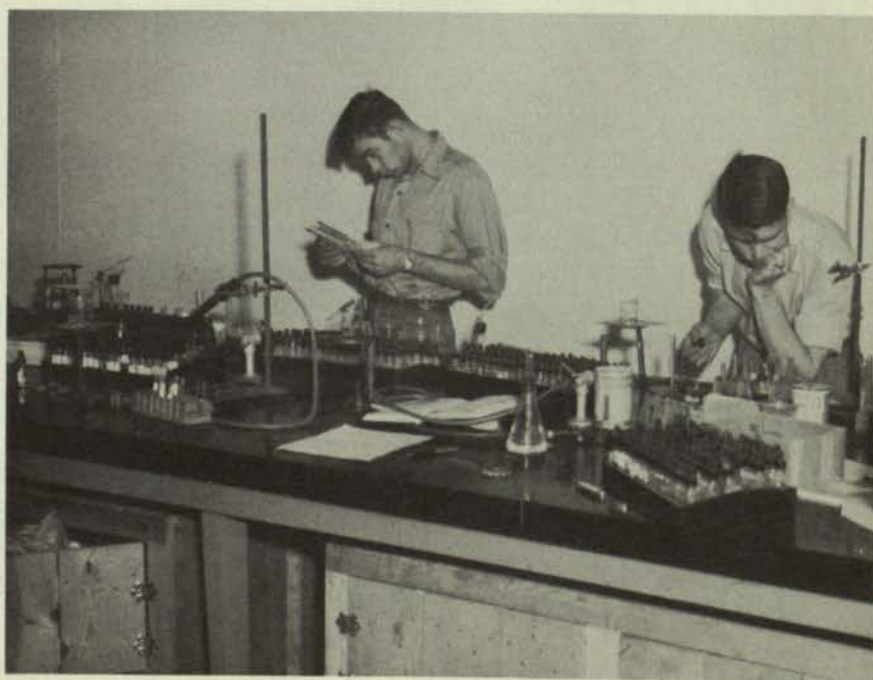
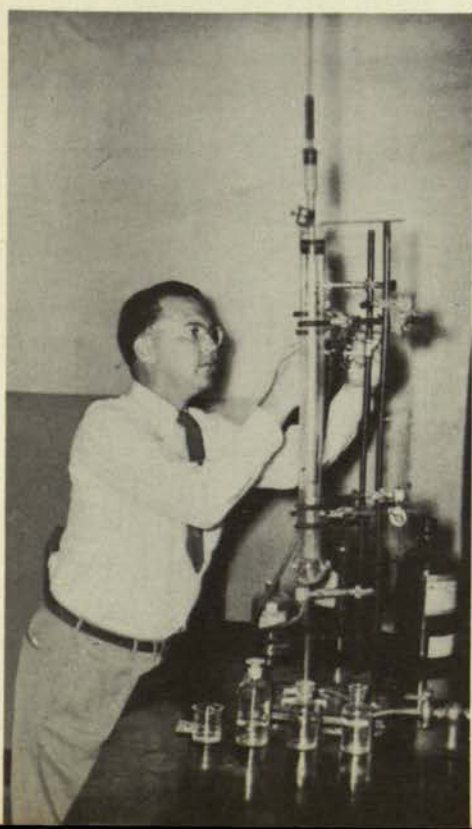
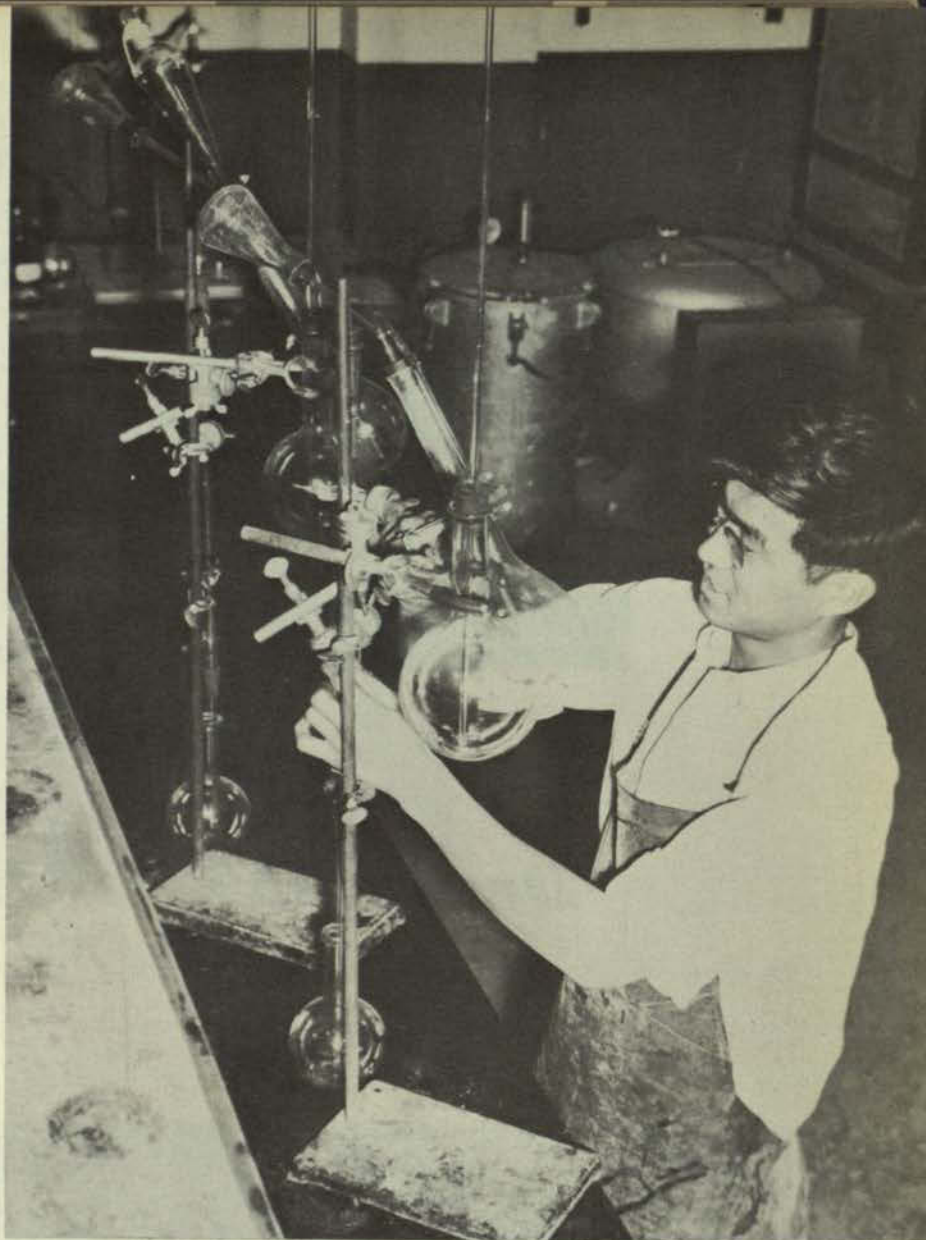


Department of Business Administration and Economics





**Department
of
Chemistry**





Department of Education





Department of Engineering

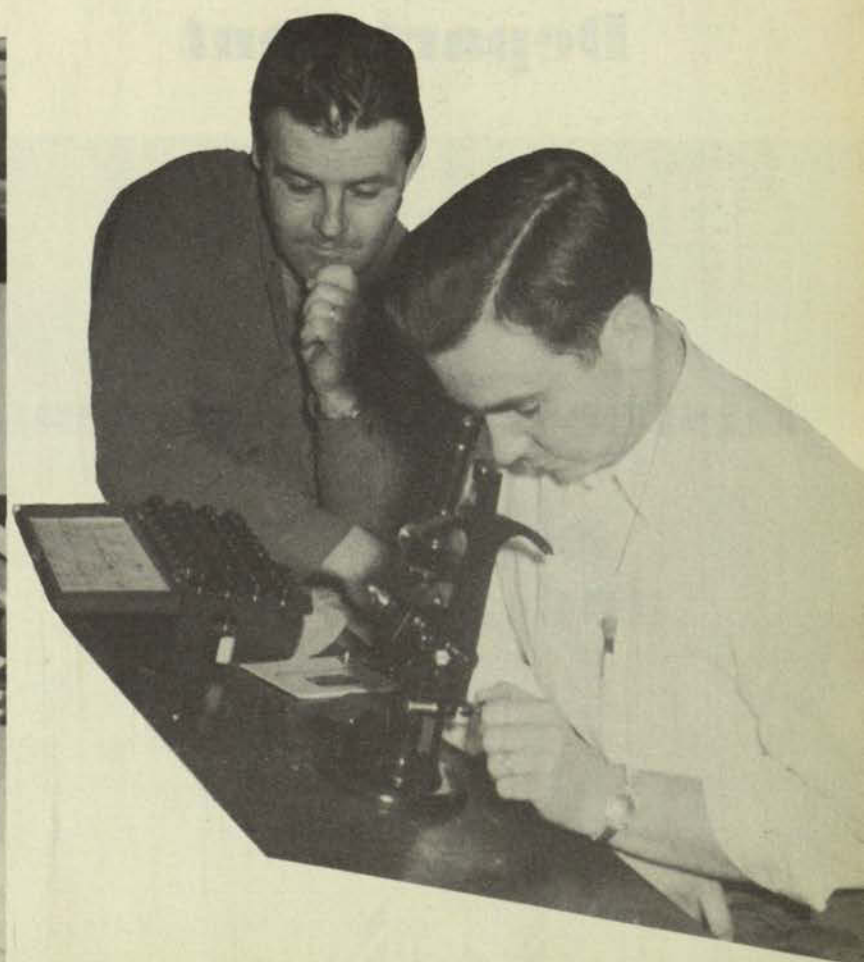
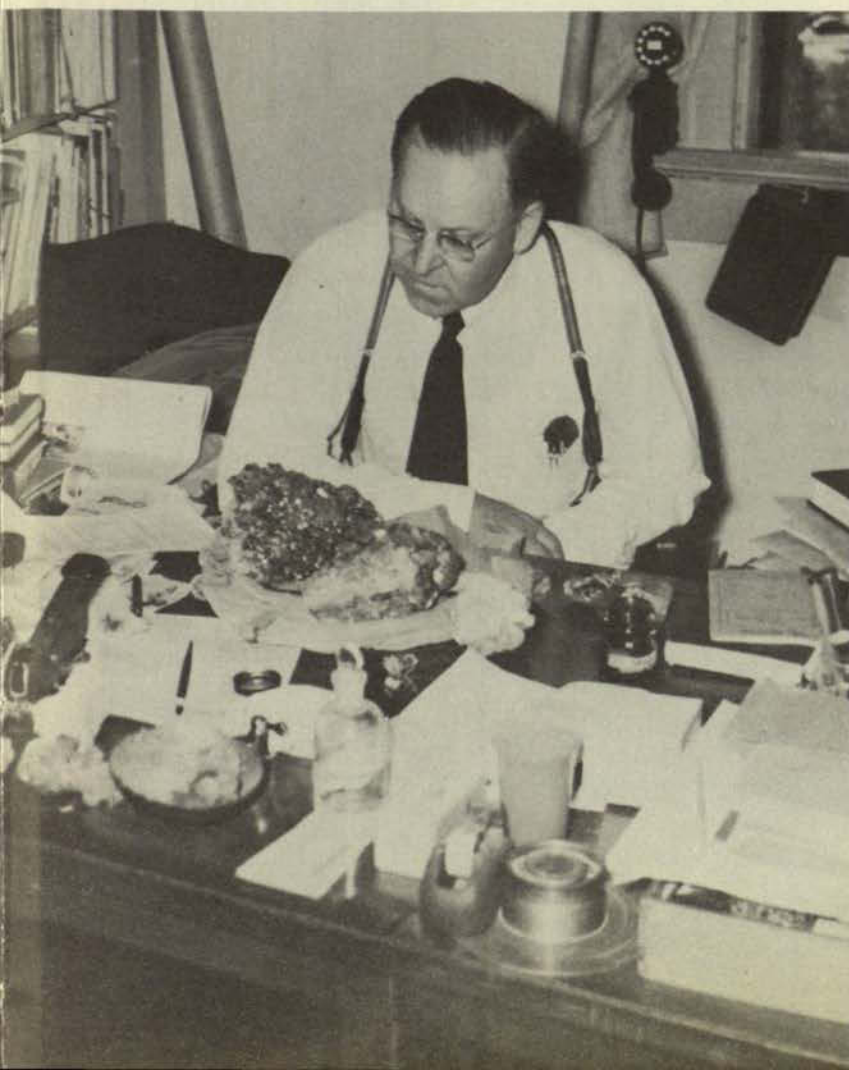
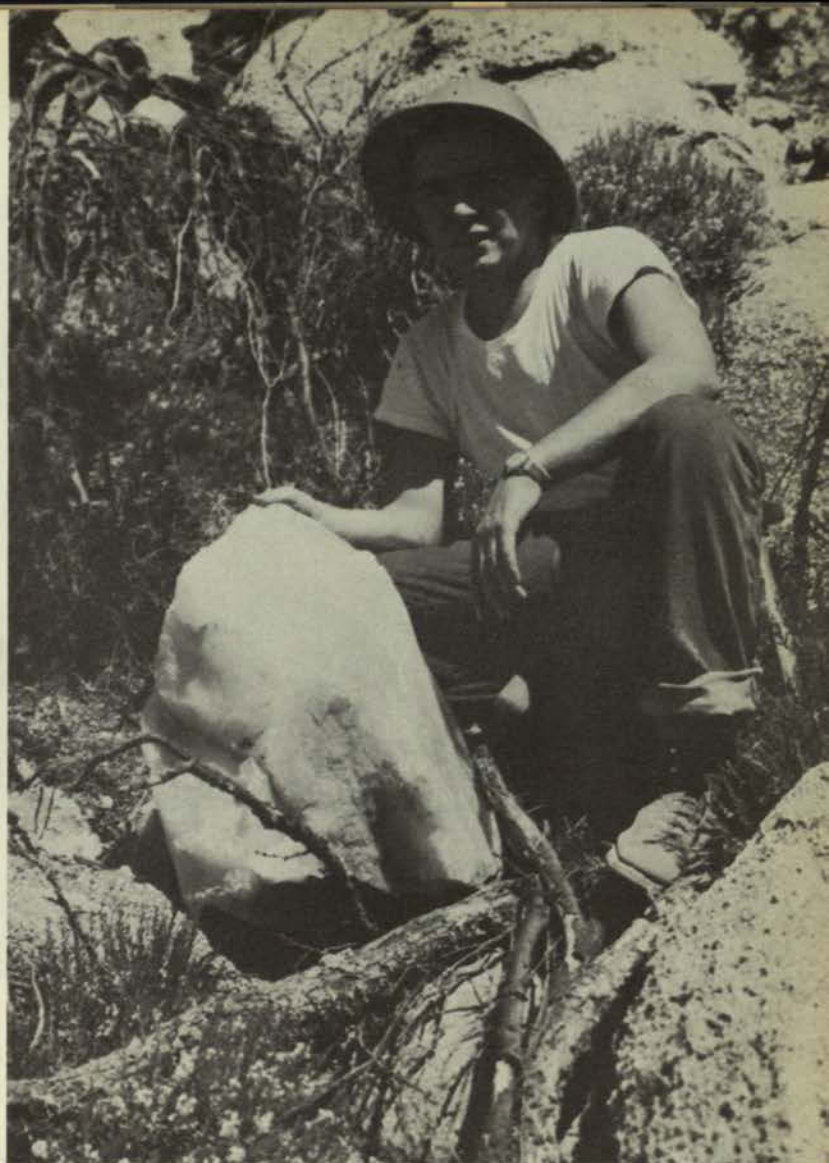




Department
of
English and Speech

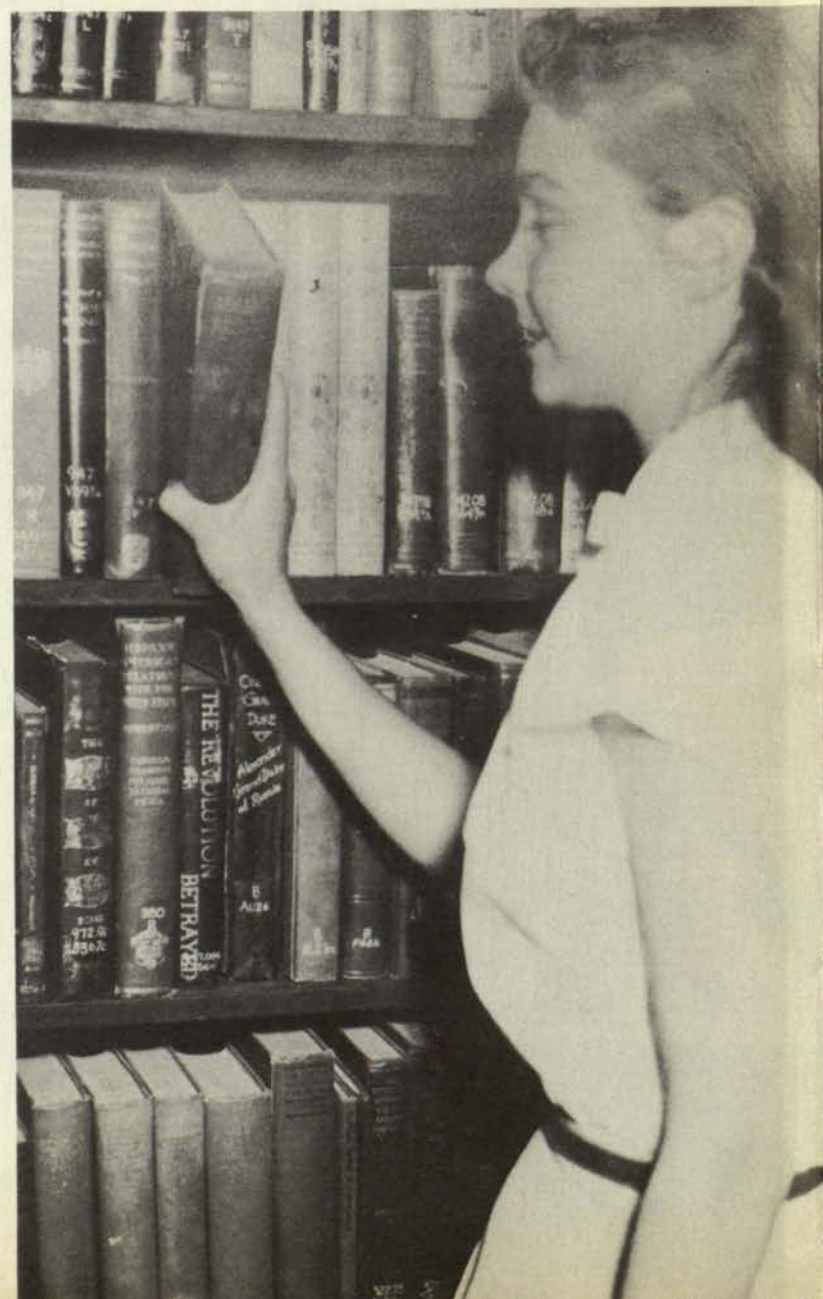


Department of Geology





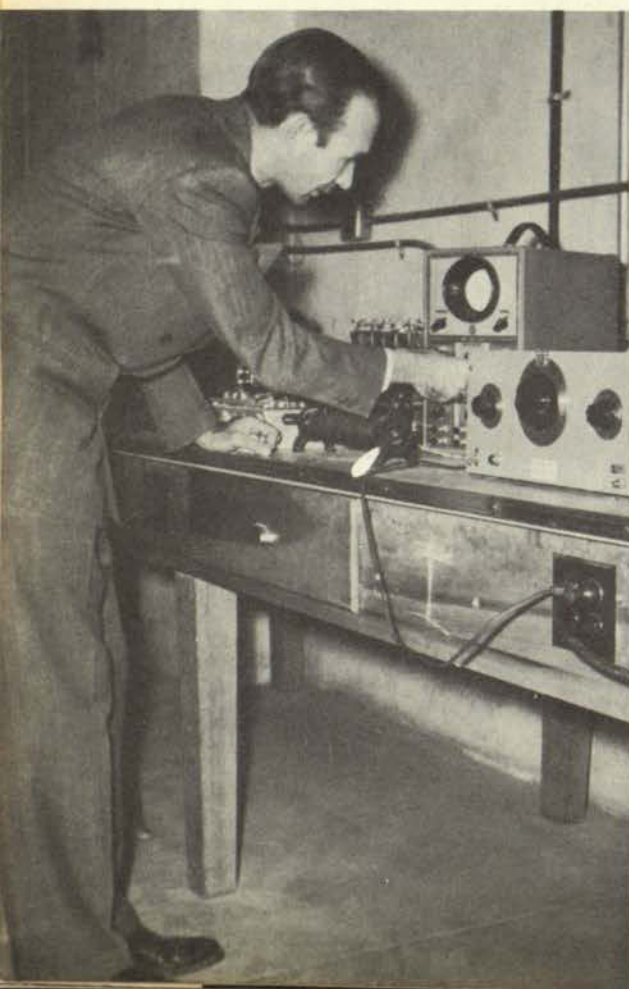
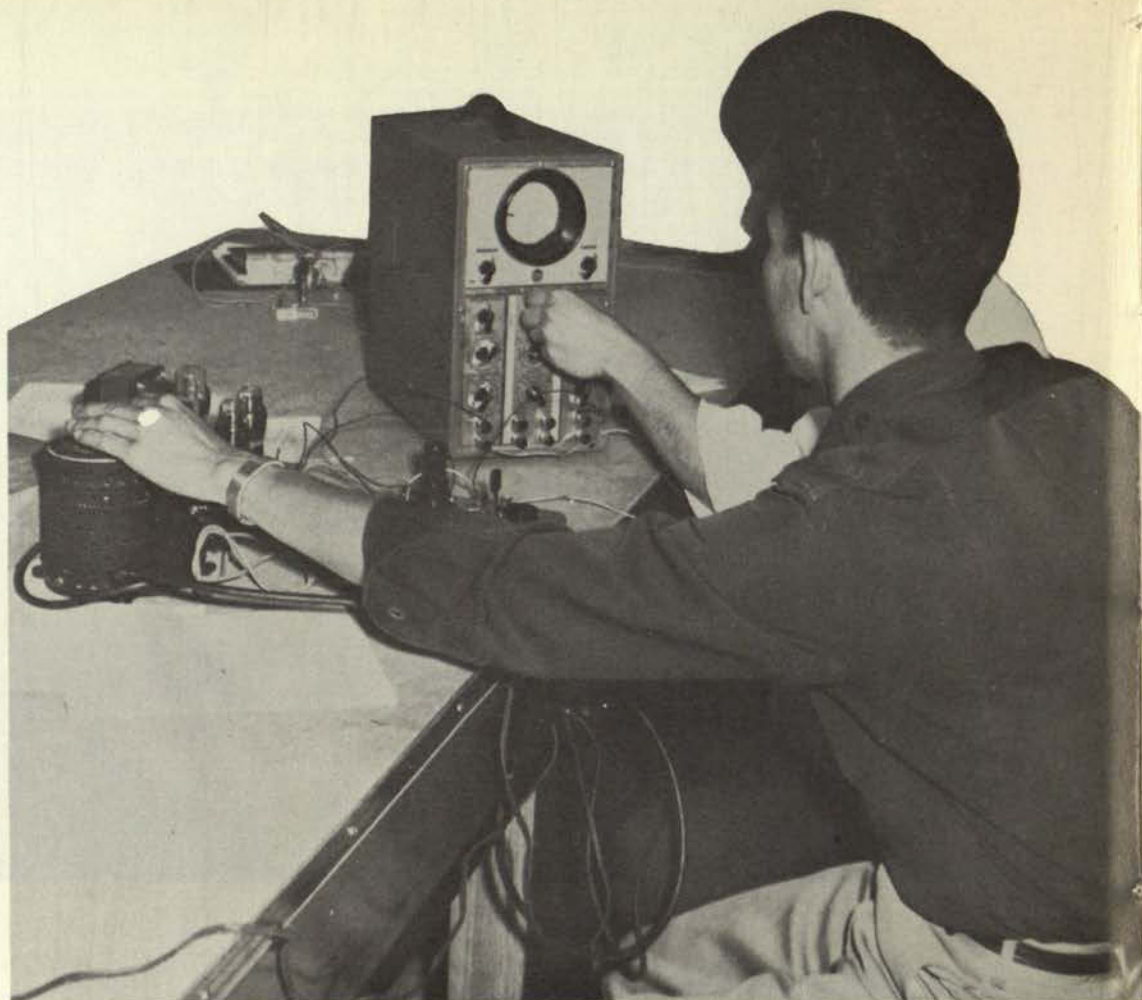
**Department
of
History, Government
and Sociology**





Department of Journalism and Radio

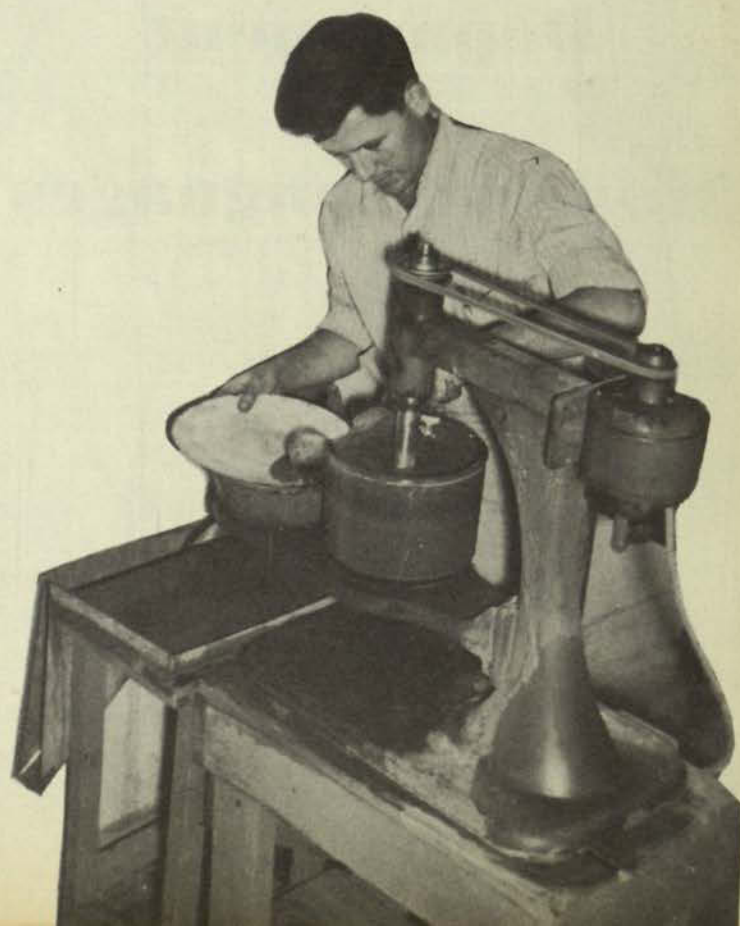




Department
of
Math and Physics



**Department
of
Mining
and
Metallurgy**





**Department
of
Modern Languages**





Department
of
Music





Department of
Philosophy and Psychology





Department of
Recreation, P. E. and Health

