

9-2016


# Residential Electricity Demand in El Paso: 1977-2014

Thomas M. Fullerton Jr.  
*University of Texas at El Paso*, tomf@utep.edu

David R. Macias  
*El Paso Electric Company*, david.macias@epelectric.com

Adam G. Walke  
*University of Texas at El Paso*, agwalke@utep.edu

Follow this and additional works at: [https://digitalcommons.utep.edu/border\\_region](https://digitalcommons.utep.edu/border_region)

 Part of the [Econometrics Commons](#), [Regional Economics Commons](#), and the [Urban Studies Commons](#)

Comments:

Technical Report TX16-2

A revised version of this study is forthcoming in *Journal of Regional Analysis & Policy*.

---

## Recommended Citation

Fullerton, Thomas M. Jr.; Macias, David R.; and Walke, Adam G., "Residential Electricity Demand in El Paso: 1977-2014" (2016).  
*Border Region Modeling Project*. 33.  
[https://digitalcommons.utep.edu/border\\_region/33](https://digitalcommons.utep.edu/border_region/33)

This Article is brought to you for free and open access by the Department of Economics and Finance at DigitalCommons@UTEP. It has been accepted for inclusion in Border Region Modeling Project by an authorized administrator of DigitalCommons@UTEP. For more information, please contact [lweber@utep.edu](mailto:lweber@utep.edu).

The University of Texas at El Paso  
**UTEP Border Region  
Modeling Project**

Technical Report TX16-2

# **Residential Electricity Demand in El Paso: 1977-2014**







# **The University of Texas at El Paso**

## **Residential Electricity Demand in El Paso: 1977-2014**

---

Technical Report TX16-2  
UTEP Border Region Modeling Project

This technical report is a publication of the Border Region Modeling Project and the Department of Economics & Finance at the University of Texas at El Paso. For additional Border Region information, please visit the [www.academics.utep.edu/border](http://www.academics.utep.edu/border) section of the UTEP web site.

Please send comments to Border Region Modeling Project - CBA 236, Department of Economics & Finance, 500 West University, El Paso, TX 79968-0543.

UTEP does not discriminate on the basis of race, color, national origin, sex, religion, age, or disability in employment or the provision of services.

**University of Texas at El Paso**

Diana Natalicio, President  
Howard Daudistel, Interim Provost  
Roberto Osegueda, Vice Provost

**UTEP College of Business Administration**

Border Economics & Trade  
Bob Nachtmann, Dean  
Steve Johnson, Associate Dean  
Gary Frankwick, Associate Dean  
Tim Roth, Templeton Professor of Banking & Economics

## **UTEP Border Region Econometric Modeling Project**

### **Corporate and Institutional Sponsors:**

**Hunt Communities**

**El Paso Water Utilities**

**UTEP College of Business Administration**

**UTEP Department of Economics & Finance**

**City of El Paso Office of Management & Budget**

**UTEP Hunt Institute for Global Competitiveness**

**UTEP Center for the Study of Western Hemispheric Trade**

Special thanks are given to the corporate and institutional sponsors of the UTEP Border Region Econometric Modeling Project. In particular, El Paso Water Utilities, Hunt Communities, and The University of Texas at El Paso have invested substantial time, effort, and financial resources in making this research project possible.

Continued maintenance and expansion of the UTEP business modeling system requires ongoing financial support. For information on potential means for supporting this research effort, please contact Border Region Modeling Project - CBA 236, Department of Economics & Finance, 500 West University, El Paso, TX 79968-0543.



# Residential Electricity Demand in El Paso: 1977-2014\*

Thomas M. Fullerton, Jr.<sup>a</sup>, David R. Macias<sup>b</sup>, and Adam G. Walke<sup>a</sup>

<sup>a</sup> Department of Economics & Finance, University of Texas at El Paso, El Paso, TX 79968-0543, Telephone 915-747-7747, Facsimile 915-747-6282, Email tomf@utep.edu; agwalke@utep.edu

<sup>b</sup> Investor Relations Department, El Paso Electric Company, El Paso, TX 79901, Email david.macias@epelectric.com

\* A revised version of this study is forthcoming in *Journal of Regional Analysis & Policy*.

## Abstract

This study analyzes the demand for residential electricity in El Paso, Texas, USA. Annual data are provided by El Paso Electric Company covering the period from 1977 to 2014. This study reports a negative long-run income elasticity for residential electricity demand. Per customer residential electricity usage declines by 0.68 percent for every 1-percent increase in real per capita income over the long run, indicating that electricity is treated as an inferior good by households in this metropolitan economy. That result runs counter to many earlier studies, but corroborates recent empirical evidence for Seattle, Washington and other regions of the United States. Further examination of residential electricity consumption behavior is warranted. Rate policy issues are also discussed.

## JEL Categories

Q41, Energy Demand; R15, Regional Econometrics; M21, Business Economics

## Key Words

Residential Electricity Demand, Urban Economics, Applied Econometrics

## Acknowledgements

Financial support for this research was provided by Texas Department of Transportation, City of El Paso Office of Management & Budget, El Paso Water Utilities, UTEP Center for the Study of Western Hemispheric Trade, Hunt Institute for Global Competitiveness, and a UTEP College of Business Administration Faculty Research Grant. Helpful comments and suggestions were provided by Doyle Smith, Dennis Bixler-Marquez, Richard Cebula, and an anonymous referee.

## Introduction

Classical demand theory systematically includes income as a primary determinant (Barten, 1968). Most of the existing empirical literature on the residential demand for electricity reports a positive relationship between income and consumption, suggesting that electricity is a normal good (Dergiades and Tsoulfidis, 2008). However, some studies indicate that electricity is an “inferior good” with sales that are negatively correlated with incomes (Roth, 1981). That includes evidence that residential electricity may behave like an inferior good in the United States as a whole (Contreras et al., 2009). Research conducted at the regional level may shed additional light on the responsiveness of residential electricity demand to changes in income.

This study examines the residential demand for electricity with data for a low income metropolitan economy, El Paso, Texas. Most utilities do not serve native loads that encompass entire states and, therefore, are more interested in localized service regions. Another reason to study electricity demand at the metropolitan level is that different regions across nations and within individual states may exhibit considerable economic and customer base heterogeneity (Provenzano and Walasek, 1981; Cebula, 2012). Income heterogeneity may lead to biased estimators, especially in large states such as Texas where earnings disparities are quite large (Wooldridge, 2009; Ayllon, 2013).

El Paso Electric Company provides electricity service to El Paso County, Texas. The company is an investor-owned utility providing electric energy to approximately 380,000 retail customers in a 10,000 square mile area of the Rio Grande Valley in west Texas and southern New Mexico. El Paso Electric has a net dependable generating capability of approximately 2,010 megawatts (MWs) and a 2015 native peak demand of 1,787 MWs. New generation is already under construction to allow the company to keep pace with an estimated 2.9 percent compound annual growth rate in MW peak demand during the 2011 to 2020 forecast period (Patton, 2012).

An autoregressive distributed lag (ARDL) bounds testing approach is used to analyze El Paso residential electricity usage. This approach is relatively attractive because it allows estimating both long-term and short-term consumption relationships within a single modeling framework (Halicioglu, 2007). Another useful feature of this general approach is that its informational requirements are typically not very extensive. For many regions in the United States and elsewhere, county and municipal data are much less abundant than macroeconomic variables, making it difficult to carry out econometric analyses that require substantial statistical detail. For El Paso Electric,

annual frequency data from 1977 to 2014 are available to complete the study.

A three-year out of sample forecast is used to evaluate the rates of growth in demand that can be expected given a continuation of recent historical trends in the explanatory variables. Correctly forecasting the demand for electricity consumption is crucial for electric utilities throughout the United States. The construction of a new generating unit to serve increases in native load demand almost always requires several years to complete. Failure to file far enough in advance for a new permit to build generating plant additions will force utilities to have to engage in expensive off-system power purchases. Knowledge of the demand for electricity and the accurate estimation of future demand growth have important economic and regulatory repercussions and are critical elements in the planning process for all electric companies (Dortolina and Nadira, 2005).

## Literature Review

The first econometric studies of the demand for electricity can be traced back to Houthakker (1951). Results in that study point to relatively strong sensitivity of British electricity usage to changes in price and income. Halvorsen (1975) finds that United States electricity demand is highly responsive to rate changes. Estimates of the long-run price elasticity range between -1.00 to -1.21, and are statistically significant at the 1-percent level. In another nationwide study of demand conditions in the United States, Anderson (1973) highlights the importance of increasing utilization of central heating and electrical appliances in boosting residential electricity consumption.

Some studies of residential electricity demand utilize survey data to provide insights into the effects of specific household characteristics. The short-run income elasticity of demand is examined in a survey study conducted by Branch (1993). The income coefficient is positive and both the



income and price elasticities are lower than one in absolute value. Other variables that raise household electricity usage include family size, family member ages, and the number of rooms in the home. Alberini et al. (2011) use a mixed panel multi-year cross-section of households to study electricity demand. Short-run price elasticity estimates are relatively large in magnitude, ranging from -0.67 to -0.86, while the estimated income elasticities are near zero. In another survey-based study, Archibald et al. (1982) examine seasonal variation in electricity consumption. Empirical results suggest that price elasticity is higher in absolute value during periods of peak demand and that income elasticities are positive, implying that residential electricity is a normal good.

A re-examination of residential electricity demand is undertaken by Houthakker (1980) with pooled cross-sectional and time series state level data. Substantial diversity among price and income coefficients at the regional level is documented. Owing to variations in the demand for electricity across geographic areas, several studies have focused on particular regions. Using household data from Quebec, Bernard et al. (2011) report statistically significant results that indicate that demand is highly elastic with respect to the price of electricity and moderately inelastic with respect to the prices of oil and natural gas. Interestingly, income elasticities are insignificant at the 5-percent level. In a study of five southern states in the United States, Hsing (1994) estimates residential demand for electricity using a cross-sectional and time-wise autoregressive model. Short-run elasticities for price and income are found to be -0.239 and 0.397, respectively.

While most studies on the topic report evidence that electricity is a normal good, some researchers have obtained results that challenge this notion. Wilson (1971) reports a statistically significant inverse relationship between income and household electricity usage for a sample of 77 cities in the United States. Roth (1981) employs municipal

electricity consumption data for a single electric utility in the southwestern United States. Results indicate that residential electricity is treated as an inferior good. In a study covering all 50 states and the District of Columbia, Contreras et al. (2009) also finds that residential electricity is an inferior good. The study uses the average price of electricity, number of households, personal income, census region dummy variables, and weather conditions to estimate electricity demand. The results also indicate that different regions of the United States display similar demand characteristics for electricity and exhibit less heterogeneity than previous studies indicate.

The issue of whether to employ marginal or average electricity prices in econometric analysis has long been a source of debate (Roth, 1981; Alberini et al., 2011). The absence of accurate rate histories leads many researchers to use the average price of electricity in regression models (Shin, 1985). Cicchetti and Smith (1975) provide evidence that average revenue measures can be employed reliably as price variables. Even though allowances for simultaneity may be necessary, average price variables in place of marginal prices are not found to cause specification errors.

A number of studies examine whether consumers respond to marginal electricity prices, which may be difficult to discern, or to average prices. Shin (1985) argues that consumers' response to marginal price changes is complicated by imperfect information owing to the complexity of rate structures and billing statements. Empirical results indicate that consumers respond to average rates as inferred from monthly electric bills. Ito (2014) provides further evidence that consumers respond to the average price of electricity rather than marginal price. Estimation results indicate that, when marginal price and average price change in opposite directions, residential electricity usage responds to the average price. A survey by Faruqui et al. (2010) attempts to determine if consumption is altered when customers possess real time

knowledge of the marginal price of the electricity. The study evaluates twelve utility pilot programs that use In-Home Displays (IHDs) to give direct feedback on the price of electricity at the moment of consumption. Results indicate that energy savings range from three to thirteen percent when real-time knowledge of price is made available to the consumer, but it is unclear if consumers will use the displays to alter long-term usage patterns.

Several studies seek to identify both the short-term and long-term effects of various explanatory variables on electricity demand. Silk and Joutz (1997) use an error correction approach to model annual US residential electricity demand from 1949 to 1993. Long-run parameter estimates indicate that alternative fuel sources have elasticities of less than 0.05. The small magnitude of this effect may be due to constraints on consumer ability to switch fuel sources. Long-run elasticities for price and income are found to be -0.48 and 0.52, respectively, and short-run elasticities are about one-half of those found in the long-run model. Taylor (1975) notes that long-term price and income elasticities of electricity demand are often larger than short-run elasticities. While the stock of electricity consuming capital is fixed in the short-run, it is easier to modify the demand for electricity in the long-run by adjusting household appliance stocks.

Narayan et al. (2007) employ a panel cointegration technique to estimate income and price elasticities for per capita residential electricity consumption in high-income countries. Estimated long-run elasticities of demand are 0.31 with respect to income and -1.45 with respect to price. The magnitude of the price elasticity estimate indicates that rate increases may be helpful in attaining energy conservation goals. The elasticity of the substitute good price is 1.77. In the short-run, unexpectedly, all of the estimated parameters carry negative signs though none of these coefficients are found to be statistically significant at the 5-percent level. In a similar study, Dergiades and Tsoulfidis (2008) include the stock of occupied housing as

an explanatory variable in order to proxy the stock of household appliances. A 1% increase in the per capita occupied stock of housing is found to generate a 1.5% increase in per capita electricity consumption. The long-run income elasticity is found to be 0.27. In the short-run, the income elasticity is much lower at 0.10. The coefficient for the error correction term is -0.363 and indicates that short-run departures from the long run equilibrium will dissipate in 2.75 years. This estimate is very similar to error correction coefficient obtained by Silk and Joutz (1997).

Recent empirical research of residential electricity consumption reports a long-run negative income elasticity for Seattle, Washington (Fullerton et al., 2012). An error correction model is estimated using annual data for the years 1960 to 2007. Data constraints necessitate employing the average price of electricity per kilowatt hour consumed as the rate variable. Empirical results indicate that residential demand is price inelastic in the long-run and the short-run. The long-run income elasticity coefficient is negative and statistically significant at the 1-percent level. This result indicates that households treat electricity as an inferior good in Seattle. In the short-run, a positive income elasticity parameter implies that residential electricity is treated as a normal good. The error correction coefficient is found to be -0.19, suggesting that consumption shocks take approximately 5.2 years to fully dissipate.

This study investigates residential electricity usage for El Paso, Texas. The El Paso metropolitan economy differs substantially from Seattle. Seattle is a high-income economy located in a rainy, coastal, forested area where electricity consumption peaks during winter months. In contrast, El Paso is a land-locked, low-income metropolitan economy, located in a hot, semi-arid desert environment where peak loads occur during summer months. Residential electricity usage in this region may differ substantially from what is observed in Seattle.

## Data

The dependent variables in this analysis are residential electricity consumption measured in kilowatt hours (KWH) per customer and the number of customers billed by El Paso Electric. As previously noted, there is some debate regarding whether the price variable for electricity should be the average price, the marginal price, or both. El Paso Electric currently utilizes a single block residential rate that includes a one cent increase per KWH for summer rates compared to the winter rate. Based on recent empirical evidence that finds consumers respond to the average price (Ito, 2014), and due to a lack of detailed historical marginal rate schedules from prior years, average revenue per KWH is employed as the own price variable. Data for revenue, electricity consumption, and the number of customers are obtained from El Paso Electric Company filings with the Federal Energy Regulatory Commission (FERC). Annual frequency data from 1977 to 2014 are utilized in the analysis.

Some regions of the United States do not offer energy sources that are viable alternatives to electricity. For example, utilities that are able to generate electricity via hydroelectric plants observe lower costs per kilowatt hour, and substitute goods such as natural gas are usually not competitive. In the case of El Paso County, natural gas serves as a substitute good and many households use it for multiple purposes. Accordingly, the price for residential natural gas is included in the model specification to avoid omitted variable bias (Shin, 1985; Hsing, 1994; Narayan et al., 2007; Alberini et al., 2011). Residential natural gas prices are obtained from Texas Gas Service.

It has long been recognized that climate exerts a heavy influence on residential electricity usage in many regions (Wilson, 1971). Data on heating degree days (HDD) and cooling degree days (CDD) are obtained from El Paso Electric Company. Calculations for HDD and CDD are performed by the National Oceanic and Atmospheric Administration. Average temperatures for the day are calculated by adding the maximum temperature to the minimum temperature, and dividing by two. If the average temperature for the day is above 65°F, the difference is the number of CDD for that day. If the average temperature for the day is below 65°F, the difference is the number of HDD for that day. Due to the limited degrees of freedom available for this analysis, a single composite indicator of inhospitable outdoor temperatures is created by summing heating and cooling degree days (Nasr et al., 2000).

Per capita income is included to account for income effects and cyclical economic conditions that influence residential energy consumption. The personal consumption expenditures (PCE) deflator is used to express the price and income data in constant 2009 dollars. Data on per capita income for El Paso County and the PCE deflator are obtained from the U.S. Bureau of Economic Analysis (BEA). Finally, information on single- and multi-family housing stocks will be used to analyze the evolution of the customer base across time. Data on those variables are obtained from IHS Economics and Moody's Analytics. The names, definitions, and units of measure of all variables in the sample are listed in Table 1.

**Table 1. Mnemonics and definitions**

<b>Variable</b>	<b>Definition</b>
<i>C</i>	Kilowatt Hours per Residential Customer
<i>PE</i>	Price per Kilowatt Hour of Electricity, Real U.S. Dollars, Base Period 2009
<i>PG</i>	Price per CCF of Natural Gas, Real U.S. Dollars, Base Period 2009
<i>Y</i>	Real per Capita Income, Thousand U.S. Dollars, Base Period 2009
<i>DD</i>	Sum of Heating and Cooling Degree Days
<i>CSTM</i>	Number of Residential Customers, Thousands
<i>SF</i>	Single-Family Housing Stock, Thousands
<i>MF</i>	Multi-Family Housing Stock, Thousands
<i>PCE</i>	Personal Consumption Expenditures Price Index, Base Period 2009

## Theoretical model

The demand function utilized incorporates both economic and climatic determinants of electricity consumption (Silk and Joutz, 1997). The basic form of the long-run demand equation is shown in Equation (1). The data are transformed using natural logarithms prior to estimation. The resulting coefficients, therefore, represent elasticities of residential electricity demand.

$$\ln C_t = a_0 + a_1 \ln PE_t + a_2 \ln PG_t + a_3 \ln Y_t + a_4 \ln DD_t + u_t \quad (1)$$

(-)            (+)            (+)            (+)

Equation (1) displays how per customer electricity consumption,  $C$ , evolves over time. The expected signs of the parameters are shown in the parentheses under the explanatory variables. Increases in the price per kilowatt hour,  $PE$ , are expected to reduce the demand for residential electricity. If electricity and natural gas are substitutes, increases in the price of gas,  $PG$ , should lead to an increase in electricity consumption (Alberini et al., 2011).

The positive coefficient for the per capita income variable,  $Y$ , implies that electricity is consumed as a normal good by El Paso households. Many, if not most, prior empirical studies indicate that increases in income lead to an increase in residential electricity usage (Espey and Espey, 2004). Two recent studies, however, report negative income elasticities for the demand of electricity and that raises the possibility that the sign for the income coefficient might be negative (Contreras et al., 2009; Fullerton et al., 2012). The coefficient for the composite degree days variable,  $DD$ , is hypothesized to be positive due to the desire for more comfortable and healthy household environments during hot and cold periods (Wilson, 1971; Taylor, 1975).

In order to determine whether the variables included in Equation (1) are cointegrated, an ARDL model is estimated and a bounds testing procedure is applied (Pesaran and Shin, 1998; Pesaran et al., 2001). This approach has been previously utilized

to analyze electricity demand in various countries (Halicioglu, 2007; Dergiades and Tsoulfidis, 2008; Adom et al., 2012) and has also been used to model natural gas demand at a regional level (Payne et al., 2011). One advantage of the bounds testing approach is that it does not require that all of the potentially cointegrated variables be  $I(1)$ , but rather allows for cases in which the variables are  $I(0)$ ,  $I(1)$ , or a mix of the two. Another advantage of this approach to cointegration testing is that its small sample properties are relatively favorable (Narayan, 2005). The latter is particularly important for many medium- and small-sized public utilities where data constraints often exist.

In the first step, an ARDL specification of Equation (1) is developed. The Akaike Information Criterion or Schwarz Bayesian Criterion can be used to select the optimal number of lags of each variable (Enders, 2010). A general ARDL specification is shown in Equation (2), where  $i$  is an index for lags,  $p$  is the optimal number of dependent variable lags,  $q_j$  is the optimal number of lags for each explanatory variable, and  $\omega_t$  is an error term.

$$\ln C_t = \alpha_0 + \sum_{i=1}^p \gamma_i \ln C_{t-i} + \sum_{i=0}^{q_1} \alpha_{1i} \ln PE_{t-i} + \sum_{i=0}^{q_2} \alpha_{2i} \ln PG_{t-i} + \sum_{i=0}^{q_3} \alpha_{3i} \ln Y_{t-i} + \sum_{i=0}^{q_4} \alpha_{4i} \ln DD_{t-i} + \omega_t \quad (2)$$

The long-run coefficients are calculated using the estimated  $\alpha_{ji}$  parameters as shown in Equation (3), where  $j$  is an index identifying the explanatory variables considered in this model. The long-run coefficients are then substituted into Equation (1), which can be rearranged to calculate the residuals,  $u_t$ , that will be included in the short-run error correction equation if a cointegrating relationship is found to exist.

$$a_j = \sum_{i=0}^{q_j} \alpha_{ji} / (1 - \sum_{i=1}^p \gamma_i) \quad (3)$$

In order to test whether the variables in Equation (1) are indeed cointegrated, a bounds test is then conducted (Pesaran et al., 2001). To this end, Equation (4) is estimated, where  $\Delta$  is the first-difference operator and  $v$  is a random error term.

$$\Delta \ln C_t = b_0 + \sum_{i=1}^{p-1} d_i \Delta \ln C_{t-i} + \sum_{i=0}^{q_1-1} b_{1i} \Delta \ln PE_{t-i} + \sum_{i=0}^{q_2-1} b_{2i} \Delta \ln PG_{t-i} + \sum_{i=0}^{q_3-1} b_{3i} \Delta \ln Y_{t-i} + \sum_{i=0}^{q_4-1} b_{4i} \Delta \ln DD_{t-i} + b_5 \ln C_{t-1} + b_6 \ln PE_{t-1} + b_7 \ln PG_{t-1} + b_8 \ln Y_{t-1} + b_9 \ln DD_{t-1} + v_t \quad (4)$$

The null hypothesis of no cointegration can be evaluated by calculating the  $F$ -statistic for  $H_0: b_5 = b_6 = b_7 = b_8 = b_9 = 0$ . Pesaran et al. (2001) present one set of critical values for the case where all variables are  $I(0)$  and another set of critical values is computed for the  $I(1)$  case. When the calculated  $F$ -statistic falls between the upper and lower critical values, results of the test are indeterminate. When the  $F$ -statistic is larger than the upper bound, the null hypothesis can be rejected. Narayan (2005) presents bounds test critical values for sample sizes ranging from 30 to 80 observations. The latter critical values are used in the empirical analysis below.

In the final step, the short-run error correction equation is estimated. Short-run departures from the long-run equilibrium can be precipitated by a variety of factors. When those shocks occur, consumption is hypothesized to respond in a manner that allows the equilibrium to eventually be re-attained. The specification for the short-run usage equation is shown in Equation (5).

$$\Delta \ln C_t = \beta_0 + \sum_{i=1}^{p-1} \delta_i \Delta \ln C_{t-i} + \sum_{i=0}^{q_1-1} \beta_{1i} \Delta \ln PE_{t-i} + \sum_{i=0}^{q_2-1} \beta_{2i} \Delta \ln PG_{t-i} + \sum_{i=0}^{q_3-1} \beta_{3i} \Delta \ln Y_{t-i} + \sum_{i=0}^{q_4-1} \beta_{4i} \Delta \ln DD_{t-i} + \phi u_{t-1} + \varepsilon_t \quad (5)$$

The residuals from Equation (1), calculated using the long-run coefficients from Equation (3), are lagged and included in the short-run Equation (5) as the error correction term,  $u_{t-1}$ . The coefficient for the error correction term is expected to be negative, and indicates the rate at which a short-

run departure from equilibrium will dissipate. The time required for complete adjustment to the long-run equilibrium increases as the value of the error correction coefficient approaches zero.

Growth in a utility customer base also affects peak load demand. Careful analysis of customer base growth is required to ensure sufficient generating capacity is available to service native load and reserve requirements. Accordingly, a model is developed for variations in the number of residential customers. The basic form of the long-run equation for the residential customer base is specified in Equation (6).

$$\ln CSTM_t = c_0 + c_1 \ln SF_t + c_2 \ln MF_t + c_3 \ln Y_t + w_t \quad (6)$$

(+)\qquad\qquad (+)\qquad\qquad (+)

In Equation (6), the single-family housing stock (SF) and the multi-family housing stock (MF) are hypothesized to be positively correlated with growth in the customer base. The number of residential customers is also expected to fluctuate in tandem with prevailing regional economic conditions. The latter are approximated by El Paso County real per capita income ( $Y$ ). To investigate short- and long-run customer base dynamics, an ARDL model will be estimated following the same steps outlined above in the case of per-customer electricity consumption. The lagged residuals from the long-run customer account model,  $w_{t-1}$ , will be included in the short-run equation if a cointegrating relationship is uncovered.

Finally, it is important to test whether the parameters of the estimated models are stable or change significantly over time. To evaluate parameter stability, the cumulative sum (CUSUM) and cumulative sum of squares (CUMUMSQ) tests are conducted (Brown et al., 1975). If the statistics remain within the 5-percent critical bounds, it is not possible to reject the null hypothesis that the parameters are stable across time.



## Empirical Results

The ARDL approach utilized is not appropriate for variables that are integrated of an order greater than one (Pesaran et al., 2001). Phillips-Perron unit root tests indicate that all the variables included in the two models are either  $I(0)$  or  $I(1)$ . Thus, the data are suitable for analysis within the ARDL framework. The Akaike Information Criterion is utilized for lag-length selection in developing the ARDL models for electricity consumption and customers. A maximum of three lags of each variable are considered for inclusion in the models due to degree of freedom constraints.

An ARDL(2,1,3,2,0) model is selected for per customer electricity consumption. Diagnostic statistics for the model are presented in Table 2, along with estimated long-run elasticities. A Ljung-Box  $Q$ -statistic for the null hypothesis that the residuals are not autocorrelated, calculated using a residual autocorrelation function for lags of up to four years, indicates that serial correlation is not problematic. The calculated F-statistic for  $H_0: b_5 = b_6 = b_7 = b_8 = b_9 = 0$  is 6.42. This is higher than the 5-percent critical value for the upper bound computed by Narayan (2005). This indicates that the variables included in the model are cointegrated. As additional diagnostic checks, the CUSUM and CUSUMSQ tests of parameter stability are carried out. Figures 1 and 2 show that the model's parameters are relatively stable over time and the calculated statistics do not surpass the 5-percent critical bounds.

**Table 2. ARDL analysis of electricity consumption per customer**

Long-run coefficients for ARDL(2,1,3,2,0) model

Variable	Definition	Standard error	t-statistic	p-value
$\ln(PE)$	-1.246151	0.322309	-3.866326	0.0008
$\ln(PG)$	0.282713	0.077683	3.639320	0.0014
$\ln(Y)$	-0.679245	0.290487	-2.338294	0.0289
$\ln(DD)$	0.829524	0.226709	3.658987	0.0014

Diagnostic statistics for the underlying ARDL model

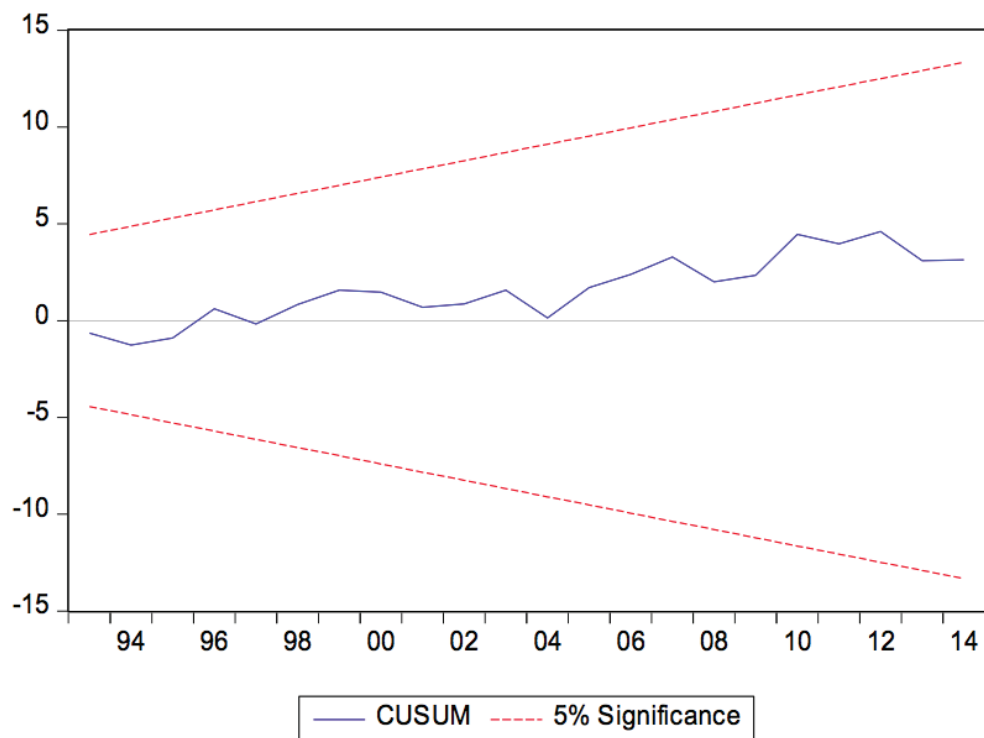
$R^2$	0.991245	Akaike Information Criterion	-5.950286
Adjusted $R^2$	0.986469	Schwarz Bayesian Criterion	-5.372585
$F$ -statistic	207.5591	Probability ( $F$ -statistic)	0.000000
Ljung-Box $Q$ -statistic	4.9209	Probability ( $Q$ -statistic)	0.296

Bounds test results

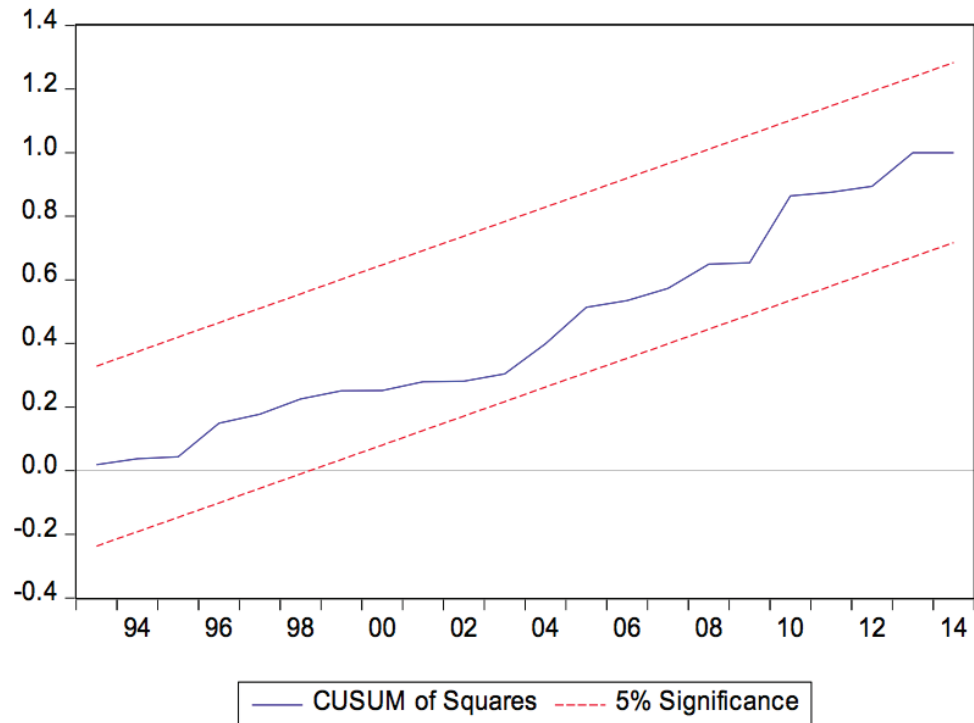
Bounds test 5-percent critical values

$F$ -statistic	6.419641	Lower bound $I(0)$	3.276
		Upper bound $I(1)$	4.630

Note: Bounds test critical values are from Narayan (2005).



**Figure 1.** CUSUM results for electricity consumption per customer



**Figure 2.** CUSUMSQ results for electricity consumption per customer

All of the long-run coefficient estimates in Table 2 are significant at the 5-percent level. Furthermore, with the exception of the parameter estimate for per capita income, all of the estimated coefficients exhibit the hypothesized signs. The own-price elasticity of -1.25 is larger in magnitude than the mean long-run price elasticity of -0.85 reported by Espey and Espey (2004) in a survey of prior research. It suggests that El Paso consumers are highly responsive to variations in the real price of electricity in the long-run. That is plausible. Other studies have also obtained long-run own-price elasticities that are greater than 1.0 in absolute value (Narayan et al., 2007; Dergiades and Tsoulfidis, 2008; Bernard et al., 2011).

The real price of natural gas, included in the model to capture substitute good effects, has an estimated coefficient that is positive and statistically significant at the 1-percent level. The long-run elasticity of demand with respect to the price of natural gas is 0.28, indicating that natural gas is an imperfect substitute good for electricity in El Paso. This parameter falls within the range of cross price elasticities, 0.04 to 0.32, reported in earlier studies (Roth, 1981; Hsing, 1994; Silk and Joutz, 1997). The inelastic response to gas price variations reported here may reflect the development of new consumer plug-in products over the past three decades. Since 1981, the share of residential electricity used by appliances and electronics has nearly doubled from 17 percent to 31 percent (Hojjati and Wade, 2012). Most of the newly developed consumer electronics products cannot use energy sources other than electricity, thus reducing the overall substitutability of natural gas in residences and businesses.

The negative parameter estimate for per capita income indicates that residential electricity in El Paso County is treated as an inferior good. That result runs contrary to the majority of earlier studies of residential electricity demand (Wilder et al., 1990). However, it may have a plausible explanation. As incomes rise, consumers may

upgrade household appliance stocks, leading to reductions in electricity consumption because newer appliances and housing structures tend to be more energy efficient (Schipper and Ketoff, 1985; Alberini et al., 2011). The parameter estimate indicates that a 1% increase in real per capita income is associated with a 0.68% decrease in residential electricity usage in the long run. This result corroborates a subset of other studies in which negative income elasticities have also been reported (Roth, 1981; Contreras et al., 2009).

As hypothesized, the explanatory variable for aggregate cooling and heating degree days (DD) is positively correlated with residential electricity usage. This suggests that household cooling is an important end-use of electric energy in El Paso. It also suggests that customers probably spend more time indoors during inclement weather. Nasr et al. (2000) document higher electricity consumption during periods of hot or cold weather. In El Paso, a 1% increase in annual heating and cooling degree days increases residential electricity consumption by approximately 0.83%.

Estimation results for the short-run error correction equation are summarized in Table 3. The short-run own-price elasticity of -0.24 is substantially smaller in terms of absolute value than the long-run elasticity shown in Table 2. Other studies have also found that short-run price elasticities are smaller in magnitude than corresponding long-run elasticities (Narayan et al., 2007; Dergiades and Tsoulfidis, 2008; Bernard et al., 2011; Fullerton et al., 2012). This makes intuitive sense. In the short-run, consumers tend to respond to price increases by reducing usage of existing electrical devices. In the long-run, greater reductions in consumption can be achieved by the acquisition of new energy-saving appliances.

The contemporaneous short-run cross-price elasticity for natural gas is positive, as hypothesized, but the coefficient does not satisfy the 5-percent significance criterion. Contrary to expectations,

the coefficients on one- and two-year lags of the gas price variable are negative and statistically significant. Garcia-Cerruti (2000) obtains similar results indicating that consumers sometimes treat natural gas and electricity as complements. It is plausible that higher prices for fuels such as natural gas may encourage adoption of devices that are more energy-efficient overall, thus reducing residential electricity consumption after a lag of one or two years. Another possibility is that lagged natural gas prices proxy for electricity prices since natural gas is a major input to electricity generation in El Paso and the price of fuel inputs is an important determinant of retail electricity prices (Girish and Vijayalakshmi, 2013; EPEC, 2016).

The impact of real per-capita income is positive both contemporaneously and after a one-year lag, although the latter effect does not satisfy the standard significance criterion. Thus, the hypothesis regarding the direct effect of income on residential electricity sales is upheld in the short-run. The results for El Paso are similar to those reported in Fullerton et al. (2012) for Seattle with a short-run income elasticity that is positive, but a long-run elasticity coefficient that is negative. The outcomes suggest that household electricity usage is directly correlated with the business cycle in the short-run. Electric-energy-saving effects of higher incomes appear to be manifested over the long run as older, less efficient electrical devices are gradually upgraded. Finally, extreme temperatures, as represented by total cooling and heating degree days, have strong immediate impacts on residential electricity demand.



**Table 3. Electricity consumption per customer error correction results**

Dependent variable: $\Delta \ln(C_t)$				
Variable	Definition	Standard error	<i>t</i> -statistic	<i>p</i> -value
Constant	0.455507	0.048343	9.422316	0.0000
$\Delta \ln(C_{t-1})$	-0.384332	0.089158	-4.310679	0.0002
$\Delta \ln(PE_t)$	-0.243728	0.040067	-6.082983	0.0000
$\Delta \ln(PG_t)$	0.000413	0.005143	0.080374	0.9366
$\Delta \ln(PG_{t-1})$	-0.078786	0.013549	-5.815011	0.0000
$\Delta \ln(PG_{t-2})$	-0.038415	0.012579	-3.053983	0.0053
$\Delta \ln(Y_t)$	0.472135	0.132157	3.572537	0.0015
$\Delta \ln(Y_{t-1})$	0.187731	0.112534	1.668224	0.1078
$\Delta \ln(DD_t)$	0.222865	0.028668	7.774099	0.0000
$u_{t-1}$	-0.290013	0.031283	-9.270521	0.0000
Diagnostic statistics				
$R^2$	0.880100	Akaike Information Criterion	-6.131247	
Adjusted $R^2$	0.836937	Schwarz Bayesian Criterion	-5.686862	
<i>F</i> -statistic	20.38976	Probability ( <i>F</i> -statistic)	0.000000	
Ljung-Box <i>Q</i> -statistic	5.1761	Probability ( <i>Q</i> -statistic)	0.270	

As hypothesized, the sign for the error correction parameter ( $u_{t-1}$ ) is less than zero. The value of the error correction coefficient is -0.29, indicating that approximately 29% of the consumption deviation from the long-run equilibrium dissipates within one year. A total of approximately 3.4 years are required for a long-run equilibrium to be fully regained, a somewhat longer amount of time for this border metropolitan economy than the sub-three year periods reported in some residential studies using national KWH data (Silk and Joutz, 1997; Dergiades and Tsoulfidis, 2008).

For investor owned utilities like El Paso Electric, anticipating growth in the customer base is important in order to successfully maintain sufficient generation, transmission, and distribution capacity. Capital expansion projects for those facilities must be planned in advance (Shockley and Heitz, 2012). Rights of way for transmission poles and substations entail lengthy regulatory and environmental permitting requirements. Understanding residential customer growth is part of the planning process and requires models that incorporate both demographic and economic factors. The long-run customer base specification shown in Equation (6) above incorporates both factors. Estimation results are shown in Table 4.

An ARDL(3,0,3,3) model is selected on the basis of the Akaike Information Criterion. The  $Q$ -statistic indicates that the null hypothesis of no residual autocorrelation cannot be rejected. The  $F$ -statistic calculated for the bounds test is 5.75, which exceeds the 5-percent critical value for the upper bound, indicating that a cointegrating relationship has been found for the residential customer base. Finally, CUSUM and CUSUMSQ results are shown in Figures 3 and 4. The computed statistics remain within the 5-percent critical bounds, indicating the absence of significant deviations from the null hypothesis of parameter stability.

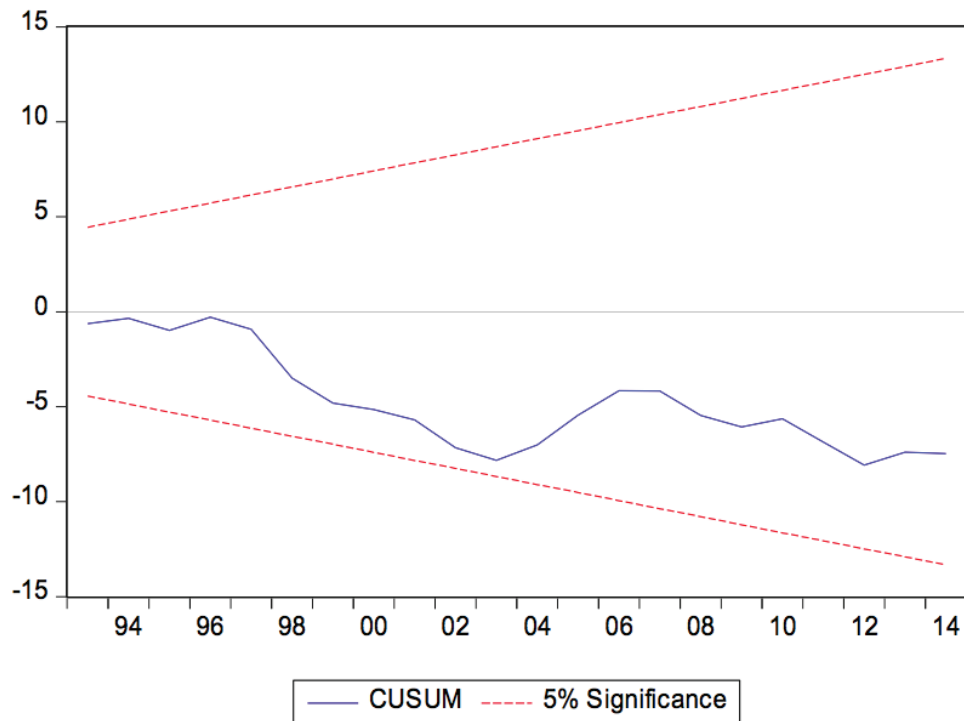
**Table 4. ARDL analysis of the customer base**

Long-run coefficients for ARDL(3,0,3,3) model				
Variable	Definition	Standard error	<i>t</i> -statistic	<i>p</i> -value
ln( <i>SF</i> )	0.795753	0.111853	7.114299	0.0000
ln( <i>MF</i> )	0.333283	0.037272	8.941948	0.0000
ln( <i>Y</i> )	0.022909	0.103810	0.220682	0.8274
Diagnostic statistics for the underlying ARDL model				
R <sup>2</sup>	0.999719	Akaike Information Criterion	-7.636155	
Adjusted R <sup>2</sup>	0.999566	Schwarz Bayesian Criterion	-7.058455	
<i>F</i> -statistic	6531.675	Probability (F-statistic)	0.000000	
Ljung-Box <i>Q</i> -statistic	5.9492	Probability (Q-statistic)	0.203	
Bounds test results		Bounds test 5-percent critical values		
<i>F</i> -statistic	5.746322	Lower bound I(0)	3.276	
		Upper bound I(1)	4.630	

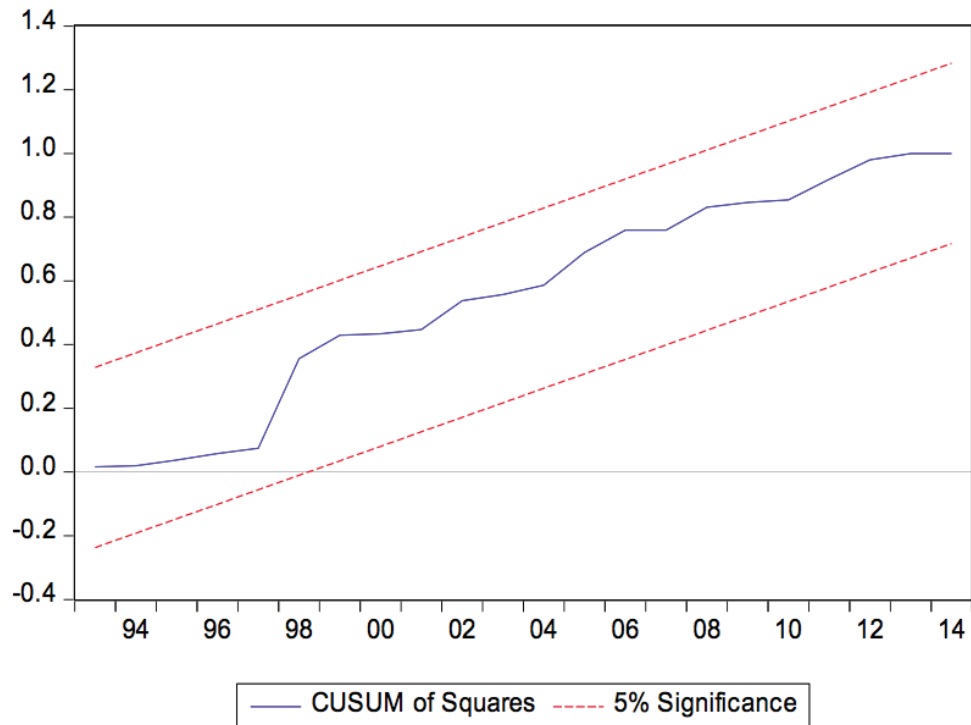
Note: Bounds test critical values are from Narayan (2005).

As expected, all three independent variables are directly correlated with customer growth. The long-run coefficients indicate that a 1% increase in the single-family housing stock leads to a 0.80% increase in the residential customer base, while a 1% increase in the stock of multi-family housing leads to a 0.33% increase in the number of residential accounts. After accounting for the impact of the housing stock on the number of customer accounts, per-capita income has a positive, but statistically insignificant effect. The housing stock appears to be the main driver of residential account growth in El Paso over the long run, but the increases in the customer base due to income gains are not very unreliable.

Results for the short-run error correction equation for residential customer growth are shown in Table 5. The estimated coefficient for the single-family housing stock is positive and statistically significant. The multi-family housing stock has a positive and significant impact on customer accounts within one year, although minor reversals occur on a statistically insignificant basis over the course of the subsequent two years. The parameter magnitudes in these results suggest that shifts in the housing stock translate fairly quickly into changes in the number of residential electrical accounts.



**Figure 3.** CUSUM results for the customer base



**Figure 4.** CUSUMSQ results for the customer base



Changes in per-capita income do not translate into greater, or fewer, customer accounts very quickly. That is probably due to leasing contracts, security deposit requirements, housing down payment accumulation, mortgage application procedures, school enrollments, and other institutional factors that affect the rate of household formation. Following a two-year lag, however, per-capita income is found to generate changes in the number of residential electricity customers, but not with enough regularity to satisfy the standard significance criterion. The parameter estimate for per capita income indicates that the local business cycle has a small positive effect on the number of electricity accounts, even after accounting for variations in the housing stock. This effect suggests that economic slowdowns delay the occupancy of new housing units and increase the amount of time that existing homes remain vacant.

**Table 5. Customer base error correction results**

Dependent variable: $\Delta \ln(CSTM_t)$				
Variable	Definition	Standard error	<i>t</i> -statistic	<i>p</i> -value
Constant	-0.091807	0.021254	-4.319453	0.0002
$\Delta \ln(CSTM_{t-1})$	-0.166464	0.090158	-1.846353	0.0772
$\Delta \ln(CSTM_{t-2})$	-0.152010	0.099168	-1.532852	0.1384
$\Delta \ln(SF_t)$	0.634005	0.160178	3.958124	0.0006
$\Delta \ln(MF_t)$	0.688987	0.073089	9.426688	0.0000
$\Delta \ln(MF_{t-1})$	-0.134236	0.124020	-1.082375	0.2898
$\Delta \ln(MF_{t-2})$	-0.126612	0.090049	-1.406040	0.1725
$\Delta \ln(Y_t)$	-0.020183	0.049186	-0.410334	0.6852
$\Delta \ln(Y_{t-1})$	-0.052437	0.044308	-1.183464	0.2482
$\Delta \ln(Y_{t-2})$	0.081694	0.041317	1.977266	0.0596
$w_{t-1}$	-0.770023	0.154062	-4.998147	0.0000
Diagnostic statistics				
$R^2$	0.869968	Akaike Information Criterion	-7.750916	
Adjusted $R^2$	0.815789	Schwarz Bayesian Criterion	-7.262093	
<i>F</i> -statistic	16.05706	Probability ( <i>F</i> -statistic)	0.000000	
Ljung-Box <i>Q</i> -statistic	6.1861	Probability ( <i>Q</i> -statistic)	0.186	

The error correction term is negative and less than one, as hypothesized. The magnitude of the error correction term indicates that approximately 77% of the adjustment toward long-run equilibrium occurs in the first year following a deviation from it. Only 1.3 years is required to fully dissipate a deviation from the long-run equilibrium. That is substantially faster than what Fullerton et al. (2012) document for Seattle and points to potentially interesting customer base dynamics across metropolitan economies and service areas. This topic has not received very much attention in the public utility literature and may be worthwhile to investigate further.

Management decisions regarding increases to generation, transmission, and distribution capacity require demand forecasts for all rate categories, including residential. As an additional step towards examining the empirical results reported in this study, a 3-period out-of-sample simulation is conducted for residential KWH consumption and customer growth. Compound annual growth rates (CAGR) are calculated from observed historical data for El Paso Electric for the 2004 to 2014 period. The CAGRs and the 3-year forecasted values for the explanatory variables are shown in Table 6. The electricity price variable, PE, declined at an average rate of 1.38% per year and the real price of natural gas fell by 2.35% per year from 2004 to 2014. Real per capita income in El Paso has a CAGR of 1.54% during the decade selected, while the growth rates for the single- and multi-family housing stocks are 1.70% and 1.19%, respectively. The weather variable forecast is calculated by using a 10-year historical mean value of 4,850 for DD.

Table 7 reports the forecasts for the dependent variables on the basis of the growth rates calculated for the regressors. The simulation indicates that per customer residential sales will grow from 7,392 KWH in Year 1 to 7,528 KWH in Year 3. Much of that increase is due to the 1.38% annual real price declines employed in the simulation. By the third year of the simulation, the declining price of

electricity is the main driver of projected increases in electricity consumption. The results in Table 7 imply that total residential gigawatt hour (GWH) sales will increase at a compound annual growth rate of 2.89% under the conditions outlined in Table 6. The observed historical 10-year compound annual growth rate for El Paso residential sales is approximately 3.07%. The simulation properties of the estimated model seem plausible.

Public policy makers often work together with electric utility companies in order to promote energy conservation and energy efficiency. El Paso Electric offers incentives to homeowners to improve in energy efficiency by investing in items such as multi-pane windows and better insulation. As shown in Table 2, the long-run elasticity of per customer residential electricity consumption with respect to price is -1.25. That implies that any serious efforts to induce greater energy conservation in El Paso will have to entail rate hikes. The latter is not surprising. The central role of price changes with respect to residential electricity usage is well documented (Anderson, 1973; Narayan et al., 2007; Reiss and White, 2008).

On that basis, prospects for electricity conservation in El Paso are not very promising. The average El Paso Electric residential real price for electricity has failed to keep pace with inflation for three consecutive decades. By 2014, the last year in the sample period, the residential real price per kilowatt hour was 46.9 percent below its level in 1983. Although numerous factors have influenced the evolution of electricity rates in El Paso, if the long-run trend towards lower real prices for electricity continues, per customer residential electricity usage is likely to continue to increase in the Texas portion of the service area.

Under normal circumstances, regulating residential energy usage through pricing policies could provide an effective tool for policymakers. However, the potential for encouraging more efficient energy use via price increases is not as straightforward

**Table 6. Explanatory variable growth for simulation**

	<i>PE</i>	<i>PG</i>	<i>Y</i>	<i>DD</i>	<i>SF</i>	<i>MF</i>
<b>10-YR CAGR</b>	<b>-1.38</b>	<b>-2.35</b>	<b>1.54</b>	<b>0.00</b>	<b>1.70</b>	<b>1.19</b>
Year 1	0.1054	0.4819	29.609	4,850	202.778	73.935
Year 2	0.1039	0.4705	30.064	4,850	206.227	74.818
Year 3	0.1025	0.4595	30.526	4,850	209.735	75.711

**Table 7. Residential consumption and customer forecasts**

<b>YEAR</b>	<b><i>C</i></b>	<b>% <math>\Delta</math></b>	<b><i>GWH</i></b>	<b>% <math>\Delta</math></b>	<b><i>CSTM</i></b>	<b>% <math>\Delta</math></b>
Year 1	7,392	0.35	2,013	1.65	272.375	1.29
Year 2	7,452	0.81	2,074	3.01	278.337	2.19
Year 3	7,528	1.02	2,132	2.77	283.162	1.73

as it appears. In 2011, the El Paso City Council requested rate relief from El Paso Electric, arguing that rates were too high relative to other regions (Schladen, 2011). Somewhat surprisingly, this request occurred in the midst of a 5-year, \$1 billion series of capital expansion projects by El Paso Electric (Shockley and Heitz, 2012). Proponents of lower rates claim that the local economy will be more competitive as a consequence of the price reductions, but public controversy over rates neutralizes an effective tool for increased usage efficiency. In the absence of sustained rate increases that outpace inflation, aggregate residential electricity consumption in El Paso is likely to remain higher than it would be otherwise, even if real per capita incomes continue to increase in this urban economy.

One question that logically arises is whether the results obtained, particularly for the long-run income coefficient, are merely an accident of geography. Evidence reported for electricity usage in the immediately adjacent metropolitan economy of Ciudad Juárez, Mexico, indicates that is not the case (Fullerton et al., 2014). Electricity is found to behave as a normal good in that urban economy located just across a river bed that generally contains little, if any, water. Whether that is also the case for the Las Cruces, New Mexico metropolitan economy portion of the El Paso Electric service area remains to be seen.

## Conclusion

The long-run income elasticity reported in this study is  $-0.68$  and indicates that household electricity is treated as an inferior good in El Paso County. The negative income elasticity result is at odds with much of the existing literature on this topic, but it confirms similar results reported in two recent studies that employ very different data samples. This should encourage additional research at the regional level. Electricity, of course, is not a classical example of an “inferior” good, but residential electricity consumption in El Paso

and other regions within the United States seems to behave as such over the long run. One possible explanation for a decline in usage as incomes rise is the adoption of energy efficiency upgrades to appliances and housing structures in recent years. Reductions in residential electricity demand per customer as increases in per capita income occur should place less pressure on existing generation capacity, even as the regional economy continues to expand. Transmission and distribution grid growth will not, however, be lower as a consequence of this type of usage evolution.

Out of sample simulations indicate that El Paso residential electricity consumption will grow at a compound annual rate of 2.89 percent over the course of the three year forecast period if the explanatory variables continue to change at rates observed over the last decade. These results compare well to the historical growth rate for aggregate residential demand in the El Paso Electric service territory. Simulation results also indicate that per capita electricity consumption is expected to increase, driven largely by declines in the real price of electricity that offset the reductions in usage that occur as real incomes increase.

## References

- Adom, P.K., W. Bekoe, and S.K.K. Akoena. 2012. Modelling aggregate domestic electricity demand in Ghana: An autoregressive distributed lag bounds cointegration approach. *Energy Policy* 42: 530-537.
- Alberini, A., W. Gans, and D. Velez-Lopez. 2011. Residential consumption of gas and electricity in the U.S.: The role of prices and income. *Energy Economics* 33(5): 870-881.
- Anderson, K.P. 1973. Residential demand for electricity: Econometric estimates for California and the United States. *Journal of Business* 46(4): 526-553.
- Archibald, R.B., D.H. Finifter, and C.E. Moody Jr. 1982. Seasonal variation in residential electricity demand: Evidence from survey data. *Applied Economics* 14(2): 167-181.
- Ayllon, S. 2013. Understanding poverty persistence in Spain. *Series – Journal of the Spanish Economic Association* 4(2): 201-233.
- Barten, A.P. 1968. *Estimating demand equations*. *Econometrica* 36(2): 213-251.
- Bernard, J., D. Bolduc, and N. Yameogo. 2011. A pseudo-panel data model of household electricity demand. *Resource and Energy Economics* 33(1): 315-325.
- Branch, E.R. 1993. Short run income elasticity of demand for residential electricity using consumer expenditure survey data. *Energy Journal* 14(1): 111-121.
- Brown, R.L., J. Durbin, and J.M. Evans. 1975. Techniques for testing the constancy of regression relationships over time. *Journal of the Royal Statistical Society. Series B (Methodological)*, 37(2): 149-192.
- Cebula, R.J. 2012. U.S. residential electricity consumption: The effect of states' pursuit of energy efficiency policies. *Applied Economics Letters* 19(15): 1499-1503.
- Cicchetti, C.J., and V.K. Smith. 1975. Alternative price measures and the residential demand for electricity. *Regional Science and Urban Economics* 5(4): 503-516.
- Contreras, S., W.D. Smith, T.P. Roth, and T.M. Fullerton Jr. 2009. Regional evidence regarding U.S. residential electricity consumption. *Empirical Economics Letters* 8(9): 827-832.
- Dergiades, T., and L. Tsoulfidis. 2008. Estimating residential demand for electricity in the United States. *Energy Economics* 30(5): 2722-2730.
- Dortolina, C.A., and R. Nadira. 2005. Estimating future demand a top down/bottom up approach for forecasting annual growths. *Power Engineering Society General Meeting, IEEE Conference* 1: 400-405.
- Enders, W. 2010. *Applied Econometric Time Series*. Danvers, MA: John Wiley & Sons, Inc.
- EPEC. 2016. *Investor Relations Fact Sheet*. El Paso, TX: El Paso Electric Company.
- Espey, J.A., and M. Espey. 2004. Turning on the lights: A meta-analysis of residential electricity demand elasticities. *Journal of Agricultural & Applied Economics* 36(1): 65-81.
- Faruqui, A., S. Sergici, and A. Sharif. 2010. The impact of informational feedback on energy consumption - A survey of the experimental evidence. *Energy* 35(4): 1598-1608.
- Fullerton, T.M. Jr., D.A. Juarez, and A.G. Walke. 2012. Residential electricity consumption in Seattle. *Energy Economics* 34(5): 1693-1699.



- Fullerton, T.M. Jr., E.C. Méndez-Carrillo, and A.G. Walke. 2014. Electricity demand in a northern Mexico metropolitan economy. *International Journal of Energy Economics & Policy* 4(4): 495-505.
- Garcia-Cerruti, L.M. 2000. Estimating elasticities of residential energy demand from panel county data using dynamic random variables models with heteroskedastic and correlated error terms. *Resource and Energy Economics* 22(4): 355-366.
- Girish, G.P., and S. Vijayalakshmi. 2013. Determinants of electricity price in competitive power market. *International Journal of Business and Management* 8(21): 70-75.
- Halicioglu, F. 2007. Residential electricity demand dynamics in Turkey. *Energy Economics* 29(2): 199-210.
- Halvorsen, B. 1975. Residential demand for electric energy. *Review of Economics and Statistics* 57(1): 12-18.
- Hojjati, B., and S.H. Wade. 2012. U.S. household energy consumption and intensity trends. *Energy Policy* 48: 304-314.
- Houthakker, H.S. 1951. Some calculations on electricity consumption in Great Britain. *Journal of the Royal Statistical Society* 114(3): 359-371.
- Houthakker, H.S. 1980. Residential electricity revisited. *Energy Journal* 1(1): 29-41.
- Hsing, Y. 1994. Estimation of residential demand for electricity with the cross-sectionally correlated and time-wise autoregressive model. *Resource and Energy Economics* 16(3): 255-263.
- Ito, K. 2014. Do consumers respond to marginal or average price? Evidence from nonlinear electricity pricing,” *American Economic Review* 104(2): 537-563.
- Narayan, P.K. 2005. The saving and investment nexus for China: Evidence from cointegration tests. *Applied Economics* 37(17): 1979-1990.
- Narayan, P.K., R. Smyth, and A. Prasad. 2007. Electricity consumption in G7 countries: A panel cointegration analysis of residential demand elasticities. *Energy Policy* 35(9): 4485-4494.
- Nasr, G.E., E.A. Badr, and G. Dibeh. 2000. Econometric modeling of electricity consumption in post-war Lebanon. *Energy Economics* 22(6): 627-640.
- Patton, W.P. 2012. *Application of El Paso Electric Company to Amend its Certificate of Convenience and Necessity for Two Generating Units, Docket No. 40301*. Austin, TX: Public Utility Commission of Texas.
- Payne, J.E., D. Loomis, and R. Wilson. 2011. Residential natural gas demand in Illinois: Evidence from the ARDL bounds testing approach. *Journal of Regional Analysis & Policy* 41(2): 138-147.
- Pesaran, M.H., and Y. Shin. 1998. An autoregressive distributed-lag modelling approach to cointegration analysis. In S. Strom (ed.) *Econometrics and Economic Theory in the 20th Century: The Ragnar Frisch Centennial Symposium*. Cambridge, UK: Cambridge University Press.
- Pesaran, M.H., Y. Shin, and R.J. Smith. 2001. Bounds testing approaches to the analysis of level relationships. *Journal of Applied Econometrics* 16(3): 289-326.
- Provenzano, G., and R.A. Walasek. 1981. Regional variation in electric energy: Demand responsiveness in the residential sector in Illinois. *Journal of Regional Analysis & Policy* 11(2): 56-69.
- Reiss, P.C., and M.W. White. 2008. What changes energy consumption? Prices and public pressures.

*RAND Journal of Economics* 39(3): 636-663.

Roth, T.P. 1981. Average and marginal price changes and the demand for electricity: An econometric study. *Applied Economics* 13(3): 377-388.

Schipper, L., and A.N. Ketoff. 1985. Residential energy use in the OECD. *Energy Journal* 6(4): 65-85.

Schladen, M. 2011. Rate-cut fight still on: City council gives El Paso Electric Feb. 1 deadline. *El Paso Times*. 15 November, pp. A1-A3.

Shin, J. 1985. Perception of price when price information is costly: Evidence from residential electricity demand. *Review of Economics and Statistics* 67(4): 591-598.

Shockley, T.V., and K.R. Heitz. 2012. Letter to Shareholders, El Paso Electric 2011 Annual Report. El Paso, TX: El Paso Electric Company.

Silk, J.I., and F.L. Joutz. 1997. Short and long-run elasticities in US residential electricity demand: A co-integration approach. *Energy Economics* 19(4): 493-515.

Taylor, L.D. 1975. The demand for electricity: A survey. *Bell Journal of Economics* 6(1): 74-110.

Wilder, R.P., J.E. Johnson, and R.G. Rhyne. 1990. Income elasticity of the residential demand for electricity. *Journal of Energy and Development* 16(1): 1-13.

Wilson, J.W. 1971. Residential demand for electricity. *Quarterly Review of Economics and Business* 11(1): 7-22.

Wooldridge, J.M. 2009. *Introductory Econometrics*. Fourth Edition. Mason, OH: South-Western Cengage Learning.

# *The University of Texas at El Paso*

*Announces*

## **Borderplex Economic Outlook to 2017**

UTEP is pleased to announce the 2015 edition of its primary source of border business information. Topics covered include demography, employment, personal income, retail sales, residential real estate, transportation, international commerce, and municipal water consumption. Forecasts are generated utilizing the 255-equation UTEP Border Region Econometric Model developed under the auspices of a corporate research gift from El Paso Electric Company.

The authors of this publication are UTEP Professor & Trade in the Americas Chair Tom Fullerton and UTEP Associate Economist Adam Walke. Dr. Fullerton holds degrees from UTEP, Iowa State University, Wharton School of Finance at the University of Pennsylvania, and University of Florida. Prior experience includes positions as Economist in the Executive Office of the Governor of Idaho, International Economist in the Latin America Service of Wharton Econometrics, and Senior Economist at the Bureau of Economic and Business Research at the University of Florida. Adam Walke holds an M.S. in Economics from UTEP and has published research on energy economics, mass transit demand, and cross-border regional growth patterns.

The border business outlook through 2017 can be purchased for \$10 per copy. Please indicate to what address the report(s) should be mailed (also include telephone, fax, and email address):

---

---

---

---

---

---

Send checks made out to University of Texas at El Paso for \$10 to:

Border Region Modeling Project - CBA 236  
UTEP Department of Economics & Finance  
500 West University Avenue  
El Paso, TX 79968-0543

Request information from 915-747-7775 or  
agwalke@utep.edu if payment in pesos is preferred.



# *The University of Texas at El Paso*

*Announces*

## **Borderplex Long-Term Economic Trends to 2029**

UTEP is pleased to announce the availability of an electronic version of the 2010 edition of its primary source of long-term border business outlook information. Topics covered include detailed economic projections for El Paso, Las Cruces, Ciudad Juárez, and Chihuahua City. Forecasts are generated utilizing the 225-equation UTEP Border Region Econometric Model developed under the auspices of a 12-year corporate research support program from El Paso Electric Company.

The authors of this publication are UTEP Professor & Trade in the Americas Chair Tom Fullerton and former UTEP Associate Economist Angel Molina. Dr. Fullerton holds degrees from UTEP, Iowa State University, Wharton School of Finance at the University of Pennsylvania, and University of Florida. Prior experience includes positions as Economist in the Executive Office of the Governor of Idaho, International Economist in the Latin America Service of Wharton Econometrics, and Senior Economist at the Bureau of Economic and Business Research at the University of Florida. Angel Molina holds an M.S. Economics degree from UTEP and has conducted econometric research on international bridge traffic, peso exchange rate fluctuations, and cross-border economic growth patterns.

The long-term border business outlook through 2029 can be purchased for \$10 per copy. Please indicate to what address the report(s) should be mailed (also include telephone, fax, and email address):

---

---

---

---

---

---

---

Send checks made out to University of Texas at El Paso for \$10 to:

Border Region Modeling Project - CBA 236  
UTEP Department of Economics & Finance  
500 West University Avenue  
El Paso, TX 79968-0543

Request information at 915-747-7775 or  
agwalke@miners.utep.edu if payment in pesos is preferred.



# *The UTEP Border Region Modeling Project & UACJ Press*

*Announce the Availability of*

## **Basic Border Econometrics**

The University of Texas at El Paso Border Region Modeling Project is pleased to announce **Basic Border Econometrics**, a publication from Universidad Autónoma de Ciudad Juárez. Editors of this new collection are Martha Patricia Barraza de Anda of the Department of Economics at Universidad Autónoma de Ciudad Juárez and Tom Fullerton of the Department of Economics & Finance at the University of Texas at El Paso.

Professor Barraza is an award winning economist who has taught at several universities in Mexico and has published in academic research journals in Mexico, Europe, and the United States. Dr. Barraza currently serves as Research Provost at UACJ. Professor Fullerton has authored econometric studies published in academic research journals of North America, Europe, South America, Asia, Africa, and Australia. Dr. Fullerton has delivered economics lectures in Canada, Colombia, Ecuador, Finland, Germany, Japan, Korea, Mexico, the United Kingdom, the United States, and Venezuela.

Border economics is a field in which many contradictory claims are often voiced, but careful empirical documentation is rarely attempted. **Basic Border Econometrics** is a unique collection of ten separate studies that empirically assess carefully assembled data and econometric evidence for a variety of different topics. Among the latter are peso fluctuations and cross-border retail impacts, border crime and boundary enforcement, educational attainment and border income performance, pre- and post-NAFTA retail patterns, self-employed Mexican-American earnings, maquiladora employment patterns, merchandise trade flows, and Texas border business cycles.

Contributors to the book include economic researchers from the University of Texas at El Paso, New Mexico State University, University of Texas Pan American, Texas A&M International University, El Colegio de la Frontera Norte, and the Federal Reserve Bank of Dallas. Their research interests cover a wide range of fields and provide multi-faceted angles from which to examine border economic trends and issues.

A limited number of Basic Border Econometrics can be purchased for \$10 per copy. Please contact Professor Servando Pineda of Universidad Autónoma de Ciudad Juárez at [spineda@uacj.mx](mailto:spineda@uacj.mx) to order copies of the book. Additional information for placing orders is also available from Professor Martha Patricia Barraza de Anda at [mbarraza@uacj.mx](mailto:mbarraza@uacj.mx).

## **The University of Texas at El Paso Technical Report Series:**

TX97-1: *Currency Movements and International Border Crossings*  
TX97-2: *New Directions in Latin American Macroeconometrics*  
TX97-3: *Multimodal Approaches to Land Use Planning*  
TX97-4: *Empirical Models for Secondary Market Debt Prices*  
TX97-5: *Latin American Progress under Structural Reform*  
TX97-6: *Functional Form for United States-Mexico Trade Equations*  
TX98-1: *Border Region Commercial Electricity Demand*  
TX98-2: *Currency Devaluation and Cross-Border Competition*  
TX98-3: *Logistics Strategy and Performance in a Cross-Border Environment*  
TX99-1: *Inflationary Pressure Determinants in Mexico*  
TX99-2: *Latin American Trade Elasticities*  
CSWHT00-1: *Tariff Elimination Staging Categories and NAFTA*  
TX00-1: *Borderplex Business Forecasting Analysis*  
TX01-1: *Menu Prices and the Peso*  
TX01-2: *Education and Border Income Performance*  
TX02-1: *Regional Econometric Assessment of Borderplex Water Consumption*  
TX02-2: *Empirical Evidence on the El Paso Property Tax Abatement Program*  
TX03-1: *Security Measures, Public Policy, Immigration, and Trade with Mexico*  
TX03-2: *Recent Trends in Border Economic Analysis*  
TX04-1: *El Paso Customs District Cross-Border Trade Flows*  
TX04-2: *Borderplex Bridge and Air Econometric Forecast Accuracy: 1998-2003*  
TX05-1: *Short-Term Water Consumption Patterns in El Paso*  
TX05-2: *Menu Price and Peso Interactions: 1997-2002*  
TX06-1: *Water Transfer Policies in El Paso*  
TX06-2: *Short-Term Water Consumption Patterns in Ciudad Juárez*  
TX07-1: *El Paso Retail Forecast Accuracy*  
TX07-2: *Borderplex Population and Migration Modeling*  
TX08-1: *Borderplex 9/11 Economic Impacts*  
TX08-2: *El Paso Real Estate Forecast Accuracy: 1998-2003*  
TX09-1: *Tolls, Exchange Rates, and Borderplex Bridge Traffic*  
TX09-2: *Menu Price and Peso Interactions: 1997-2008*  
TX10-1: *Are Brand Name Medicine Prices Really Lower in Ciudad Juárez?*  
TX10-2: *Border Metropolitan Water Forecast Accuracy*  
TX11-1: *Cross Border Business Cycle Impacts on El Paso Housing: 1970-2003*  
TX11-2: *Retail Peso Exchange Rate Discounts and Premia in El Paso*  
TX12-1: *Borderplex Panel Evidence on Restaurant Price and Exchange Rate Dynamics*  
TX12-2: *Dinámica del Consumo de Gasolina en Ciudad Juárez: 2001-2009*  
TX13-1: *Physical Infrastructure and Economic Growth in El Paso: 1976-2009*  
TX13-2: *Tolls, Exchange Rates, and Northbound International Bridge Traffic: 1990-2006*  
TX14-1: *Freight Transportation Costs and the Thickening of the U.S.-Mexico Border*  
TX14-2: *Are Online Pharmacy Prices Really Lower in Mexico?*  
TX15-1: *Drug Violence, the Peso, and Northern Border Retail Activity in Mexico*  
TX15-2: *Downtown Parking Meter Demand in El Paso*  
TX16-1: *North Borderplex Retail Gasoline Price Fluctuations: 2000-2013*  
TX16-2: *Residential Electricity Demand in El Paso: 1977-2014*



## The University of Texas at El Paso Border Business Forecast Series:

SR98-1: *El Paso Economic Outlook: 1998-2000*  
SR99-1: *Borderplex Economic Outlook: 1999-2001*  
SR00-1: *Borderplex Economic Outlook: 2000-2002*  
SR01-1: *Borderplex Long-Term Economic Trends to 2020*  
SR01-2: *Borderplex Economic Outlook: 2001-2003*  
SR02-1: *Borderplex Long-Term Economic Trends to 2021*  
SR02-2: *Borderplex Economic Outlook: 2002-2004*  
SR03-1: *Borderplex Long-Term Economic Trends to 2022*  
SR03-2: *Borderplex Economic Outlook: 2003-2005*  
SR04-1: *Borderplex Long-Term Economic Trends to 2023*  
SR04-2: *Borderplex Economic Outlook: 2004-2006*  
SR05-1: *Borderplex Long-Term Economic Trends to 2024*  
SR05-2: *Borderplex Economic Outlook: 2005-2007*  
SR06-1: *Borderplex Long-Term Economic Trends to 2025*  
SR06-2: *Borderplex Economic Outlook: 2006-2008*  
SR07-1: *Borderplex Long-Term Economic Trends to 2026*  
SR07-2: *Borderplex Economic Outlook: 2007-2009*  
SR08-1: *Borderplex Long-Term Economic Trends to 2027*  
SR08-2: *Borderplex Economic Outlook: 2008-2010*  
SR09-1: *Borderplex Long-Term Economic Trends to 2028*  
SR09-2: *Borderplex Economic Outlook: 2009-2011*  
SR10-1: *Borderplex Long-Term Economic Trends to 2029*  
SR10-2: *Borderplex Economic Outlook: 2010-2012*  
SR11-1: *Borderplex Economic Outlook: 2011-2013*  
SR12-1: *Borderplex Economic Outlook: 2012-2014*  
SR13-1: *Borderplex Economic Outlook: 2013-2015*  
SR14-1: *Borderplex Economic Outlook to 2016*  
SR15-1: *Borderplex Economic Outlook to 2017*

*Technical Report TX16-2* is a publication of the **Border Region** Modeling Project and the Department of Economics & Finance at the University of Texas at El Paso. For additional Border Region information, please visit the [www.academics.utep.edu/border](http://www.academics.utep.edu/border) section of the UTEP web site.







**Border Region Modeling Project – CBA 236**  
**UTEP Department of Economics & Finance**  
**500 West University Avenue**  
**El Paso, TX 79968-0543**

[www.utep.edu](http://www.utep.edu)