

2021

2022 Calendar: Wish you were here. . .

Special Collections Staff
University of Texas at El Paso

Follow this and additional works at: <https://scholarworks.utep.edu/calendars>

Recommended Citation

Staff, Special Collections, "2022 Calendar: Wish you were here. . ." (2021). *Annual Calendars*. 7.
<https://scholarworks.utep.edu/calendars/7>

This Book is brought to you for free and open access by the Special Collections Department at ScholarWorks@UTEP. It has been accepted for inclusion in Annual Calendars by an authorized administrator of ScholarWorks@UTEP. For more information, please contact lweber@utep.edu.

2022 Calendar

Wish you were here...



C.L. Sonnichsen Special Collections Department
The University of Texas at El Paso Library

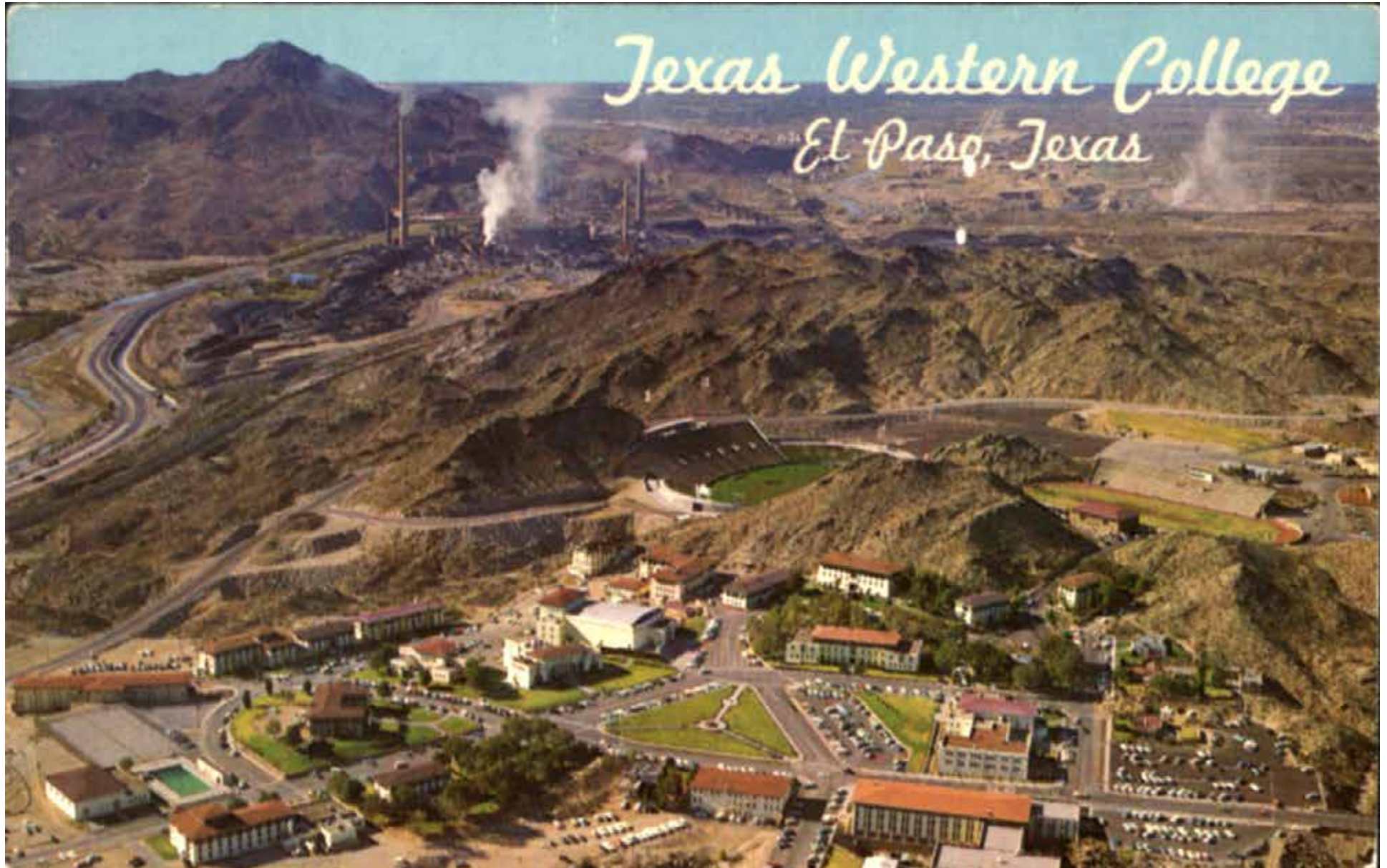


"Great White Way", Haskell Monroe postcard collection, PH088

This postcard features electric lights in El Paso and is from the Haskell Monroe postcard collection, PH088. Dr. Monroe was a history professor and president of UTEP from 1980 – 1987.

JANUARY 2022

Sunday	Monday	Tuesday	Wednesday	Thursday	Friday	Saturday
						<i>New Year's Day</i> 1
2	3	4	5	<i>Día de los Reyes Magos (Epiphany)</i> 6	7	8
9	10	11	12	13	14	15
16	<i>Martin Luther King Jr. Day</i> 17	18	19	20	21	22
23	24	25	26	27	28	29
30	31					

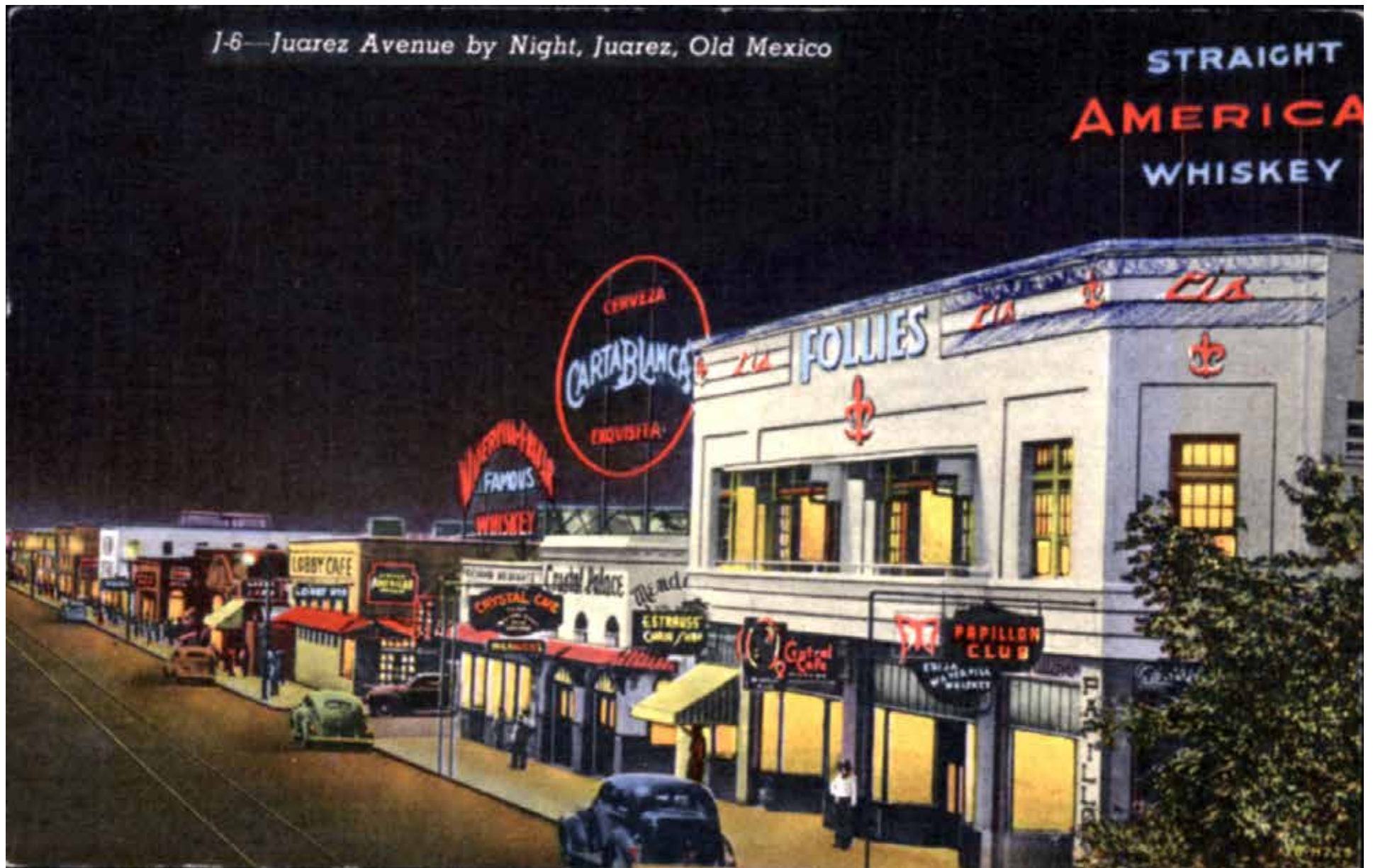


“Texas Western College”, El Paso, Texas, El Paso photo file, PH001

This 1966 postcard of Texas Western College (now UTEP) was donated by Jefferson Bransford and includes Sun Bowl Stadium, which was constructed in 1963. The stadium hosts the annual Sun Bowl game in late December.

FEBRUARY 2022

Sunday	Monday	Tuesday	Wednesday	Thursday	Friday	Saturday
		<i>Chinese New Year</i> 1	<i>Groundhog Day</i> <i>Día de la Candelaria</i> 2	3	4	5
6	7	8	9	10	11	12
13	<i>Valentine's Day</i> 14	15	16	17	18	19
20	<i>Presidents' Day</i> 21	22	23	24	25	26
27	28					

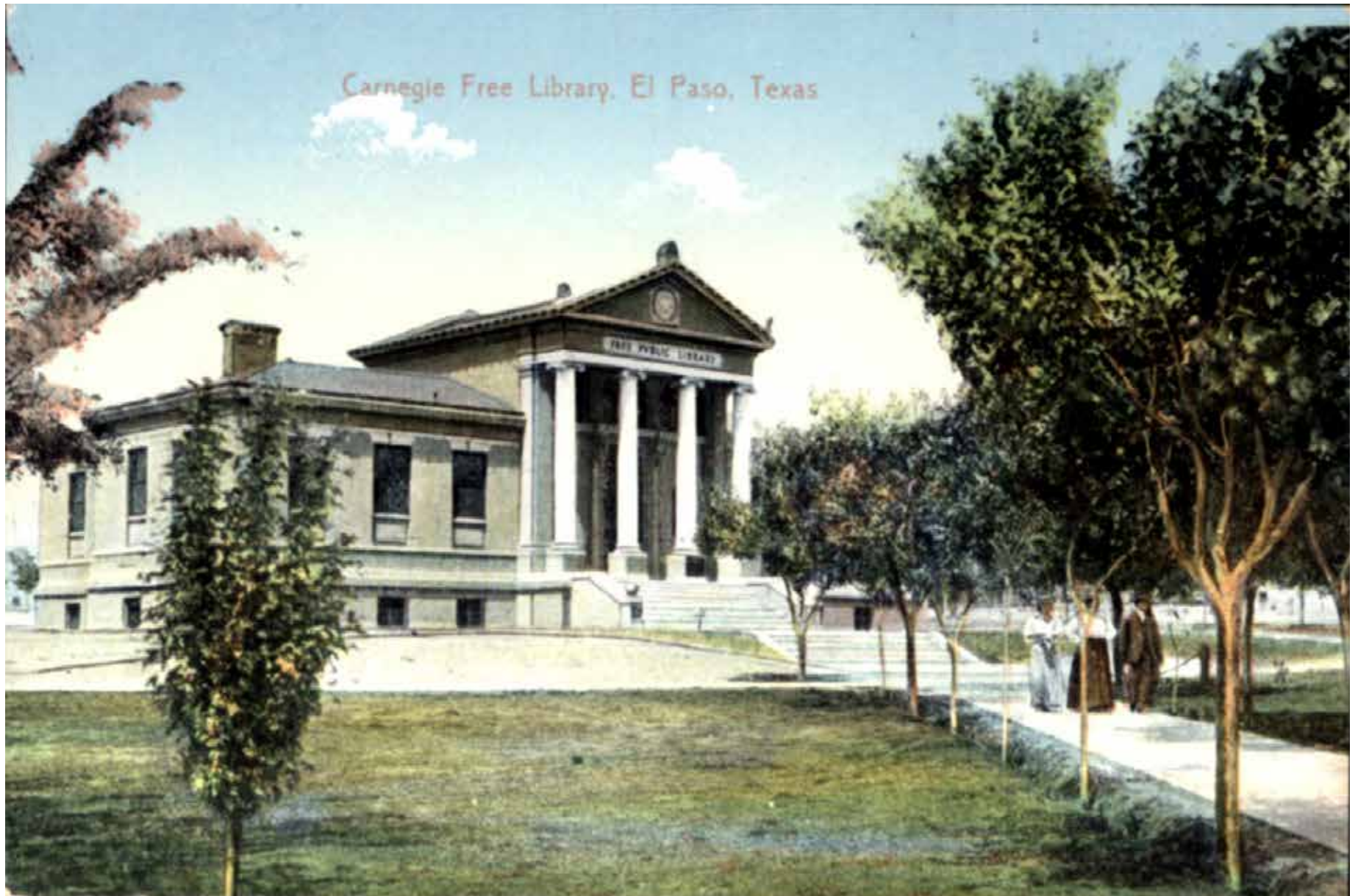


"Juarez Avenue by Night, Juarez, Old Mexico", Bobbi Sago postcard collection, PH057

Starting with Prohibition, night clubs in Ciudad Juárez were very popular with visitors from the United States. Glamorous international stars often performed at clubs in Juárez.

MARCH 2022

Sunday	Monday	Tuesday	Wednesday	Thursday	Friday	Saturday
		<i>Mardi Gras</i> 1	<i>Ash Wednesday</i> 2	3	4	5
6	7	<i>International Women's Day</i> 8	9	10	11	12
<i>Daylight Savings Time Begins</i> 13	14	15	<i>Purim</i> 16	<i>St. Patrick's Day</i> 17	18	19
<i>Vernal Equinox</i> 20	21	22	23	24	25	26
27	28	29	30	<i>César Chávez Day</i> 31		



“Carnegie Free Library, El Paso, Texas”, Stansel postcard collection, PH049

Founded in 1894 by Mary Irene Stanton, the El Paso Public Library was originally housed in a room in the Sheldon Building. With financial assistance from Andrew Carnegie in 1902, the city supported the construction of a Carnegie Library in El Paso. The new library opened on April 25, 1904 and was demolished in 1968.

APRIL 2022

Sunday	Monday	Tuesday	Wednesday	Thursday	Friday	Saturday
					1	<i>Ramadan Begins At Sundown</i> 2
<i>National Library Week Begins</i> 3	4	5	6	7	8	9
<i>Palm Sunday</i> 10	11	<i>National Library Workers' Day</i> 12	13	14	<i>Good Friday Passover Begins at Sundown</i> 15	16
<i>Easter Sunday</i> 17	18	19	20	21	22	<i>Passover Ends at Sundown</i> 23
24	25	26	27	28	29	30



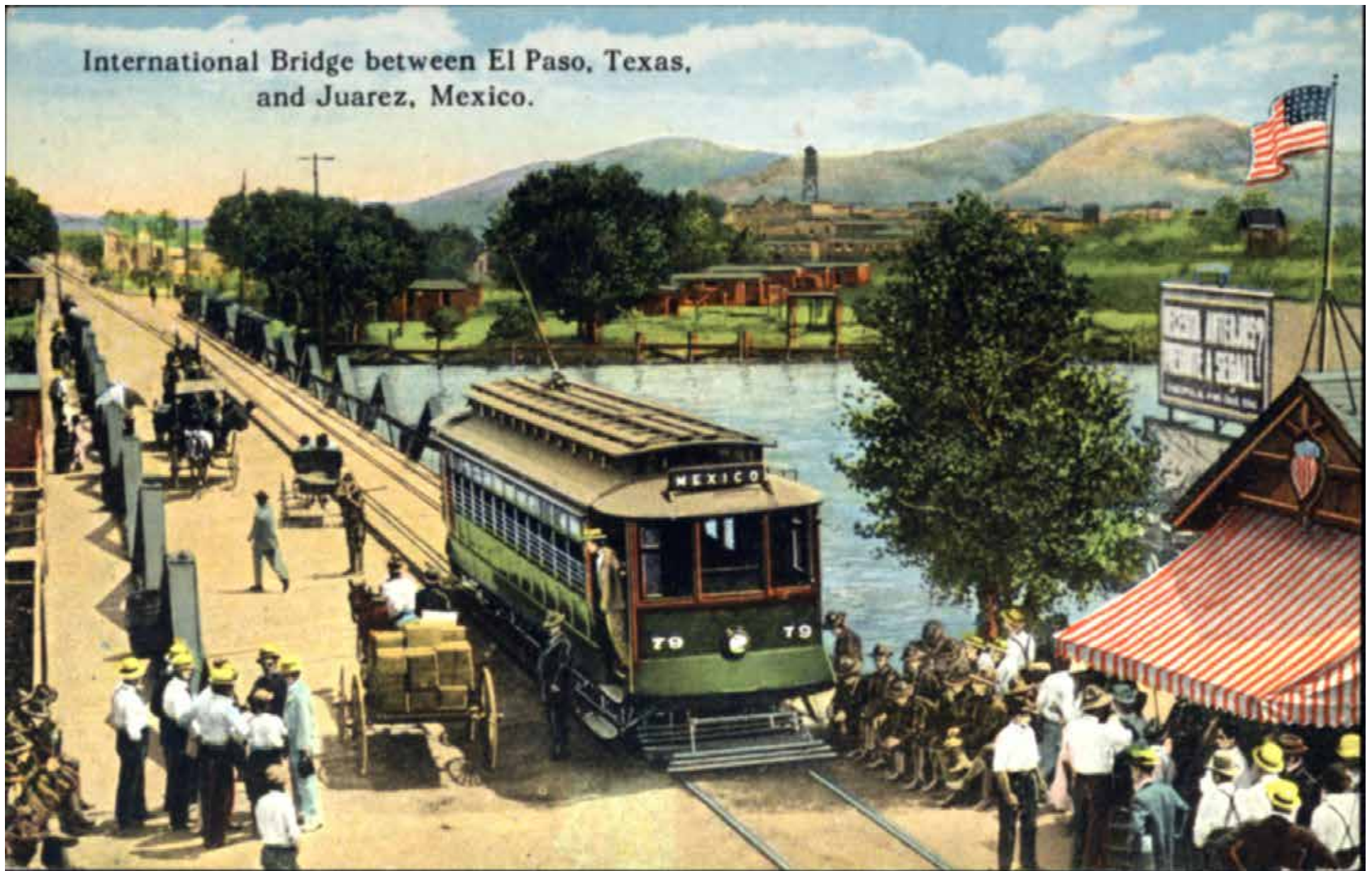
337—*El Paso Municipal Airport, El Paso, Texas*

El Paso Municipal Airport, El Paso photo file, PH001

The El Paso Municipal Airport, located near the east side of the Franklin Mountains, was built in 1928 and closed in 1945. Some early airlines that used the airport included Standard, Maddux, and Western Air Express.

MAY 2022

Sunday	Monday	Tuesday	Wednesday	Thursday	Friday	Saturday
<i>Ramadan Ends at Sundown</i> 1	<i>Eid Al-Fitr Begins at sundown</i> 2	3	4	<i>Cinco de Mayo</i> 5	6	7
<i>Mothers' Day</i> 8	9	<i>Mexican Mothers' Day</i> 10	11	12	13	14
15	16	17	18	19	20	21
22	23	24	25	26	27	28
29	<i>Memorial Day</i> 30	31				

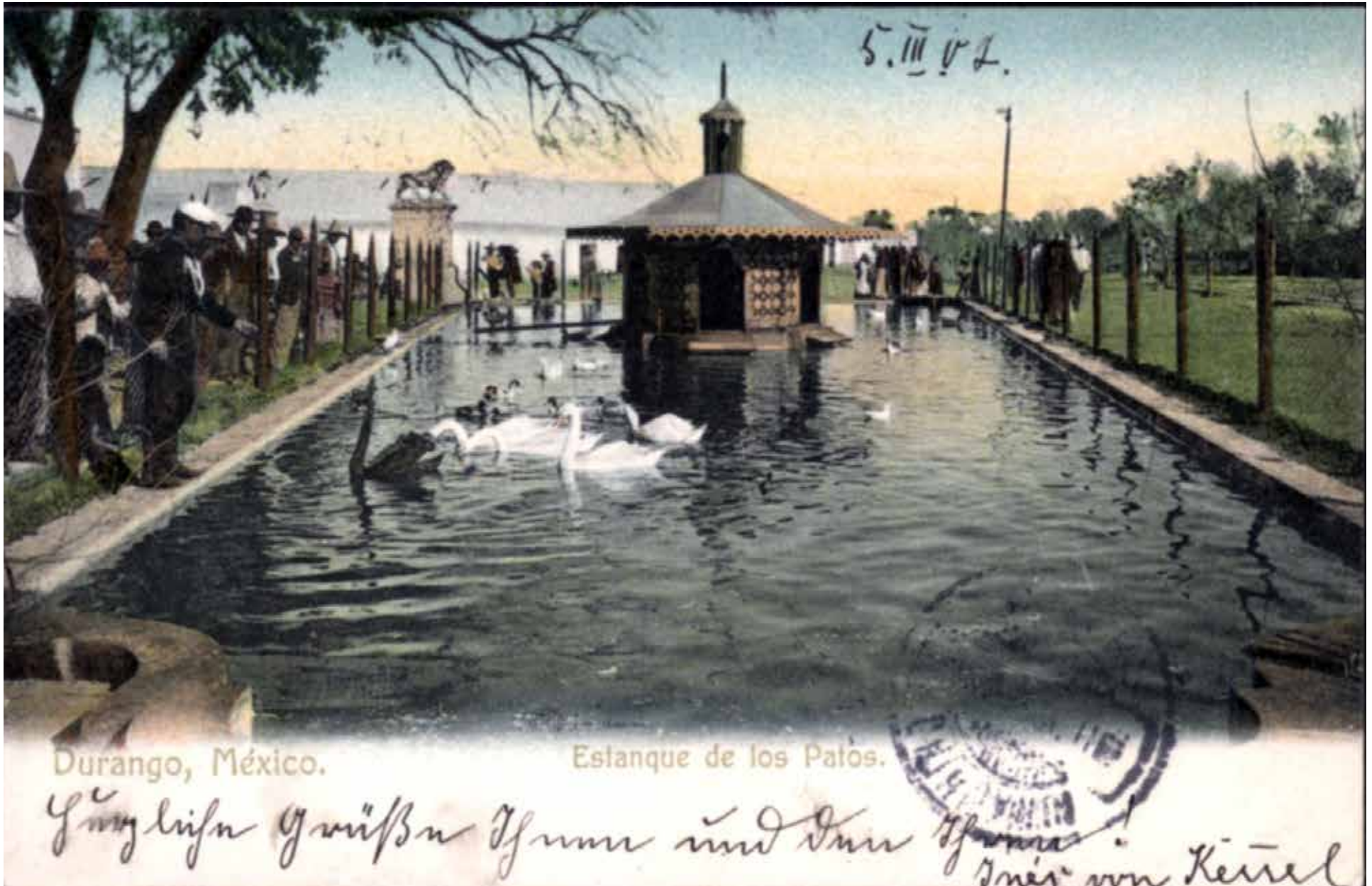


International Bridge, Haskell Monroe postcard collection, PH088

This early twentieth-century postcard of the “International Bridge between El Paso, Texas, and Juarez, Mexico” includes groups of soldiers and one of the streetcars that regularly crossed the border.

JUNE 2022

Sunday	Monday	Tuesday	Wednesday	Thursday	Friday	Saturday
			1	2	3	4
5	6	7	8	9	10	11
12	13	<i>Flag Day</i> 14	15	16	17	18
<i>Fathers' Day</i> <i>Juneteenth</i> 19	20	<i>Summer Solstice</i> 21	22	23	24	25
26	27	28	29	30		



Durango, México, Tillie Krakauer Steffian Zork postcard album, PH094

This postcard shows an “Estanque de los Patos” in Durango, México. The postcards collected in this album by Tillie Krakauer Steffian Zork, a member of a prominent El Paso merchant family, date from the early twentieth century and are from the U.S., Mexico, and Europe.

JULY 2022

Sunday	Monday	Tuesday	Wednesday	Thursday	Friday	Saturday
					1	2
3	<i>Independence Day</i> 4	5	6	7	8	9
10	11	12	13	<i>Bastille Day</i> 14	15	16
17	18	19	20	21	22	23
24	25	26	27	28	29	30
31						



Popular Dry Goods company, Bobbi Sago postcard collection, PH057

The Popular Dry Goods Department Store was organized in 1902 by Adolph Schwartz. The Popular remained the largest locally-owned retail enterprise in El Paso until its closure in September 1995. Providing jobs and “high fashion” to both sides of the border region, The Popular was an economic and cultural force in the El Paso borderlands. The Popular Dry Goods Company records, MS317, are housed in UTEP’s Special Collections Department.

AUGUST 2022

Sunday	Monday	Tuesday	Wednesday	Thursday	Friday	Saturday	
	1	2	3	4	5	6	
7	8	9	10	11	12	13	
14	15	16	17	18	19	20	
21	22	23	24	25	<i>Women's Equality Day</i>	26	27
28	29	30	31				



“Corner Juárez Avenue and 16th of September Street, Juárez, Mexico”, Wayne Brendt print and postcard collection, MS245

This postcard from the Wayne Brendt print and postcard collection, MS245, shows the corner of Juárez Avenue and 16th of September Street with Casa Oppenheim and the Aduana (Custom House) in Ciudad Juárez, Mexico. The Aduana was used for customs headquarters until 1965.

SEPTEMBER 2022

Sunday	Monday	Tuesday	Wednesday	Thursday	Friday	Saturday
				1	2	3
4	<i>Labor Day</i> 5	6	7	8	9	10
11	12	13	14	15	<i>Mexican Independence Day</i> 16	17
18	19	20	21	<i>Autumnal Equinox</i> 22	23	24
<i>Rosh Hashanah Begins at Sundown</i> 25	26	27	28	29	30	



Taft – Diaz visit postcard, Ruth Emma Tompkins Penfield postcard collection, PH092

This postcard commemorates the October 16, 1909 meeting of Mexican President Porfirio Díaz and U.S. President William Howard Taft in El Paso, Texas and Ciudad Juárez, Mexico. It was the first meeting in history between a president of the United States and a president of Mexico.

OCTOBER 2022

Sunday	Monday	Tuesday	Wednesday	Thursday	Friday	Saturday
						1
2	3 <i>Yom Kippur Begins at Sundown</i>	4	5	6	7	8
9 <i>Indigenous People's Day</i>	10	11	12	13	14	15
16	17	18	19	20	21	22
23	24	25	26	27	28	29
30 <i>Halloween</i>	31					



Library and Museum, Carlsbad, New Mexico, Mary A. Sarber postcard collection, PH089

The back of this 1943 postcard states “Here are housed many interesting books on Southwestern history, and an excellent collection of artifacts of ancient Basketmaker culture.”

The Mary A. Sarber postcard collection contains hundreds of postcards featuring women and libraries from the early twentieth century. Sarber was an author and the Southwest Librarian at the Border Heritage Center of the El Paso Public Library for many years.

NOVEMBER 2022

Sunday	Monday	Tuesday	Wednesday	Thursday	Friday	Saturday
		<i>All Saints' Day</i> 1 <i>Día de los Muertos</i>	<i>All Souls' Day</i> 2 <i>Día de los Muertos</i>	3	4	5
<i>Daylight Savings Time ends</i> 6	7	8	9	10	<i>Veterans' Day</i> 11	12
13	14	15	16	17	18	19
20	21	22	23	<i>Thanksgiving</i> 24	25	26
27	28	29	30			



“Winter Scene of the Church at Questa, New Mexico”, Ruth Emma Tompkins Penfield postcard collection, PH092

This collection consists of postcards collected by Ruth Emma Tompkins Penfield (1887 – 1970) and was donated by Sharon and Jon Amastae. Tompkins Penfield was Jon’s grandmother. She primarily collected these postcards from 1905 – 1910, and the majority of the postcards are from her friends. Tompkins Penfield was a teacher and lived in White Oaks, Mesilla, and Lincoln, New Mexico.

DECEMBER 2022

Sunday	Monday	Tuesday	Wednesday	Thursday	Friday	Saturday
				1	2	3
4	5	6	7	8	9	10
11	<i>Our Lady of Guadalupe Day</i>	12	13	14	15	16
<i>Chanukah Begins at Sundown</i>	18	19	20	<i>Winter Solstice</i>	21	22
						23
<i>Christmas Day</i>	25	<i>Chanukah Ends Kwanzaa (ends Jan. 1)</i>	26	27	28	29
						30
						<i>New Year's Eve</i>
						31

JANUARY 2023

Sunday	Monday	Tuesday	Wednesday	Thursday	Friday	Saturday
<i>New Year's Day</i> 1	2	3	4	5	<i>Día de los Reyes Magos (Epiphany)</i> 6	7
8	9	10	11	12	13	14
15	<i>Martin Luther King Jr. Day</i> 16	17	18	19	20	21
<i>Chinese New Year</i> 22	23	24	25	26	27	28
29	30	31				

FEBRUARY 2023

Sunday	Monday	Tuesday	Wednesday	Thursday	Friday	Saturday	
			1	<i>Groundhog Day</i> <i>Día de la Candelaria</i>	2	3	4
5	6	7	8	9	10	11	
12	13	<i>Valentine's Day</i>	14	15	16	17	18
19	<i>Presidents' Day</i>	20	21	22	23	24	25
26	27	28					

Wish you were here...



Old Mexico Curio Shop, Ciudad Juárez, “While You Are Sober Write Some Cards”, El Paso photo file, PH001

Cover image: “Greetings from El Paso, Texas”, 1945, Bobbi Sago postcard collection, PH057. Roberta Ann “Bobbi” Sago (1964 – 2018) was a theater professional, an author, and an archivist at the UTEP Library and at Black Hills State University in South Dakota.

This calendar features postcards in the C.L. Sonnichsen Special Collections Department. Real-photo and mechanically produced postcards appear in personal and family papers, both as souvenirs and as part of the correspondence. Our postcard collections support research in multiple areas: communication, local history, architecture and historic preservation, social history, business, art, and fashion are some examples.

C.L. Sonnichsen Special Collections Department
The University of Texas at El Paso Library
500 W. University Avenue
El Paso, Texas 79968
915-747-5697

utep.edu/library/special-collections/index.htm

To donate, please visit:
utep.edu/library/Files/docs/special-collections/friends_endow.pdf

