

1925

Flowsheet 1925

The Students of the College of Mines and Metallurgy, University of Texas

Follow this and additional works at: http://digitalcommons.utep.edu/yr_books

Recommended Citation

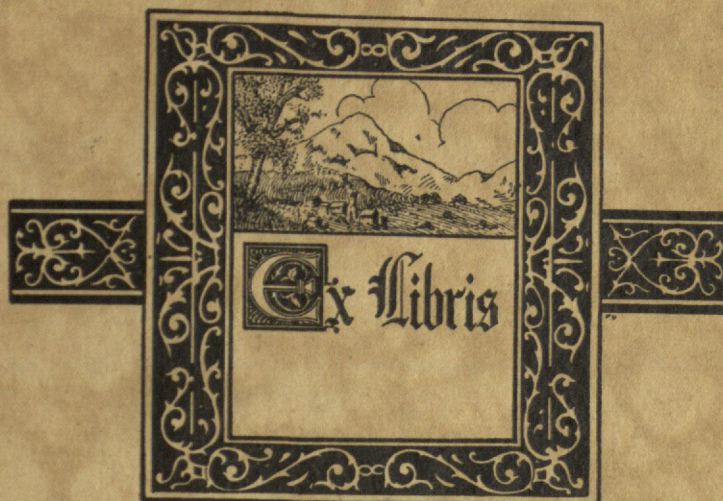
The Students of the College of Mines and Metallurgy, University of Texas, "Flowsheet 1925" (1925). *Yearbooks*. 2.
http://digitalcommons.utep.edu/yr_books/2

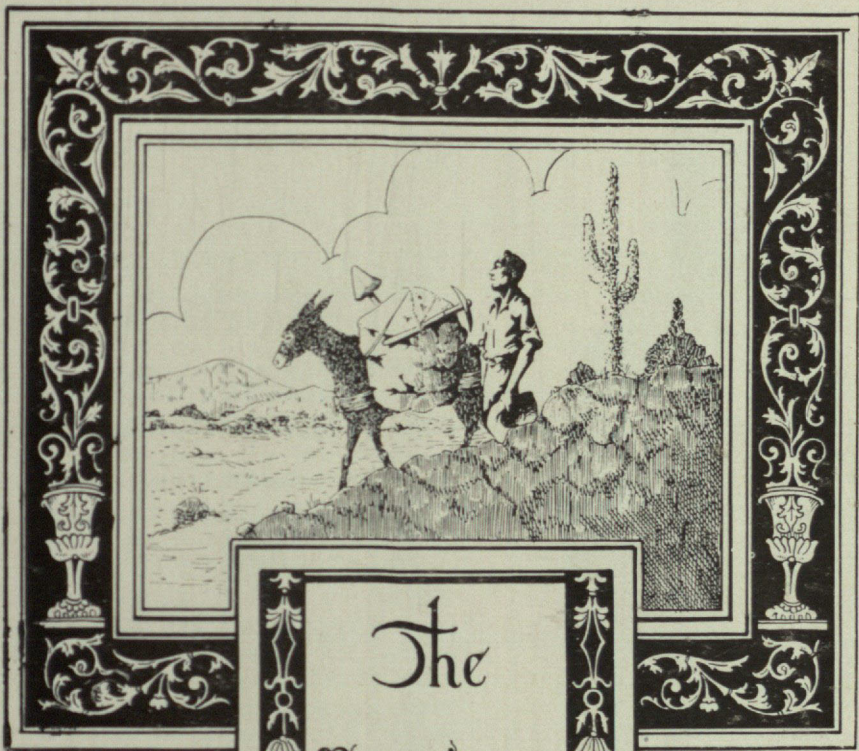
This Book is brought to you for free and open access by the UTEP History Resources at DigitalCommons@UTEP. It has been accepted for inclusion in Yearbooks by an authorized administrator of DigitalCommons@UTEP. For more information, please contact lweber@utep.edu.

FLOWSHEET



1925





The
FLOW SHEET
1925.





THE FLOW SHEET



BOOK I

Faculty and Administration

BOOK II

Classes

BOOK III

Organizations

BOOK IV

Publications

BOOK V

Athletics

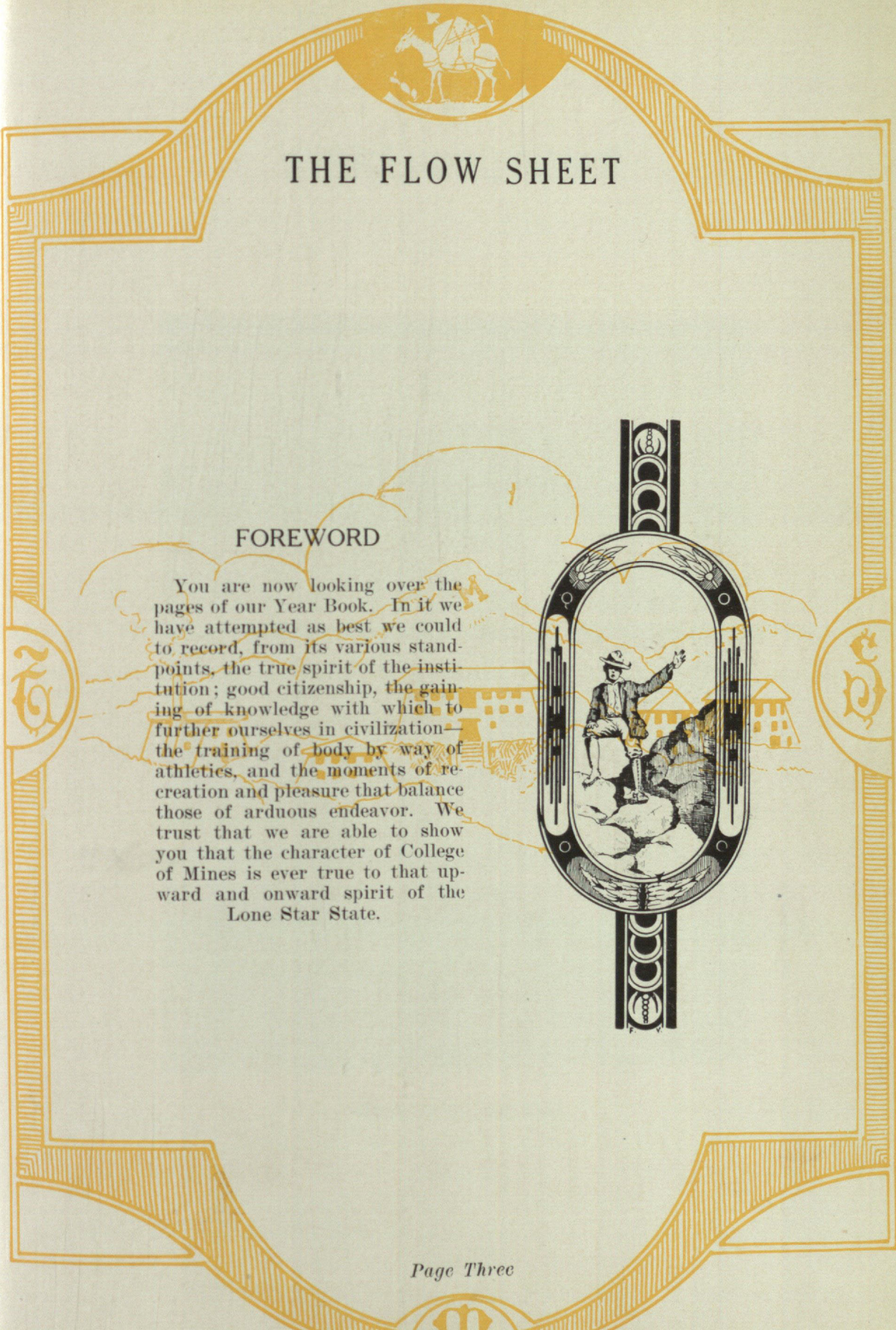
BOOK VI

Activities

BOOK VII

Advertisers

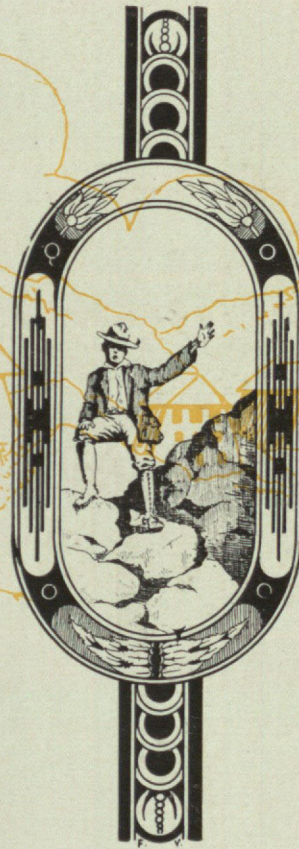




THE FLOW SHEET

FOREWORD

You are now looking over the pages of our Year Book. In it we have attempted as best we could to record, from its various standpoints, the true spirit of the institution; good citizenship, the gaining of knowledge with which to further ourselves in civilization—the training of body by way of athletics, and the moments of recreation and pleasure that balance those of arduous endeavor. We trust that we are able to show you that the character of College of Mines is ever true to that upward and onward spirit of the Lone Star State.





THE FLOW SHEET

TO

MRS. W. H. SEAMON

Who has a place in the heart of every Miner, and
to whom we owe the memory of many
pleasant hours.

We Dedicate This Book.





THE FLOW SHEET

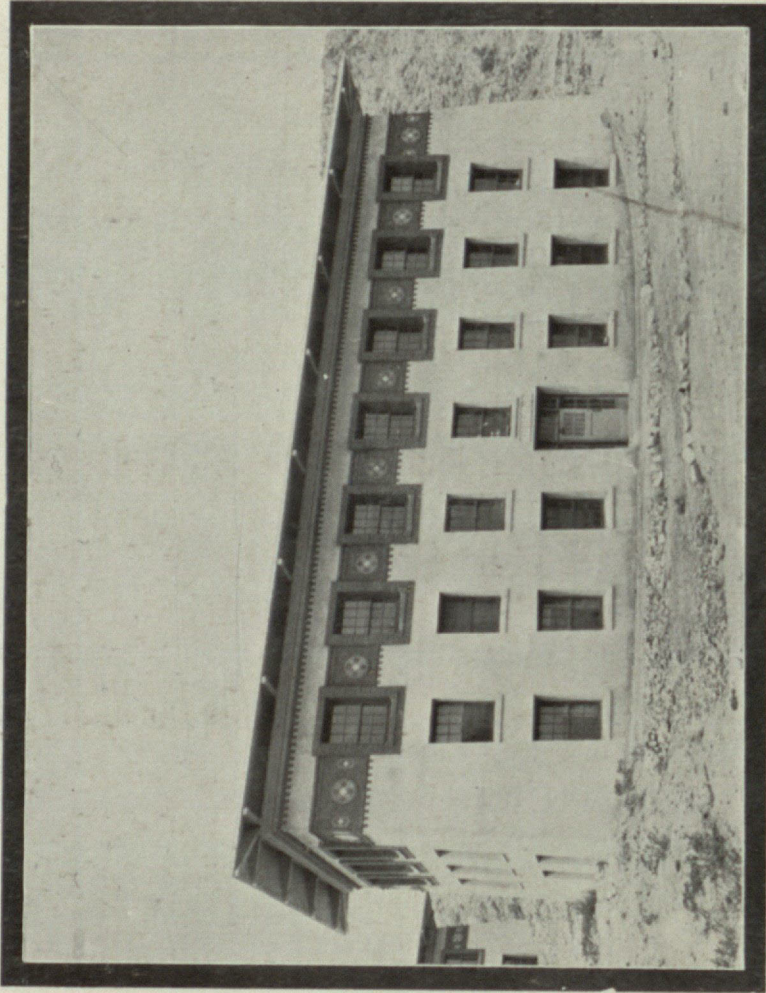


MRS. W. H. SEAMON





THE FLOW SHEET



KELLY HALL

29

30

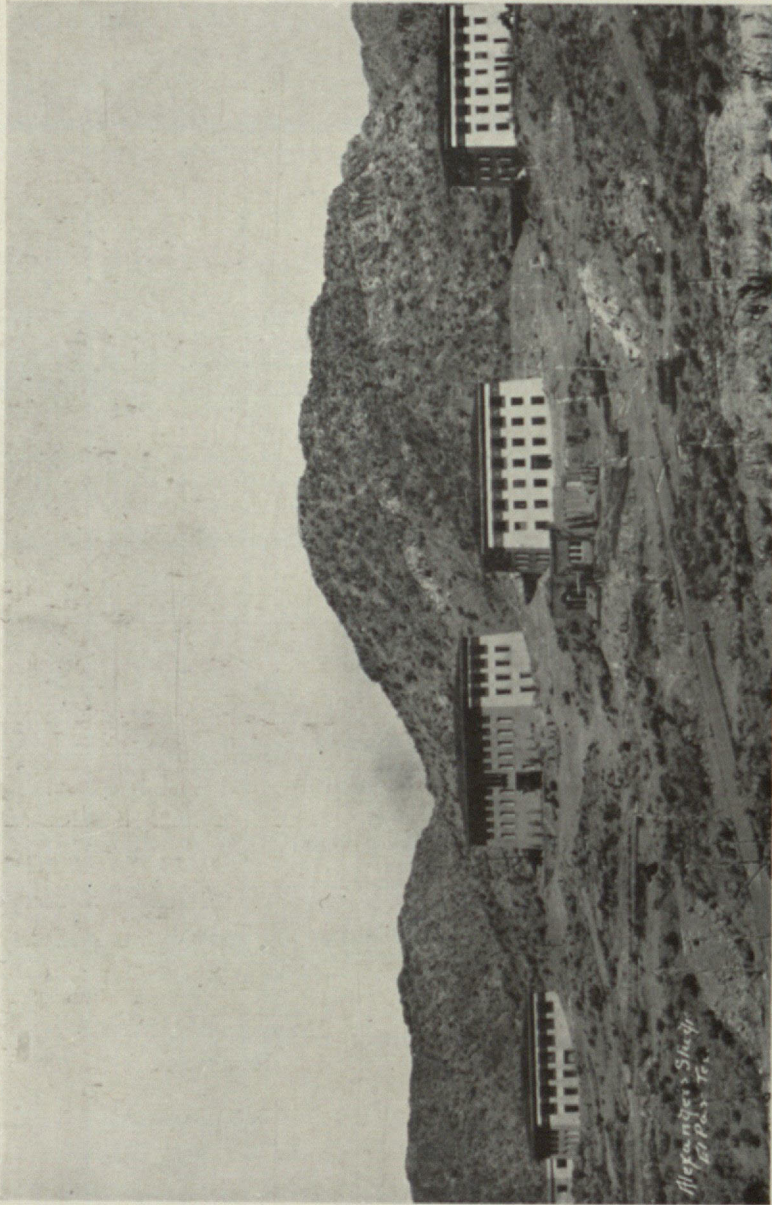




FACULTY
and
ADMINISTRATION



THE FLOW SHEET



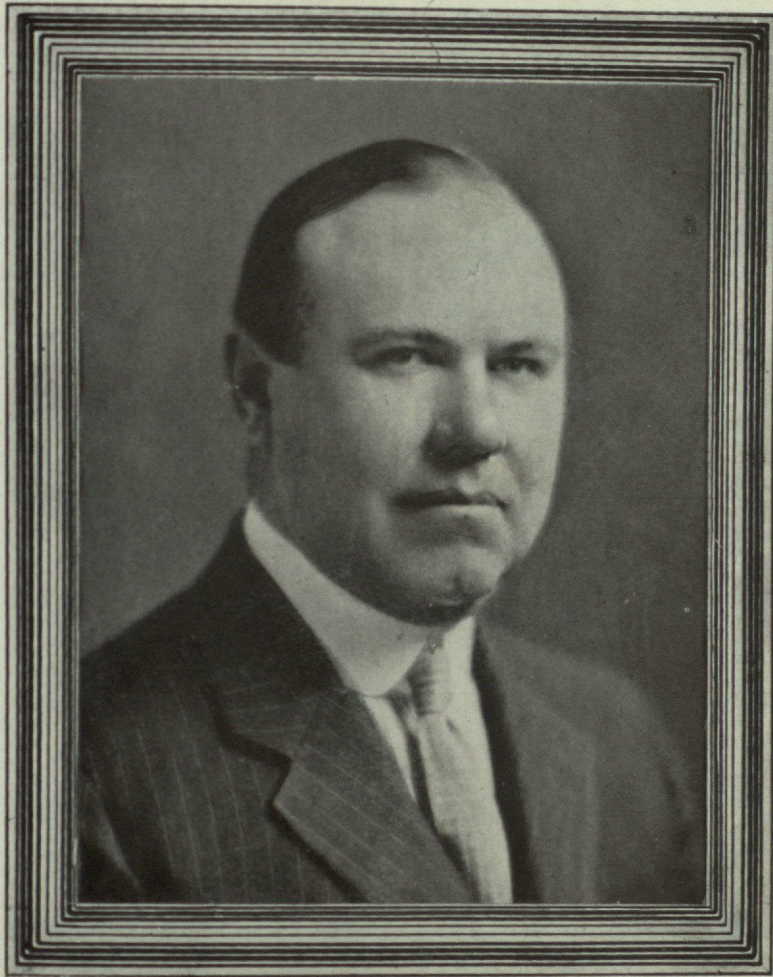
THE CAMPUS

*Stegeringer's Shop
1212 N. 7th*





THE FLOW SHEET

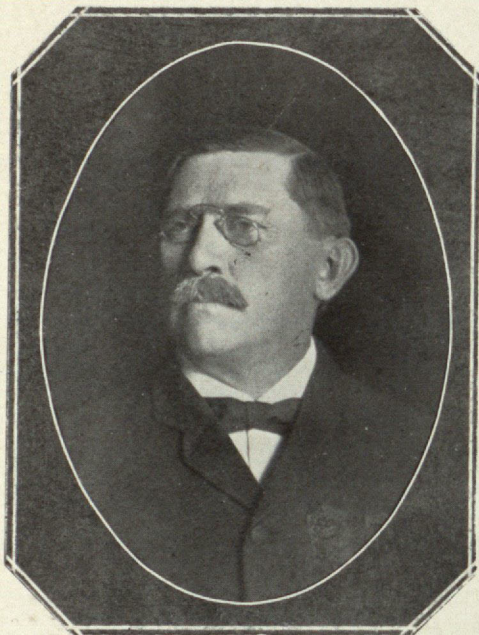


JOHN W. KIDD, DEAN





THE FLOW SHEET



WILLIAM HENRY SEAMON

B. S., University of Virginia, 1881.

Professor of Natural Sciences, Miller School, Virginia, 1882-88; Professor of Chemistry and Metallurgy, Missouri School of Mines, 1888-95; President and Professor of Mining, New Mexico School of Mines, 1895-98; Superintendent of Lead and Zinc Mine, Missouri, 1890-92; Head of Exploring Parties in Alaska, 1898-99; Manager of Copper Bell Mining and Smelting Co., Arizona, 1900-02; Superintendent of Tin Mine in North Carolina, 1903; Consulting Chemist and Metallurgist, Chihuahua, Mexico, 1904-10; Mining lead and silver in Chihuahua, Mexico, 1911-12; Superintendent of Swansea Copper Smelting Co., Arizona, 1912; Superintendent of La Dura Mines, Sonora, Mexico, 1913; Superintendent of Santa Rosalia Smelting Co., Mexico, 1915; Assistant Superintendent Magistral Smelting Co., Mexico, 1916; in niter

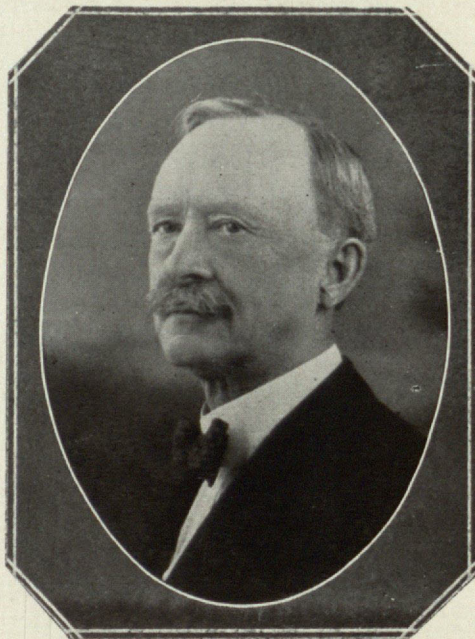
explorations in West Texas, 1917; Superintendent of Richmond Basin Silver Mine, Arizona, 1918; Professor of Mining and Geology, College of Mines and Metallurgy, University of Texas, 1918—.

EMMET ADDIS DRAKE

A. B., Wisconsin University, 1882.

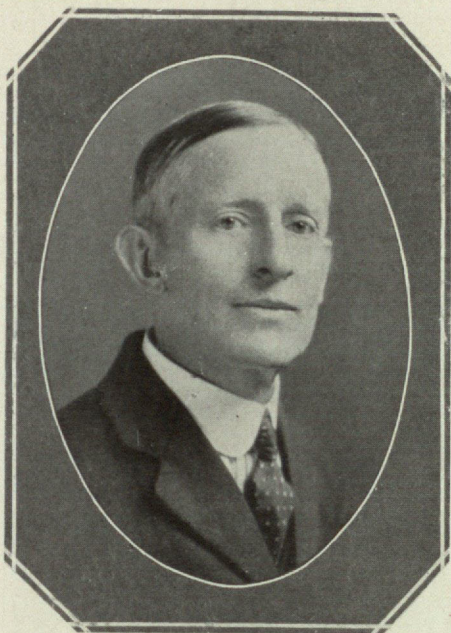
A. M., Wisconsin University, 1887.

Instructor, Wisconsin University, 1883-4; Instructor, Missouri School of Mines, 1885-91; Mining in Southwest Missouri, 1891-7; Professor of Languages, New Mexico School of Mines, 1897-1913; President of the Faculty, New Mexico School of Mines 1908-13; Associate Professor of English and Economics, College of Mines and Metallurgy, University of Texas, 1919—.





THE FLOW SHEET



FRANKLIN HUPP SEAMON

E. M., Missouri School of Mines and Metallurgy, 1891.

Assistant Chemist, Laughlin & Junction Iron & Steel Company, Mingo Junction, Ohio, 1891-92; Chemist and Assayer, Motolina Consolidated Mining Company, Zacatecas, Mexico, 1892; Chemist, Vacas Mining and Smelting Company, Vacas, Durango, Mexico, 1892-94; Chemist, Baradon y Cabras Mining Company, Guana-
cevi, Mexico, 1894-95; Ore Purchasing Agent, La Gran Fundicion Nacional Mexicana, Mexico, 1895-98; Proprietor of The Seamon Assay Company, Mining Engineering and Analytical Chemistry, El Paso, Texas, 1898-1915; Professor of Chemistry and Assaying, College of Mines and Metallurgy, University of Texas, 1915—.



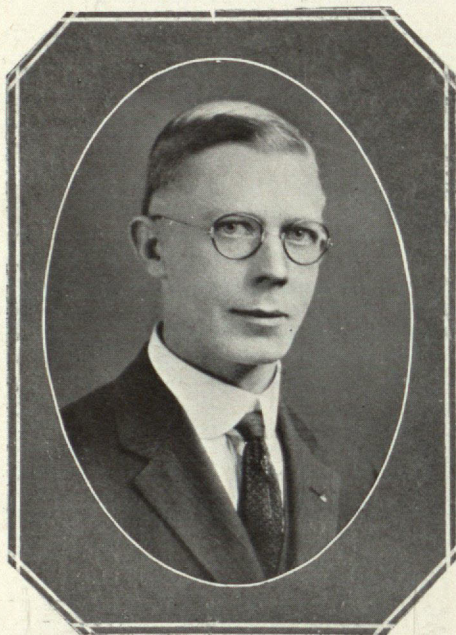
MYRA C. WINKLER

One Year in Rural School; Ten Years in El Paso Public Schools (the last four in El Paso High School); Superintendent of Schools, El Paso County, ten years; Adjunct Professor of History, College of Mines and Metallurgy, University of Texas, 1922—.





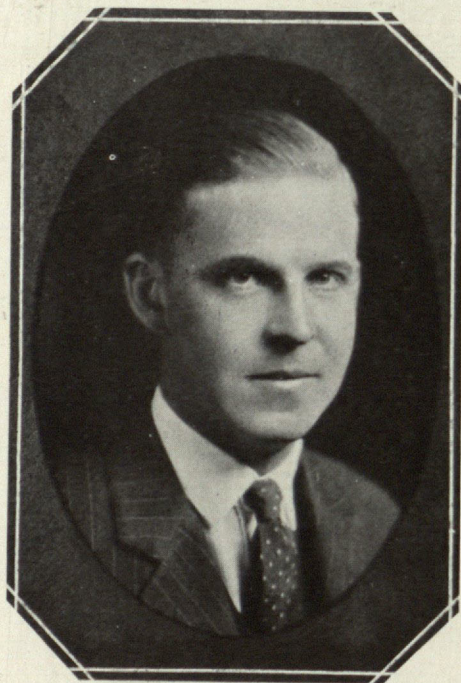
THE FLOW SHEET



LLOYD A. NELSON

E. M., Texas School of Mines, 1916.

Engineering Department, Cananea Consolidated Copper Company, 1916-17; Engineer, Phelps Dodge Corporation, Tyrone, New Mexico, 1917-18; Engineering Department, U. S. Reclamation Service, 1918; Engineer, Chino Copper Company, Santa Rita, New Mexico, 1918-19; Adjunct Professor of Engineering and Mathematics, College of Mines and Metallurgy, University of Texas, 1920—.



H. E. QUINN

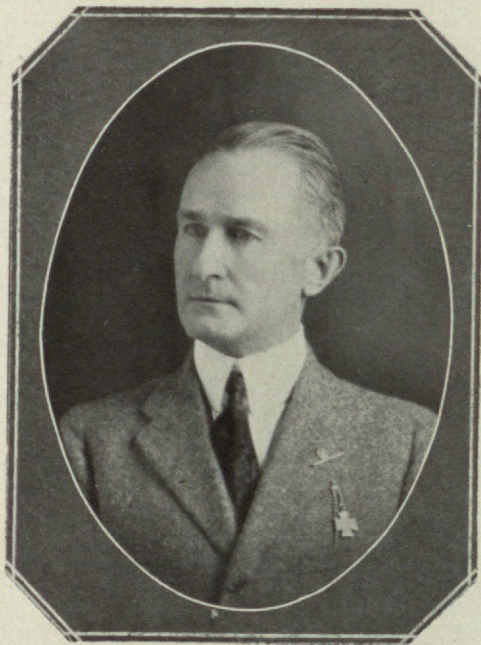
E. M. (Geology) University of Minnesota School of Mines, 1918.

Geological Survey, Oliver Mining Co., Wisconsin, 1919-1920; Instructor Geology University of Illinois 1921-1922; Post Graduate work Department of Geology University of Minnesota 1924; Adjunct Professor Mining and Geology College of Mines and Metallurgy, University of Texas, 1924—.





THE FLOW SHEET



FRANK GROCH

B. S. and E. M., Case School of Applied Science, Cleveland, Ohio, 1902.

Consulting Engineer, Ore Dressing and Mill Building in United States, Canada and Mexico; Professor of Metallurgy, College of Mines and Metallurgy, University of Texas, 1923—.

BURT FRANKLIN JENNESS, M. D.

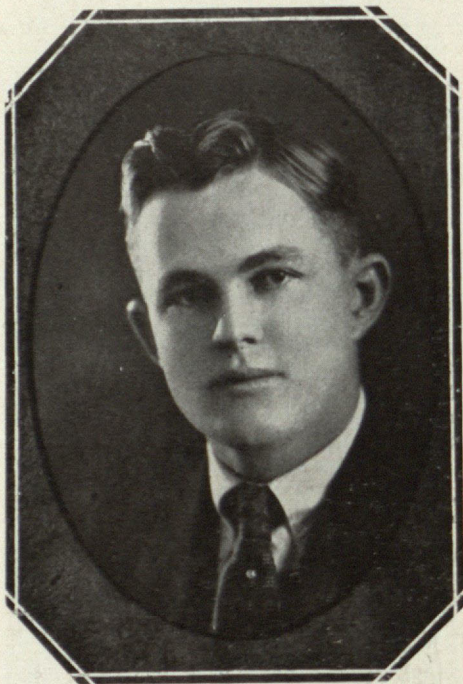
M. D., Dartmouth Medical College, 1899.
Graduate of Naval Medical School, 1903.

Service in Medical Corps, U. S. Navy, 12 years; Lieut. Commander, Medical Corps, U. S. Navy, retired; Lecturer of Hygiene and Sanitation and First Aid, College of Mines and Metallurgy, University of Texas, 1918—.





THE FLOW SHEET



GEORGE BLANTON POWELL

B. A., Rice, '21.

Graduate work, Texas University; Instructor Engineering and Mathematics; Athletic Director, College of Mines and Metallurgy, University of Texas, 1924—.

AN APPRECIATION

We, the students of the College of Mines, wish to devote this space in appreciation of the whole hearted support and the myriad favors that we have received from our many friends this year.

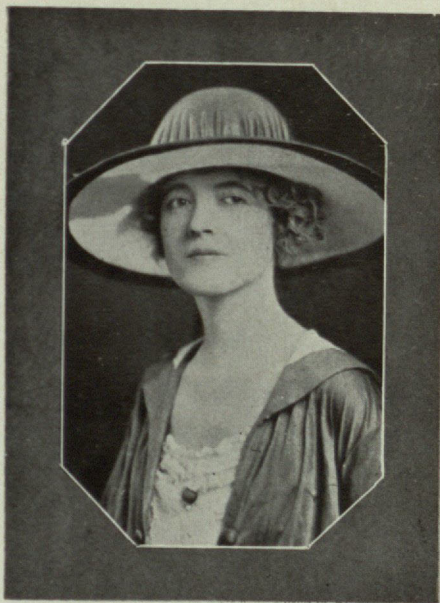




THE FLOW SHEET


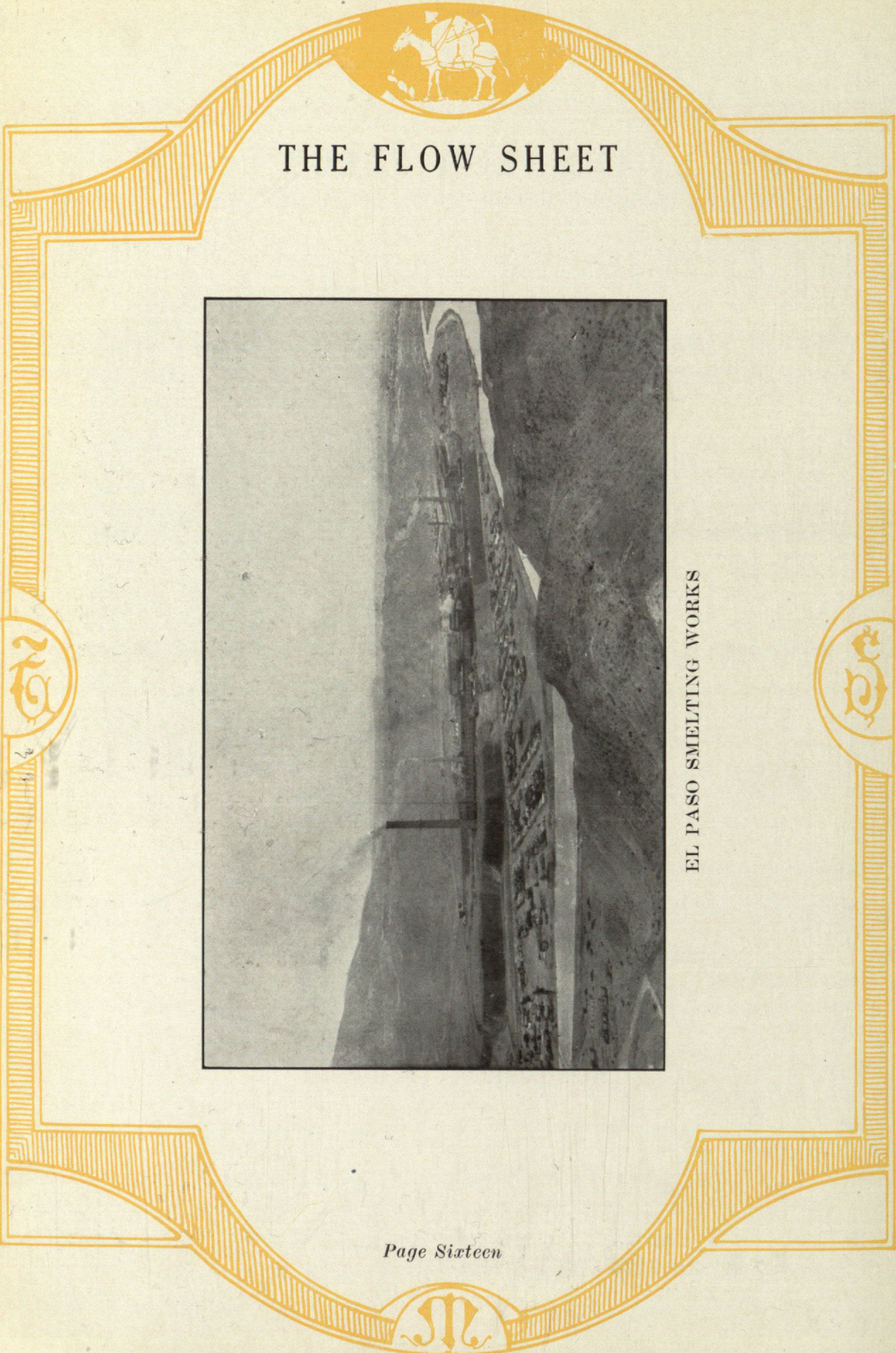
MRS. WEBB
Secretary to the Dean
Librarian

MRS. H. P. NELSON
Matron of Dormitories

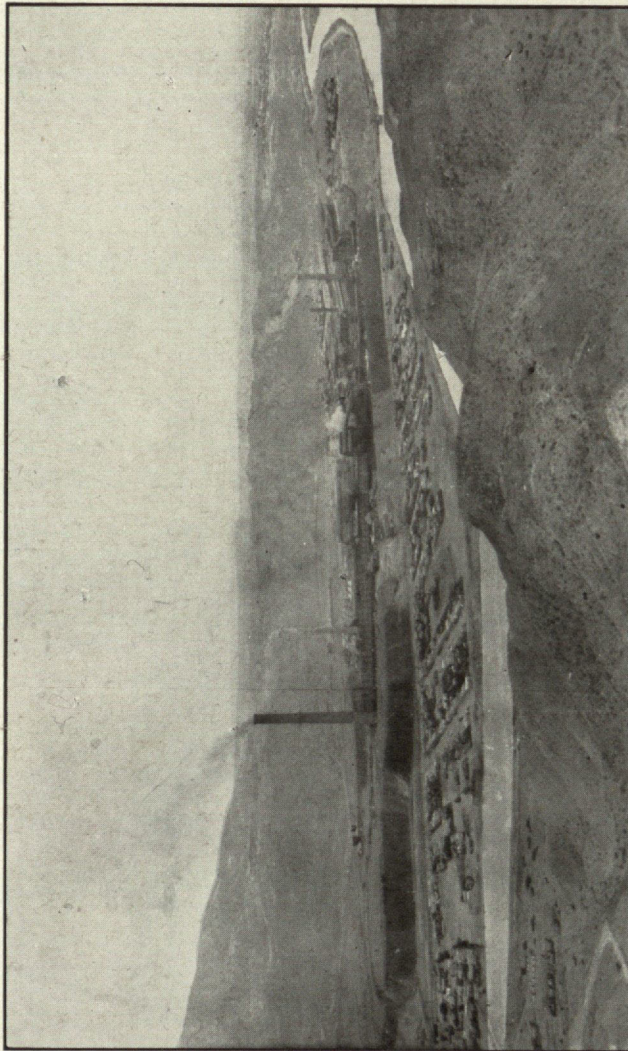


MISS RUTH AUGUR, Registrar





THE FLOW SHEET



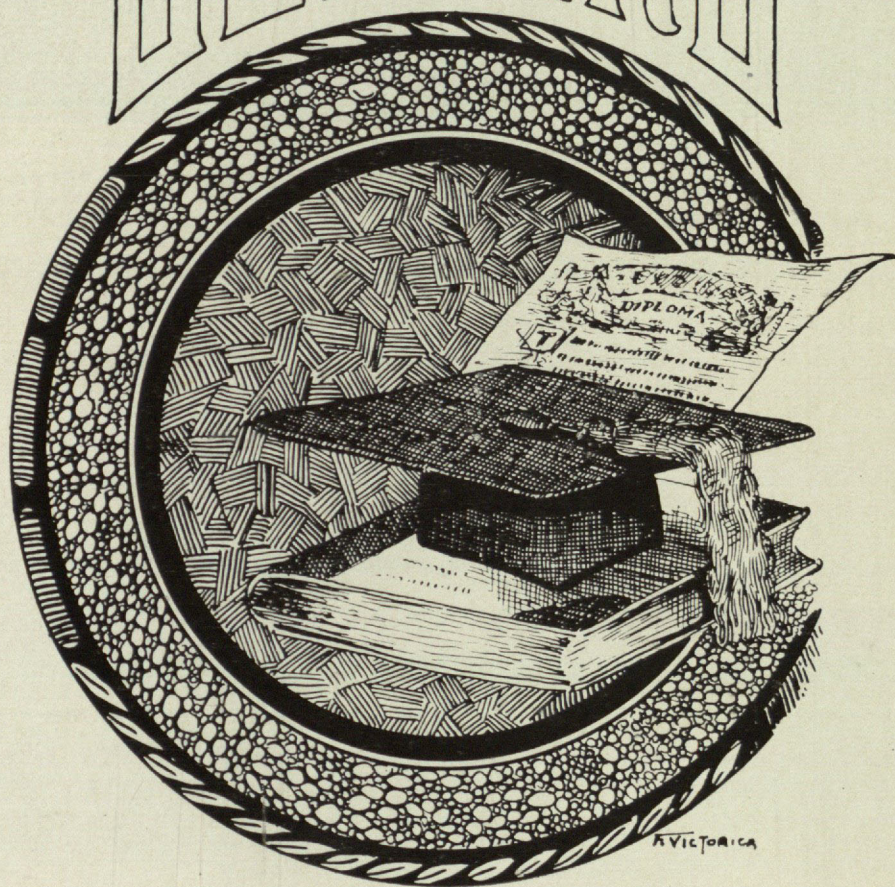
EL PASO SMELTING WORKS





THE FLOW SHEET

SENIORS



A. VICTORICA





THE FLOW SHEET

THE CLASS OF '25

Clarence E. Burbridge, Jr.
Clint, Texas

Daniel C. Cooney
Roswell, New Mexico

Arthur M. Evans
Uvalde, Texas

Berte R. Haigh
Los Angeles, Calif.

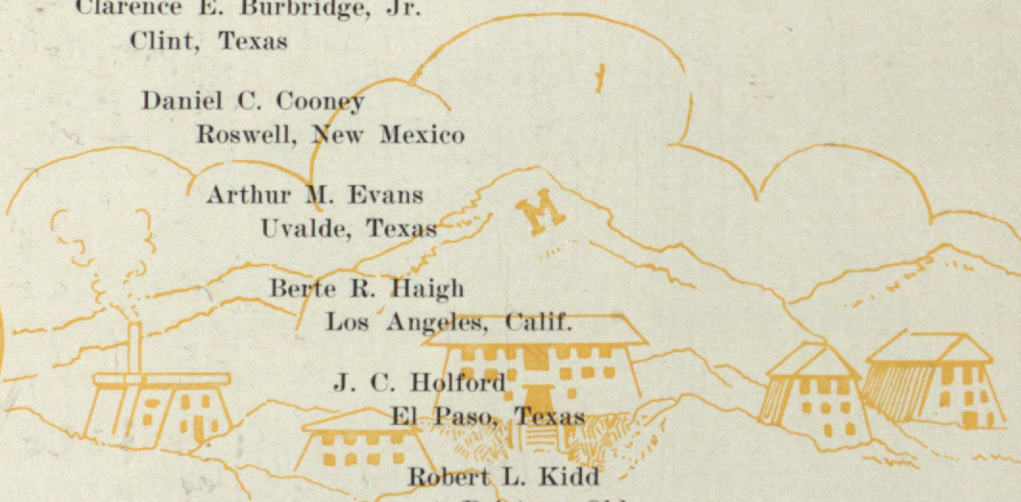
J. C. Holford
El Paso, Texas

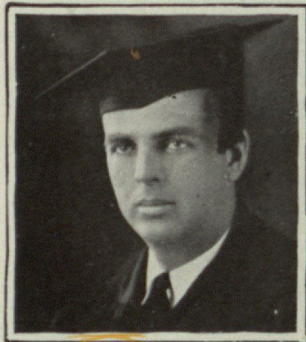
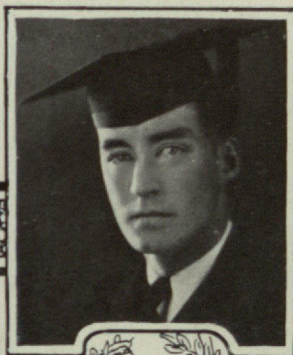
Robert L. Kidd
Bristow, Okla.

Rhedus Rhew
Kingsville, Texas

Morris C. Scherer
Texarkana, Texas

Thomas J. Woodside, Jr.
El Paso, Texas





**Clarence E. Burbridge, Jr.,
B. S.**

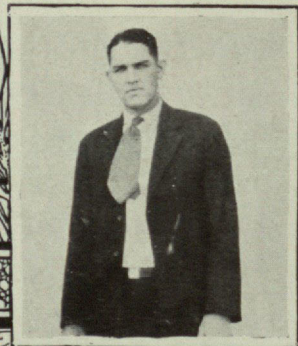
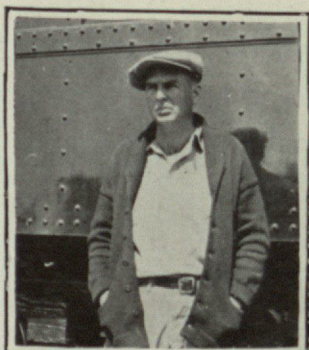
"Clawney"
Executive Com., '23, '24
Pres. Scientific Club, '24, '24
Sec. Treas. Students Association, '24, '25
Chairman Dormitory Committee, '24, '25
Sec. Rifle Club, '24, '25
Assistant Business Manager, Flow Sheet, '25
Junior Associate, A. I. M. E.

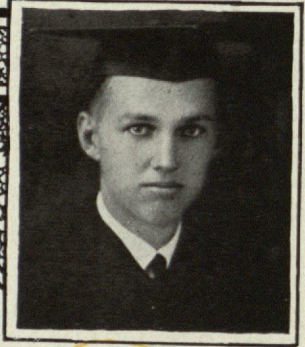
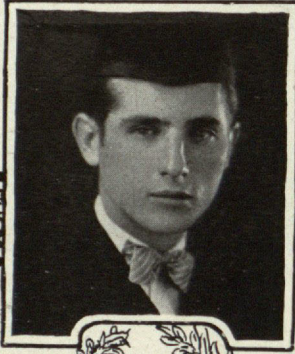
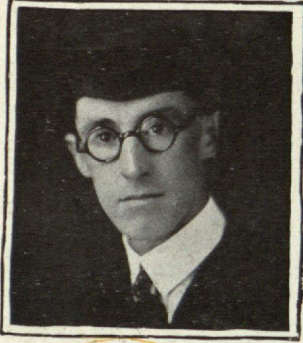
**Daniel C. Cooney, B. S.
"Dan"**

Pres. Student Assn., '24, '25
Football-Basketball Manager, '24, '25
President Rifle Club, '23, '24
Editor Prospector, '23, '24
Sec. Scientific Club, '23, '24
Executive Com., '23, '24
Junior Associate, A. I. M. E.
Mines Club

**Arthur M. Evans, B. S.
"Amos"**

Football, '21, '23, '24
Executive Com., '22, '23
Scientific Club, '21-'22, '23-'24
Rifle Club, '23, '24
"M" Club
Dormitory Club





Berte R. Haigh, B. S.
"Boitte"

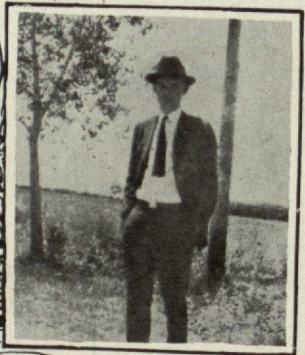
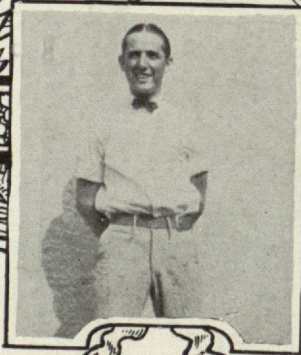
J. C. Holford, B. S.
"J. C."

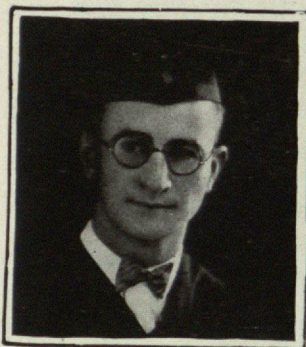
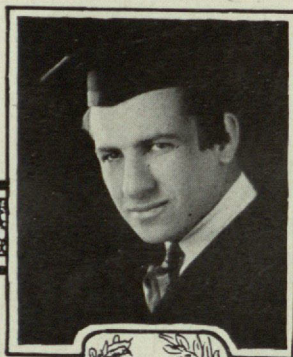
Robert L. Kidd, B. S.
"Bob"

Executive Committee, '22,
'23, '24, '25
Prospector Staff, '22, '23, '24
Executive Officer Rifle
Club, '23, '24, '25
Sec. Treas. Scientific Club,
'24, '25
Editor Flow Sheet, '25
Junior Associate, A. I. M. E.

Vice President Scientific
Club, '24, '25
Rifle Club
Basketball, '23, '24, '25
Sigma Alpha Theta

Scientific Club
Rifle Club





Rhedus Rhew, B. S.
"Cyanide"

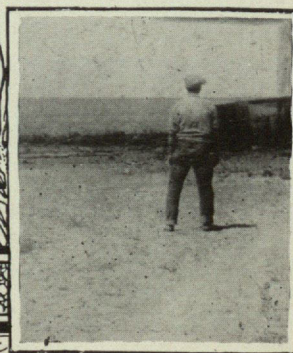
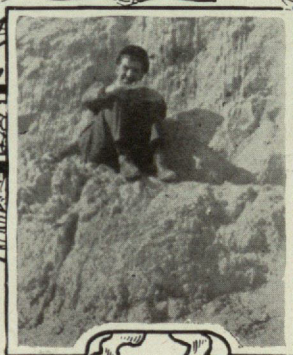
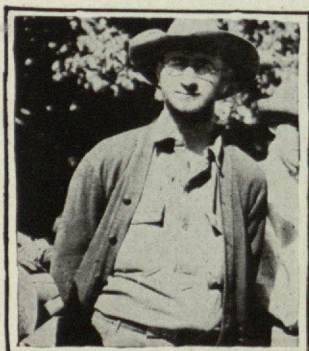
Football, '20, '22
Basketball, '19
Scientific Club
Pres. Dormitory Club, '24,
'25
"M" Club
Cap't Purity Squad, '19, '20
Rifle Club

Morris C. Scherer, B. S.
"Izzie"

Scientific Club
Junior Associate, A. I. M. E.
Rifle Club
Junior Member A. A. E.
Dormitory Club
Purity Squad

Thos J. Woodside, Jr., B. S.
"Little Tom"

Football, '21, '22, '23, '24
Captain Football, '23
Basketball Manager, '23
Executive Com., '24, '25
"M" Club
Rifle Club
Pres. Junior Class, '23-24
Sec.-Treas. Senior Class
Junior Associate, A. I. M.
M. E.
Alpha Phi Omega





THE FLOW SHEET



Dam-n

Buck's
only hold-up

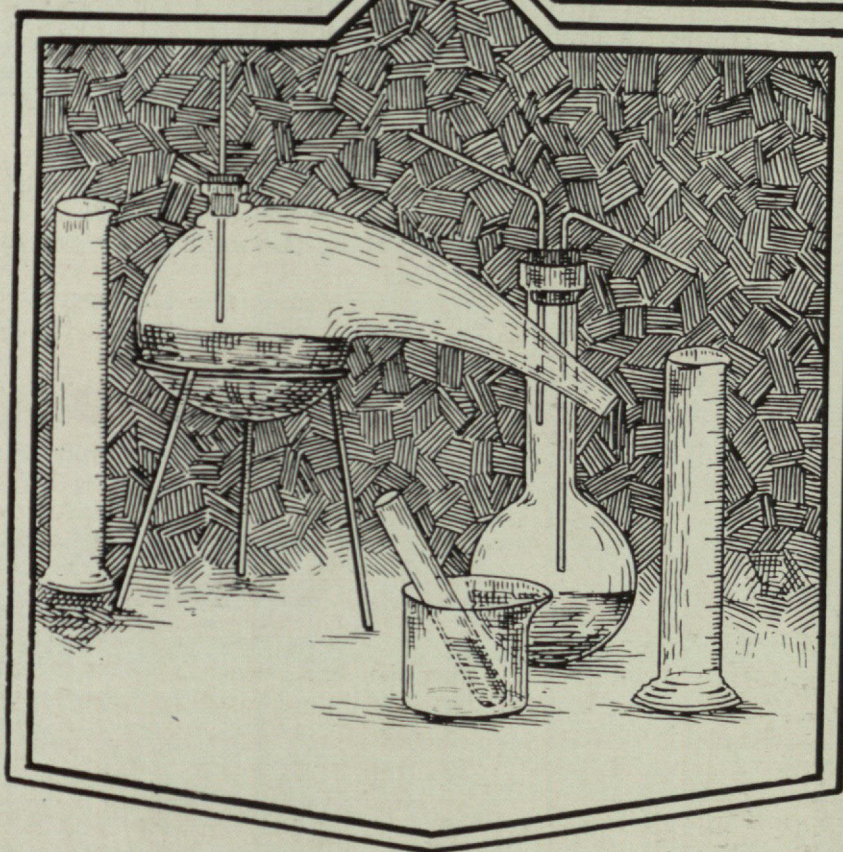
Kissin' of the
Blarney Stone





THE FLOW SHEET

JUNIORS





THE FLOW SHEET

THE CLASS OF '26

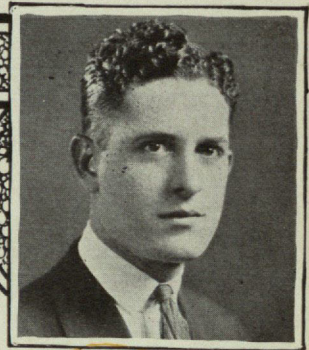
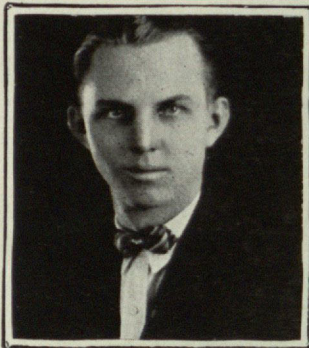
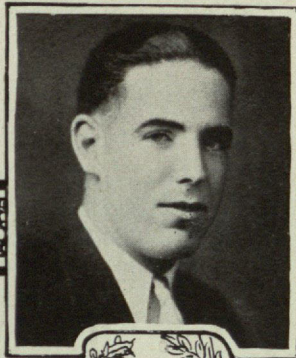
From five of the corners of Uncle Sam's nation came the five seekers of knowledge that form an aggregation far surpassing any who have gone before them even though these former ones have been Irish without a shanty, cotton choppers, jelly beans, Uvalde drawbacks, poor mechanics, Oklahoma cyclone survivors, and other riff raff, not to mention Polish patriots and cyanide sniffers with craggy features.

Little but loud, small in number, but great in intellect, ability and acquired experience are these fathomless five. These traits can best be realized when it is noted that the dizzy height at which they now rest was won only after much conscientious climbing from lowly jobs that range all the way from making blood pudding in Pennsylvania to razorback raising in the Everglades. These gentlemen belong to the class known as free thinkers and great talkers, that is, they think the worst about everyone and then proceed to talk as much as possible along those lines. They are also well versed in the ways of the world, including free love, moonlight, moonshine, wide and crooked paths, second hand cars, and the Stanton street bridge to "Wahrezz."

Due to the fact that they have already looked at themselves twice previously in this same column, Mr. Samuel Devine Hendricks and Mr. Helland Valdemar Olsen have decided to be the two dark jacks in this hand of five. We are sorry that their pleasant features don't shine forth from these pages for they are unique to say the least. Sammie D. is the thriftiest of the two and still retains the coppers he first earned when he started out doing the menial in Fo't Wu'th, while Helland Gone still shows traces of his beachcombing piratical days on the sandy and crabbed shores of wild and woolly Coppus Crusty.

Space does not permit us to sing the star spangled praises of each individual but for economy, politics, good nature, orneriness, studious ability, music and bad harmony, great Jose Cuervo capacity, conventionalities, keen lovin', credit, and everything in general and nothing in particular, they make a class all by themselves that hereby lays claim to the fur lined crockery and when the chariot goes up in the morn the class of '26 will surely be there.





THOMAS

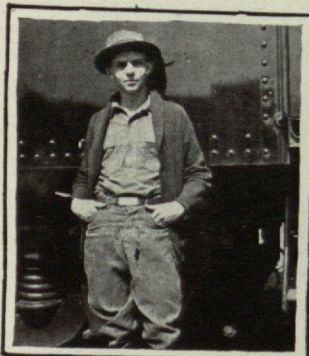
DEWITT

STOVER

A. W. O. L.

H. V. OLSEN

SAM D. HENDRICKS



F. VICTORICK



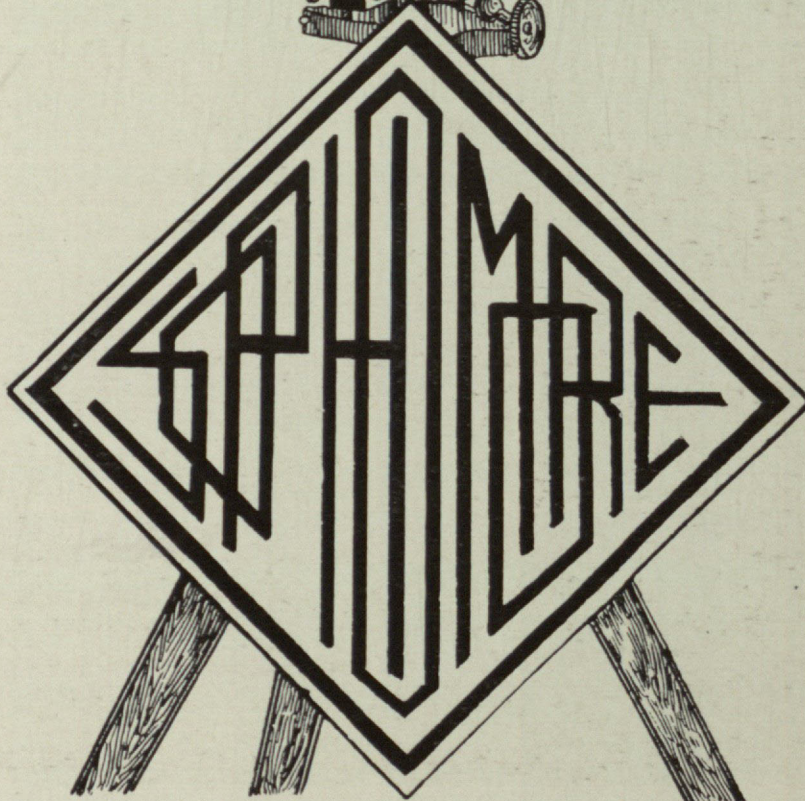
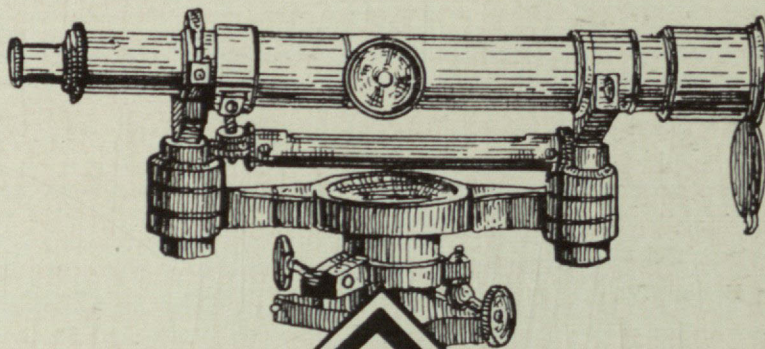


THE FLOW SHEET





THE FLOW SHEET



26

27





THE FLOW SHEET

SOPHOMORE CLASS

Josephine Morfit

Ira Bacon, Jr.

H. E. Brown, Jr.

Fred J. Whitlock

E. B. Daggett

Rex Kipp

Hugh D. McGaw

C. M. Smith

Ben Scott Smith

Oliver "Buck" Maude

Oliver Grant

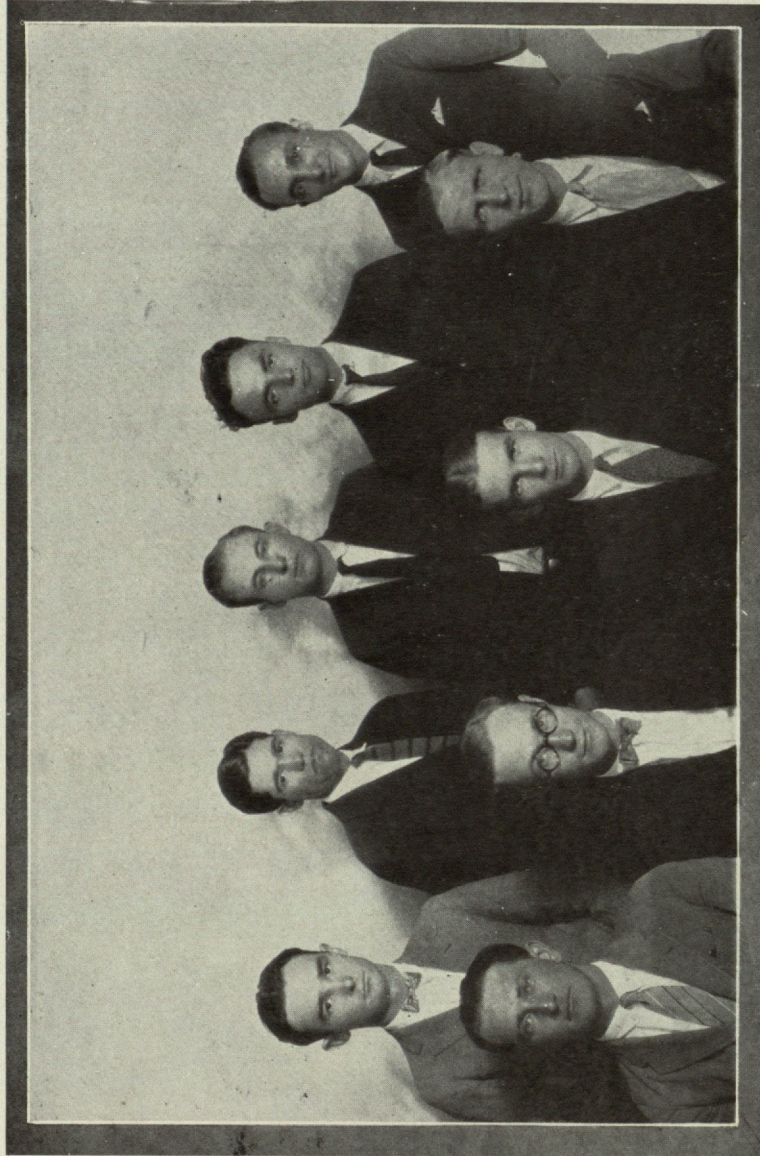
J. Leeper Gay

R. Rangel





THE FLOW SHEET

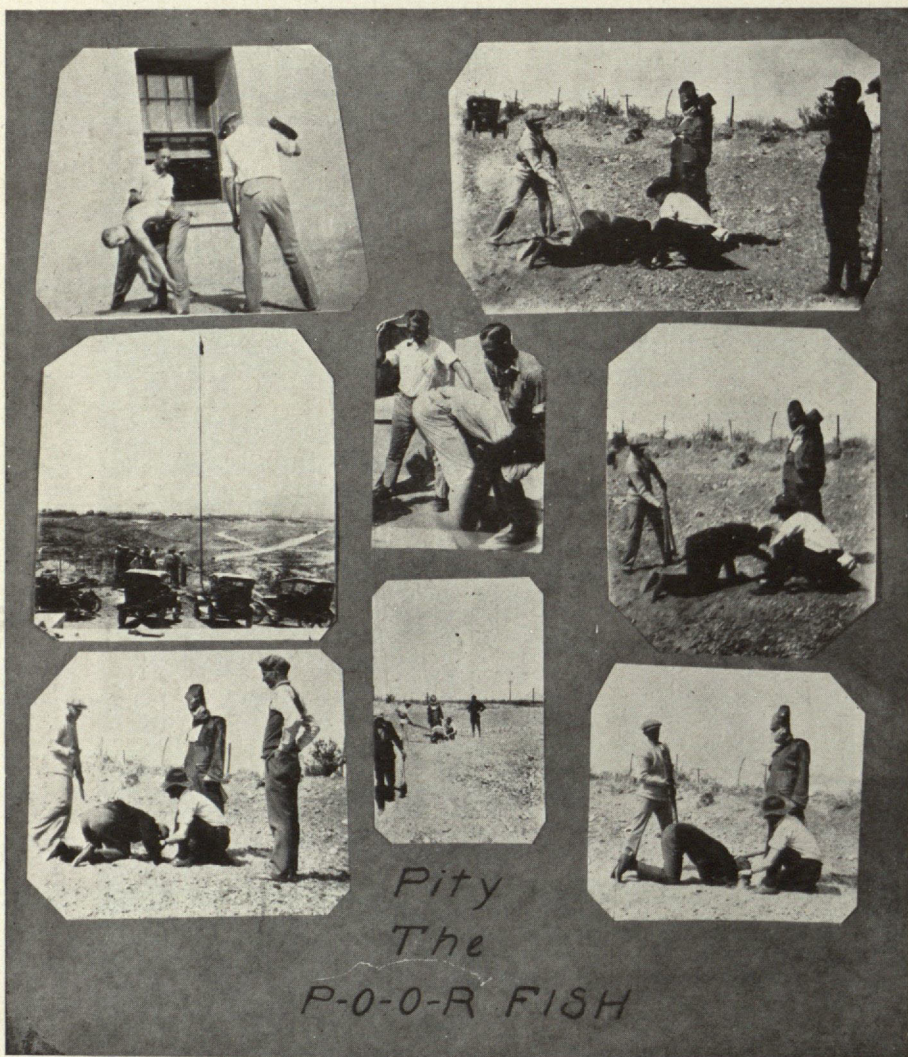


SOPHOMORES



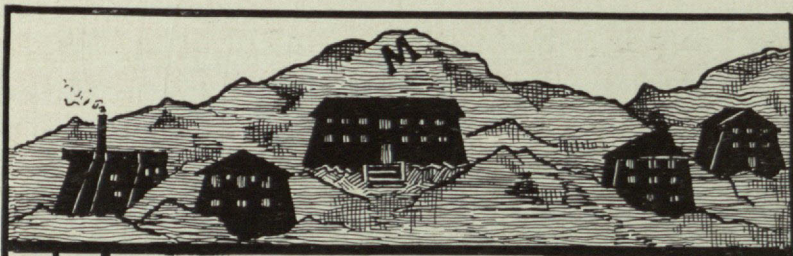


THE FLOW SHEET





THE FLOW SHEET






THE FLOW SHEET




FRESHMAN CLASS






THE FLOW SHEET

CLASS OF '28



blake, tom
bass, william louis
burbridge, wallace
cordon, joe h.
colvin, robert
caples, osmond
crosby, carrie
daehne, william
eichelberger, j. r.
edson, louise
fisher, w. h.
francis, tom
green, louis
gnauck, robert
hinden, catherine
hughes, gordon
harris, edward n.
harvey, george
irigoyen, amado
jackman, alice
knotts, margaret
long, arthur d.
lozano, carlos c.

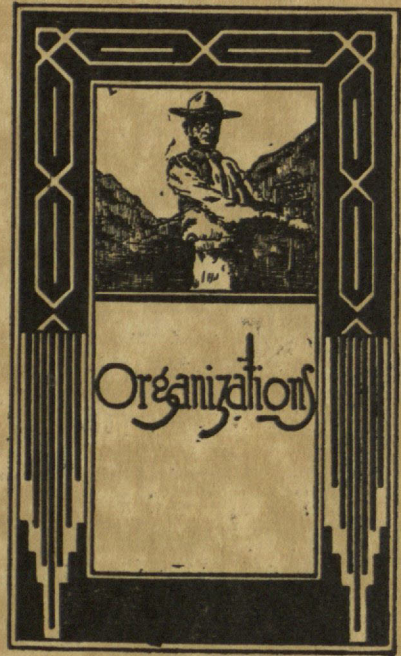
loustannau, ouanhtenoc
langston, rosaling
mcgowan, herbert
maude, lorenzo
morris, treba
odom, guy
outlaw, drew
payne, dale
patterson, raymond
placencia, richard
pettinger, helen
stansel, farrell
smith, amasa
ware, edwin
waugh, john
zlabovsky, isidore
gaston, ersken
hamilton, c. roy
kleinert, alex. l.
mone, jack
seamon, mary virginia
smith, paul
wright, juanita



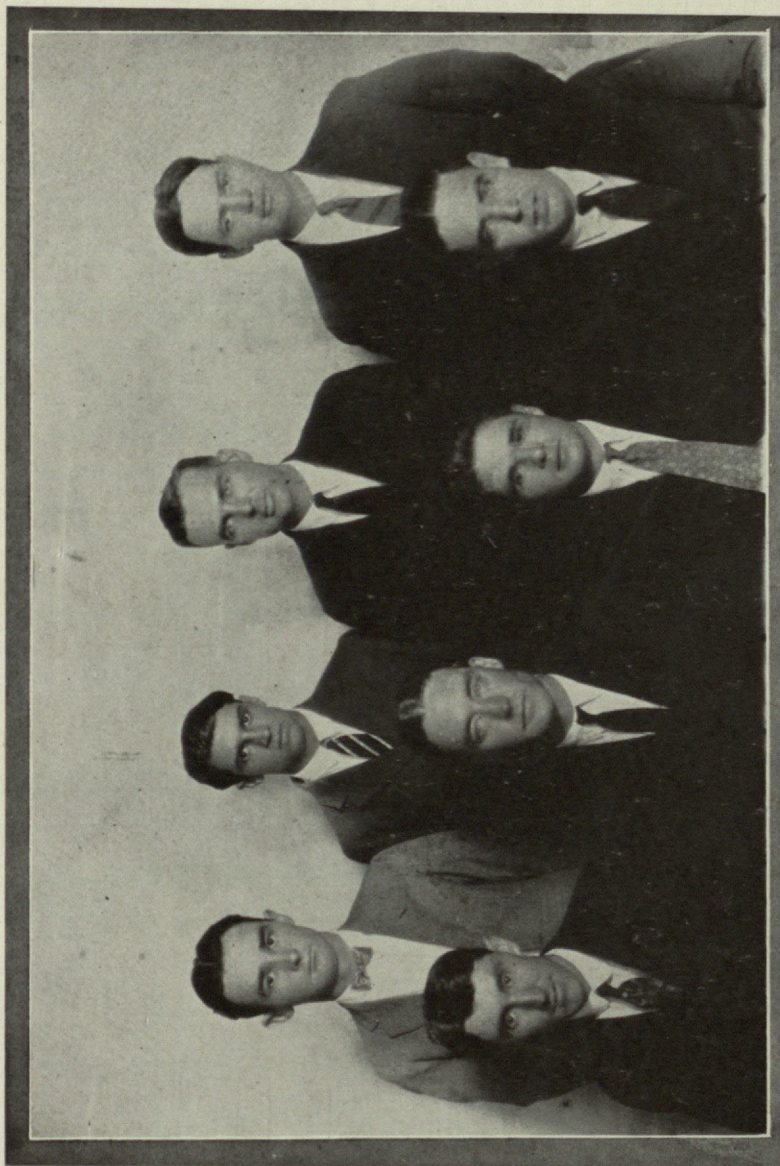


THE FLOW SHEET





THE FLOW SHEET



STUDENTS ASSOCIATION EXECUTIVE COMMITTEE

Top Row—Smith, Nelson, Sophomores; Burbridge, Secy-Treas.; Woodside, Senior.

Bottom Row—Haigh, Senior; Cooney, Pres.; Olsen, DeWitt, Juniors.



THE FLOW SHEET



DORMITORY COMMITTEE

Grant

Thomas

DeWitt

Blake

Burbridge

Cooney

McGaw

Gay






THE FLOW SHEET



SCIENTIFIC CLUB






THE FLOW SHEET

COLLEGE OF MINES RIFLE CLUB

Officers

President	Eugene M. Thomas
Vice President	J. C. Holford
Executive Officer	Bert R. Haigh
Secretary	Ed. N. Harris
Treasurer	Clarence Burbridge

 This comparatively young but very able organization was organized in October, 1923, and operates under a National Rifle Association Charter, being sponsored and furnished supplies by the United States War Department.

Permission was secured from the City to construct a range in the box canyon just northwest of the football field, and by much diligent and backbreaking work this has been accomplished.

We have some splendid shots listed in our membership, as for instance, Gordon Hughes and G. C. Odom, both of whom have been to the National Matches at Camp Perry, Ohio; Ed Harris is well known among followers of the highpowered rifle game; Bert Haigh is no slouch at being able to chalk up the "Fives" and there are a number of other members who can steer a bullet "into the black" with a regularity that is decidedly discouraging to opposing teams.



THE FLOW SHEET



SHARPSHOOTERS





THE FLOW SHEET

"M" CLUB

R. A. Patterson

D. Outlaw

B. Smith

J. A. Nix

A. Smith

O. Caples

D. C. Cooney

R. Gnauck

J. Waugh

W. Daehne

L. Green

H. Ward

Ketchersid

T. J. Woodside

H. V. Olsen

T. L. White

R. Canon

A. Evans

R. Rhew

S. D. Hendricks

T. B. Johnson

Bill Binford

Bob Binford

L. Robinson

Harry McKemy

"Chile" McKemy

"Ya" McKemy

G. Ragsdale

T. H. Haynie

C. Pollock

B. Finch

Jensen

J. McCormick

B. C. Morgan

J. C. Holford

O. H. Maude

J. Nelson

H. Bown

Jack Light

B. L. Coffey

J. Vowell

G. Magruder

Russell Worthington

"Cap" Kidd

Mr. Binford

Tommy Dwyer





THE FLOW SHEET



THE "M" CLUB





THE FLOW SHEET

OMEGA PHI DELTA

Helen Pettinger

Rosalind Langston

Carrie Crosby

Margaret Knotts

Katherine Hinden

Josephine Morfit

Tama O'Keefe

Lilian Wisbrun

Louise Edson





THE FLOW SHEET



OMEGA PHI DELTA





THE FLOW SHEET

IN UNIVERSITY

1925

Carl Temple
Goodwin Ragsdale
T. J. Woodside, Jr.

1926

Eugene Thomas
Rex Kipp

1927

E. B. Daggett
C. M. Smith
Ben Scott Smith
Ira Bacon, Jr.
Scott Skidmore
Fred Whitlock

1928

Edward Harris
Robert Colvin
Gordon Hughes

FRATRES ALUMNI

R. W. Tighe
E. C. Lytle
R. L. Mullin
K. C. Hamilton
H. C. Vacher
F. Dale
Lewis Robinson
O. C. Campbell
John Savage
C. D. Fletcher
J. F. Bennett, Jr.

T. A. Doxey
T. Clements
W. E. Dickinson
A. C. Wheatley
J. E. Crenshaw
Ben Howell
C. A. Skidmore
A. E. Millar
G. M. Smith
Milton Towner
Reed Winterburn






THE FLOW SHEET



ALPHA PHI OMEGA





THE FLOW SHEET

THE SPONSORS CLUB

Last year it was said that the most important thing that happened to the College during the year was the organization of the Sponsors Club. This year we have seen, more even than last, the truth of this statement. The organization was modeled after the plan of that at Vanderbilt University and with the sole purpose and intention of putting the College of Mines on the map, by promoting and assisting all college activities and athletics, and by trying to make the campus more like it should be.

This year the Sponsors started out the season helping to sell football tickets and after having done their bit with that, immediately began to look about for something else to be done. It wasn't long until they discovered that on the first floor of Kelly Hall the contractor had left a very large room, intended to be a recreation and lounging room for students living in the dormitories. Until this time the room was furnished with a dozen or so big lounging chairs and nothing else, so the Sponsors went to work. They secured curtains, magazines, books, tables and chairs, and, above all, a piano, rugs and a floor lamp.

Kelly Hall now boasts of having a lobby and recreation room surpassed by none. The Scientific Club holds its meetings there, and the room serves as a meeting place for all students.

The Sponsors Club plans to give a benefit dance, sometime along toward the end of the year, to help the Athletic Association, which is sorely in need of assistance.

Miss Nell Pollard and Mrs. James A. Pickett have especially interested themselves in the College of Mines and its students and have done wonderful things toward the improvement of the campus. The entire Student Body, and the dormitory men especially, owe them a debt of gratitude.

Mrs. F. H. Seamon has been very active in everything pertaining to student activities, and to her also we wish to express our thanks.

The officers of the Club for the present year are: Mrs. A. P. Coles, president; Mrs. Robert W. McAfee, first vice-president; Miss Nell Pollard, second vice-president; Mrs. J. F. Williams, third vice-president; Mrs. Maurice Schwartz, treasurer, and Mrs. James A. Pickett, secretary. With the officers the following constitute the board of directors: Mesdames Will T. Owen, C. E. Kelly, John W. Kidd, W. R. Brown, B. F. Farrar, Kuno Doerr and Frank H. Seamon.

The College and the Club are most fortunate in having Mrs. Coles as the president for with her great interest in the school and her efficient leadership and executive ability she is eminently qualified to fill the position.



THE FLOW SHEET



SPONSORS CLUB

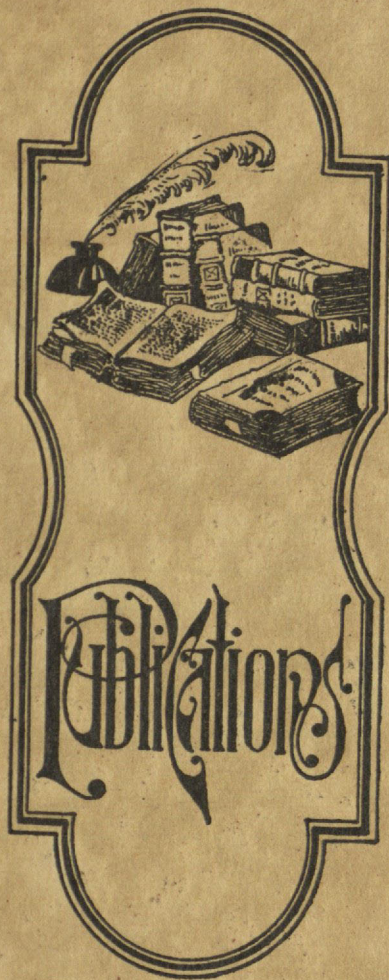


THE FLOW SHEET



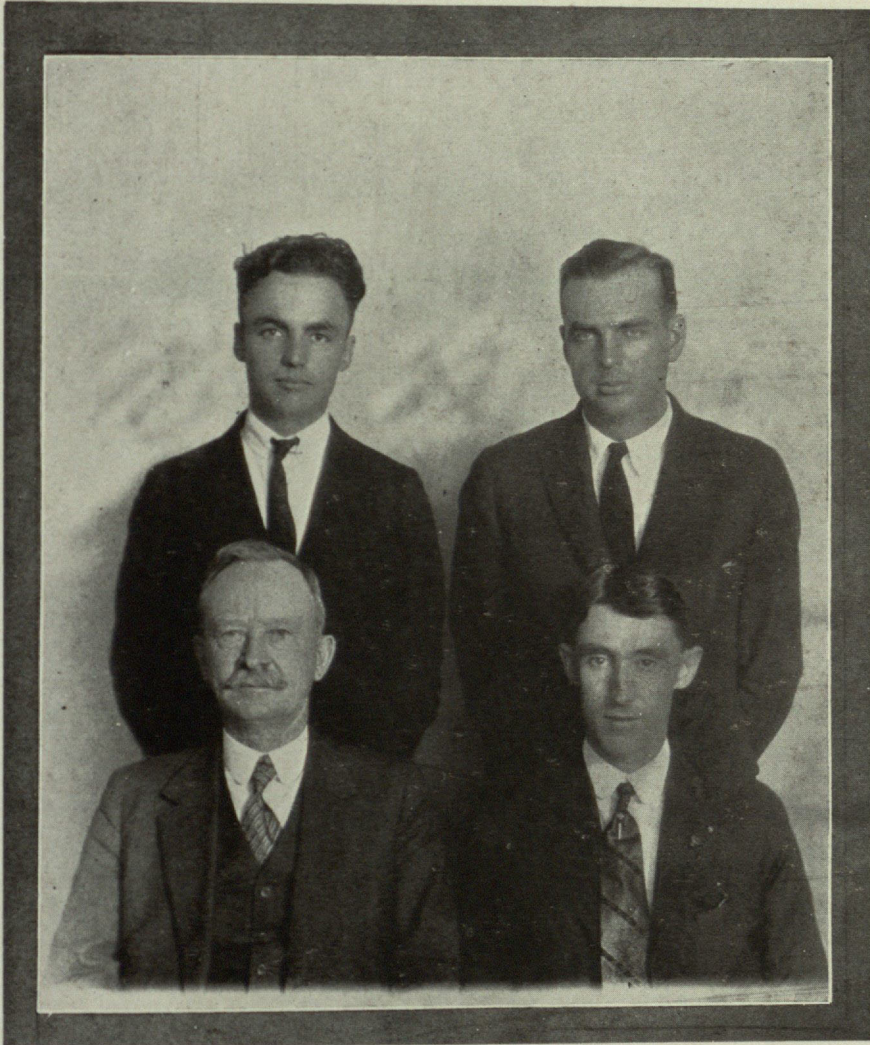
LATIN AMERICAN CLUB

H. Aimes	Camacho	Placencia
C. T. Loustannau	Irigoyen	Madrid





THE FLOW SHEET



FLOW SHEET STAFF

Top Row—Fred J. Whitlock, Business Manager
C. E. Burbridge, Jr., Asst. Business Manager
Bottom Row—Prof. Emmet A. Drake, Faculty Advisor
Berte R. Haigh, Editor





THE FLOW SHEET



PROSPECTOR STAFF

Top Row—E. B. Daggett, Associate Editor
J. Leper Gay, Business Manager

Bottom Row—Prof. Emmet A. Drake, Faculty Advisor
D. C. DeWitt, Editor

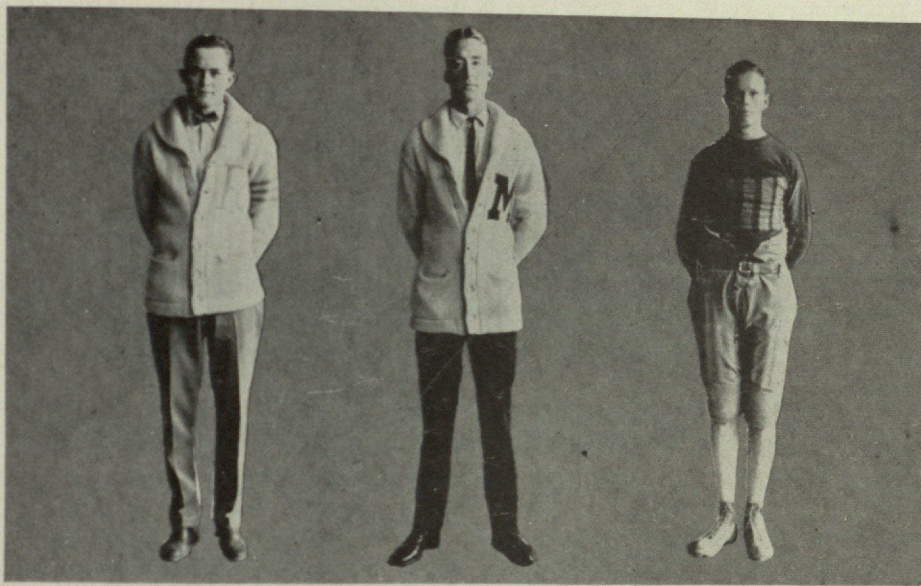


ATHLETICS





THE FLOW SHEET



POWELL (COACH)

George B. Powell came to the College of Mines from Rice Institute, where he played four years of football before graduating.

With two years coaching experience behind him, he took over the greenest and most ramshackle team the Mines has ever been confronted with, and produced the best squad that has worn the Orange and White of the Mines in many years.

COONEY (STUDENT MANAGER)

Dan Cooney, this year's "Student" Manager, performed in this capacity, as he has in all other school activities, to the best of his ability. It was a difficult task, but Dan did it, and did it well; often looking after the interests of the team and the school to the detriment of his own. Dan will truly be missed at Mines next year. We wish him well.

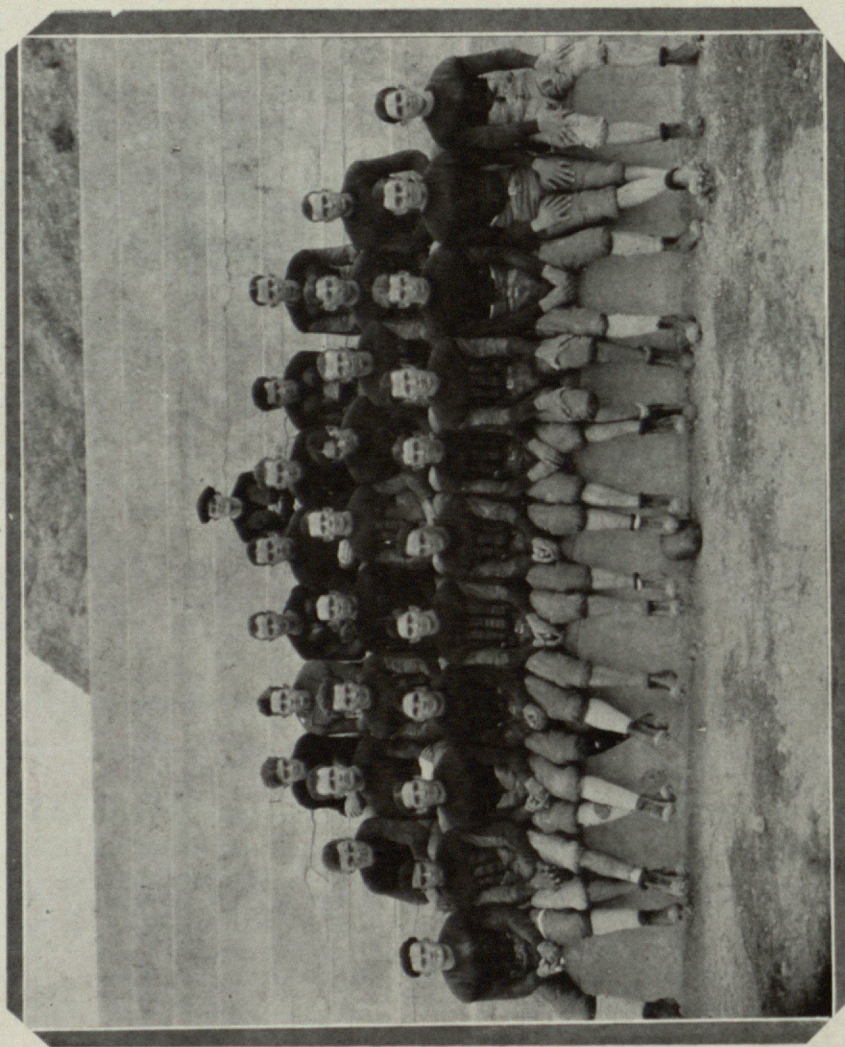
HAYNIE (CAPTAIN)

Hank's third year with the Mines proved that those who prophesied great things for him were right in their estimation. Haynie has proved himself a good backfield man and we are sorry that he does not expect to return next year.





THE FLOW SHEET



THE SQUAD





THE FLOW SHEET

FOOTBALL COMMENT

The most successful season in the history of the College of Mines was the verdict of those who follow athletics in the Southwest.

We put this season across with a brand new coach. George B. Powell came to the College of Mines from Rice Institute and faced the difficult task of starting a new season in a strange place with a squad that was "plumb green." Only three or four of the men had ever played together or at Mines before, the rest of them coming from High schools and having to be made over to play a very different brand of football. It was a Herculean task but "George did it." The general impression at the beginning of school was that we were not going to have very much of a chance in football. But as the season advanced and the squad was moulded into shape things began to "look up" and Mines surprised the entire Southwest with the most successful team we have had in years.

The most outstanding star of the season was Johnnie Waugh. His playing was brilliant and consistent and his gains steady. He was unanimously elected All-Southwestern Half.

In Daehne, half, and Amasa Smith, guard, we have promise of two bright-shining stars. Haynie, Captain, in spite of an injured arm, played a steady game all through the season.

Green, at times, played a beautiful game. If he will steady down next year he will make an "honest to gosh" end.

The whole squad gave the school the best that in them, and it is to the squad *as a whole* that praise is due for a season which left a tally:—three games won, two games lost, and one a tie.

A great deal of appreciation is due Prof. F. H. Seamon, whose efforts on athletic finances were responsible for the financial success of the season.





THE FLOW SHEET

FOOTBALL HISTORY

Sul Ross, at El Paso	Mines 30—Sul Ross 6
New Mexico University, at Albuquerque	Mines 0—New Mexico 18
New Mexico Military Institute, at Roswell	Mines 6—Institute 6
New Mexico Aggies, at El Paso	Mines 0—Aggies 19
El Paso Junior College, at El Paso	Mines 26—College 0
Wayland College, at El Paso	Mines 6—Wayland 2

Sul Ross Normal invaded El Paso for the Miners' first game of the season. During a hard-fought hour of playing, the first half of which ended 6-6, the Miners showed that they were a fighting crew and the longer the game went the harder they played, finally overpowering the Alpiners and sending them home on the short end of the score but with plenty of praise for their gameness. The game was featured by Green's run for a touchdown from kickoff and for steady and brilliant playing by Waugh and Capt. Haynie. Townsend, for Sul Ross, did some excellent work.

The second game, the following week, with New Mexico U at Albuquerque sent the Miners home defeated but hopeful for the future games. The Miners took the offensive early in the game and by steady driving on the part of Waugh and Haynie brought the ball within the opponents' ten yard line twice but somehow lacked the power to put it across. In the second half the tables were completely turned and the Lobos over-ran the Miners, taking the victory by an 18-0 score.

Next week the boys were again away from home, journeying to Roswell to tackle the New Mexico Military Institute. Here the Miners fared better and after assuming the offensive the entire game against the South-





THE FLOW SHEET

west Champions they were only scored against in the last quarter, the game ending in a 6-6 tie.

The next game on our schedule was with the New Mexico Aggies on our own home grounds. The Aggies outplayed the Miners and got away with the long end of a 19-0 tally. The Miners, at that, gave them some stiff competition throughout the entire game, twice carrying the ball within Aggies' ten yard line, only to be held for downs. Moore played the best game for the Miners, while Miller, Boone, Wesley and Hines were the shining lights among the Farmers.

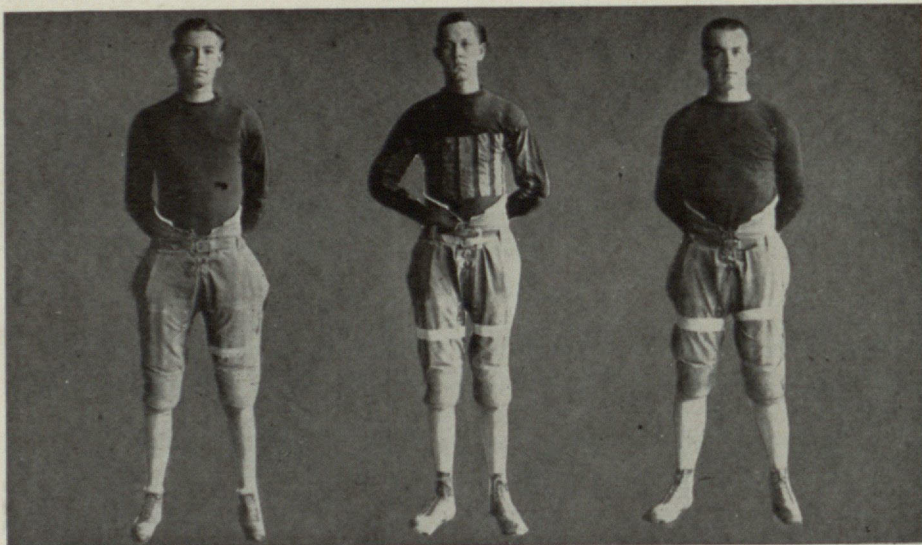
The following week Miners easily defeated the El Paso Junior College Panthers to the tune of 26-0. The Miners played poor and ragged football throughout the game, it being their one bad exhibition of the season, but at that they gave their opponents only three first downs. Miller, the Panther fullback, was the only opponent to give the Miners any worry.

The final game of the season was as good a game of football as has been seen in El Paso in some time. It was slam-bang, tug and tussle all the way and gave those who came to see it a most pleasant time in which to digest their Thanksgiving Turkey. The Jackrabbits came down from Plainview loaded for bear and from the first whistle did their best to capture said Bruin. During the first quarter they held the ball inside the Miners' twenty yard line the entire time. They could not get it past the posts however, and as the game progressed the Muckers got their offensive into action and scored a touchdown, taking a lead which they held to the end. The final gun found the ball in midfield and the Miners chalking up a great large SIX against Wayland's TWO. Haynie was really the outstanding Miner in this game, while Daniels was the man around whom the Wayland aggregation built their team and he proved to be a tower of strength both on offensive and defensive.





THE FLOW SHEET



NIX

Art is another new man who proved himself to be made of the proper stuff. His favorite sport was "piling 'em up" and he did it well. At the Guard position he will be a valuable man in next year's line-up.

MOORE

Another Jack who, though he could not stay with us long, sure was noticed while he was here. He did his duty as an end and did it well. It is to be hoped for that he will be back with Mines next year.

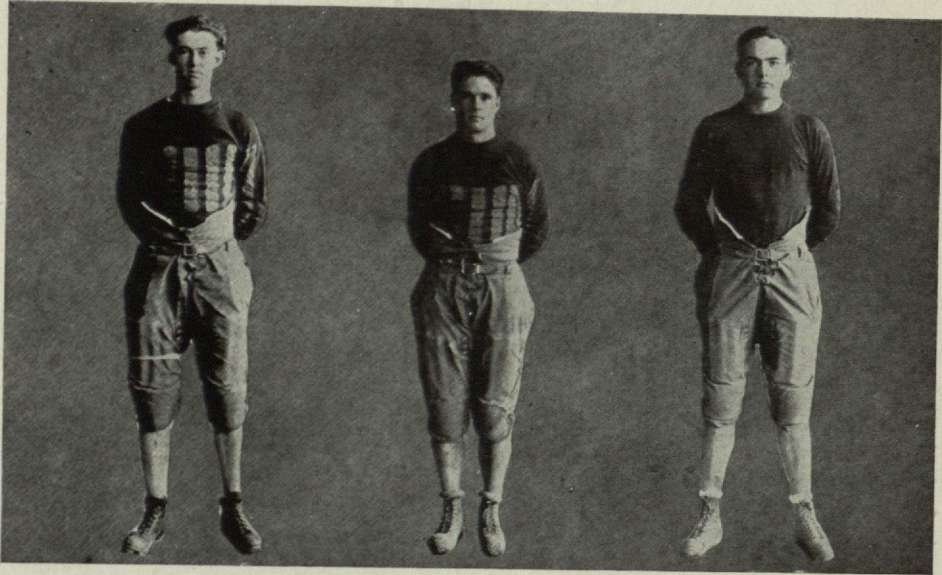
GREEN

One of the snappiest ends we have ever had. He only needs the steady-ing of another season to make one of the greatest ends in the Southwest.





THE FLOW SHEET



SMITH, BEN

Ben's second year at Mines. He has shown himself a nervy and a brainy little "quarter." If he keeps on improving as he did thru the past season he should be one of the best assets to next year's squad.

OLSEN

"Swede" Olsen's fighting spirit is known and respected by everyone who has seen him play. He never failed to put his whole heart into the game and is one of the fastest men on the squad. Mines is indeed lucky to have him back next year.

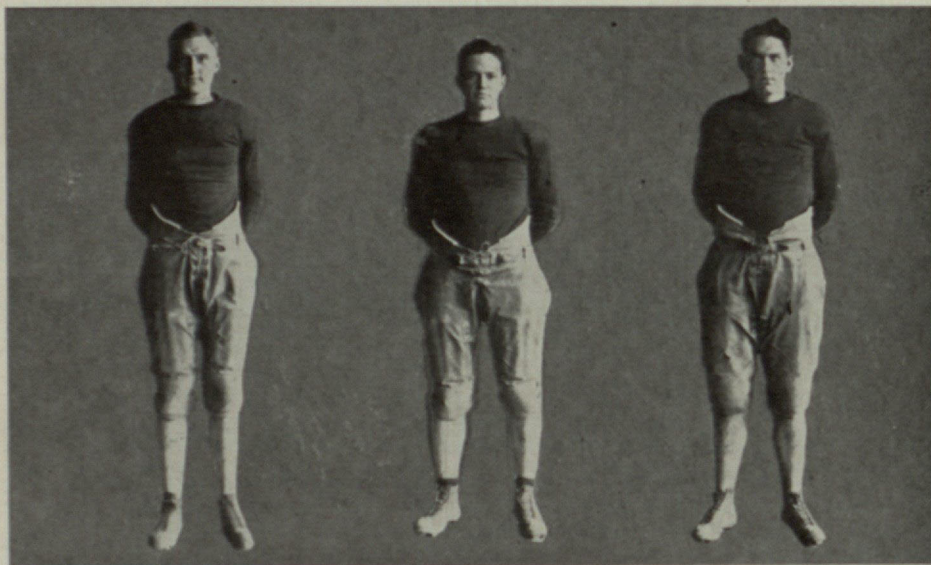
SMITH, AMASA

"Mesa" has the makings of an All-Southwestern Guard. He played his first season with the Mines this year and could always be expected to hold his man or make a hole when necessary. We will be mighty glad to see him back next year.





THE FLOW SHEET



GNAUCK

"Nukee" played a good game at guard. He was so big it took two men to move him and he could always be counted on to do his part.

WOODSIDE

"Little" Tom has shown himself, thru four years of hard football, to be one of the greatest and gamest line-men ever developed at Mines. He never admitted defeat during a game and seemed to play even better when the breaks were against us. Tom was 1923 Captain. He graduates this year, and thru his going Mines loses a mighty good man.

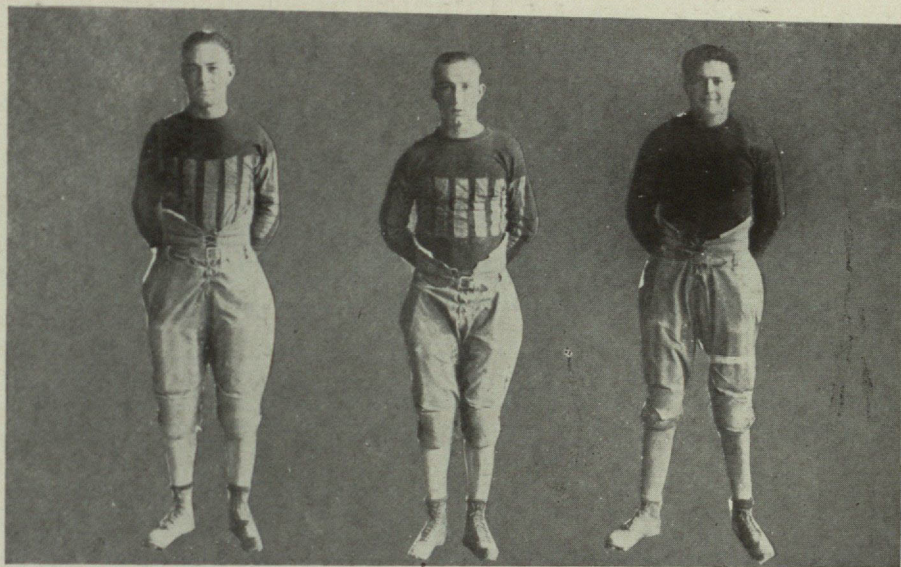
EVANS

"Amos"—he took more punishment than any other man on the squad. Playing at the center post he had no relief and played throughout every game of the season. After three years on the squad the Mines loses him thru graduation.





THE FLOW SHEET



KLEINART

Another freshman who showed rare ability, and it was a loss to the College that he had to leave us at mid-term.

DAEHNE

Came to us from South Texas and played his first year with Mines. He is one of the fastest backfield men the School has ever had, and as he has three years ahead of him here he is expected to show great form.

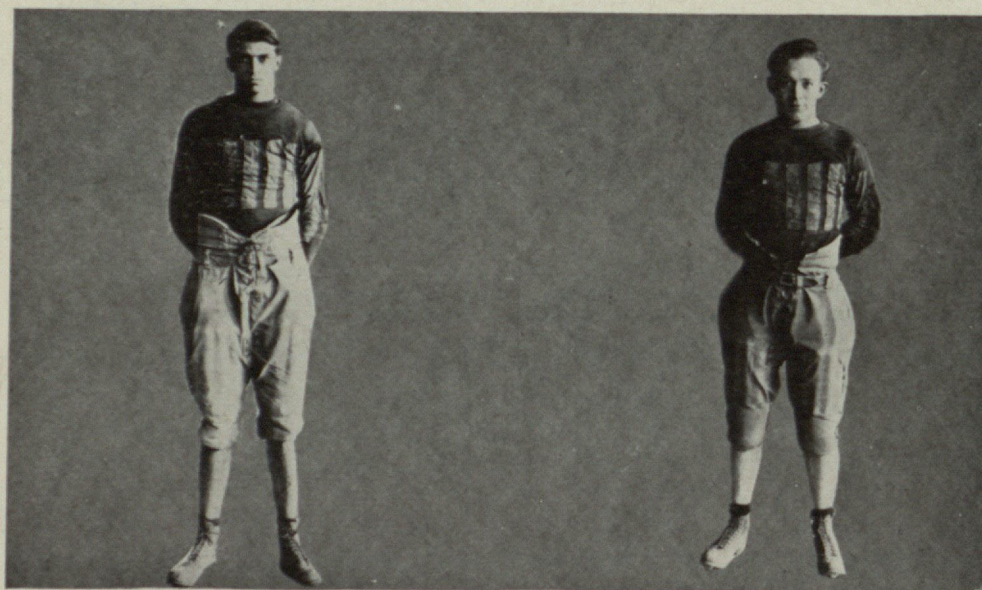
CAPLES

"Ozzy" showed up as one of the scrappiest guards that we have ever seen and we are glad that he will be back.





THE FLOW SHEET



NELSON

Jack has played three years of good hard football, putting everything he had into the game. We are truly glad that he will be with us again next year.

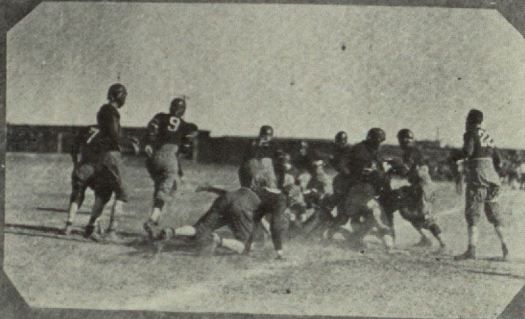
"SMILING" JOHNNIE WAUGH

All Southwestern half for the season of '24. Nothing equal to Johnnie has ever been seen in these parts. The more he would smile, the more yards he would gain. He was elected Captain of the 1925 squad and great things are expected of him during the coming year.





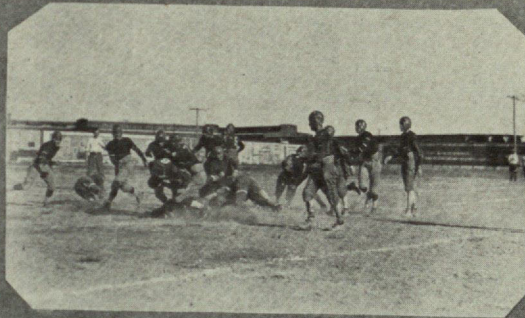
THE FLOW SHEET



DOWN THEIR STUFF

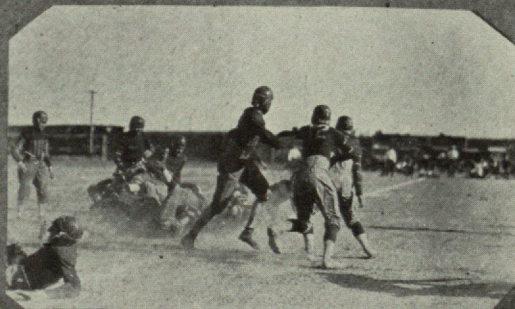


Coach Chuck



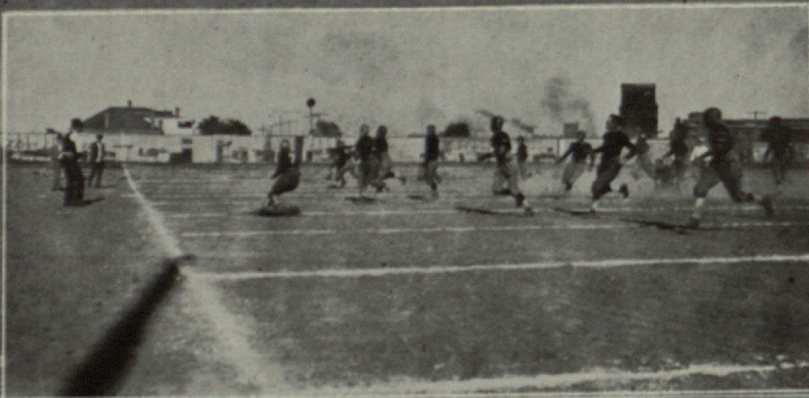
Captain Hank

SEASON '24-'25





THE FLOW SHEET

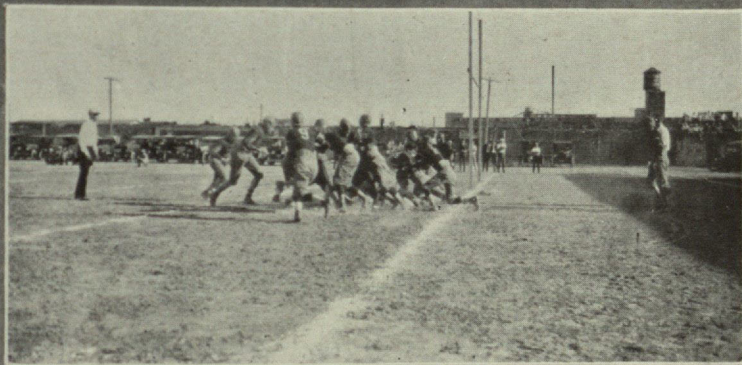
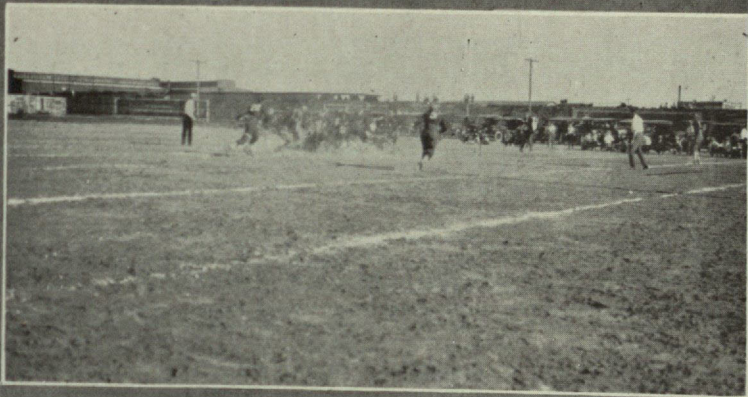


Action



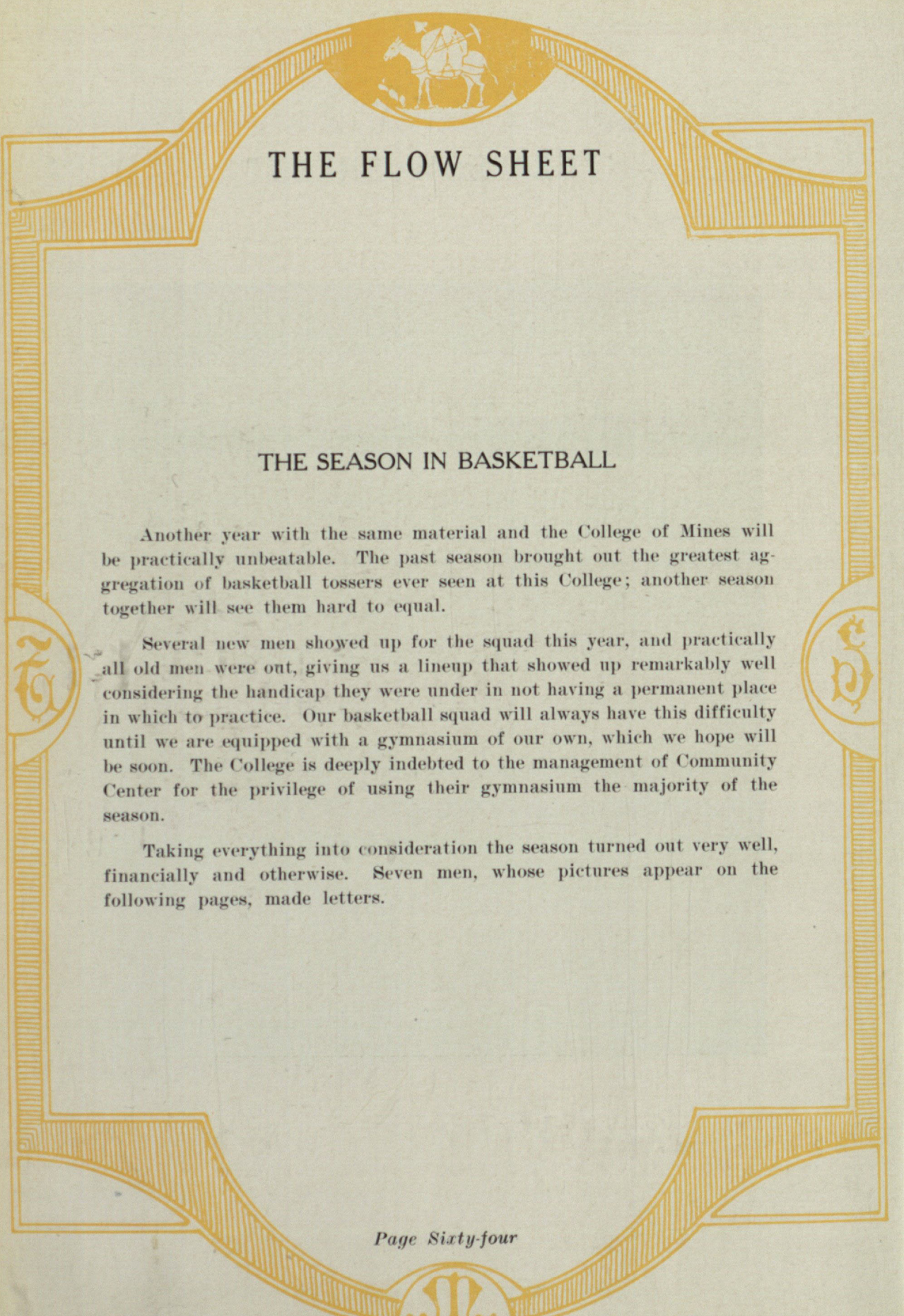


THE FLOW SHEET



AND REACTION





THE FLOW SHEET

THE SEASON IN BASKETBALL

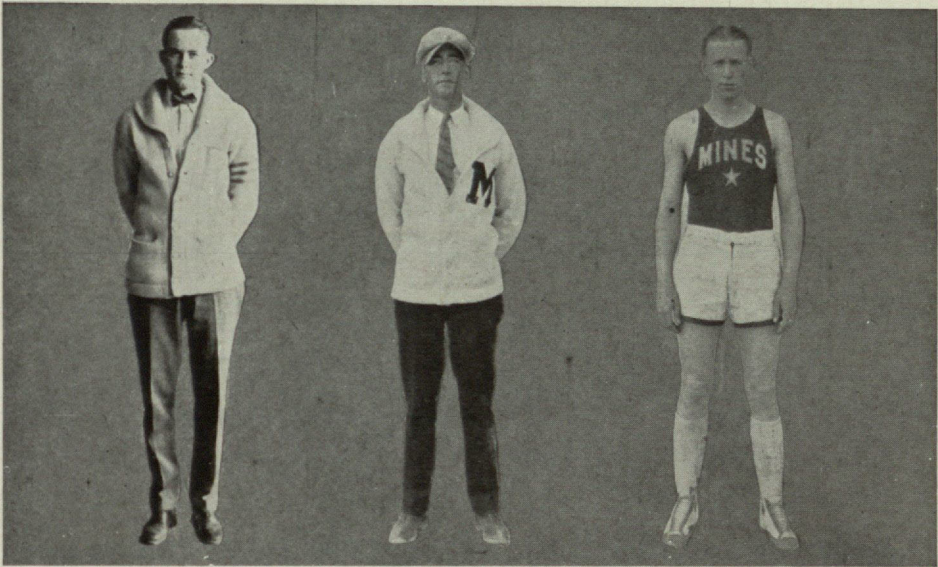
Another year with the same material and the College of Mines will be practically unbeatable. The past season brought out the greatest aggregation of basketball tossers ever seen at this College; another season together will see them hard to equal.

Several new men showed up for the squad this year, and practically all old men were out, giving us a lineup that showed up remarkably well considering the handicap they were under in not having a permanent place in which to practice. Our basketball squad will always have this difficulty until we are equipped with a gymnasium of our own, which we hope will be soon. The College is deeply indebted to the management of Community Center for the privilege of using their gymnasium the majority of the season.

Taking everything into consideration the season turned out very well, financially and otherwise. Seven men, whose pictures appear on the following pages, made letters.



THE FLOW SHEET



Coach
GEO. B. POWELL

Manager
DAN C. COONEY

Captain
"BUCK" MAUDE

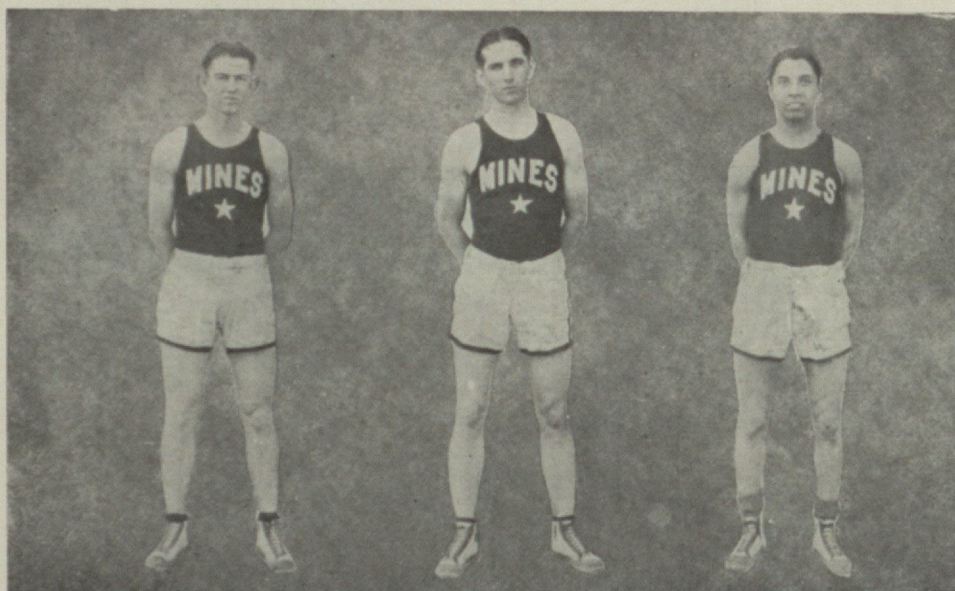
MAUDE

As Captain, Maude led the Mines successfully thru the hardest season the team has experienced.





THE FLOW SHEET



SMITH

Ben will be back to go thru another season. His playing at forward this year was exceptionally good.

HOLFORD

This was J. C.'s third year with the Mines and his performance was fully equal to that of former years.

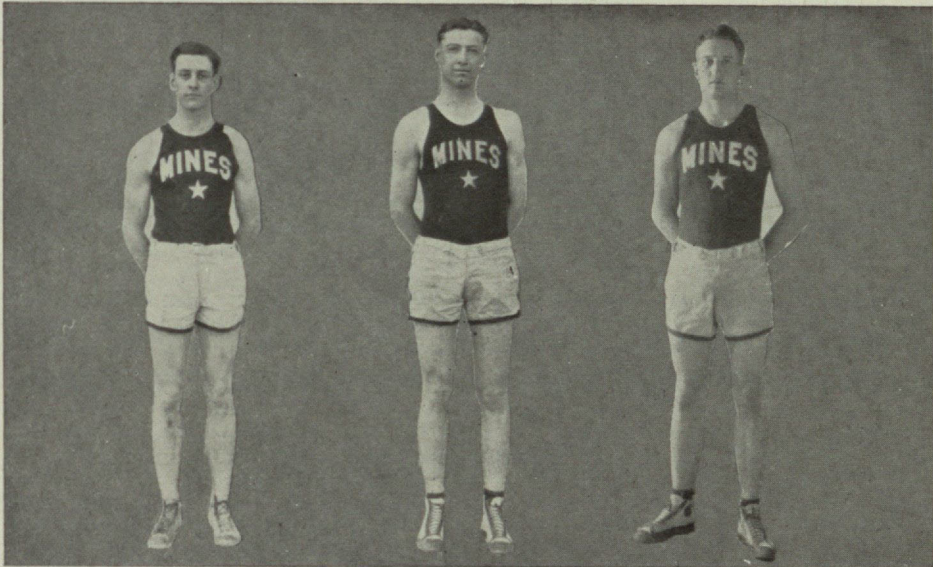
LOZANO

Played a flashy game all thru the season. His baskets made from the center of the floor were wonders of accuracy.





THE FLOW SHEET



PATTERSON

Pat's first year with the Miners promises much for the next three years. He is an extremely fast forward.

NIX

Art is a lanky center who doesn't wake up until he gets on a basketball floor, then he's wide awake.

OUTLAW

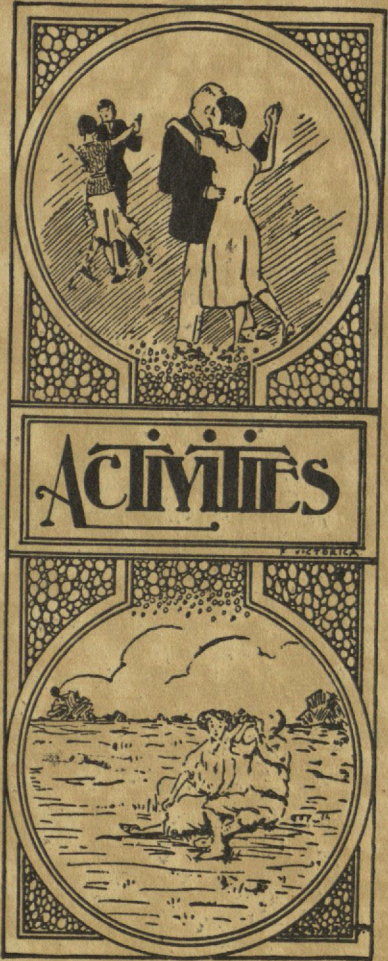
Another forward who played his first year with the Mines. It is to be hoped that he will be back next year to continue his good work.





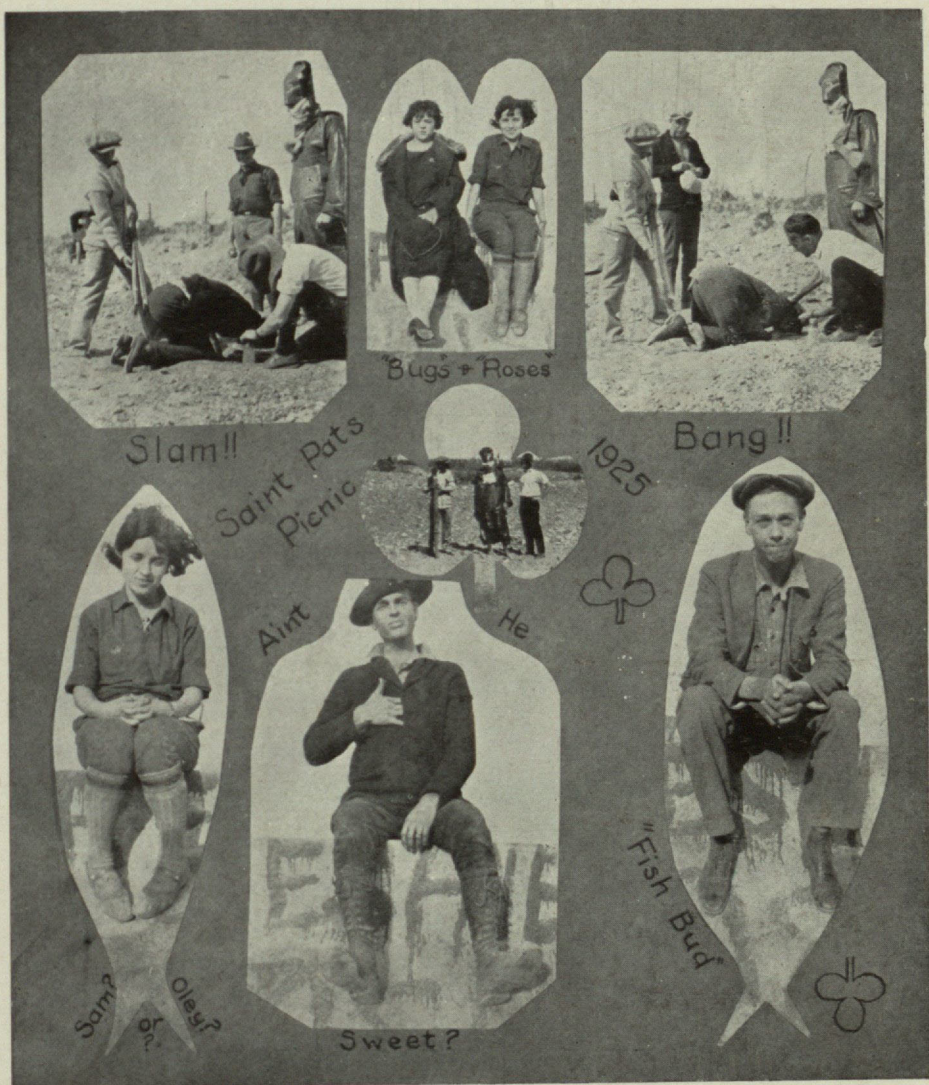
THE FLOW SHEET







THE FLOW SHEET





THE FLOW SHEET



The Car

The Gang

*Two Best
Fellows
Ever Met*

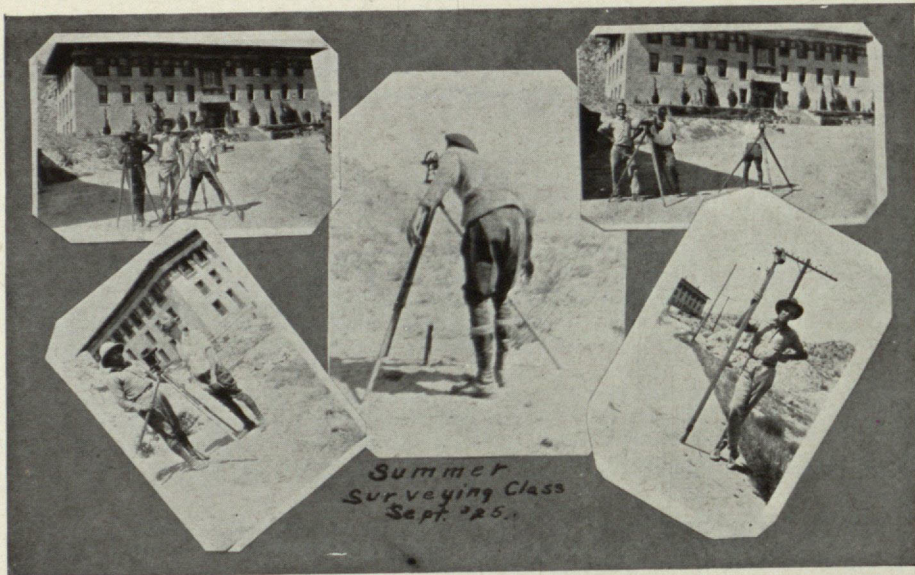
MINE RESCUE CLASS

Instruction Car No. 2
U. S. Department of Interior
Bureau of Mines

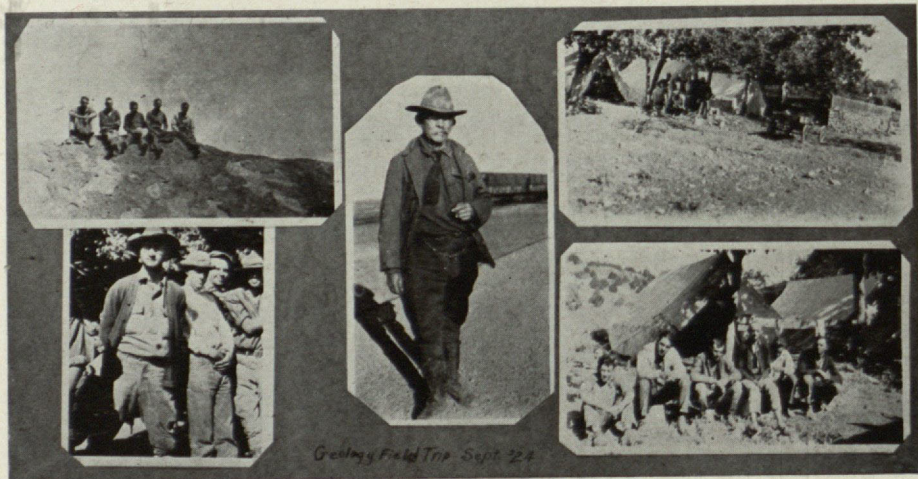




THE FLOW SHEET



*Summer
Surveying Class
Sept. 25.*

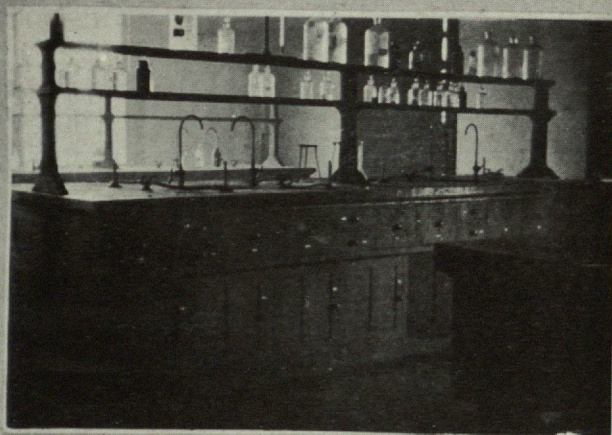


Geology Field Trip Sept. 24

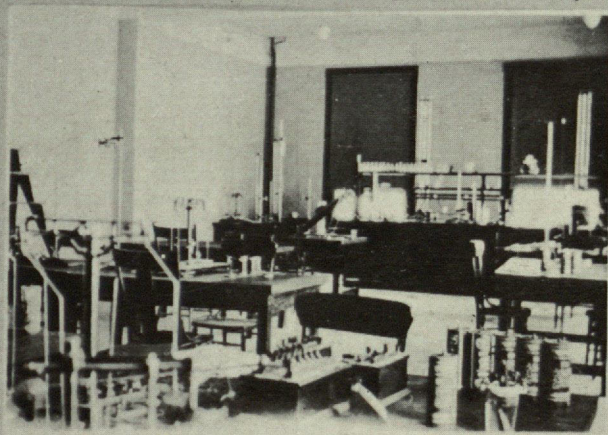




THE FLOW SHEET



Freshman Chemistry Laboratory



Corner Physics Laboratory

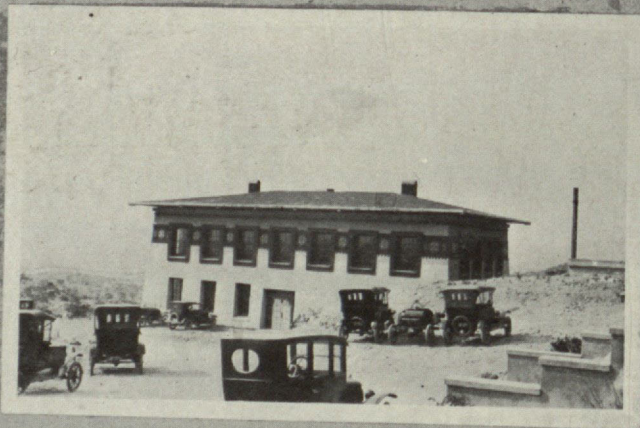




THE FLOW SHEET



Main Building from Campus

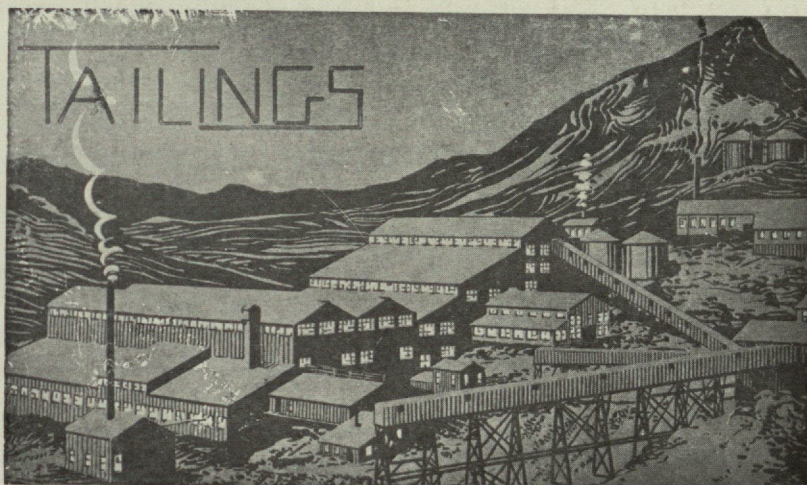


Chemistry Building





THE FLOW SHEET





THE FLOW SHEET

THROWBACKS

Every College has 'em

"Have you a cigarette?" Thus does the habitual bumner genially inquire. We are heartily in favor of giving Mr. Ware one filled with Lida Pinkham's pink tea pills.

It's a pleasure for this fellow Gnauck to fill as many chairs as possible. He follows the lines of least resistance for which we give him credit for being happy but unquestionably dumb.

How people stare at Rhedus Rhew when he goes out of the College district. They are used to freaks, but

not like this. "Really," says Marjorie, "isn't he just too cute."

Jack Nelson is so clean and nice and a great reader, but hardly ever buys anything he reads, as he prefers just to look at them, then tells everyone of his reading. Oh, he's an ill literary genius.

We have it from a reliable source that all of the fair sex of the city are ghastly afraid of Mr. DeWitt. Seems to be a lot of scandal about him. If there is we can truthfully say it is well grounded as we are personally acquainted with the large man in question.

MUCKERS YOU SHOULD KNOW

Ira Bacon, Jr.

Something of a fellow in a gymnasium. Ira's back with the muscles and all, resembles greatly a pan of new baked biscuits. Gossip has it that he is more the man than the scholar.

Mr. Oliver Buck Maude

A room-mate of Olie's and already grimy about the nails and gray with cigar ashes. Personal appearance

is of no consequence, for *women, you know, don't judge men by their looks.*

Mr. Hugh D. McGaw

Mr. McGaw came to the campus from the wild and woolly west, Nebraska in fact. College tailors, masseurs, and a Ford coupe made him what he is. He dances well (after the fashion of the moderns) and has boiled ballroom conversation to his essence.





THE FLOW SHEET

MIMEOGRAMS

On windy days your happiness depends on your eyesight.

If all else fails, don't get down-hearted as there is always one chance left—you can always be a bum—ask Scherer.

No power on earth can keep a Miner from drinking if he can get it.

When you leave the campus remember you're a Miner and act accordingly.

It is hard to earn a reputation, remember ours and live up to it. You, too, Georgie dear.

There must be a motive power in your life—see that she is a good one.

When out with a Feminine always remember the School emblem and act accordingly. It pays sometimes.

The energy expended by the Fish drawing class over a period of 90

days if intelligently directed, would be sufficient to construct one sardine can, less key.

The hot air wasted by Cooney, if capable of salvage (and thank Gawd it aint) would inflate the dirigible Shenandoah and leave sufficient excess to temper the valley of that name throughout the entire winter.

Birds of a feather get pretty cold these days.

People who live in glass houses are called florists.

Don't cross a bridge unless you want on the other side.

Never hit a man when he is down; kick him.

People who *know* their oats usually reap a big harvest,

The best place to hold the World's Fair is around the waist.





THE FLOW SHEET

Personally we don't take much stock in it, but it's being rumored that the Siamese twins aren't sisters.

* * *

Billy, looking down the gun,
Pulls the trigger, just for fun,
Mother says in accents pained,
"William is so scatter brained."

* * *

Dan: Lend me a sheet of paper,
will you?

John Arthur: Chure!

Dan: Gonna use your pen?

J. A.: Naw, here it is.

Dan: Gotta stamp?

J. A.: In that book there.

Dan: By the way, Art, what's
your Sheba's address?

* * *

Buck: How dija know I'm not
playing honest?

Ole: 'Cause I know the cards I
dealt you.

* * *

Imagine one of our hops if a week
before all the razors and cosmetics
suddenly disappeared from the earth.

* * *

Wife (excitedly): Help, Jack,
help! Mother has been struck by
lightning!

Hubby: *Good God!*

* * *

It is told that one day when
Scherer was at home he was forced

to catch cold by standing in a nasty
rain, just because a salesman left
a sample package of cough drops.

* * *

Dan, absentmindedly, at dentist's
office: "Cleaned and pressed,
please."

* * *

Louise: It's so close down here,
let's go out on the balcony.

Sat: If it's proximity you ab-
hor, little girl, you'd better let well
enough alone.

* * *

Our idea of hard luck: To write
the names of twenty-three Greek,
Russian, and Turkish cities on the
board and to get stuck one-tenth for
misspelling one.

* * *

Josephine: I get so angry with
Bill, he's always airing his views.

Carrie: Remember, dear, to air is
human, to forgive is divine.

* * *

Why ain't you going with Mary
no more?

Well, she wasn't pretty, didn't
have no money, an' she married Joe,
so I just took the advice of my
friends, and quit her.

* * *

So Frank was convicted of having
seven wives, eh? Was the judge
very hard on him?

Hard on him! Why, man, he let
him loose with all seven wives wait-
ing in the corridor for him!





THE FLOW SHEET

In First Aid—

What would you do if a man were to faint, Cooney?

Bring him to, sir.

Then what?

Why, bring him two more, sir.

* * *

Dear Old Lady: My dear, when I was your age, girls were seen and not heard.

Sheba: Well, I guess you got in a lot of dirty work on the quiet.

* * *

"Your honor, I was *not* intoxicated."

"But the officer says you were trying to climb a lamp post."

"I was, your honor. A couple of pink crocodiles had been following me for almost an hour, and I don't mind admitting to you, they were getting on my nerves."

* * *

What were you doing after the accident?

Oh, just scraping up an acquaintance.

* * *

That's the guy I'm laying for, said the hen as the farmer crossed the barn yard.

* * *

"How are you getting along with your trumpet, Dizzy?"

"You know I can't understand it. I blow in the mos' beautiful noises

you ever heard, but the mos' awful blah comes out the other end."

* * *

Katherine: He says he thinks I'm the cutest girl he ever saw. I wonder if I should give him a date.

Margaret: Naw, why not let him keep on thinking it?

* * *

I hate women and I'm glad I hate them because if I didn't hate them I'd like them, and then—Oh, My Gawd!

* * *

Lady to trusty: "Are you sure you have time to show me thru the penitentiary?"

"Ninety-nine years, madam."

* * *

What do you think of Ford as a presidential candidate?

Fine! He has the makings of another Lincoln.

* * *

"What a hot sketch!" exclaimed the artist surveying a drawing of the Sahara.

* * *

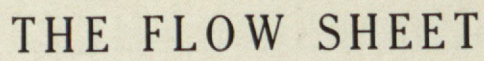
Son at U. of Buffalo wires Dad: "Please send fifty—must subscribe to Bison."

Dad answers: "Here's the fifty. To buy Son what this time?"

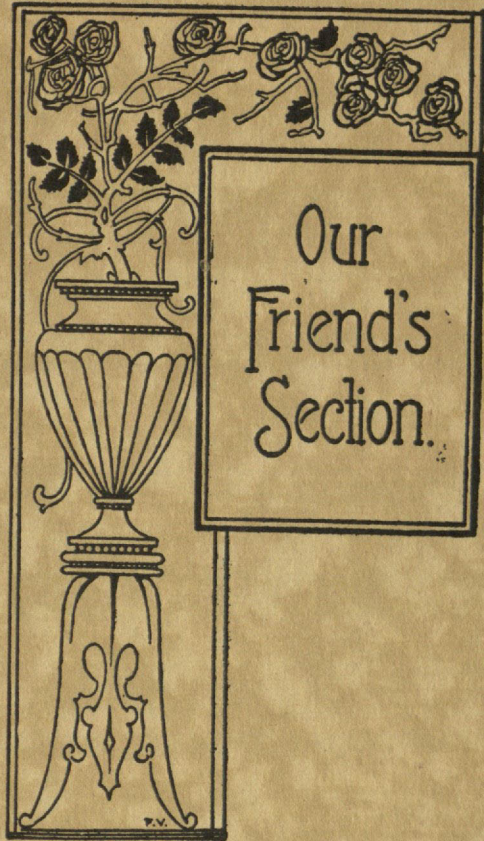
* * *

Absent minded professor who has fallen overboard: "I wonder where Mary has put the Ivory soap."





What's Your Name?





El Paso, Texas

This Book is a Specimen
Of Our Work
BAPTIST PUBLISHING HOUSE
800 Myrtle Avenue
El Paso, Texas

SUCCESS

Work that is intelligently directed is productive of real results. Many a successful man can trace his success to his own good character and his bank's appreciation of same. Starting with a savings account, the various departments of this bank have helped many a man to make his way upward until now his bank is his advisor and his friend. The people of this community will find a welcome here that is directly personal.

AMERICAN TRUST & SAVINGS BANK

El Paso, Texas



DENVER ROCK DRILL MANUFACTURING CO.

301 SAN FRANCISCO ST.

PHONE MAIN 2777

ON YOUR WAY



We congratulate the members of the 1925 graduating class of the College of Mines.

You will soon be on your way to carve—or you may have to dig—a place for yourself in the business world. We want you to carry the thought with you that a good appearance will always help you to declare a dividend on the investment you have made in an education.

We hope that you will always carry pleasant recollections of the Popular Dry Goods Company with you. Any time in the future you think we can serve you, call upon us.

POPULAR DRY GOODS CO.

El Paso, Texas

Corner Mesa Avenue and San Antonio Street

PEAK—HAGEDON



**AMERICAN SMELTING
&
REFINING CO.**

EL PASO SMELTING WORKS

EL PASO, TEXAS



COMPLETE LABORATORY EQUIPMENT

INCLUDING

HEUSSER BALANCES

SAMPSON CRUSHERS

McCOOL PULVERIZERS

ASSAY FURNACES

HEAVY AND C. P. CHEMICALS

FOR

INDUSTRIAL AND METALLURGICAL WORK

ELECTRICAL SUPPLIES - GENERAL SUPPLIES - MACHINERY

FOR

MINE, MILL AND SMELTER

THE MINE & SMELTER SUPPLY COMPANY

Manufacturers and Jobbers

EL PASO

TEXAS

We Are Always For
THE SCHOOL OF MINES

RHEINHEIMER LUMBER COMPANY, INC.

MAIN 498

Entertainment the Year Around

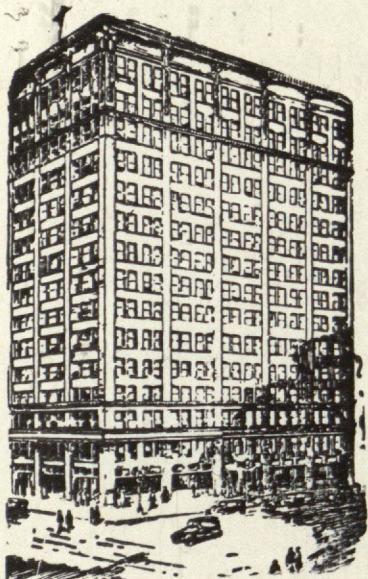
In summer as well as winter the motion picture theatre
is your leading source of entertainment.

The Screen's greatest photoplays.

Comfortable surroundings. Good music.

AT THE

PALACE AND ELLANAY THEATRES



"Fourteen years without
the loss of one dollar to
a customer."

FIRST MORTGAGE CO.

Compliments of the

PASO DEL NORTE HOTEL

PAUL HARVEY, Manager

DAY IN AND DAY OUT

YELLOW CABS
and
GRAY CABS

HAIL THEM ANYWHERE

PHONE MAIN 3500

CITY SERVICE CO.

**GUNNING & CASTEEL
DRUG CO.**

3600 Hueco—Main 5349

907 N. Piedras—Main 1703

3332 Fort Blvd.—East 426

2100 N. Piedras—East 138

**El Paso Sash and
Door Co.**

EL PASO, TEXAS

**Manufacturers
and Jobbers**

COMPLIMENTS OF

SPEARS & MILLER
Ice Manufacturers

PHONE M. 2163

EL PASO, TEXAS

COMPLIMENTS OF
MOMSEN-DUNNEGAN-RYAN CO.
El Paso, Texas

WHOLESALESAERS OF HARDWARE AND MINE SUPPLIES

Compliments of
D. & A. COAL CO.

Compliments of
KELLY & POLLARD
Wholesale Drugs

COMPLIMENTS OF
DE KYLE SMITH
"The Dinnerware House"

China Glass
Housewares

107-109-111 N. Stanton Street

COMPLIMENTS OF
J. M. BOOTH CHEMICAL CO.
DISINFECTANTS AND
JANITORS' SUPPLIES

Electricity has transformed the modern home just as it has revolutionized mining and other great industries. Make it your *personal* servant.

EL PASO ELECTRIC RAILWAY COMPANY

FIRST NATIONAL BANK



EL PASO,
TEXAS



O. A. CRITCHETT

The Custom Assay Office

Phone Main 334

P. O. Box 811

210 San Francisco
El Paso, Texas

UMPIRE AND
CONTROL
WORK
REPRESENTA-
TIVE
FOR ORE
SHIPPERS



GEO. FERGUSON

"THE MASTER CLEANERS AND DYERS OF EL PASO"

WILSON - MILLICAN

"THE BEST CLEANERS"

CLEANING DYEING ALTERATIONS
HATS CLEANED AND BLOCKED

1100 YANDELL BLVD.

PHONE MAIN 4400

.... G A S

The Fuel of Industry

For the Assayer,
Chemist or any one
having work that re-
quires accurate con-
trol and cleanliness.

Gas has no equal

EL PASO GAS CO.

To render a construc-
tive and satisfactory
service of distinctive
quality and value, has
always been the pre-
vailing idea of

The STATE NATIONAL BANK

El Paso, Texas

"Since 1881"

COMPLIMENTS OF FIELD-PARKER CO.

El Paso, Texas

Phoenix, Arizona

Consumers Ice Co.

TEXAS AND DALLAS STS.

EL PASO, TEXAS

"We Keep The Town Cool"

COMPLIMENTS OF
WIGWAM THEATRE

The Home of Tom Mix and Tony

THE WHITE HOUSE

DEPARTMENT
STORE

Say It with Flowers and Prove It with Candy

Potter Floral and Confectionery Co.

Established over 20 years
We Specialize in Cactus Candy
Greenhouse in Val Verde

PHONE MAIN 8100
Martin Bldg., El Paso, Texas

Studebaker

"Smiling Service"

Southwestern Motors, Inc.

601-609 Montana St., El Paso, Texas
Albuquerque, N. M. Las Cruces, N. M.

MATHEW BROTHERS

REAL ESTATE AND RENTALS

WE SPECIALIZE IN FARM LANDS

104 Texas Street Phone Main 464

See Us at Our New Location
115 Texas Street in the Grant Building

June 1st

**SCHUHMAN PHOTO
SHOP**

Phone Main 112

E. E. Schuhmann
F. D. Buckaloo El Paso, Texas

Hanan Shoes

Arrow Shirts

R. C. LIGHTBODY CO., Inc.

EL PASO, TEXAS

"QUALITY SINCE 1881"

Stylplus Clothes Hickey Freeman Clothes

**FRED J. FELDMAN
SPORT SHOP**

COMPLIMENTS OF

HAWKINS DAIRY

"For over 20 years El Paso's Quality Dairy"

Guarantee Standards

\$7.50
Guarantee Shoe Co.

220 N. MESA

Exclusive Agent

EDWIN CLAPP



Cor. Oregon and Texas Sts.

LONGWELL'S GARAGE

Baggage, Storage, Motor Repair Work,

Motor Storage

Day and Night Service

LONGWELL'S GARAGE

Phone Main 1

El Paso, Texas

Serve

BUTLER'S HEATHIZED ICE CREAM

And You Will Please ALL

Everything for the
Engineering Student

from A to Z

NORTON BROS., INC.

We Appreciate Your Trade



Headquarters for
COLLEGE BOYS' CLOTHES

J. E. MORGAN
GENERAL CONTRACTOR
319 Texas Street

JOHNSTON'S PURE FOOD SHOP

The Restaurant of Quality
And Lightning Service
Opposite Ellanay Theatre

IN THE HEART OF EVERYTHING

HOTEL McCOY

Rooms with Shower Baths \$1.50 Single;
\$2.50 Double.

Rooms with Tub Bath \$2.00 and Up.

Absolutely Fire-Proof EL PASO, TEXAS

Trotti Motor Company

DODGE BROTHERS
MOTOR VEHICLES

L. J. Trotti, Pres. El Paso, Texas
Phone Main 274

KNOX HOTEL

A Home away from Home

RATES \$1.50 & \$2.00

214-216 San Francisco St.

CORDELL DRUG CO.

Sheldon Hotel

The REXALL Store

Phone Main 178 We Deliver

**GLARDON'S
THE RADIO STORE**

EVERYTHING ELECTRICAL

407 N. Mesa Main 759

EL PASO'S
LEADING SHOE DEALERS
GIVEN BROS.

3 EL PASO STORES

204 E. San Antonio St. 300 E. Overland St.

215 S. El Paso St.

Olsen-Watts Hardware Co.
The Winchester Store
GENERAL HARDWARE
214 North Stanton St.

SCOTT WHITE & CO.

"Safety First Druggists"

Three Stores

Where "The Miners" take their
"prospects" for the FINEST
Cold Drinks and Light Lunches

CLEAN

ACCESSIBLE

FRIENDLY

Hurd's Confectionery

Mills Building

STORAGE

AUTO REPAIRING

UNITED GARAGE

OPEN DAY AND NIGHT

109 Chihuahua St. Phone M. 1796

CAR WASHING \$1.00 UP

El Paso, Texas

WHITE STAR LUNCH

213 S. El Paso St.

(CAFETERIA)

HOTEL SHELDON

"In the Heart of El Paso"

JOE GOODELL, Pres.

Meet Your Friends at the

MODERN CAFE

MILLS BUILDING

El Paso, Texas

CHINA
CUTLERY
TOYS



GLASSWARE
COOKING
UTENSILS

EL PASO CHINA CO.
108 E. San Antonio St.

Compliments of
ACME LAUNDRY
Phone Main 4200

Family Laundry and Dry Cleaning

We Make Arch Supports for Your Individual
Needs

Special Shoes Made to Order
Cow Boy and Military Boots

SHOE REPAIRING DONE RIGHT

Chas. Rokahr Boot & Shoe Co.

316 N. Mesa Ave.

Phone Main 4152

HOMES

FARMS



211 N. Oregon
Street

Sheldon Hotel
Building

Rentals and Insurance

TROST & TROST
Architects, Engineers

El Paso

Phoenix

Albuquerque

Compliments of
DOSS & DOSS
STUDIO



Established 1879

Incorporated 1888

Pomeroy's El Paso Transfer Co.

U. S. BONDED CARRIER

General Transfer Work

Heavy Hauling and Storage

300-310 S. Oregon

Phone M. 2444

J. B. GRIFFING, Mgr.

P. E. JOHNSON AND COMPANY

Hay, Grain and Fuel

P. E. Johnson, Mgr.

TELEPHONE MAIN 291 - 292

1809-31 Magoffin Ave.

El Paso, Texas

Eat at

BOLTON'S CAFE

414 E. SAN ANTONIO ST.

EL PASO, TEXAS

FORREST E. BAKER

CIVIL ENGINEER

El Paso, Texas

THE H. LESINSKY CO.

Wholesale Grocers

Jobbers of Dry Goods

Compliments of
CORONA



EL PASO BITHULITIC COMPANY

General Paving Contractors

"Sincerity"
Clothing

Nettleton Shoes
W. L. Douglas Shoes



Menswear Exclusively

El Paso, Texas

Compliments of
LANDER LUMBER
COMPANY

A Man's Choice
A GRUEN WATCH

W. T. HIXSON CO.

Did It Come From Hixson's

Desert Gold Dairy Products are
Produced in the Southwest's
Largest and Most Modern
Dairy Plant

RIO GRANDE VALLEY DAIRY
ASSOCIATION

300 Block S. Virginia

Phone M. 917

INGERSOLL-RAND CO.

OF TEXAS

El Paso, Texas

Mexico City

MANUFACTURERS OF

COMPRESSED AIR MACHINERY FOR

EVERY PURPOSE

CONCRETE FOR PERMANENCE

EL TORO BRAND

**QUALITY AND SERVICE
UNRIVALLED**

**SOUTHWESTERN PORTLAND
CEMENT COMPANY**

**613-619 TWO REPUBLICS BUILDING
EL PASO, TEXAS**

PROFESSIONAL CARDS

Moderate Prices

Snappy Service

UNION CAFE

120 San Francisco Street

A. P. COLES & BROS.

Real Estate, Loans and Rents

204 N. Oregon St.

El Paso, Texas

DR. W. E. VANDEVERE

EYE, EAR, NOSE AND THROAT

218 Mills Bldg.

PAUL GALLAGHER, M. D.

605 Mills Bldg.

ISAACKS & LATNER

LAWYERS

521 1st National Bank Bldg.

D. COLE

MINING AND METALLURGY

1209 Mills Bldg.

ROBERT McCART, Jr.

CONSULTING MINING ENGINEER

222 Mills Bldg.

El Paso, Texas

Schuster & Schuster, M. D.'s

EYE AND EAR, NOSE, THROAT

401 1st National Bank Bldg.

BROWN W. RANDELL, M. D.

EYE, EAR, NOSE AND THROAT

516 Mills Bldg.

DR. R. N. RASMUS

DENTISTRY AND X-RAYS

213 Mills Bldg.

FRANK GROCH, E. M.

GROCH CENTRIFUGAL FLOTATION CO.

509 Mills Bldg.

STEWART BROTHERS

DENTISTS

Phone Main 1320

203-210 Caples Bldg.

Dr. John A. Hardy, M. D.

214 Roberts-Banner Bldg.

VERNON L. SULLIVAN

CONSULTING ENGINEER

807 Mills Building

J. G. MURPHY

WORTHINGTON, INC.

510 Mills Building

Phone Main 3646

TOM B. JOHNSON

STOCKBROKER

Sheldon Hotel Building

RECKHART'S ASSAY OFFICE

307 San Francisco St.

PHONE MAIN 70

MAN'S SHOPPE

EL PASO'S \$25 SUIT HOUSE

104 E San Antonio St.

She (emphatically): "We've been waiting a good many minutes for that mother of mine!"

He (aggravated): "Hours, I should say."

She: "Ours? Oh George, this is so sudden."

The cave-dweller used to take his trusty club, go out and knock a woman cold and TAKE her for a mate. Now the woman fixes herself up to knock the man cold.

Proff to tardy stude: "What are you late for?"

Stude (sleepily): "Er—class, I suppose."

Handsome Salesman: "Couldn't I interest you in an automobile?"

Pretty Girl: "Perhaps you could. Come around in one some evening."